

HEAVY INDUSTRIAL LAND FOR SALE

0 US HWY 74 W, LUMBERTON, NC 28360

±58.47 AC

DISCOUNT
WHOLESALERS

LUMBER RIVER

95

ALT
74

95

SOUTHEASTERN
AGRICULTURAL
CENTER

ALT
74

74

74

SCOTT HADLEY
Vice President, Principal
919.906.0524
shadley@lee-associates.com

LEE & ASSOCIATES
COMMERCIAL REAL ESTATE SERVICES
RALEIGH • DURHAM • WILMINGTON

PROPERTY SUMMARY

PROPERTY DESCRIPTION

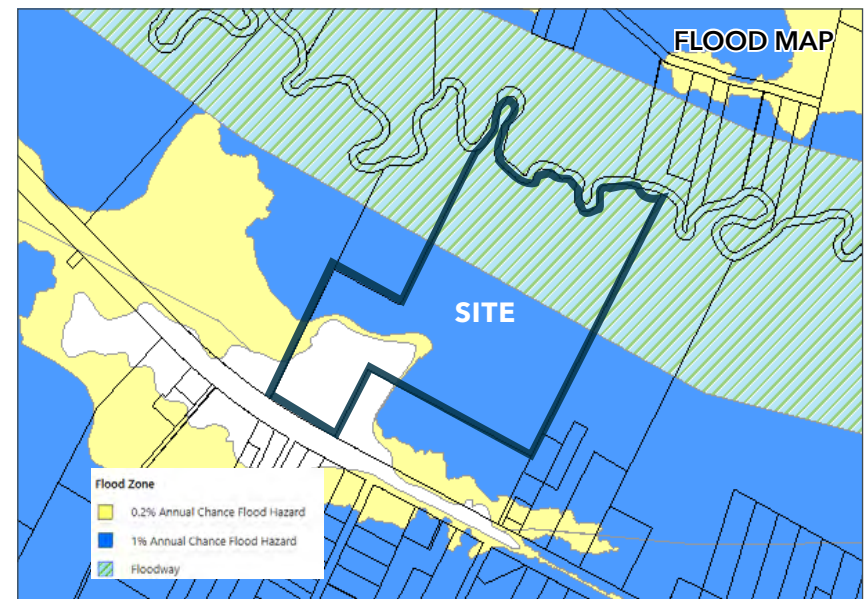
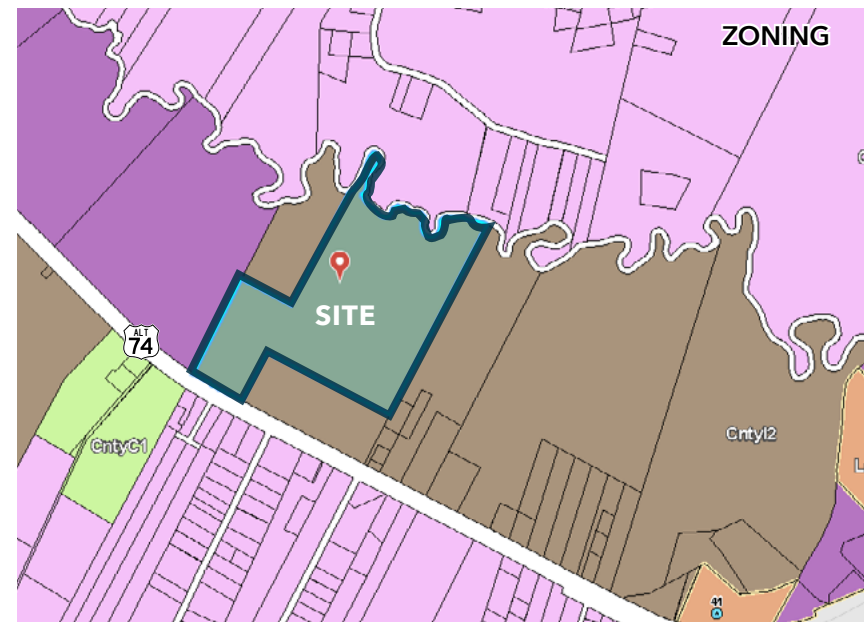
The property consists of ±58.47 acres of heavy industrial-zoned land with direct access to Highway 74. Located less than one mile from I-95, the site offers convenient north-south access via I-95 and east-west connectivity along Highway 74. The property includes wetlands, with the usable dry land positioned along the highway frontage. Suitable for a wide range of industrial uses.

PROPERTY HIGHLIGHTS

- » ±58.47 Acres
- » PIN#: 936143835500
- » Zoned H-I ([Heavy Industrial](#))
- » Tremendous access to Hwy 74 and I-95
- » Water on Hwy 74

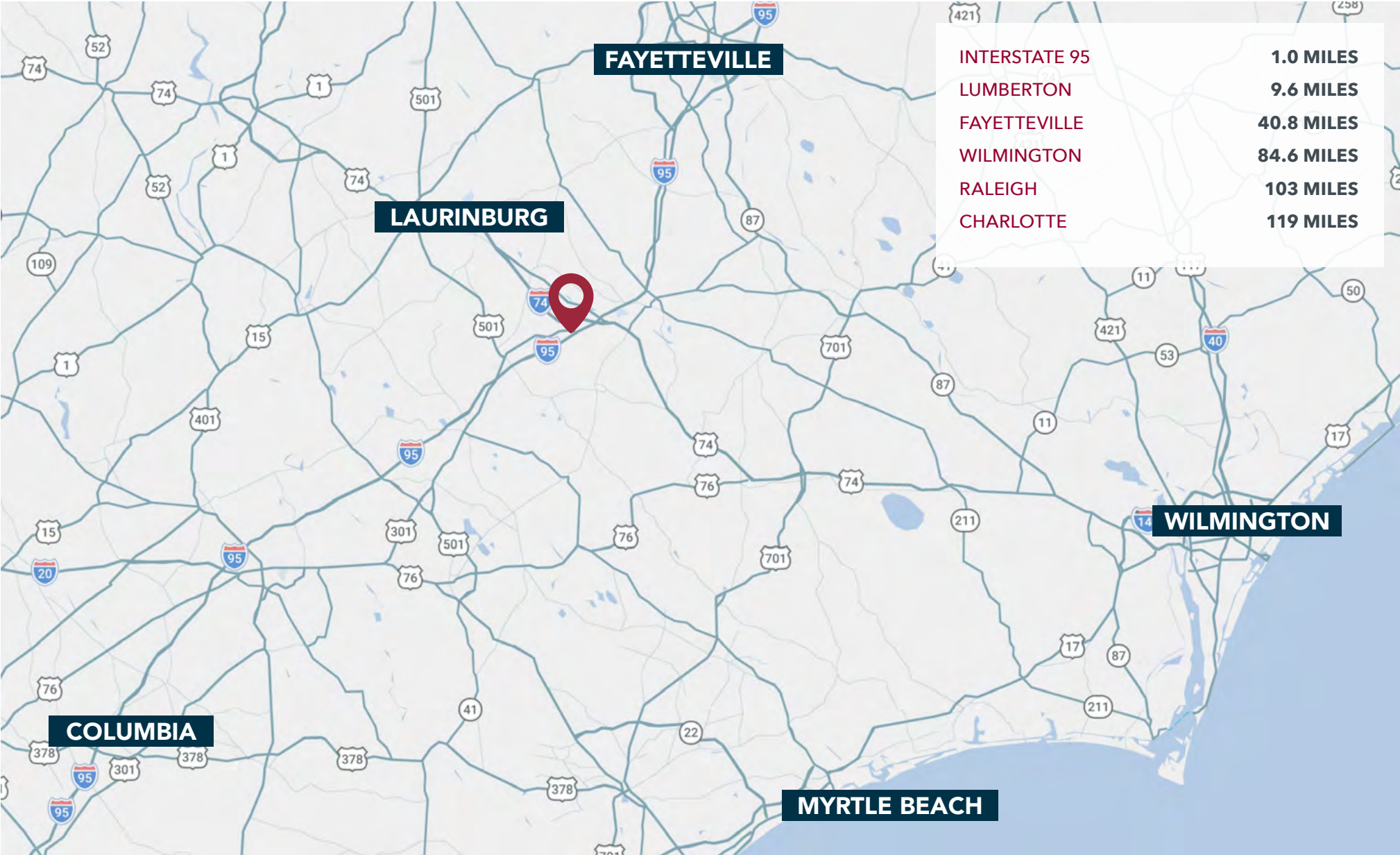
SALE PRICE

- » \$17,000/acre



LAND FOR SALE • 0 US 74 WHY W • LUMBERTON, NC

REGIONAL OVERVIEW



DEMOGRAPHICS

	1 MILE	3 MILES	5 MILES
Population (2025)	663	2,163	10,886
Daytime Population	491	2,084	12,373
Total Businesses	13	66	376
Total Employees	108	766	6,307
Average Household Income	\$57,971	\$59,225	\$62,155

ABOUT ROBESON COUNTY, NC

- » Located in Robeson County, Lumberton serves as a key regional hub in southeastern NC with access to major transportation corridors and a strong industrial presence.
- » Lumberton is strategically positioned at the intersection of I-95 and Highway 74, providing efficient north-south access along the East Coast and east-west connectivity across the state.
- » Ongoing infrastructure investments along the I-95 and Hwy 74 corridors continue to enhance regional mobility and support industrial and logistics growth.
- » Lumberton offers convenient access to major markets, located approximately 30 miles south of Fayetteville and within driving distance of Wilmington, Raleigh, and Charlotte.
- » The area supports a diverse base of industrial, distribution, and manufacturing users, making it well suited for a range of commercial and industrial development opportunities.



LAND FOR SALE • 0 US 74 WHY W • LUMBERTON, NC