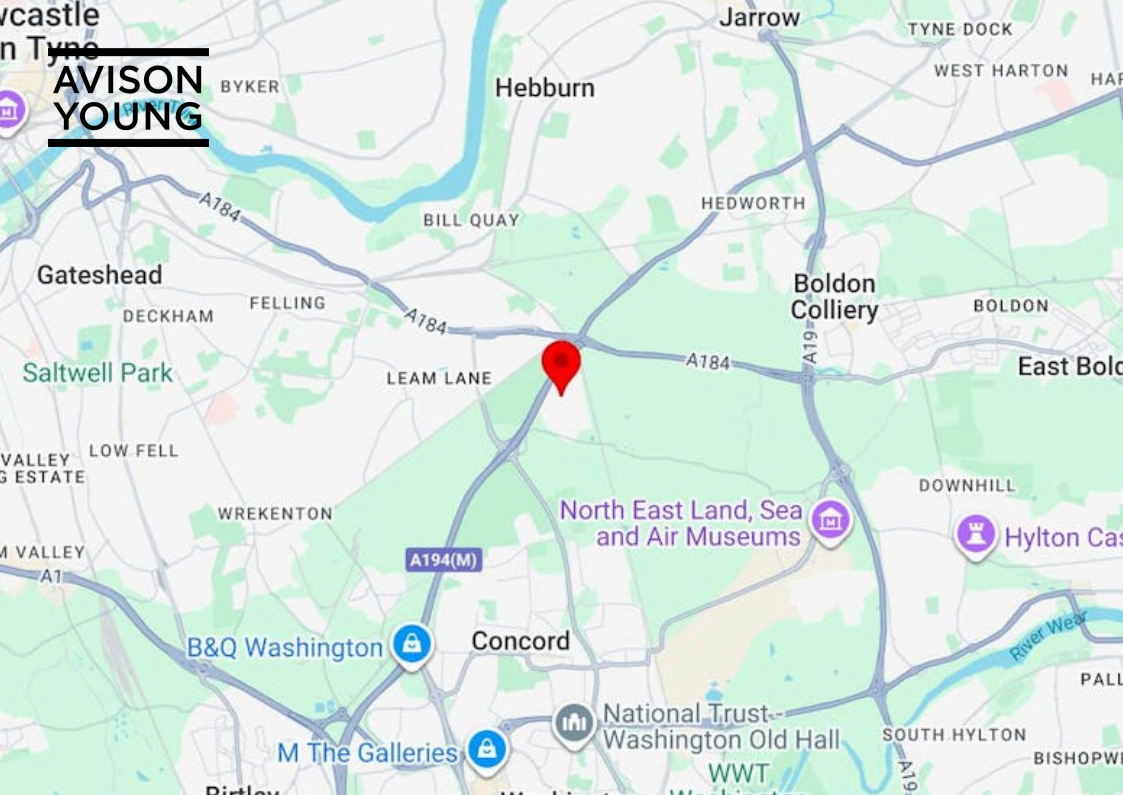




**AVISON  
YOUNG**

**Unit 13 Follingsby Park, Gateshead, NE10 8YG**  
Office, Serviced Office To Let | Rent on application | 100 to 27,000 sq ft  
Offices available in established business location - from one desk to 27,000 sq ft



### Key Points

- Offices on Ground, 1st, and 2nd floor
- Car parking
- Carpeted throughout
- Kitchen facilities / canteen
- Air conditioning
- Lift access
- WC's and locker facilities

### Description

The property comprises good quality offices on a wider site. Requirements from one desk to 27,000 sq ft can be accommodated.

### Location

Follingsby Park is one of the north east regions premier industrial estates. Located adjacent to the A194, it has excellent access to both the A1(M) and A19 giving the estate excellent connectivity to the rest of the region. The estate houses 49 industrial units ranging in size from 5,000 sq ft to 130,000 sq ft with a total floorspace of circa 1.1 million sq ft. The estate is an attractive environment for occupiers, is well landscaped and benefits from 24hr security.

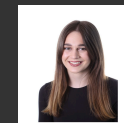
### Summary

- Rent: Rent on application
- EPC: C (64)
- Lease: New Lease

### Contact & Viewings



Adam Lawson  
0191 269 0064 | 07825 113 277  
adam.lawson@avisonyoung.com



Megan Cooper  
0191 269 0066 | 07823 552 237  
megan.cooper@avisonyoung.com

### Further information

- [View details on our website](#)
- [View Microsite](#)





