

1575 EAST JACKSON STREET

PHOENIX, ARIZONA 85034



citywide
COMMERCIAL REAL ESTATE

THE ROW ON JACKSON
15TH STREET & JACKSON STREET

Chad Nepl

Senior Vice President
602.695.4909
cnepl@citywidecre.com

Vince Utucu

Sales & Leasing
773.807.6674
vince@citywidecre.com

1645 East Missouri Avenue, Suite 330
Phoenix, Arizona 85016
602.313.1000 • citywidecre.com

FOR LEASE

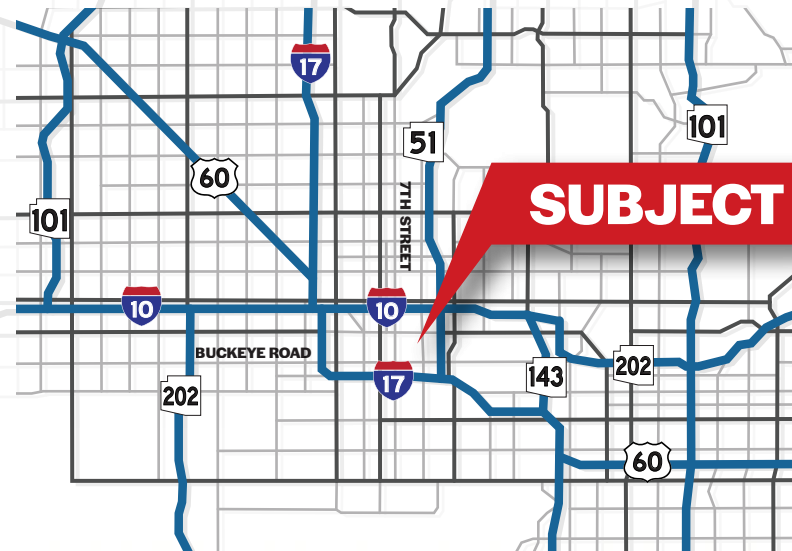
8,028 SQUARE FEET

\$1.15 MODIFIED GROSS

All information furnished is from sources deemed reliable. No representation is made as to the accuracy thereof and it is submitted subject to errors, omissions, changes, or withdrawal without notice and to any special listings conditions, including the rate and manner of payment of commissions for particular offerings imposed by principals or agreed to by the company, the terms of which are available to interested principals or brokers. All dimensions are approximate. Owner and/or Broker make no representations expressed or implied as to the accuracy of floor plan/site plan dimensions.

PROPERTY SUMMARY

- 8,028 Square Feet
- \$1.15 PSF, Modified Gross
- Secured Yard
- Three (3) Grade Level Doors
- 18' Clear Height
- Fire Sprinklered
- I-2 Zoning



FOR MORE INFORMATION

Chad Neppi

Senior Vice President
602.695.4909
cneppi@citywidecre.com

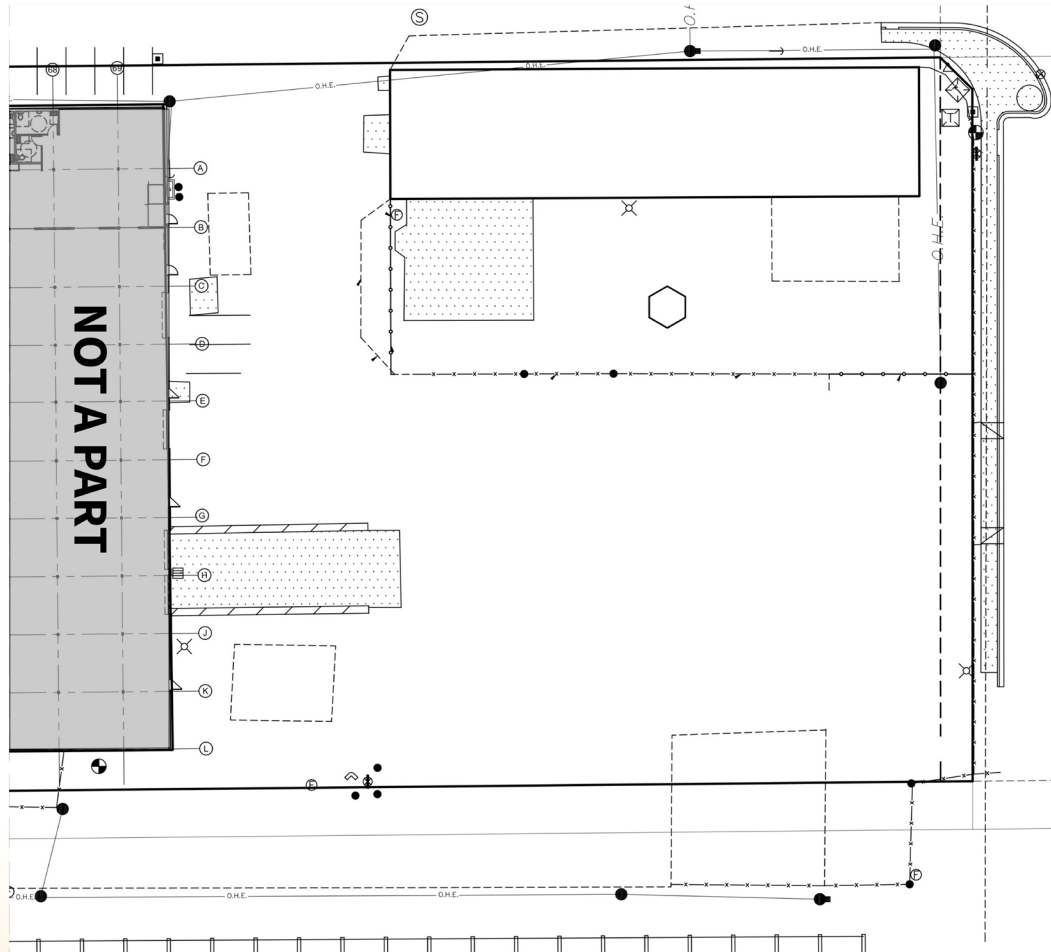
Vince Utucu

Sales & Leasing
773.807.6674
vince@citywidecre.com

1645 East Missouri Avenue, Suite 330
Phoenix, Arizona 85016
602.313.1000 • citywidecre.com



SITE PLAN



Chad Nepl

Senior Vice President
602.695.4909
cnepl@citywidecre.com

Vince Utucu

Sales & Leasing
773.807.6674
vince@citywidecre.com

1645 East Missouri Avenue, Suite 330
Phoenix, Arizona 85016
602.313.1000 • citywidecre.com