

## EXCLUSIVE LISTING!

1.91 +/- Total Acres in Kyle Canyon! Listed \$313,000

Kyle Canyon Las Vegas, NV 89166



- 1.91 +/- Acres in Kyle Canyon
- APN: 126-09-602-003
- Zoning-RS80- Single Family (Min. Lot size 80,000 SF)
- Planned Land Use- ON-Outlying Neighborhood
- Unincorporated Clark County- Lower Kyle Canyon district
- Parcel has a wash
- Located in the Spring Mountain Range and Recreation Area, Mount Charleston, at 11,916 feet, is the highest mountain in the range and Clark County.
- The town of Mount Charleston has an annual population of 357.
- Mt Charleston contains several campgrounds and picnic areas. The numerous hiking paths range from easy to advanced. Enjoy cooler temperatures and breathtaking scenery.
- Nearby Lee Canyon is a popular spot for skiers and snowboarders.



**Mark Anthony Rua**  
**Brokers**

S.026655

Office: 702-992-7534  
Cell: 702-595-6244

2855 St Rose Parkway, Suite 100, Henderson, NV 89052  
[markanthonyrua@gmail.com](mailto:markanthonyrua@gmail.com) [www.mrlandlasvegas.com](http://www.mrlandlasvegas.com)



# 1.91 +/- Acres Frontage Lot Across from Elvis Alive Dr



Mark Anthony Rua  
Brokers

2855 St Rose Parkway, Suite 100, Henderson, NV 89052  
[markanthonyrue@gmail.com](mailto:markanthonyrue@gmail.com) [www.mrlandlasvegas.com](http://www.mrlandlasvegas.com)

Office: 702-992-7534  
Cell: 702-595-6244



# Kyle Canyon Las Vegas, NV 89166



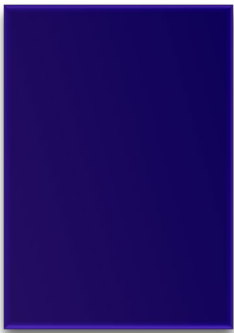
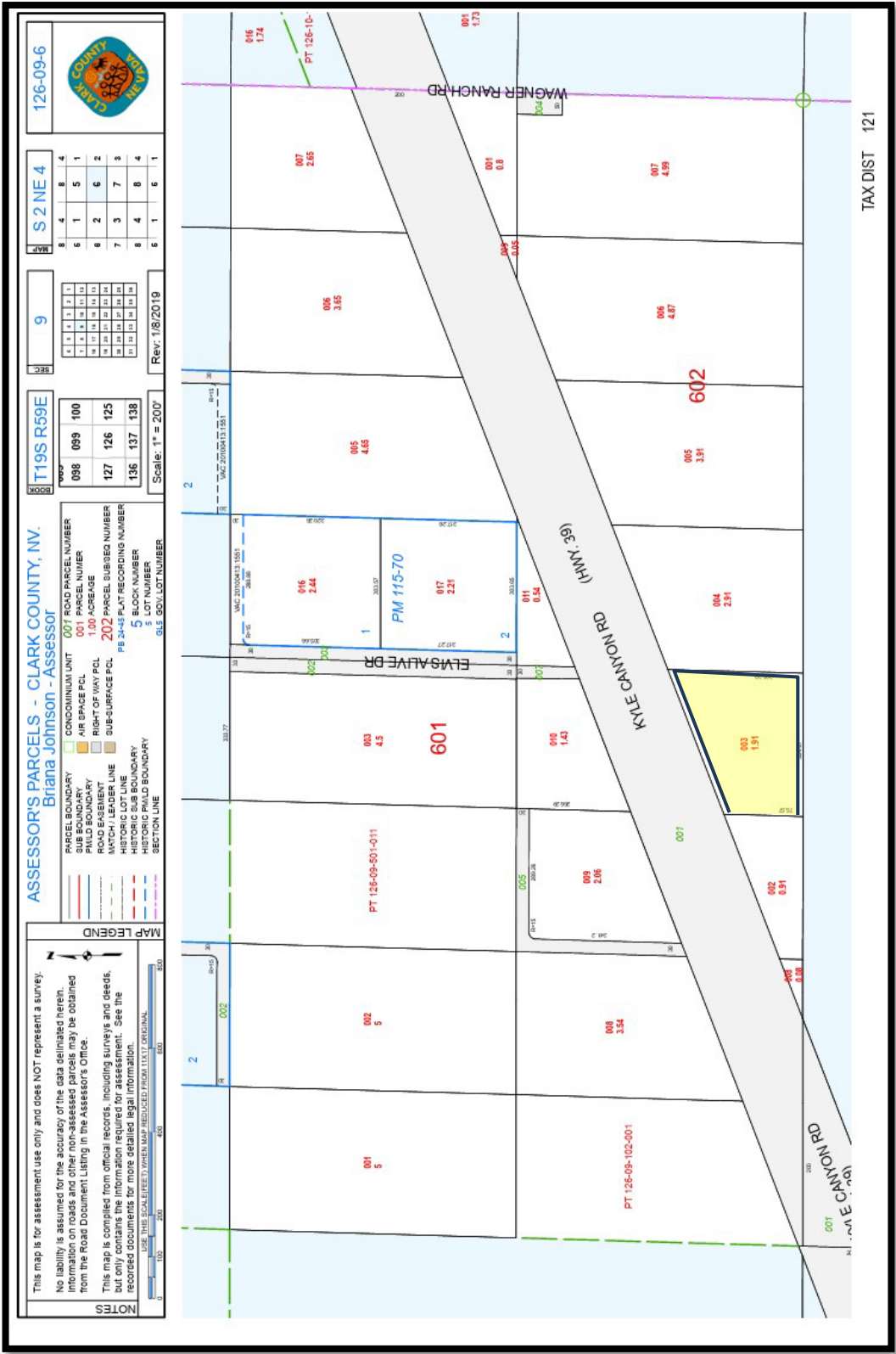
**Mark Anthony Rua**  
**Brokers**

2855 St Rose Parkway, Suite 100, Henderson, NV 89052  
[markanthonyrua@gmail.com](mailto:markanthonyrua@gmail.com) [www.mrlandlasvegas.com](http://www.mrlandlasvegas.com)

Office: 702-992-7534  
Cell: 702-595-6244



The information contained herein is subject to verification and no liability for errors or omissions is assumed. The price, data, and other information are subject to change or the listing may be withdrawn without notice.



Parcel Map



**Mark Anthony Rua**  
**Brokers**

2855 St Rose Parkway, Suite 100, Henderson, NV 89052  
[markanthonyrua@gmail.com](mailto:markanthonyrua@gmail.com) [www.mrlandlasvegas.com](http://www.mrlandlasvegas.com)

Office: 702-992-7534  
 Cell: 702-595-6244



The information contained herein is subject to verification and no liability for errors or omissions is assumed. The price, data, and other information are subject to change or the listing may be withdrawn without notice.