

# 8016 W. 4th Ave, Kennewick



## Property Description

+/- 1,400 sf of available space, located off of 4th avenue in the Hanse Park area. Full service lease, negotiable term. Due to zoning, use will need to be approved by the City.

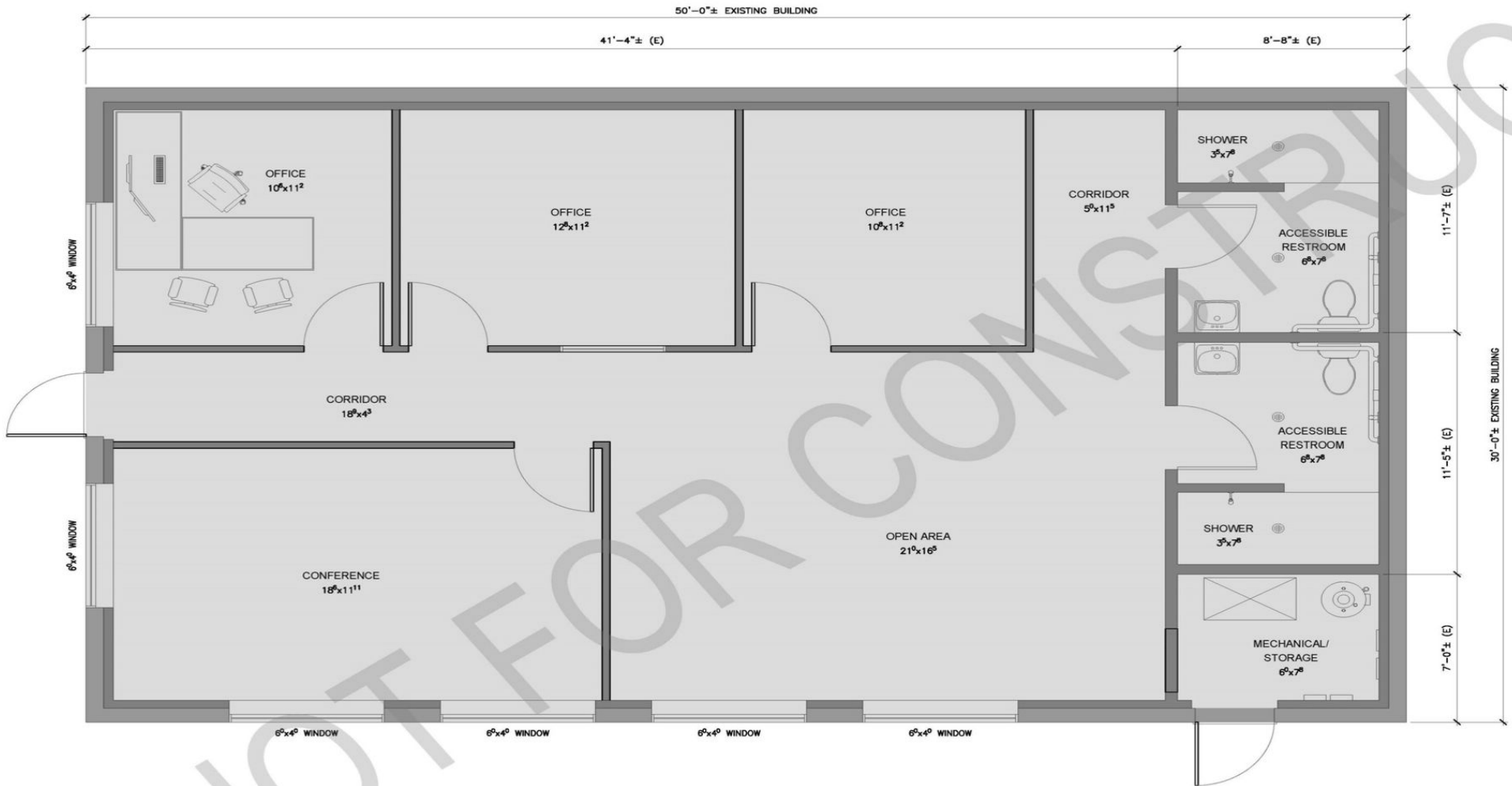
## Offering Summary

Lease Rate:	\$25.00 per SF
Number of Units:	1
Available SF:	1,500 SF
Lot Size:	5.27 Acres
Building Size:	1,410 SF
Zoning	RH

# Additional Photos



# Proposed Floor Plans



# Location Map



Google



Derrick Stricker CCIM SIOR  
509.430.8533  
Derrick@StrickerCRE.com

Jazmine Murillo  
509.792.0428  
jazmine@strickercre.com

[strickerCRE.com](http://strickerCRE.com)