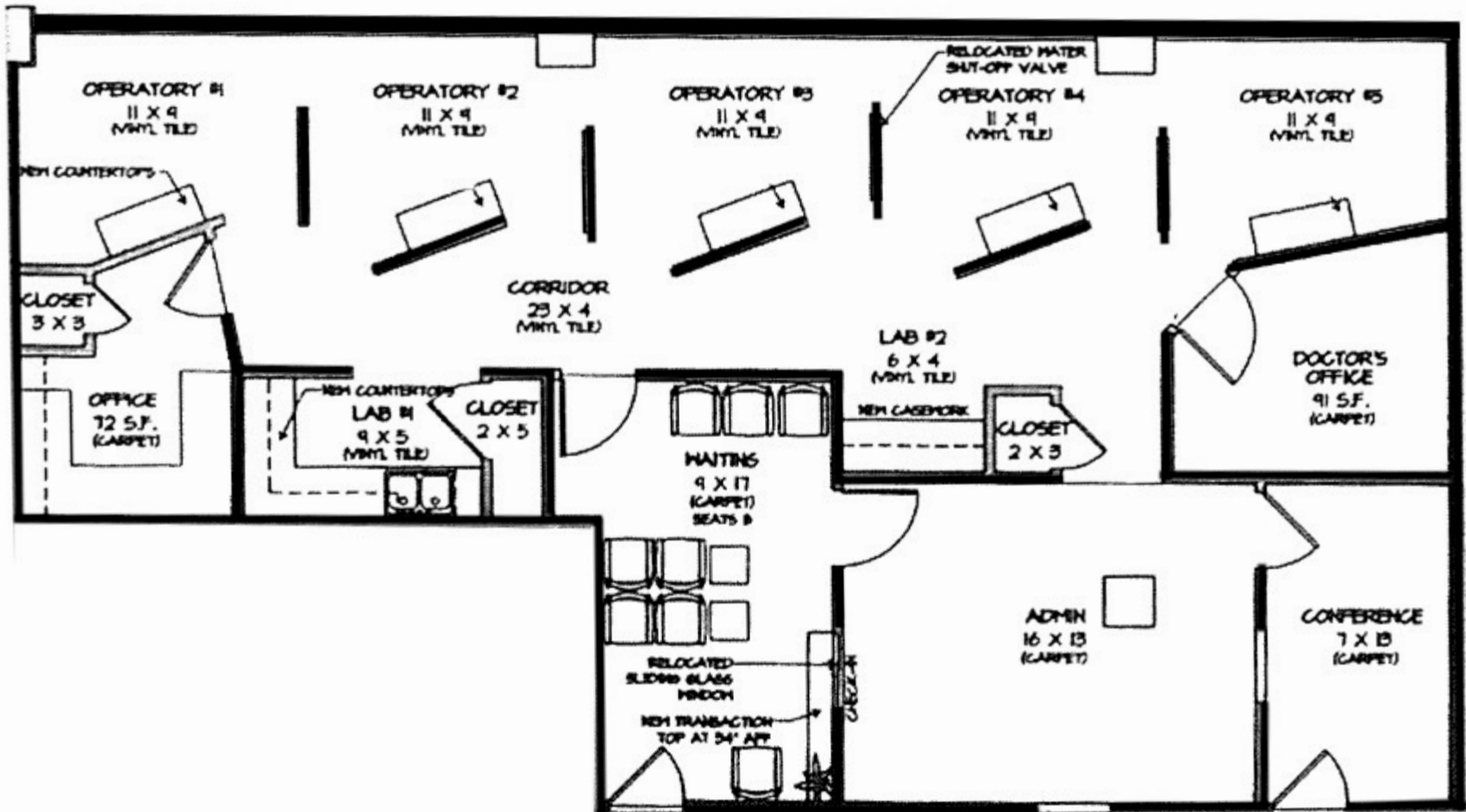


12255 De Paul Drive  
Bridgeton, MO 63044

# Suite 885 - 1,478 USF



**FOR ADDITIONAL INFO, CONTACT:**

**Joseph Lampe, Director - Healthcare**  
314-728-6007 / [jlampe@ccr-stl.com](mailto:jlampe@ccr-stl.com)

**Jared Stone, Associate**  
314-604-8466 / [jstone@ccr-stl.com](mailto:jstone@ccr-stl.com)

**Leased By:**



8000 Maryland Avenue, Suite 1120  
St. Louis, MO 63105  
[www.ccr-stl.com](http://www.ccr-stl.com)

**Owned and Managed by:**



The information contained herein has been obtained from the owner of the property or from other sources. The brokers do not guarantee the accuracy of the information. Sellers and brokers make no representation as to the environmental or other condition of the property and recommend that purchaser/tenant investigate fully.