



# ENTERPRISE DISTRIBUTION CENTER | FOR LEASE

1101 ENTERPRISE AVE., SUITE 20A, OKLAHOMA CITY, OK

**KARLEY HARPER, CCIM**  
kharper@newmarkrp.com  
C: 405.371.3498

**KRIS DAVIS, SIOR**  
kgdavis@newmarkrp.com  
C: 405.202.9525

**BRETT PRICE, CCIM, SIOR**  
bprice@newmarkrp.com  
C: 405.613.8380

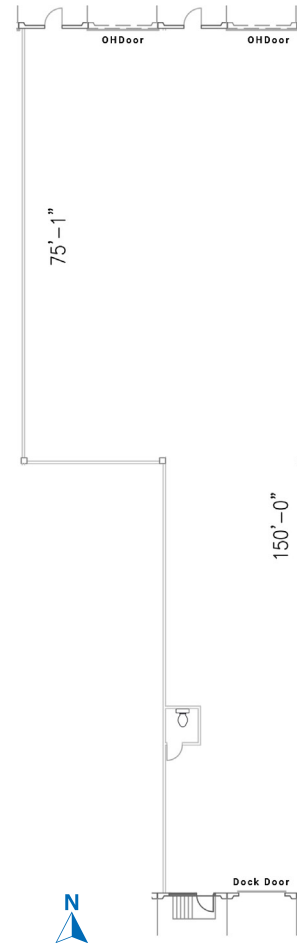
**NEWMARK**  
ROBINSON PARK

# 1101 ENTERPRISE AVE., SUITE 20A / FOR LEASE



## PROPERTY OVERVIEW

Enterprise Distribution Center is located directly south of I-40 and less than 2 miles west of I-44 which allows for convenient and quick access to Oklahoma's interstate system. The property is located in a densely populated commercial area with a multitude of restaurants and national retailers within a 3 mile radius. Will Rogers International Airport is approximately three miles to the south.



## DETAILS

Available SF	5,472 SF
Lease Rate	Contact Broker
Building Size	63,840 SF
Zoning	I-2
Cross Streets	S Meridian & Enterprise Way

## HIGHLIGHTS

- Climate controlled warehouse
- 1 dock high door
- 2 grade level doors
- 24' column spacing
- 18' clear height
- Can be combined with neighboring suite for a total of 10,944 SF