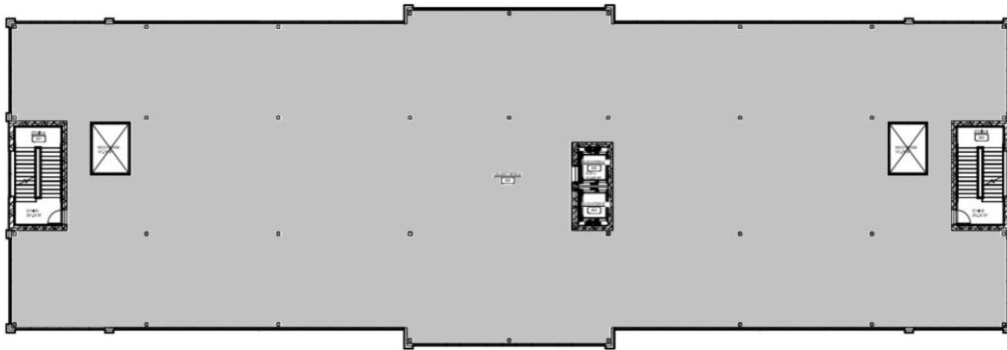


# SUITE 300 — THIRD FLOOR

2255 Corporate Center | 2255 Rustad Lane E,  
West Fargo, ND



## BUILDING HIGHLIGHTS

|                   |                                  |
|-------------------|----------------------------------|
| <b>64,625 SF</b>  | Class A, 5-Story Office Building |
| <b>15,095 RSF</b> | Total Available — Full 3rd Floor |
| <b>Available</b>  | Starting in 2027                 |
| <b>Parking</b>    | Ample Surface Nearby             |

## AMENITIES & LOCATION

- Located on I-94 and just off Veterans Boulevard
- Premier 1<sup>st</sup> Floor Lobby Location
- Shared clubhouse & conference center on 5th floor  
37+ restaurants, 28+ retailer's steps away
- On-site management & security
- Multi-carrier fiber connectivity
- 12 min to Hector International Airport
- Top Quality Construction with Class A Finishes
- Building Proximity Card Access System
- Abundant retail & restaurant options within walking and short drive distance

Year Built-2026

Call for Rates & Availability

SUITE 300

**15,095 RSF**