

# 456

montgomery

**\$4.56 PSF  
COMMISSIONS  
AT  
456 MONTGOMERY!**  
*FOR THE FIRST TWO YEARS  
FOR ANY DEAL COMMENCING  
THROUGH 06/30/26*

COME SEE OUR NEW  
TENANT LOUNGE WITH

- PRIVATE CONFERENCE ROOM
- ESPRESSO BAR
- 100" TV

An unbeatable location and superior flexibility define the offices at 456 Montgomery Plaza. Located in San Francisco's Financial District, the building offers the open, light-filled spaces that modern tenants are looking for, coupled with easy access via multiple modes of transportation.

### 178,014 SF side core design

efficient and open floor plans

### 26-stories of column free floor plates

offer maximum flexibility

### Retail Services

Haircuts By Leo

San Francisco Golf Performance Center

Ross Lai DDS

Additional New Retail Coming Soon

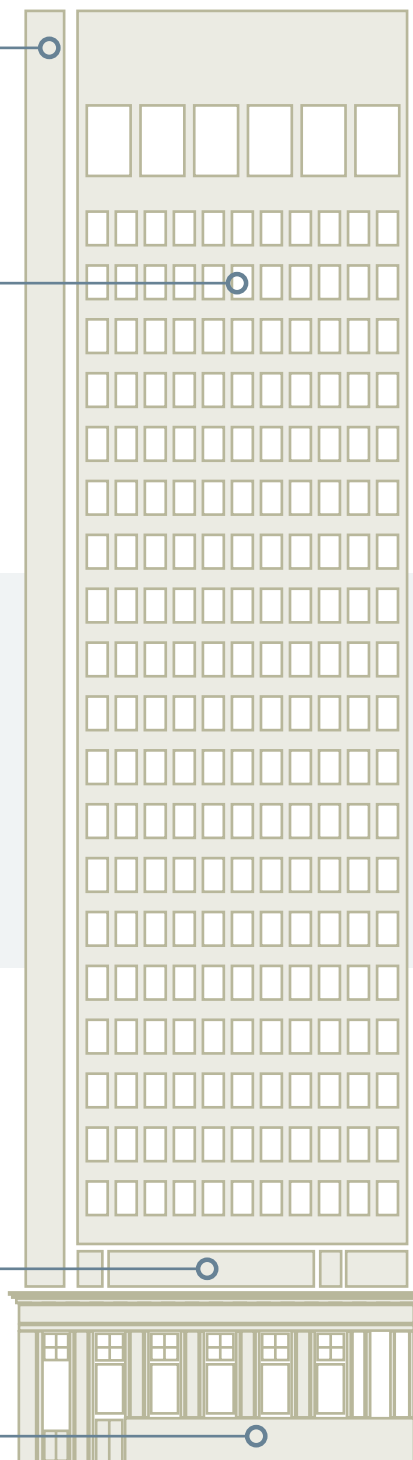
Excellent view corridors and setbacks from historic low-rise neighborhoods

### Modernist design

on top of a classic facade at street level

### Elegant lobby

with 24/7 security, new elevator cabs, state-of-the-art elevator security system, and new state-of-the-art escalators



# BUILDING FEATURES

456  
MONTGOMERY



REACH BEYOND

**Suite 200** 7,606 RSF  
Available Now

**Suite 400** 4,058 RSF  
Available Now

**Suite 488** 2,380 RSF  
Available Now

**Suite 600** 7,783 RSF  
Available Now

**Suite 700** 3,951 RSF  
Available Now

**Suite 750** 3,627 RSF  
New Tenant Lounge

**Suite 800** 7,783 RSF  
Available Now

**Suite 900** 4,887 RSF  
Available Now

**Suite 950** 2,692 RSF  
Available Now

**Suite 1200** 4,930 RSF  
Available Now

**Suite 1410** 3,039 RSF  
Available Now

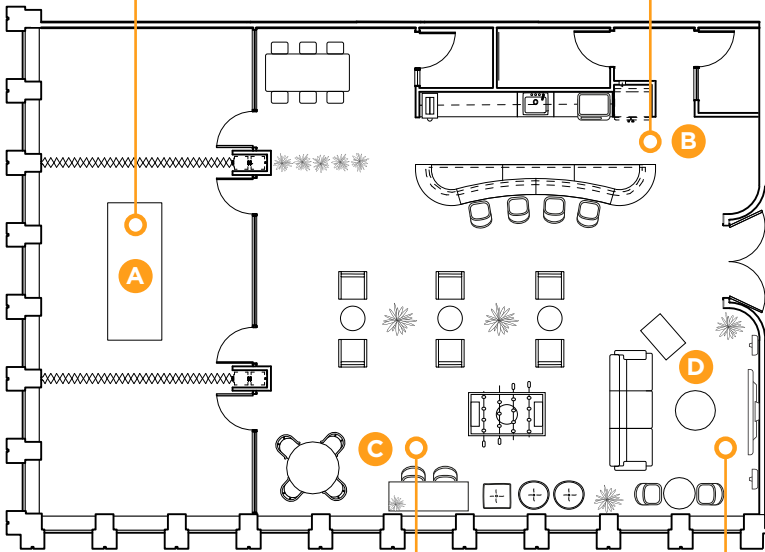
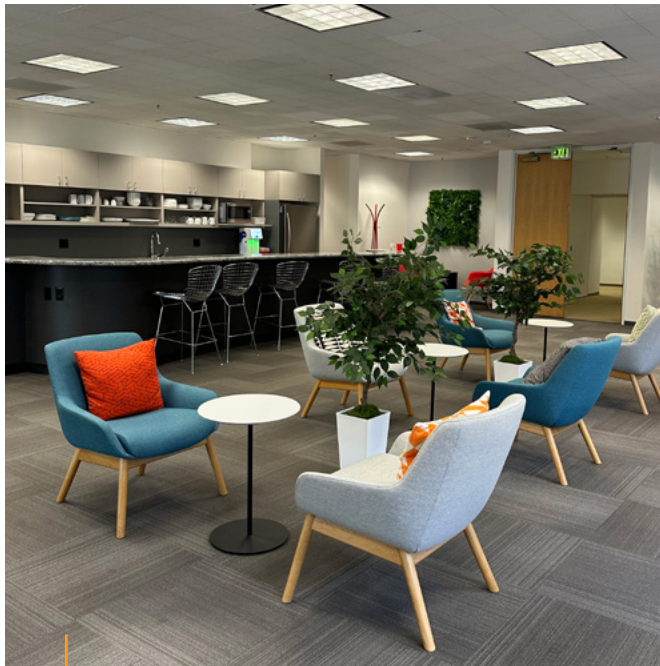
**Suite 1800** 7,905 RSF  
Available Now

**Suite 1900** 7,905 RSF  
Available Now

**Suite 2000** 7,905 RSF  
Available Now

AVAILABLE SPACE

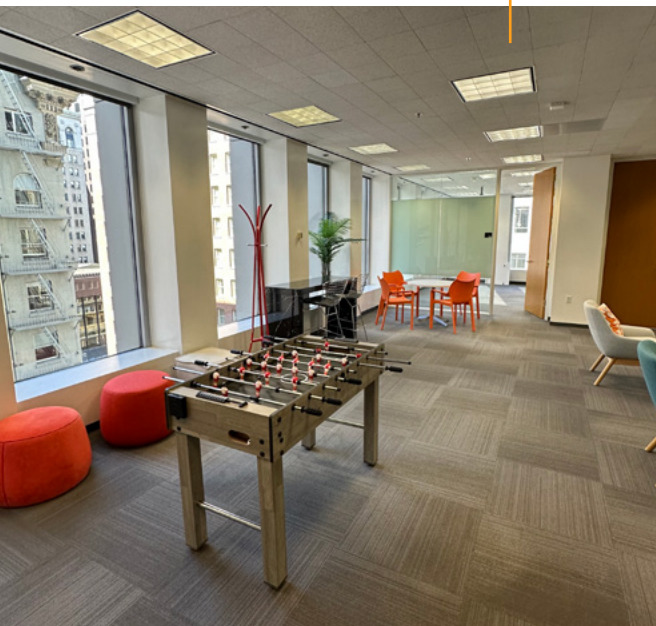
456  
MONTGOMERY



## NEW TENANT LOUNGE!

SUITE 750 | 3,627 RSF

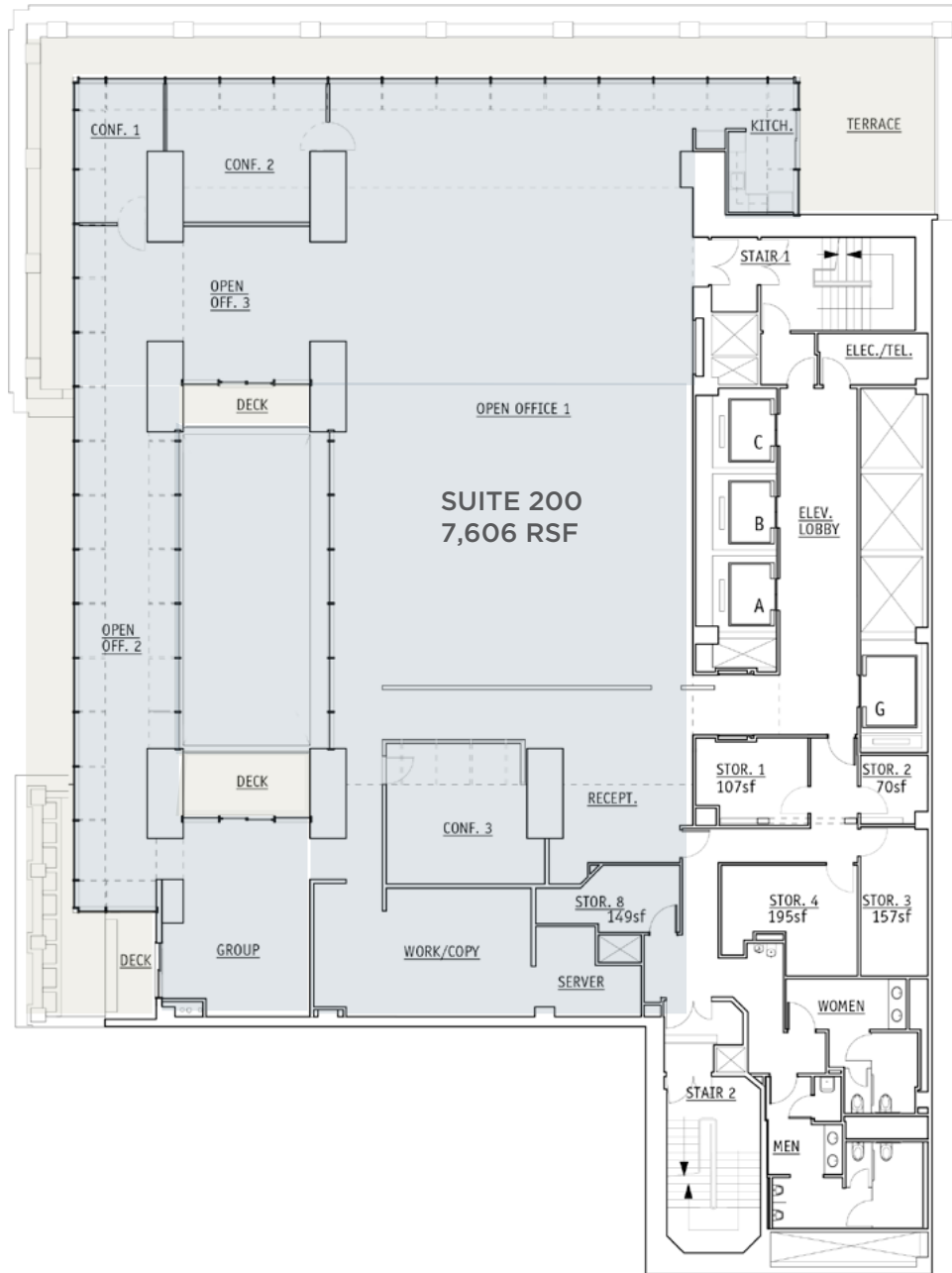
- A** Large conference room with full-scale AV system
- B** Espresso Bar
- C** Collaboration / Entertainment Space
- C** Rentable space for corporate company events
- D** 100" TV





**Available Now**  
Full floor elevator identity

- Exceptionally high ceilings
- Private outdoor terraces
- Unique identity space
- 2 conference rooms
- Extensive window-line
- Kitchen and open space



SUITE 200 | 7,606 RSF

## Available Now Partial floor

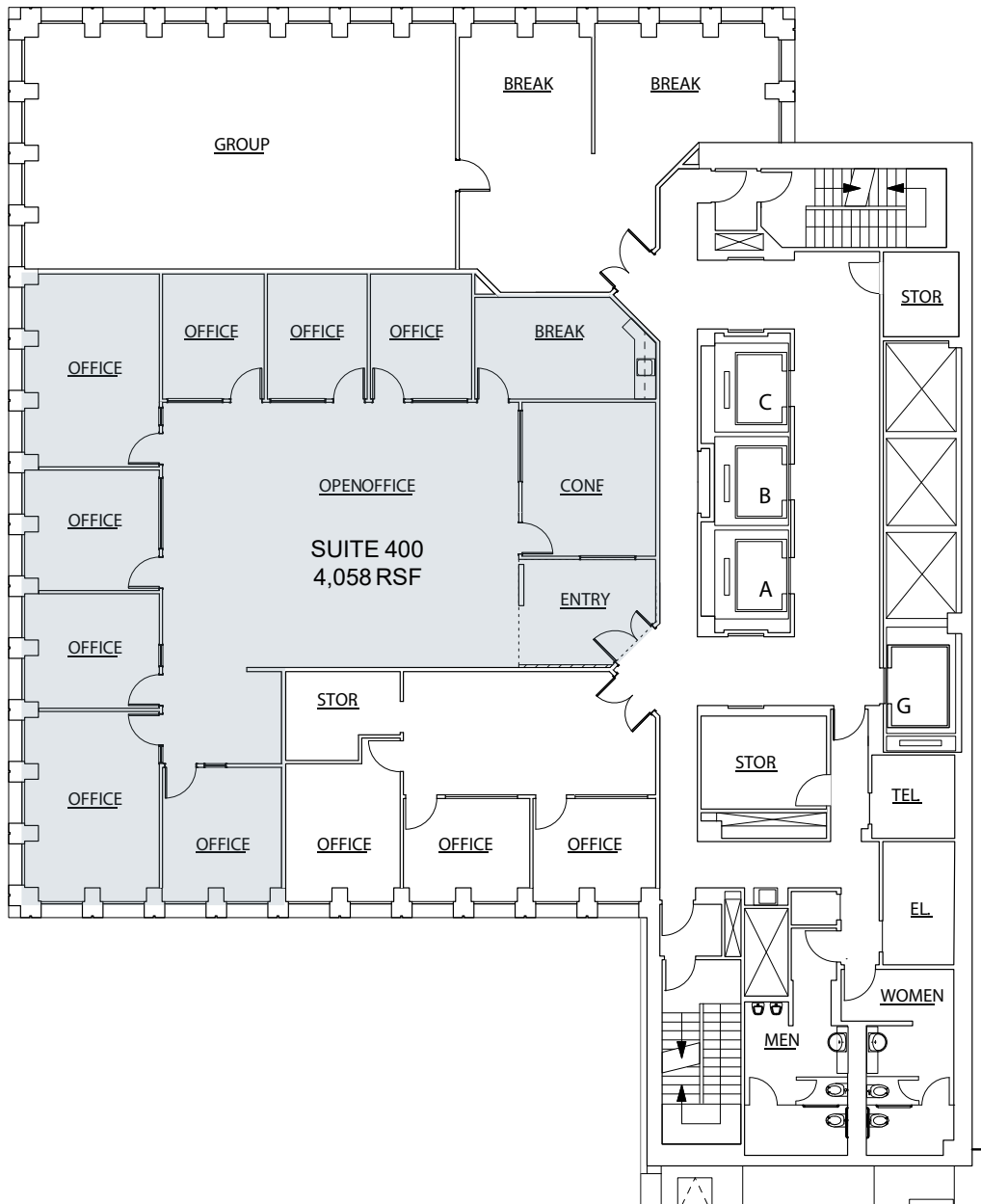
8 private offices

1 conference room

Break room

Reception

Central open area

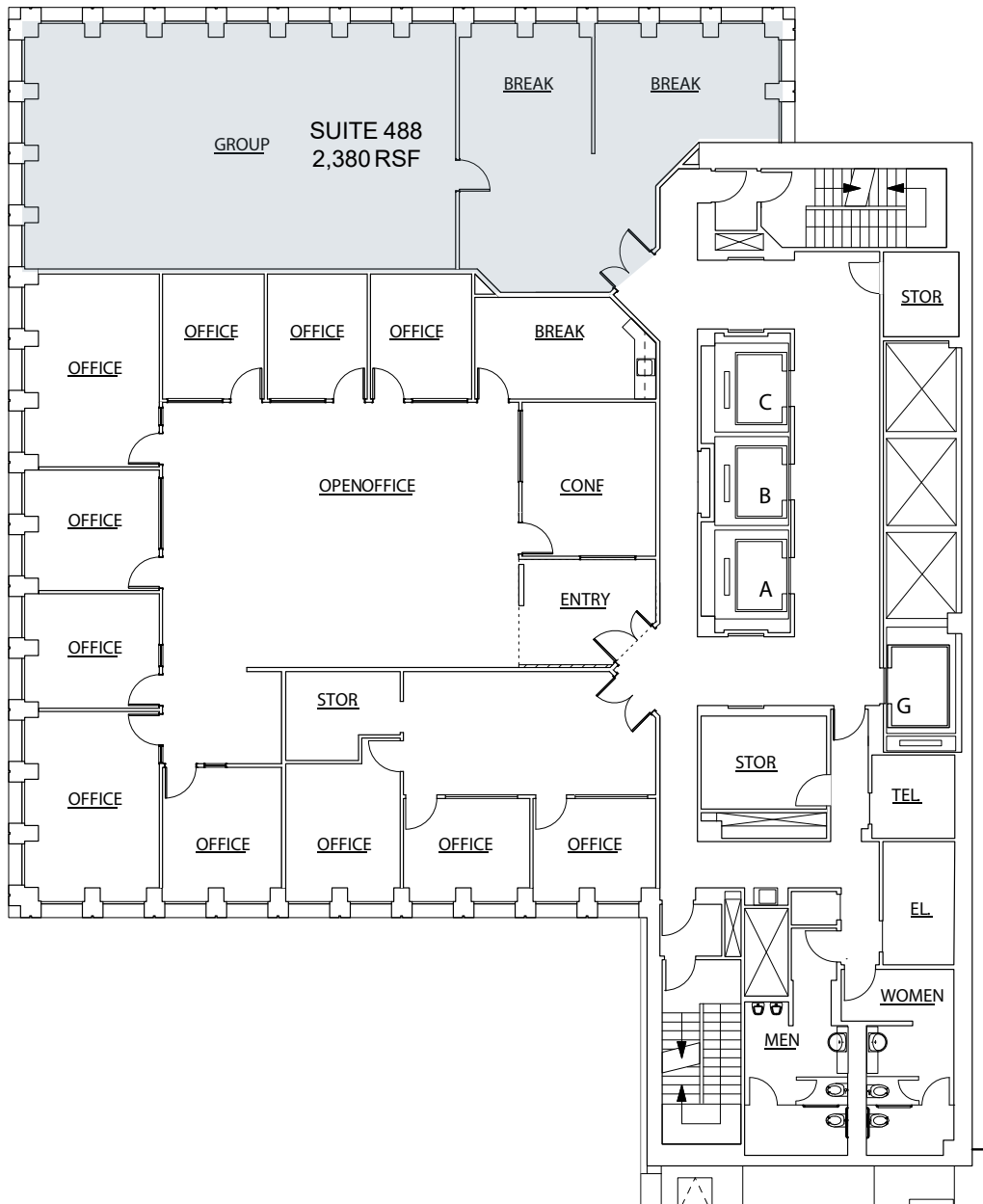


# SUITE 400 | 4,058 RSF

**Available Now**  
Partial floor

Built-out 24x40ft classroom / training space with reception and lounge area

Extensive window-line corner suite.



**SUITE 488 | 2,380 RSF**



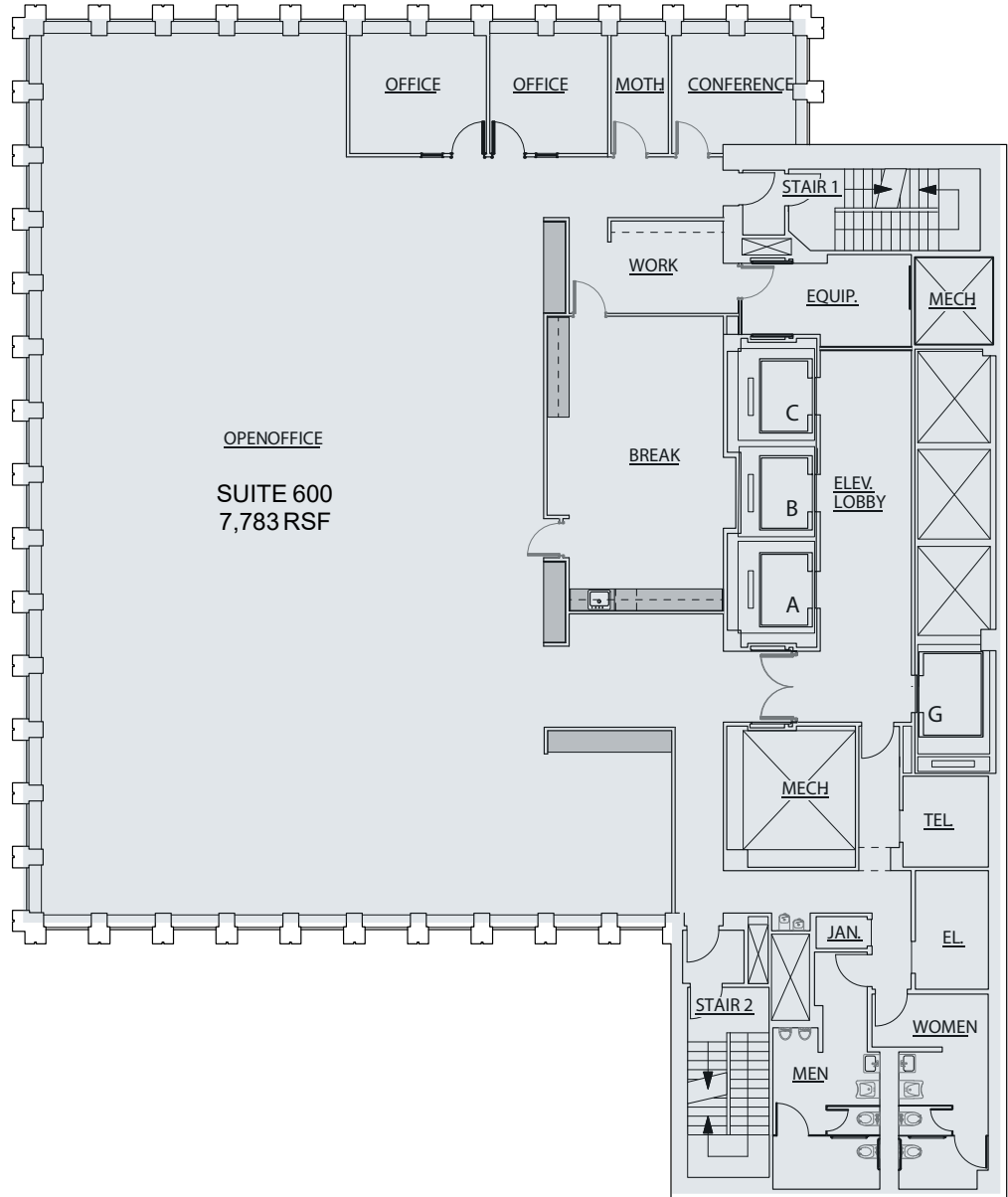
## Available Now Full floor

Full floor open plan space with  
elevator identity

3 private office / conference  
rooms

Large kitchen & break area

Extensive column free open area



# SUITE 600 | 7,783 RSF

## Available Now Partial floor

2nd gen law firm buildout with  
TI's available

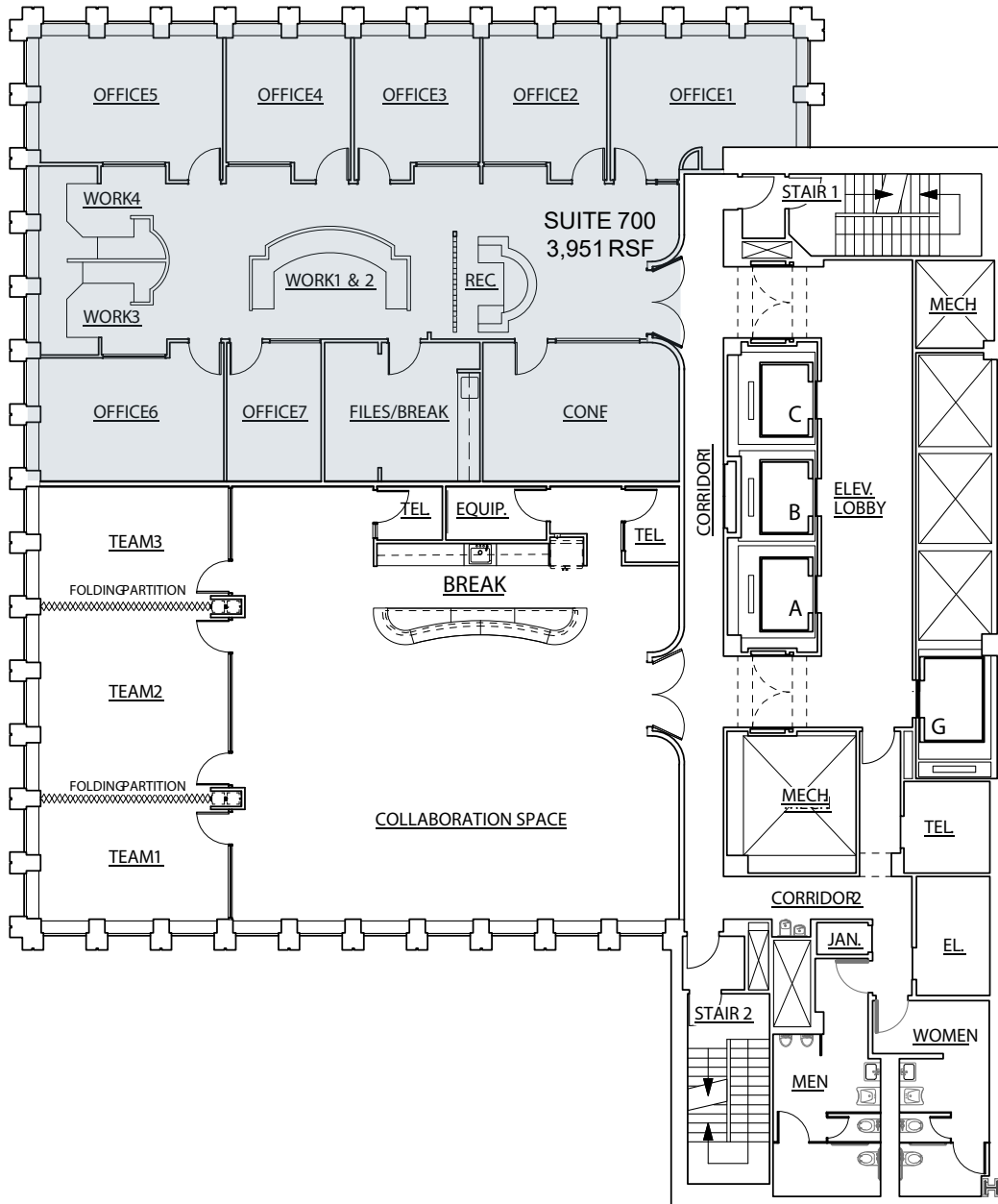
Northern city views

6 private offices

2 conference rooms

Kitchen / Break area

Central open area



# SUITE 700 | 3,951 RSF

## New Tenant Lounge!

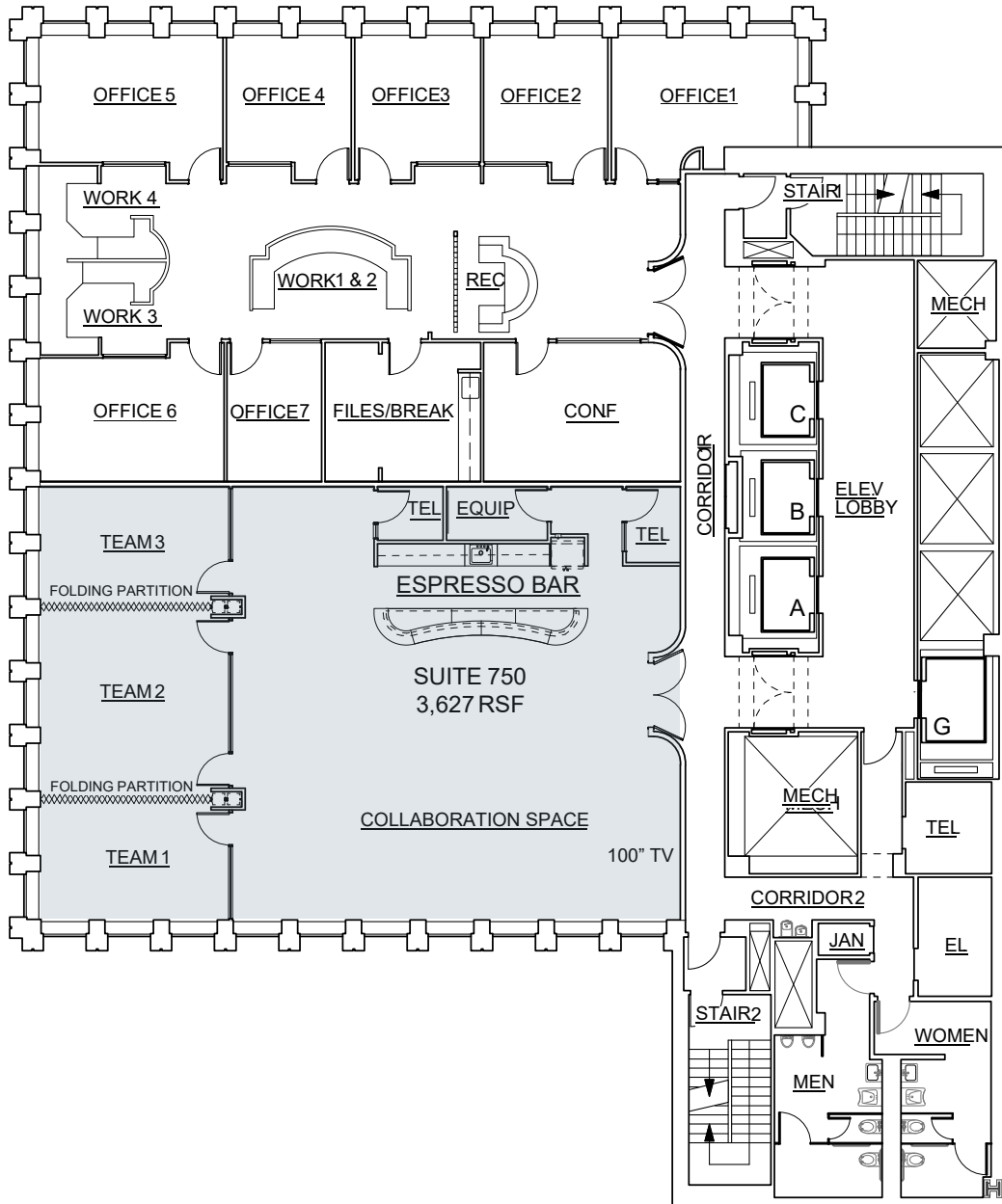
100" TV

Espresso Bar

Collaboration /  
Entertainment Space

Large conference room  
with full-scale AV system

Rentable space for  
corporate company events





## Available Now Full floor

Column free full floor

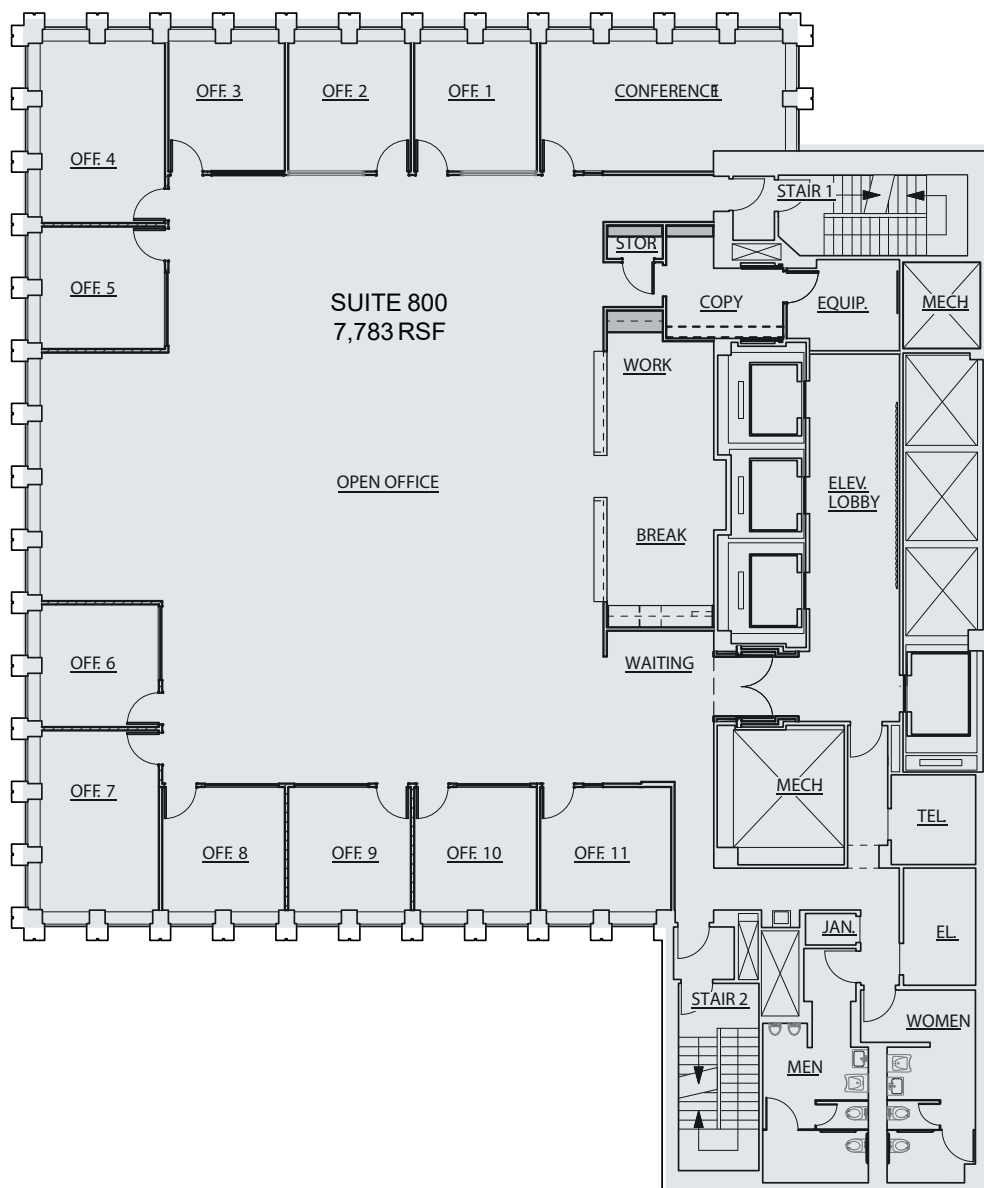
Large open layout

11 private offices  
(2 large/9 standard)

Large conference room

City views

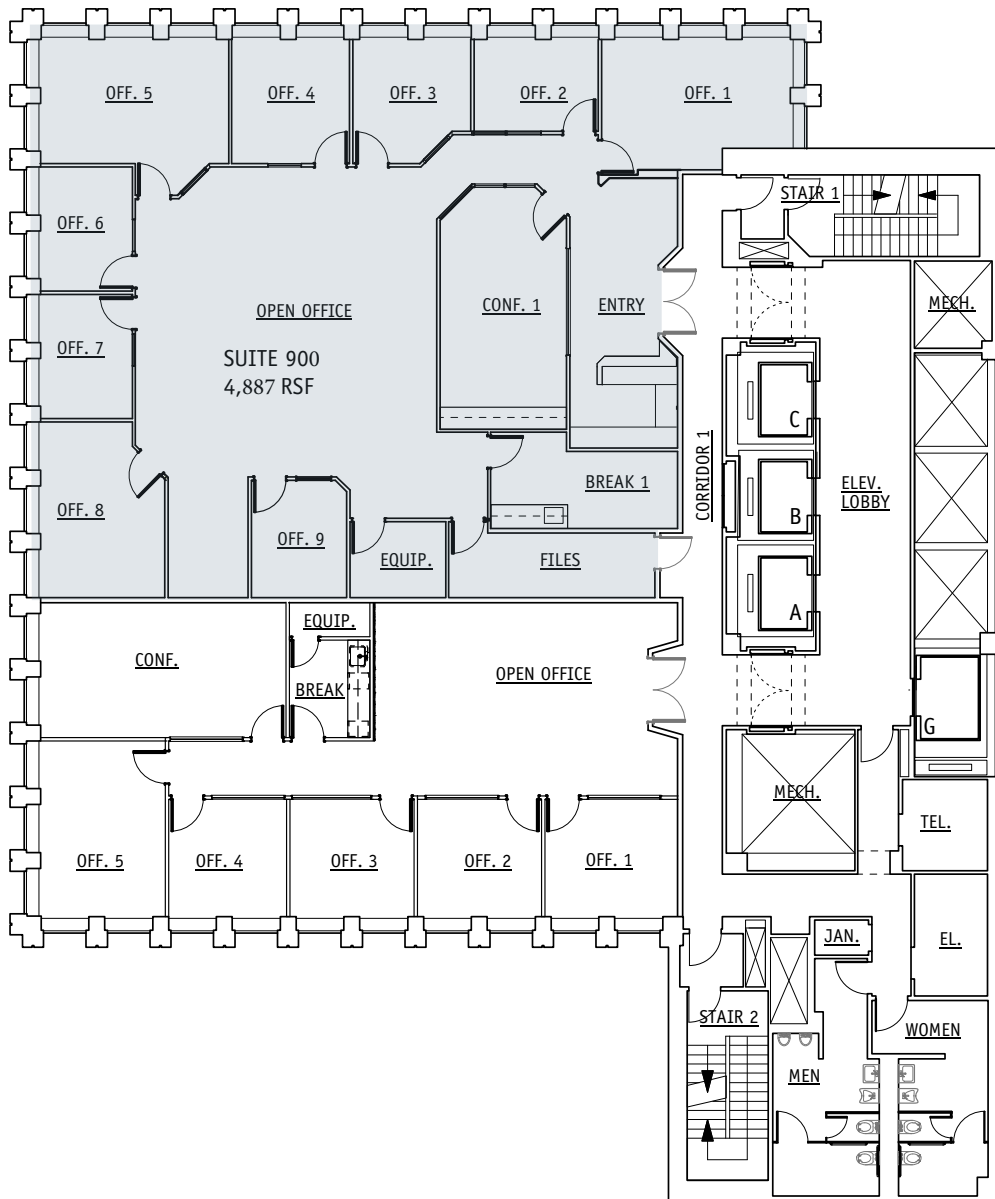
Great natural light



# SUITE 800 | 7,783 RSF

Available Now  
Full floor

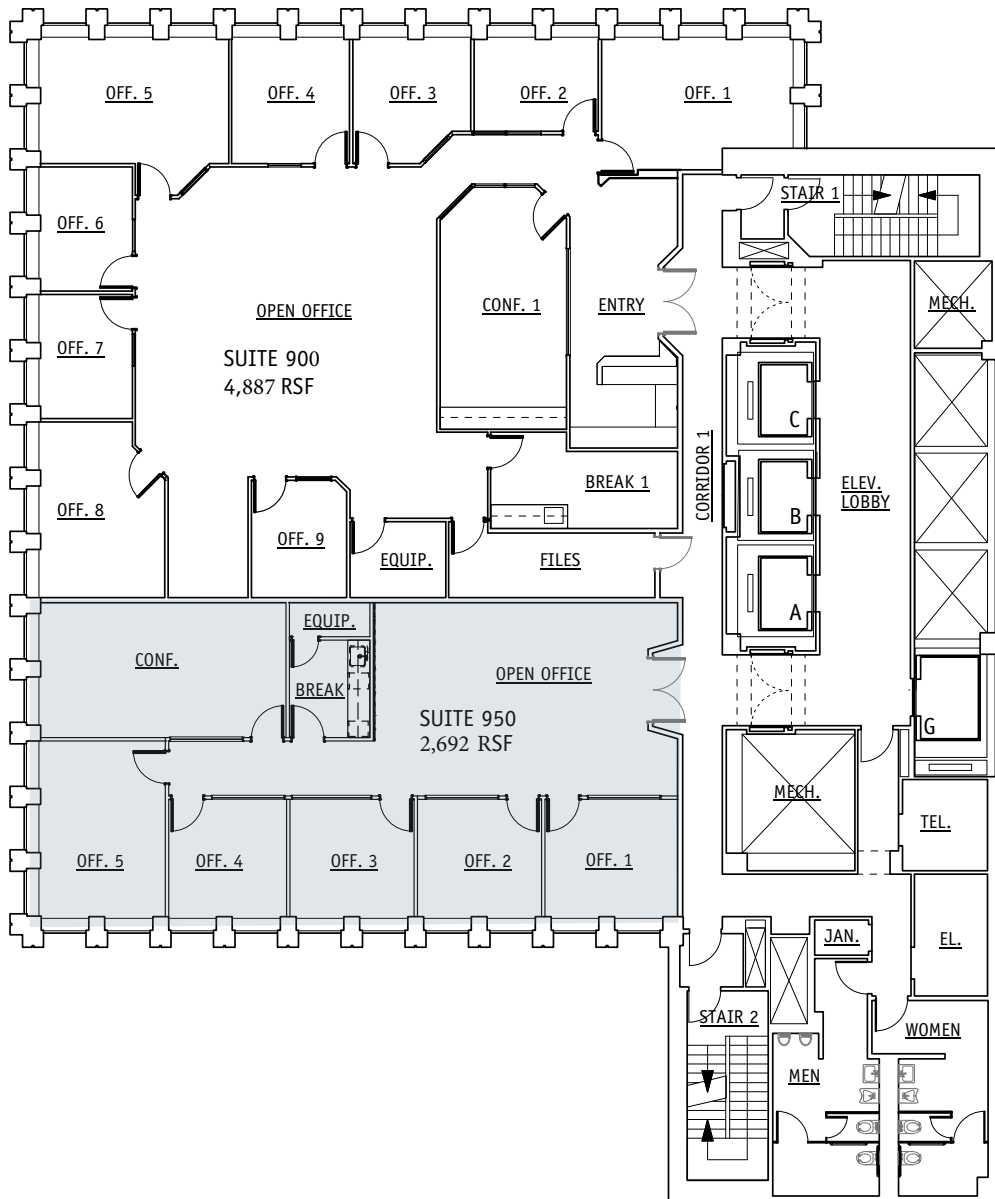
- Professional Services layout
- 8 windowline offices
- 2 interior conference rooms
- Double door elevator lobby identity



SUITE 900 | 4,887 RSF

Available Now  
Full floor

- 1 conference room
- 5 windowline offices
- Break room
- Equipment room
- Open office

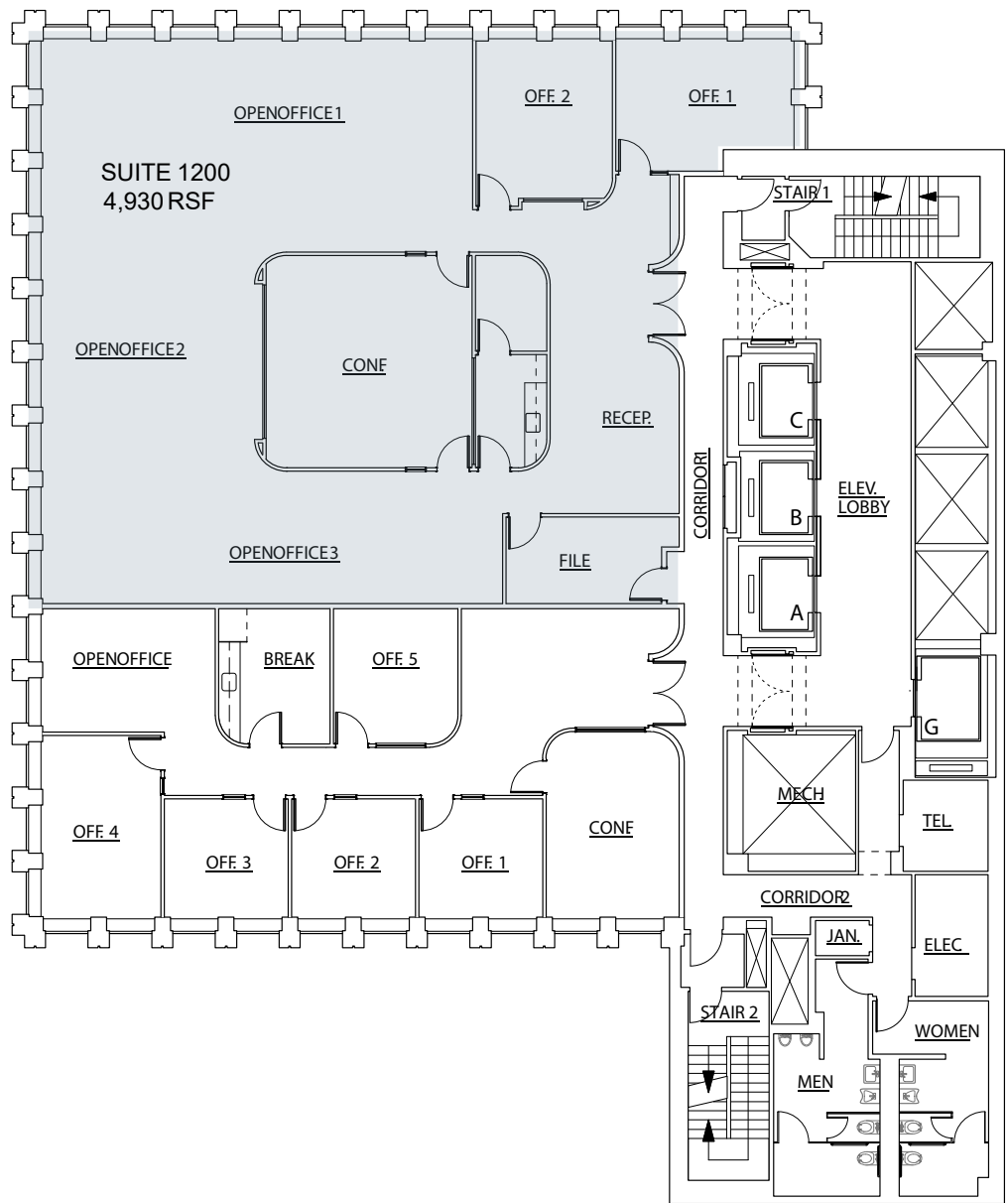


SUITE 950 | 2,692 RSF



**Available Now**  
Partial floor

- 1 Large conference room
- 2 window-line private offices
- Production
- Kitchenette
- Large, column free corner space for workstations

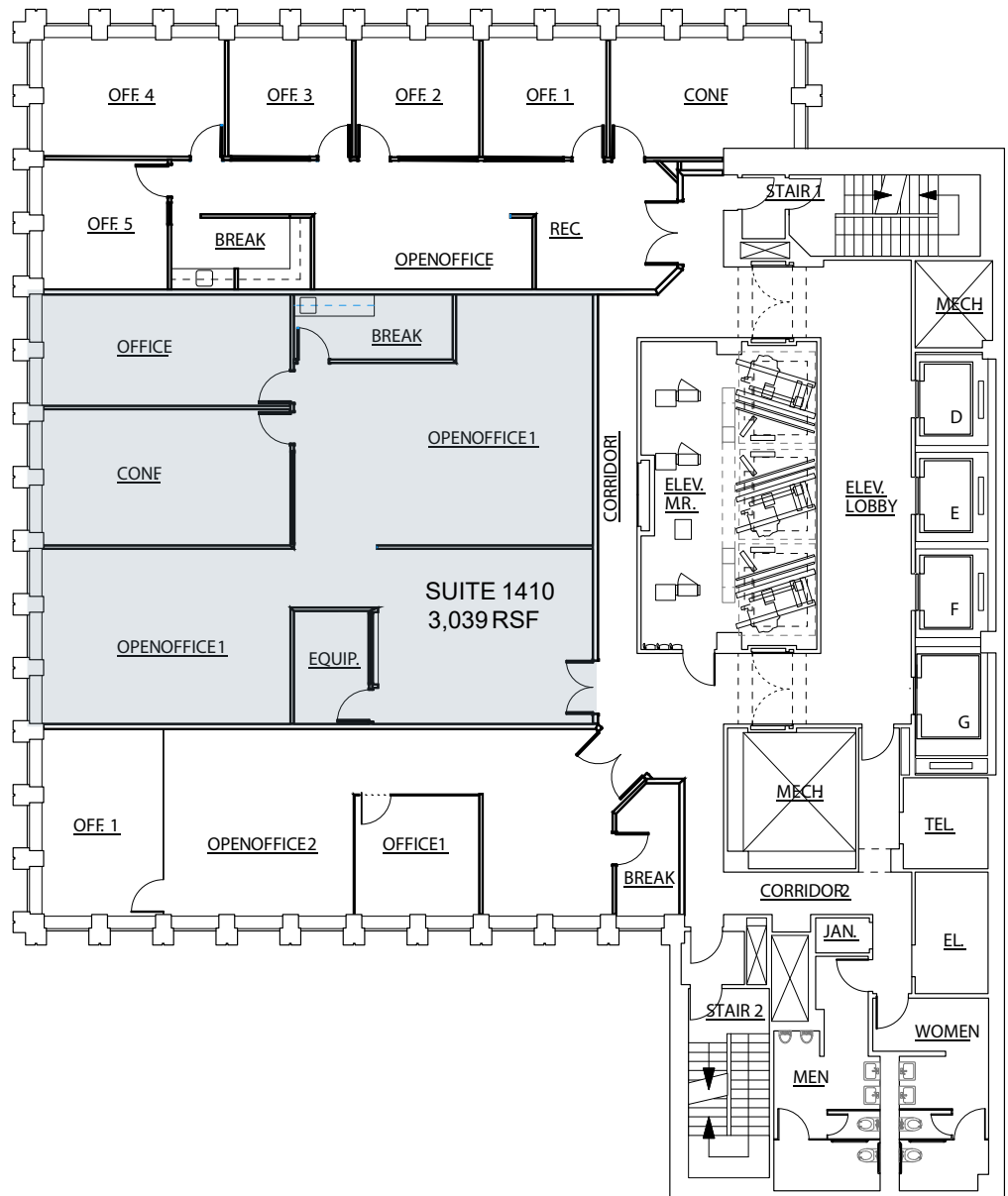


SUITE 1200 | 4,930 RSF



## Available Now Partial floor

- 2 Large conference rooms
- 1 phone booth
- Kitchenette
- Reception
- Open areas for workstations
- Western outlooks



SUITE 1410 | 3,039 RSF

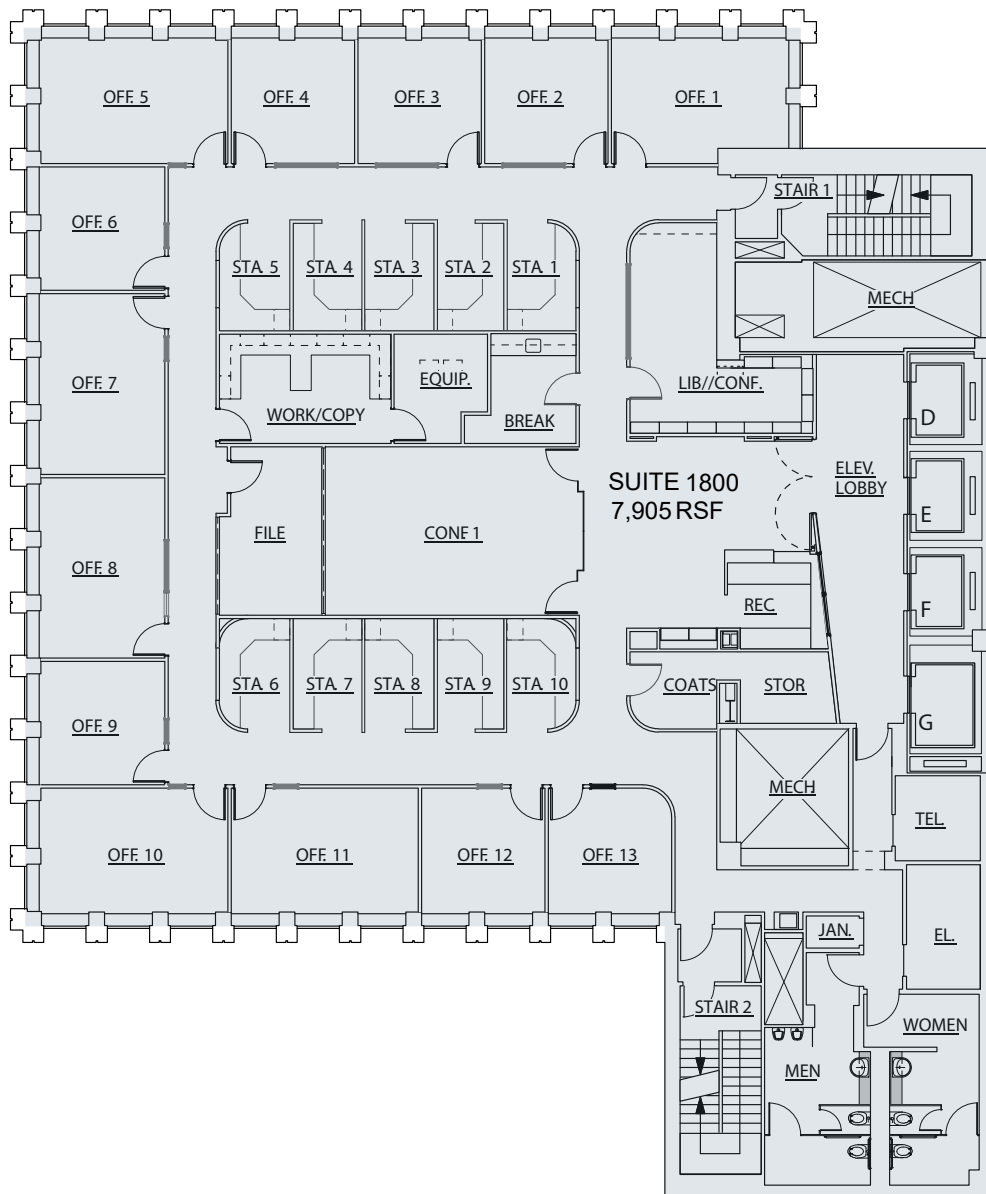
**Available Now**  
Full floor

Full floor elevator identity

Sweeping city and north bay views

13 perimeter private offices

Large conference and support areas



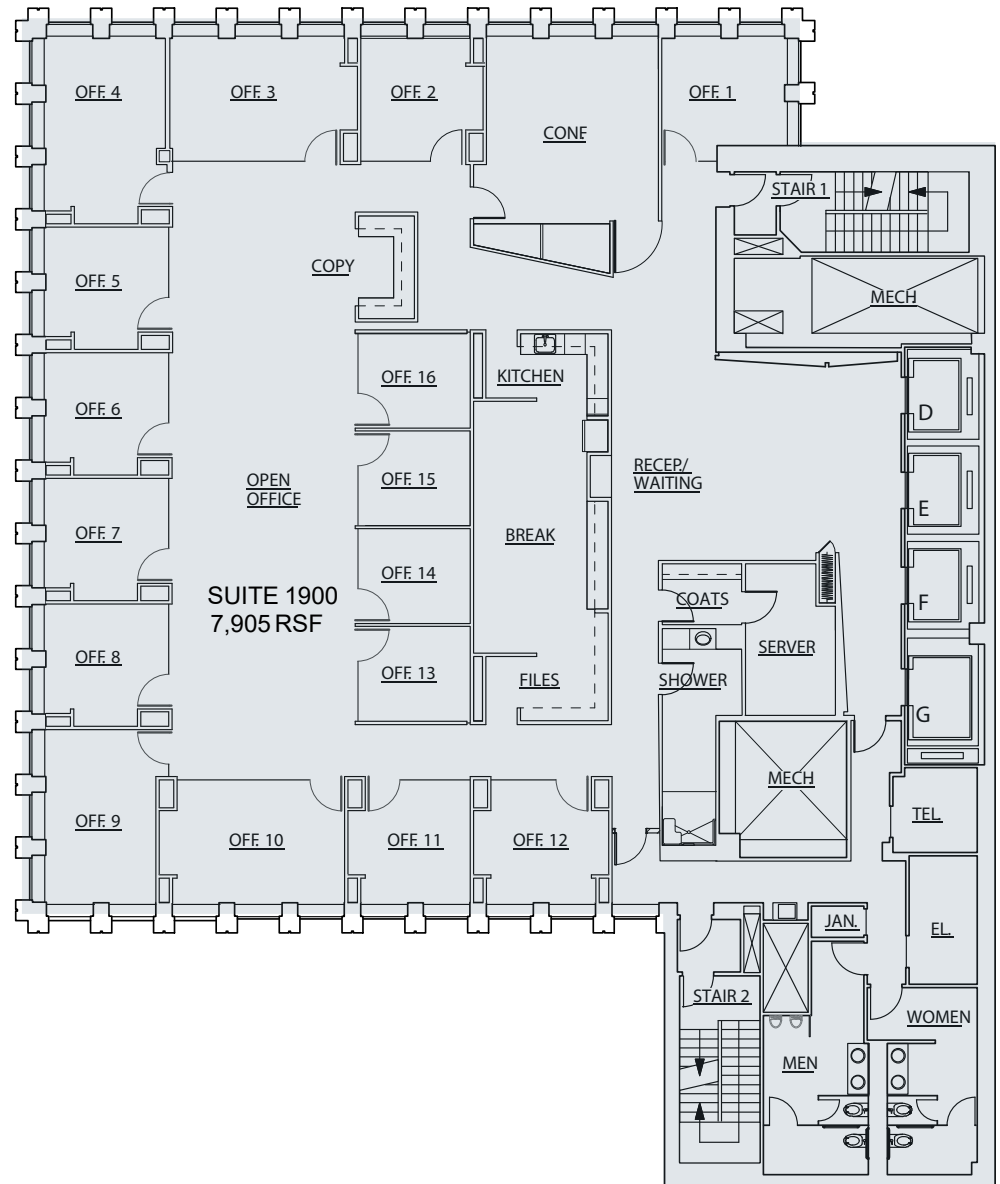
**SUITE 1800 | 7,905 RSF**

**Available Now**  
Full floor

High end law firm view space

Full floor identity

16 Private offices and large conference room

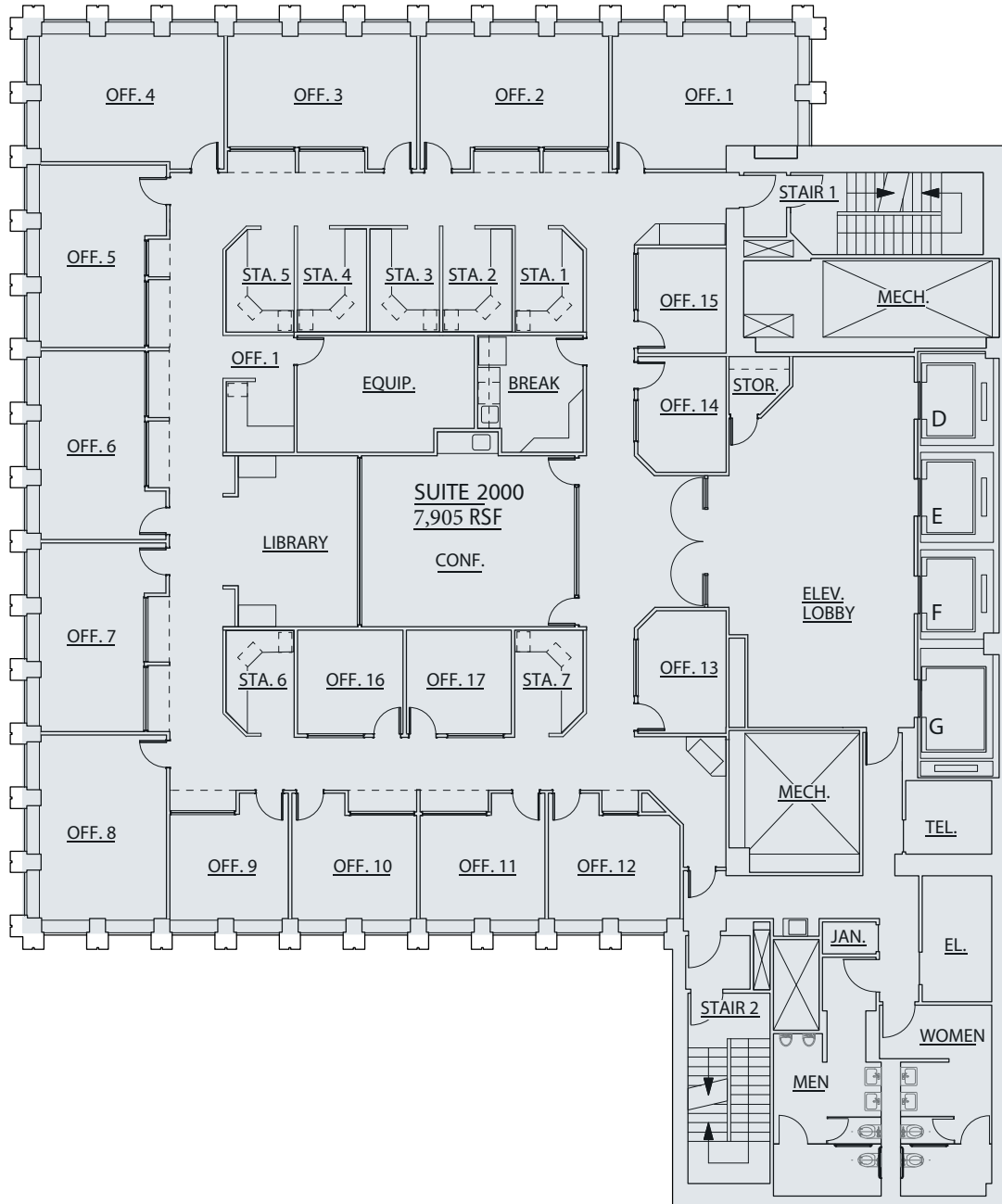


SUITE 1900 | 7,905 RSF

## Available Now

### Full floor

- Full floor law firm view space
- 9 associate offices
- 8 large window-line partner offices
- Improvement allowance available
- Elevator identity, excellent outlooks



# SUITE 2000 | 7,905 RSF

The Financial District has been the heart of San Francisco since its inception. Today it remains the premier destination for companies and visitors looking for an abundance of service and entertainment amenities.



10

minute walk to the Ferry Terminal



13

minute walk to the Salesforce Transit Center



8

minute walk to BART



- Food
- Hotels
- Retail
- Fitness

# LOCATION AMENITIES

# 456

## MONTGOMERY

For more information, contact:

**JIM SOBEL**

[jim.sobel@cushwake.com](mailto:jim.sobel@cushwake.com)

+1 415 568 3437

LIC #00965752

**BRENDON KANE**

[brendon.kane@cushwake.com](mailto:brendon.kane@cushwake.com)

+1 415 677 0466

LIC #01884552

**JACK HERZOG**

[jack.herzog@cushwake.com](mailto:jack.herzog@cushwake.com)

+1 415 306 3787

LIC #02144267

©2026 Cushman & Wakefield. All rights reserved. The information contained in this communication is strictly confidential. This information has been obtained from sources believed to be reliable but has not been verified. NO WARRANTY OR REPRESENTATION, EXPRESS OR IMPLIED, IS MADE AS TO THE CONDITION OF THE PROPERTY (OR PROPERTIES) REFERENCED HEREIN OR AS TO THE ACCURACY OR COMPLETENESS OF THE INFORMATION CONTAINED HEREIN, AND SAME IS SUBMITTED SUBJECT TO ERRORS, OMISSIONS, CHANGE OF PRICE, RENTAL OR OTHER CONDITIONS, WITHDRAWAL WITHOUT NOTICE, AND TO ANY SPECIAL LISTING CONDITIONS IMPOSED BY THE PROPERTY OWNER(S). ANY PROJECTIONS, OPINIONS OR ESTIMATES ARE SUBJECT TO UNCERTAINTY AND DO NOT SIGNIFY CURRENT OR FUTURE PROPERTY PERFORMANCE. COE-PM-WEST- 05/27/26