

# 61 POMEROY AVENUE, BUILDING 1, MERIDEN, CT

MEDICAL SPACE FOR LEASE



## Property Description & Highlights

- Free-standing single-story 5,705 SF Building
- Located off Exit 67 of the Merritt Parkway and easily accessible from Route 91
- Abundant and accessible parking
- Building owned and managed by Healthcare Realty (NYSE:HR)
- **EXISTING CLINICAL INSTALLATION**

## Availability

FLOOR	RSF
Entire Building	5,705 RSF



Building owned and managed by  
**HEALTHCARE REALTY**

**MAUREEN O'BOYLE**  
203 326 5810  
[maureen.oboyle@cushwake.com](mailto:maureen.oboyle@cushwake.com)

**GERRY LEES**  
203 326 5821  
[gerry.lees@cushwake.com](mailto:gerry.lees@cushwake.com)

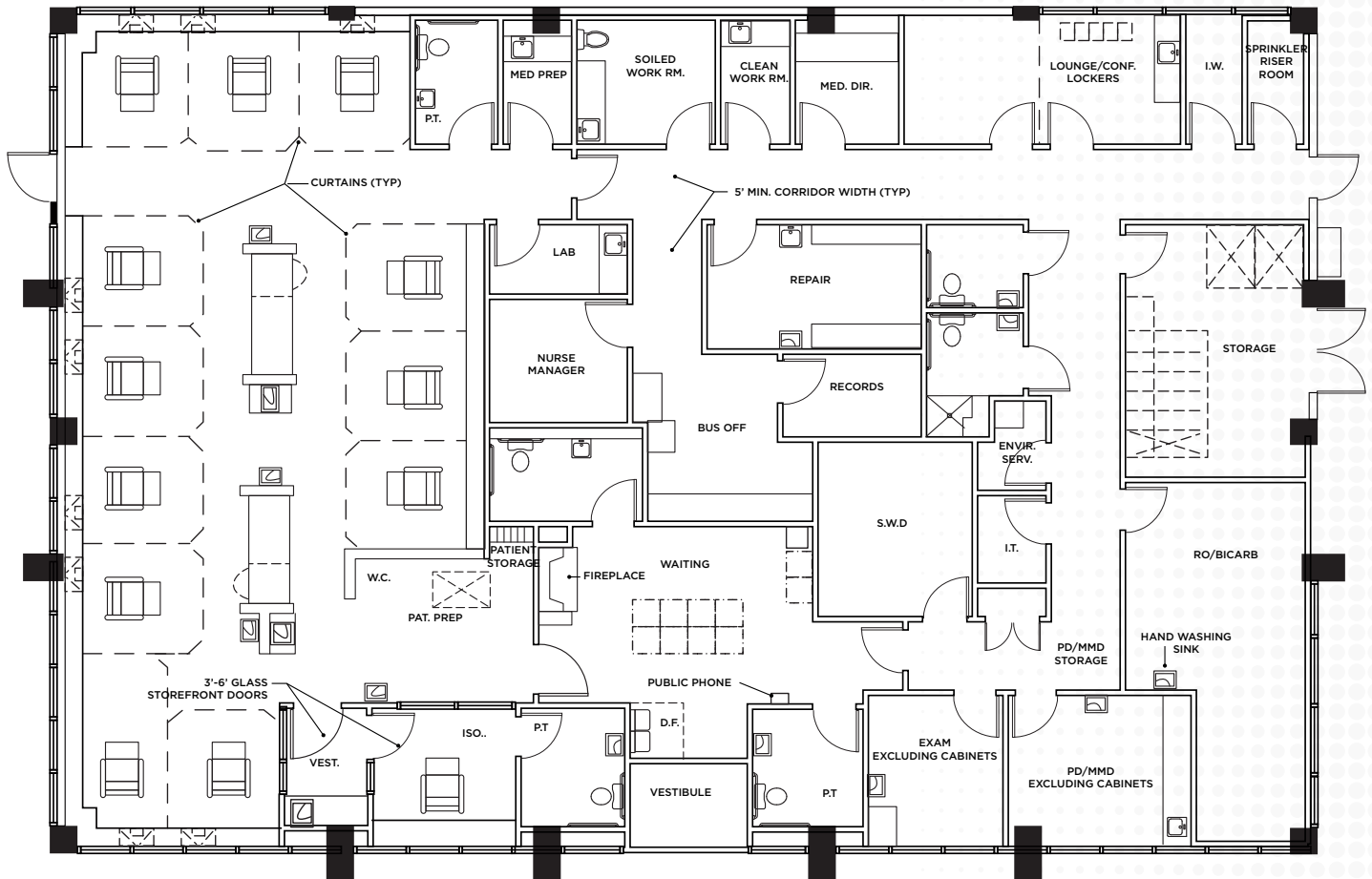
©2024 Cushman & Wakefield. All rights reserved. The information contained in this communication is strictly confidential. This information has been obtained from sources believed to be reliable but has not been verified. No warranty or representation, express or implied, is made as to the condition of the property (or properties) referenced herein or as to the accuracy or completeness of the information contained herein, and same is submitted subject to errors, omissions, change of price, rental or other conditions, withdrawal without notice, and to any special listing conditions imposed by the property owner(s). Any projections, opinions or estimates are subject to uncertainty and do not signify current or future property performance.

Cushman & Wakefield of Connecticut, Inc.  
400 Atlantic Street, Suite 200  
Stamford, CT 06901  
203 326 5800  
[www.cushmanwakefield.com](http://www.cushmanwakefield.com)

# 61 POMEROY AVENUE, BUILDING 1, MERIDEN, CT

MEDICAL SPACE FOR LEASE

ENTIRE BUILDING: 5,705 SF



Building owned and managed by  
**HEALTHCARE REALTY**

**MAUREEN O'BOYLE**  
203 326 5810  
[maureen.oboyle@cushwake.com](mailto:maureen.oboyle@cushwake.com)

**GERRY LEES**  
203 326 5821  
[gerry.lees@cushwake.com](mailto:gerry.lees@cushwake.com)

©2024 Cushman & Wakefield. All rights reserved. The information contained in this communication is strictly confidential. This information has been obtained from sources believed to be reliable but has not been verified. No warranty or representation, express or implied, is made as to the condition of the property (or properties) referenced herein or as to the accuracy or completeness of the information contained herein, and same is submitted subject to errors, omissions, change of price, rental or other conditions, withdrawal without notice, and to any special listing conditions imposed by the property owner(s). Any projections, opinions or estimates are subject to uncertainty and do not signify current or future property performance.

Cushman & Wakefield of Connecticut, Inc.  
400 Atlantic Street, Suite 200  
Stamford, CT 06901  
203 326 5800  
[www.cushmanwakefield.com](http://www.cushmanwakefield.com)