

701 E CHATHAM ST
CARY, NC 27511

2nd Generation Restaurant For Lease



Chip Lanier, MBA
Vice President
clanier@lee-associates.com
O 919.576.2516
M 919.291.6282

Jenn Olevitch-Roberson
Vice President
jolevitch-roberson@lee-associates.com
O 919.576.2517
M 919.345.1752

Loup Gajigianis
Associate Broker
lgajigianis@lee-associates.com
O 984.684.5008
M 919.338.4018

 **LEE &
ASSOCIATES**
COMMERCIAL REAL ESTATE SERVICES
RALEIGH • DURHAM • WILMINGTON

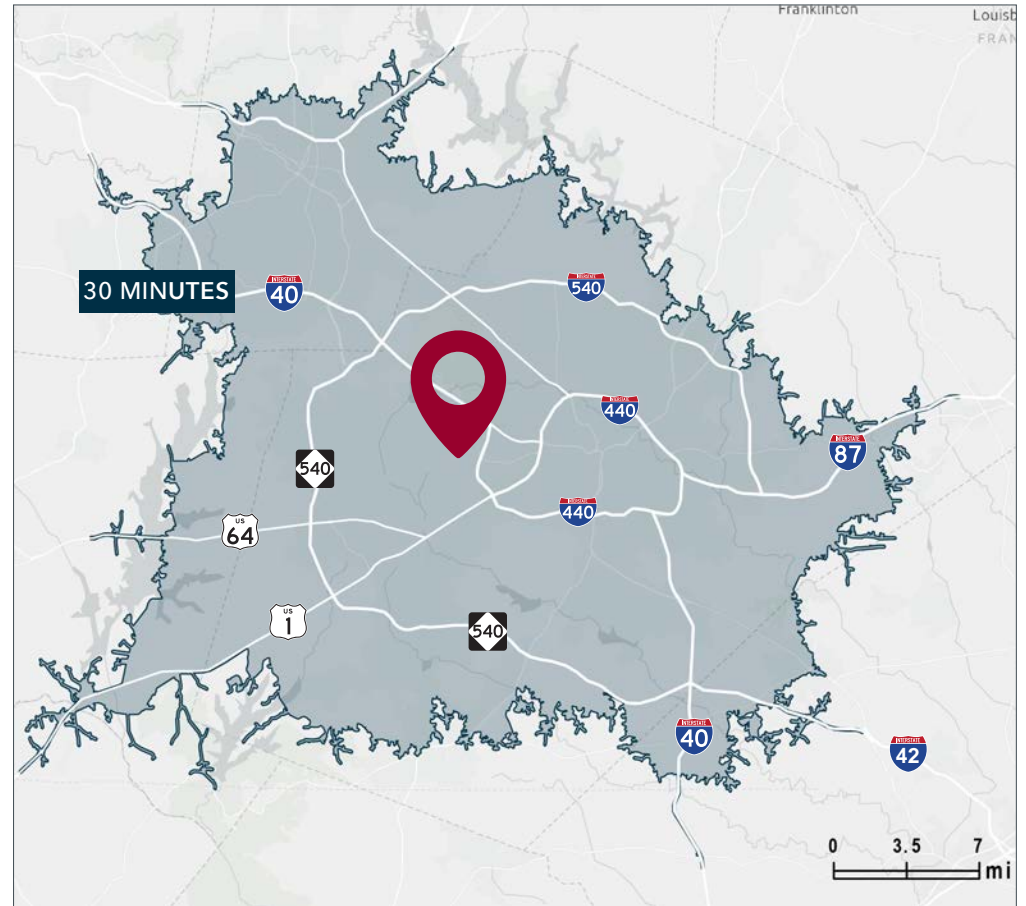
PROPERTY OVERVIEW

AVAILABLE

- Suite 100: 4,730 SF, 2nd Generation restaurant
- Lease rate: \$32.00/SF, Gross

PROPERTY HIGHLIGHTS

- Prime location at the intersection of E. Chatham St and SE Maynard Rd
- Patio seating
- On-site parking
- All FF&E in place and available for purchase
- Direct visibility to the traffic on E. Chatham St
- Minutes from Downtown Cary, Wake Med Soccer Park, I-40, and Fenton



701 E CHATHAM ST • CARY, NC 27511

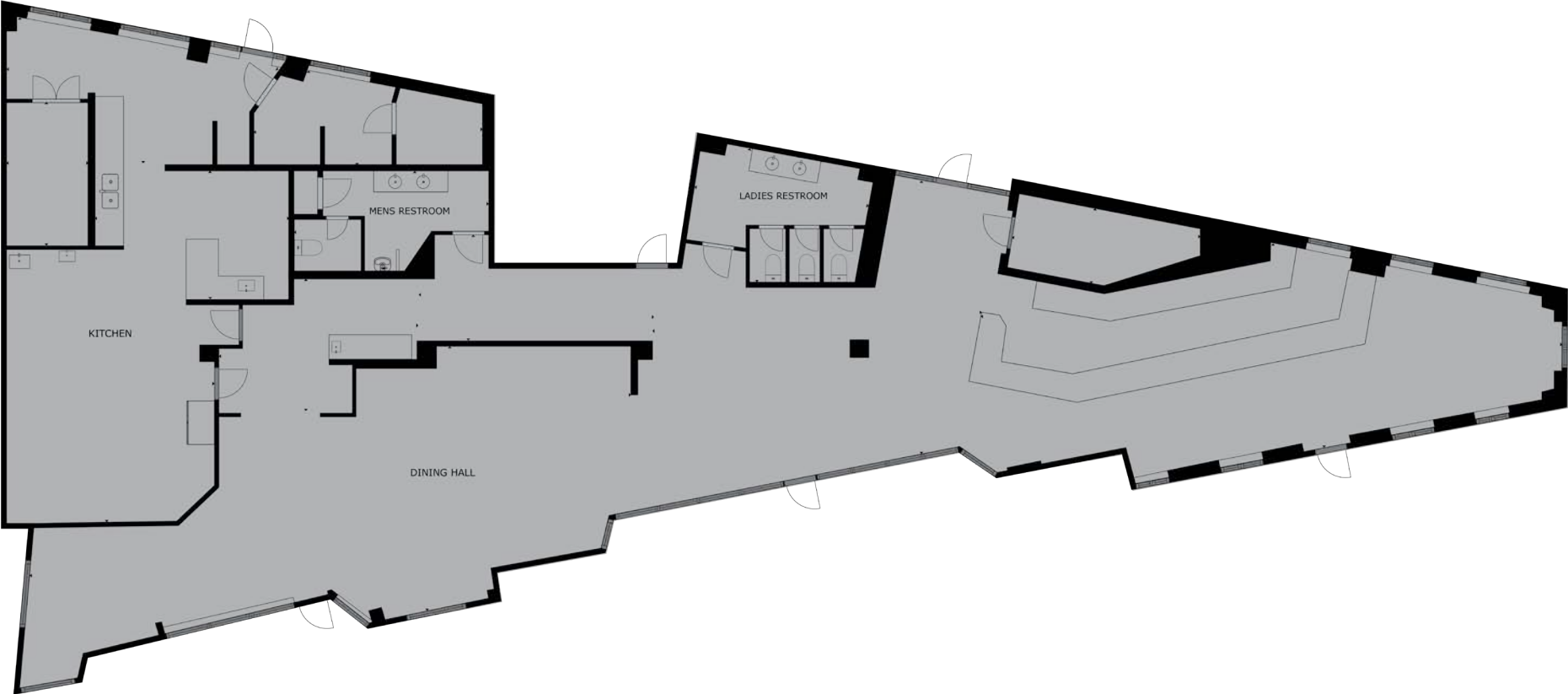


DEMOGRAPHICS

	1 Mile	3 Miles	5 Miles
Population	12,199	79,018	188,351
Avg HH Income	\$118,127	\$126,612	\$141,025
Number of Businesses	722	4,625	10,013
Number of Employees	7,946	49,675	124,289
Total Daytime Population	13,373	95,472	240,962

Source: ESRI 2025

FLOOR PLAN



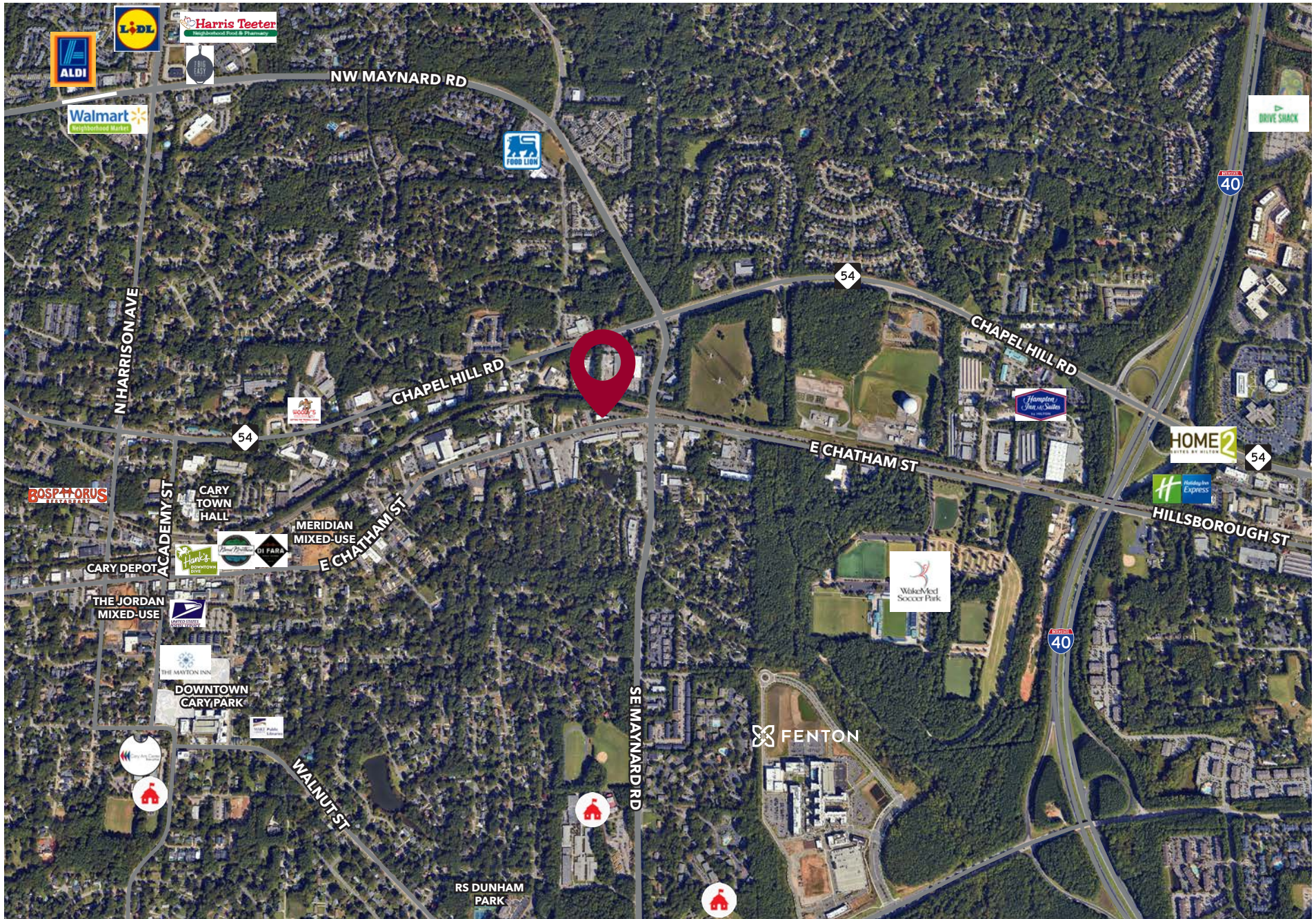
701 E CHATHAM ST • CARY, NC 27511

PHOTOS



701 E CHATHAM ST • CARY, NC 27511

AREA OVERVIEW



701 E CHATHAM ST • CARY, NC 27511

Presented by:

Chip Lanier, MBA
Vice President
clanier@lee-associates.com
O 919.576.2516
M 919.291.6282

Jenn Olevitch-Roberson
Vice President
jolevitch-roberson@lee-associates.com
O 919.576.2517
M 919.345.1752

Loup Gajigianis
Associate Broker
lgajigianis@lee-associates.com
O 984.684.5008
M 919.338.4018



All information furnished regarding property for sale, rental or financing is from sources deemed reliable, but no warranty or representation is made to the accuracy thereof and same is submitted to errors, omissions, change of price, rental or other conditions prior to sale, lease or financing or withdrawal without notice. No liability of any kind is to be imposed on the broker herein.

100 Walnut Street | Cary, NC 27511 | 919-576-2500 | lee-associates.com/raleigh