

CONEXUS PLAZA

1801 HAMILTON ST. | REGINA, SK



Nestled amongst the finest that Regina has to offer, Conexus Plaza is perfectly situated within downtown Regina and within walking distance to restaurants, retail, entertainment, and hotels. With its natural combination of glass curtainwall and brick facade, this 12 storey Class-A building offers over 163,000 square feet of office space, with an additional 5,900 square feet of main floor retail.

BUILDING HIGHLIGHTS

- 12 storey Class A office building with a total of 163,000 square feet
- One level heated underground parking, plus additional parking at the adjacent Rose Street Parkade
- Climate controlled pedway connections to all major downtown office buildings
- Exterior of the building has limited brick with a glass curtainwall, offering an abundance of natural light
- Major tenants include Mckercher, IBM, CIBC Wood Gundy, Marsh Canada, iQmetrix
- Excellent access to all major transit routes
- Close proximity to thriving downtown restaurants, retail, hotels, and Cornwall Centre
- Professionally managed and maintained by Harvard Property Management Inc.

AVAILABLE SPACE

SUITE 115	3,236 SQUARE FEET
SUITE 310	1,461 SQUARE FEET
SUITE 502	940 SQUARE FEET
RENTAL RATE NEGOTIABLE	OP COSTS & PROPERTY TAXES \$16.65 PSF PER ANNUM

RYANN BRAATEN

LEASING MANAGER, HARVARD REAL ESTATE INC.

T | 306.777.0690 E | rbraaten@harvard.ca

CONEXUS PLAZA

1801 HAMILTON ST. | REGINA, SK

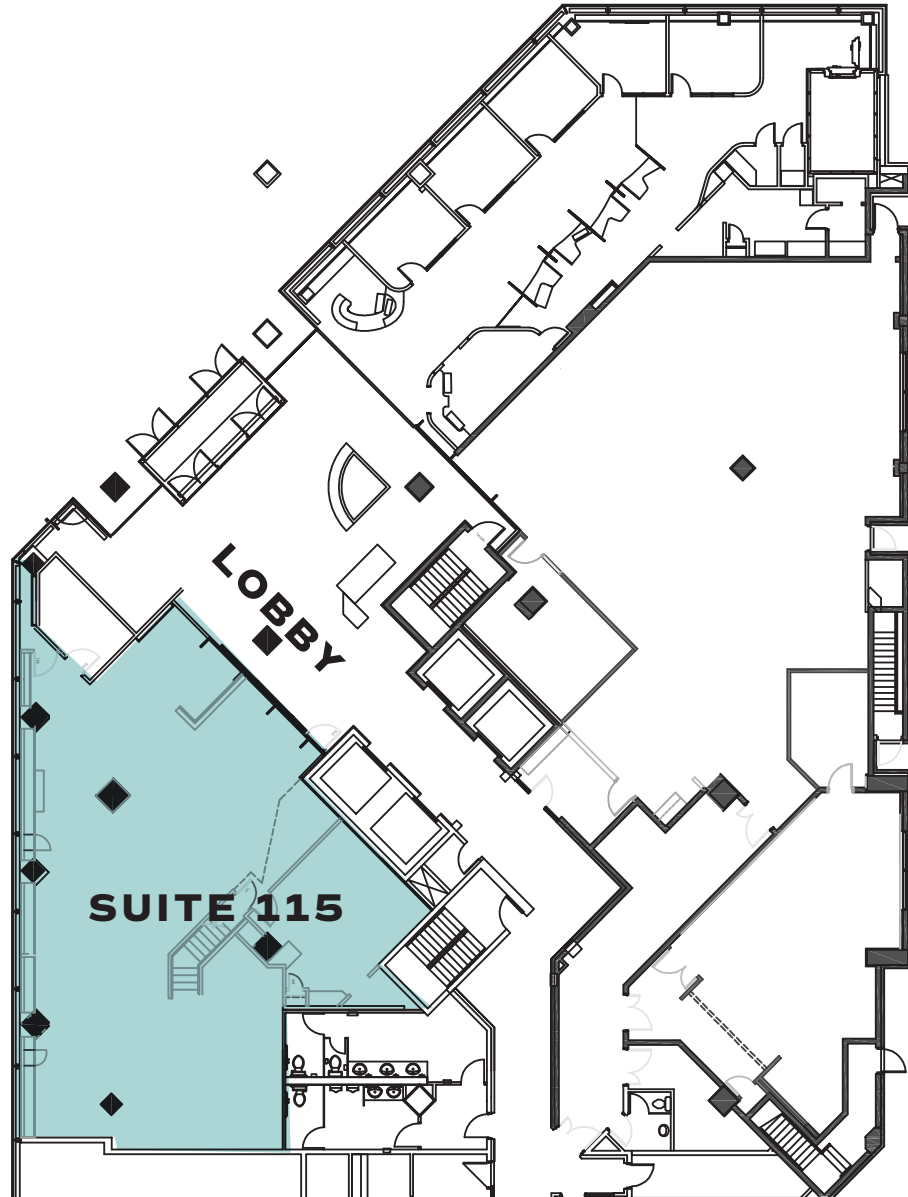
SUITE 115

3,236

SQUARE FEET

11TH AVENUE

HAMILTON STREET



AVAILABLE: EARLY 2020

RYANN BRAATEN

LEASING MANAGER, HARVARD REAL ESTATE INC.

T | 306.777.0690

E | rbraaten@harvard.ca

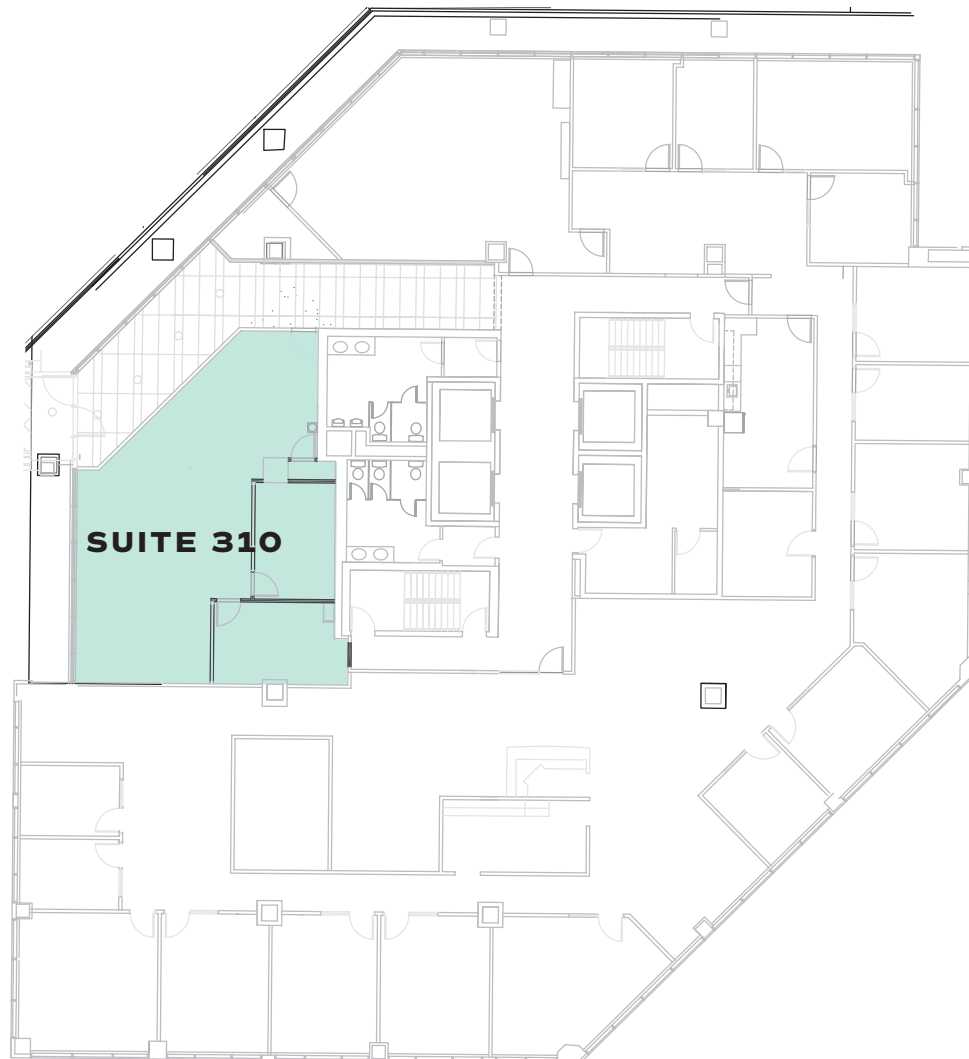
CONEXUS PLAZA

1801 HAMILTON ST. | REGINA, SK

SUITE 310

1,461

SQUARE FEET



AVAILABLE: EARLY 2020

RYANN BRAATEN

LEASING MANAGER, HARVARD REAL ESTATE INC.

T | 306.777.0690

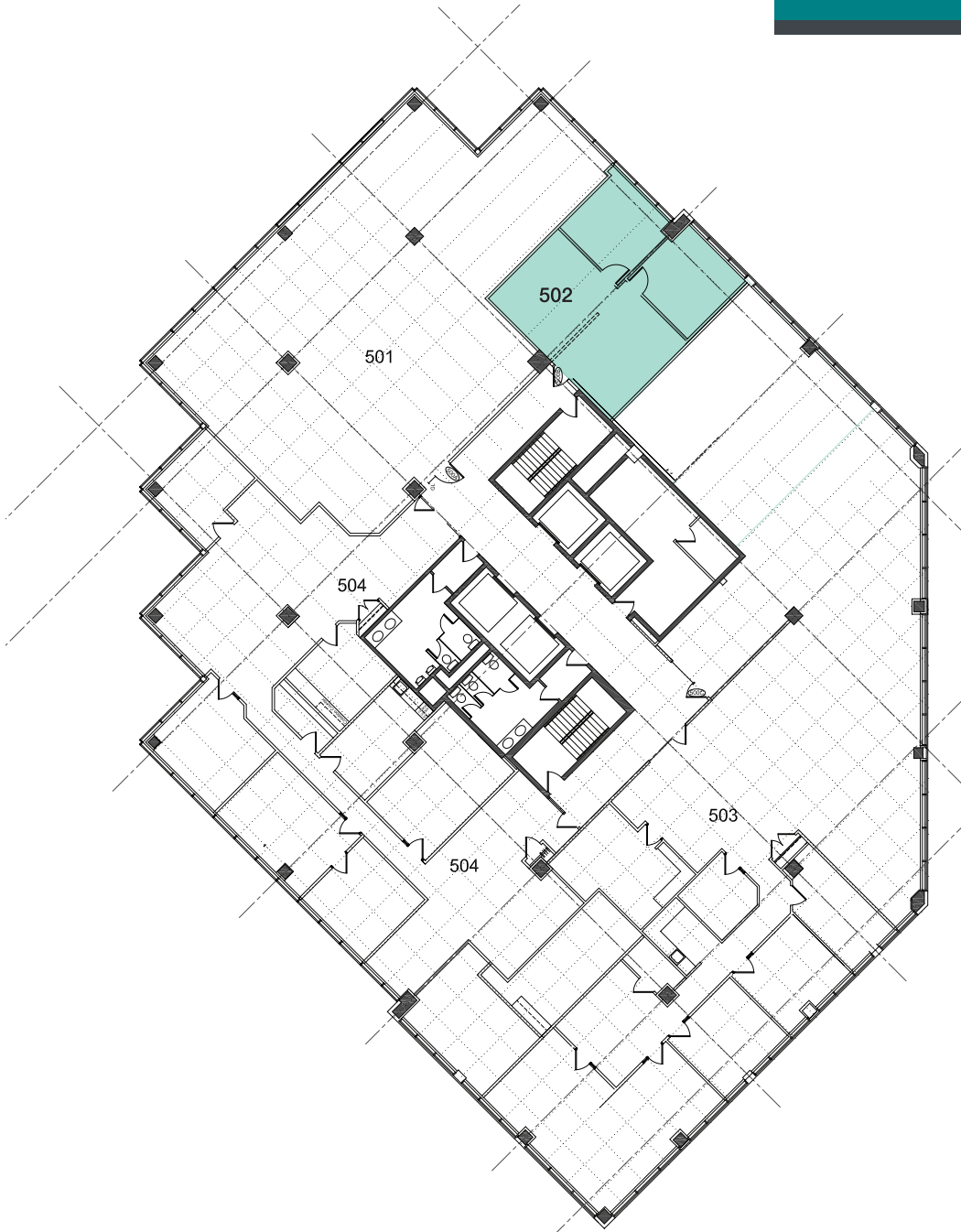
E | rbraaten@harvard.ca

CONEXUS PLAZA

1801 HAMILTON ST. | REGINA, SK

SUITE 502

940
SQUARE FEET



5TH FLOOR PLAN
SCALE: NTS

RYANN BRAATEN

LEASING MANAGER, HARVARD REAL ESTATE INC.

T | 306.777.0690

E | rbraaten@harvard.ca