

THIS BLOCK RESERVED FOR  
THE CLERK OF THE SUPERIOR COURT.

**SURVEYORS CERTIFICATE**

AS REQUIRED BY SUBSECTION (d) OF O.C.G.A. SECTION 15-6-67, THIS PLAT HAS BEEN PREPARED BY A LAND SURVEYOR AND APPROVED BY ALL APPLICABLE LOCAL JURISDICTIONS FOR RECORDING AS EVIDENCED BY APPROVAL CERTIFICATES, SIGNATURES, STAMPS, OR STATEMENTS HEREON.

THE FOLLOWING GOVERNMENTAL BODIES HAVE APPROVED THIS PLAT:

APPROVING OFFICIAL

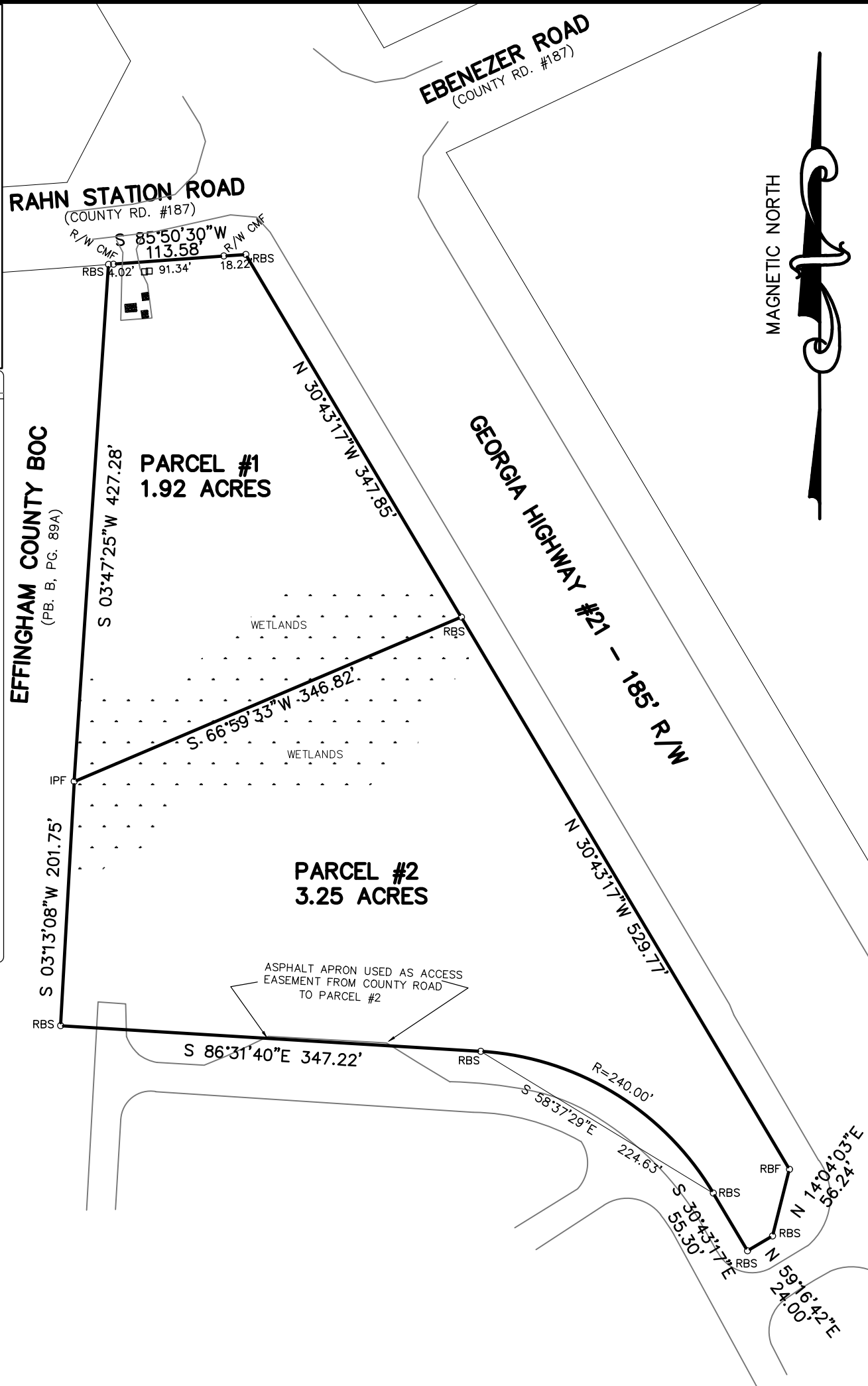
DATE: \_\_\_\_\_

SUCH APPROVALS OR AFFIRMATIONS SHOULD BE CONFIRMED WITH THE APPROPRIATE GOVERNMENTAL BODIES BY ANY PURCHASER OR USER OF THIS PLAT AS TO INTENDED USE OF ANY PARCEL. FURTHERMORE, THE UNDERSIGNED LAND SURVEYOR CERTIFIES THAT THIS PLAT COMPLIES WITH THE MINIMUM TECHNICAL STANDARDS FOR PROPERTY SURVEYS IN GEORGIA AS SET FORTH IN THE RULES AND REGULATIONS OF THE GEORGIA STATE BOARD OF REGISTRATION FOR PROFESSIONAL ENGINEERS AND LAND SURVEYORS AND SET FORTH IN O.C.G.A. SECTION 15-6-67.

*Donald W. Marsh*  
DONALD W. MARSH  
GA. RLS #2371  
DATE: SEPTEMBER 3, 2020



LEGEND	
○ IBF	IRON BAR FOUND
○ IPF	IRON PIPE FOUND
○ IPS	IRON PIPE SET
○ RBF	REBAR FOUND
○ RBS	5/8" REBAR SET
○ CMF	CONCRETE MONUMENT FOUND
○ R/W CMF	RIGHT-OF-WAY CMF
○ NS	NAIL SET
—OHP—	OVERHEAD POWER LINE
—X—	FENCE



**SURVEY OF 2 PARCELS OF  
LAND IN THE 9th GMD OF  
EFFINGHAM COUNTY, GEORGIA  
SURVEY FOR:  
*SHEA BUSINESS VENTURES, LLC***

NOTE:  
THIS SURVEY WAS COMPLETED USING A TOPCON GPT 3003 TOTAL STATION AND A SOKKIA GRX-1 DUAL FREQUENCY GPS BASE AND ROVER. ALL POINTS COLLECTED WITH GPS HAD A POSITIONAL TOLERANCE OF LESS THAN 0.03 RESIDUAL WITH 95% CONFIDENCE LEVEL.

PLAT CLOSURE 1:

NOTES
1) THE TERM "CERTIFICATE" AS USED IN RULE "180-6-.09(2) AND (3)" AND RELATING TO PROFESSIONAL ENGINEERING OR LAND SURVEYING SERVICES, AS DEFINED IN O.C.G.A. 43-15-2(6) AND (11), SHALL MEAN A SIGNED STATEMENT BASED UPON FACTS AND KNOWLEDGE KNOWN TO THE REGISTRANT AND IS NOT A GUARANTEE OR WARRANTY, EITHER EXPRESSED OR IMPLIED.
2) THIS SURVEY COMPLIES WITH BOTH THE RULES OF THE GEORGIA BOARD OF REGISTRATION FOR PROFESSIONAL ENGINEERS AND LAND SURVEYORS AND THE OFFICIAL CODE OF GEORGIA ANNOTATED (OCGA), IN THAT WHERE A CONFLICT EXISTS BETWEEN THOSE TWO SETS OF SPECIFICATIONS, THE REQUIREMENTS OF LAW PREVAIL.

DONALD W. MARSH & ASSOCIATES  
9 SOUTH MULBERRY STREET  
STATESBORO, GEORGIA 30458  
(912) 764-2397

SURVEY DATE: SEPTEMBER 19, 2019  
PLAT DATE: SEPTEMBER 20, 2019  
SCALE: 1" = 100'

FILE NO. 1808009-A.DWG  
FILE NO. 1808009.CRD

