

Ravenwood Office Plaza

2175 NW 86th Street
Clive, Iowa 50325
www.cbre.com/desmoines

Located just south of Hickman with frontage on 86th Street.
"Move-in" ready office suites. Utilities included in lease rate.

Available Suites

| | | |
|------------|----------|-------------|
| + Suite 1B | 1,550 SF | \$2,000/Mo. |
| + Suite 1D | 1,100 SF | \$1,050/Mo. |
| + Suite 6A | 380 SF | \$600/Mo. |
| + Suite 11 | 770 SF | \$950/Mo. |
| + Suite 15 | 1,200 SF | \$1,200/Mo. |

Individual Office's

| | | |
|-------------|-------------|-----------|
| + Suite 14B | 640 SF | \$700/Mo. |
| + Suite 14D | Single Room | \$350/Mo. |

Building Features

- + Ample parking
- + Close to amenities
- + Easy access to 86th & Hickman
- + Available connectivity up to 1GBPS

Lease Information

- + Gross Rent quoted "As-is"
- + Utilities included

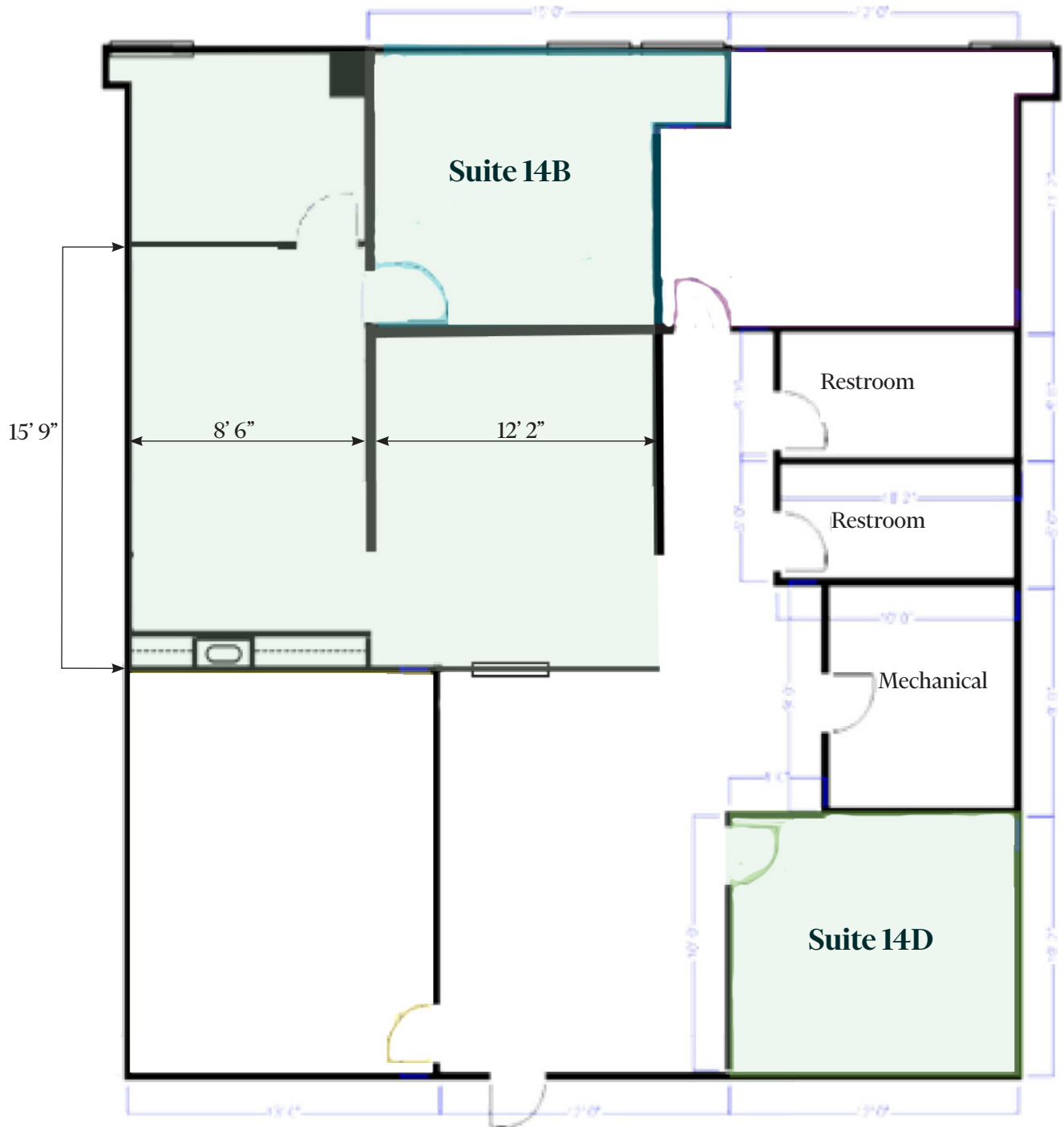
Three Months Free (3 Year Term Minimum)



Floor Plan - Suite 14

+ Suite 14B 640 SF \$700/Mo.

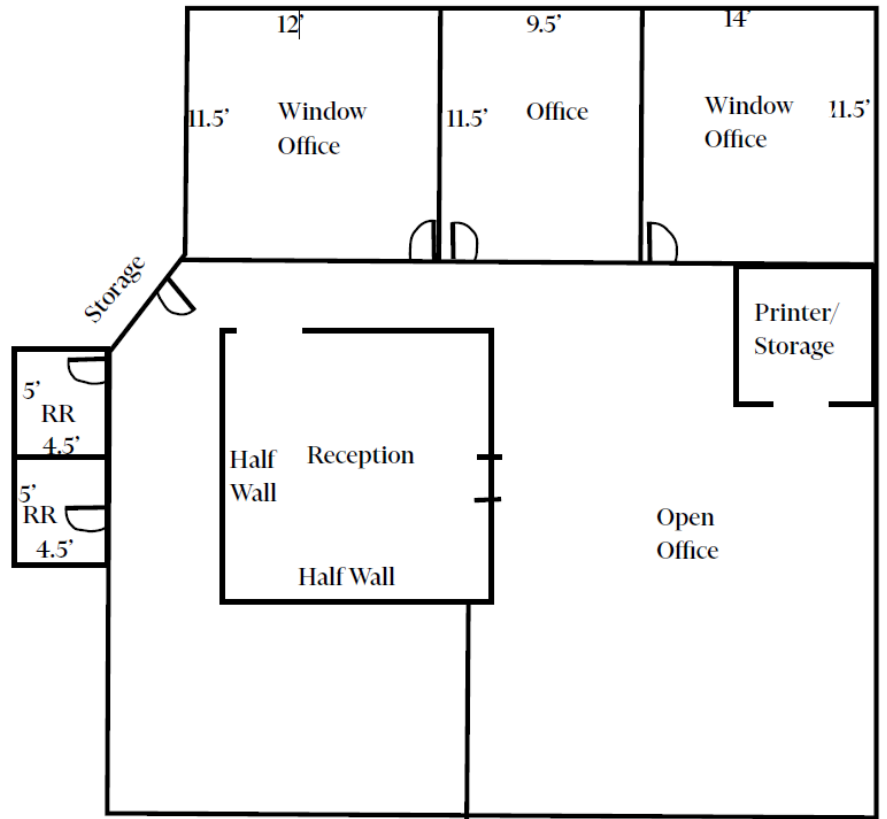
+ Suite 14D Single Room \$350/Mo.



Floor Plan - Suite 1B

+ 1,550 SF

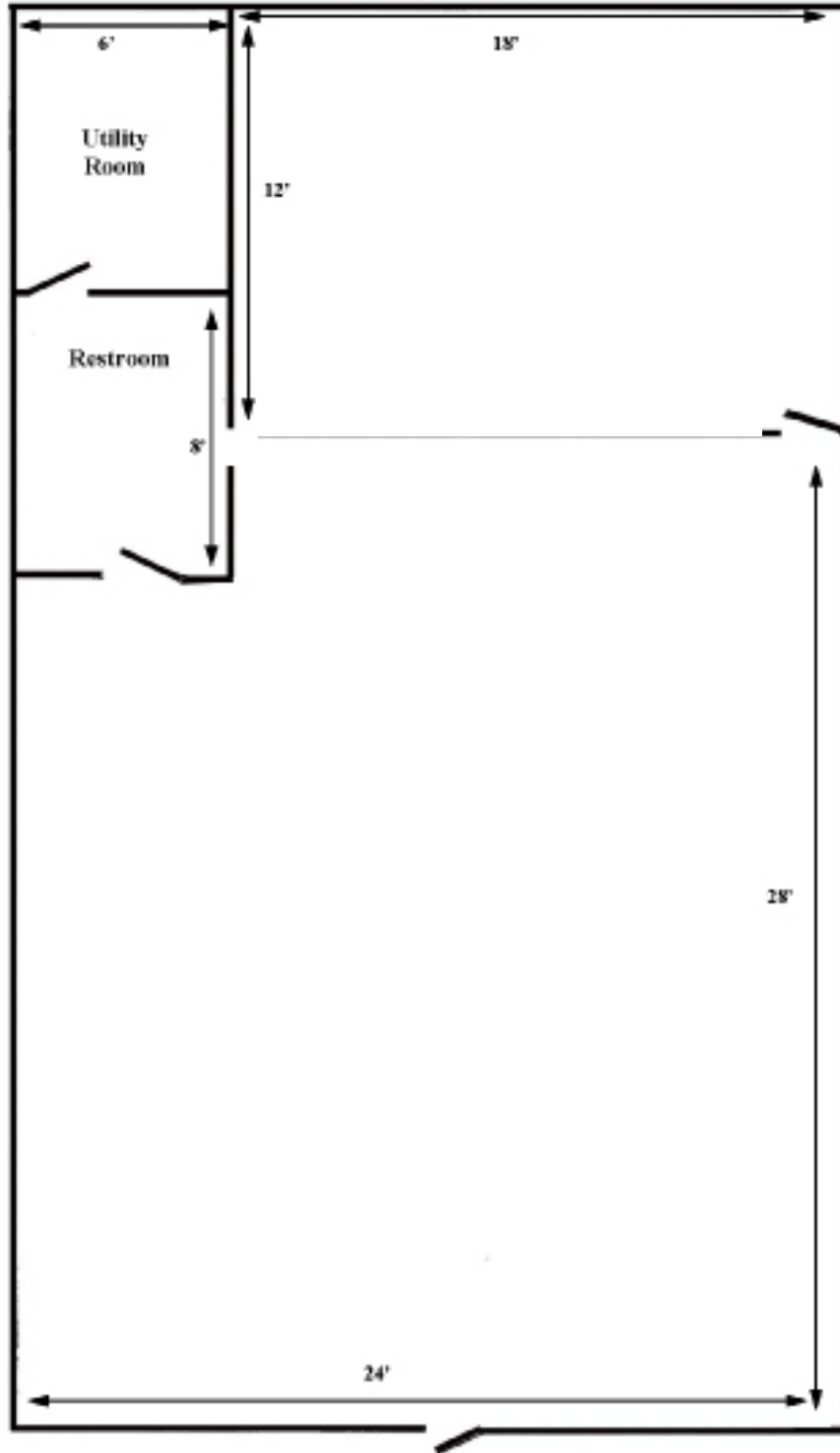
+ \$2,000/Mo.



Floor Plan - Suite 1D

+ 1,100 SF

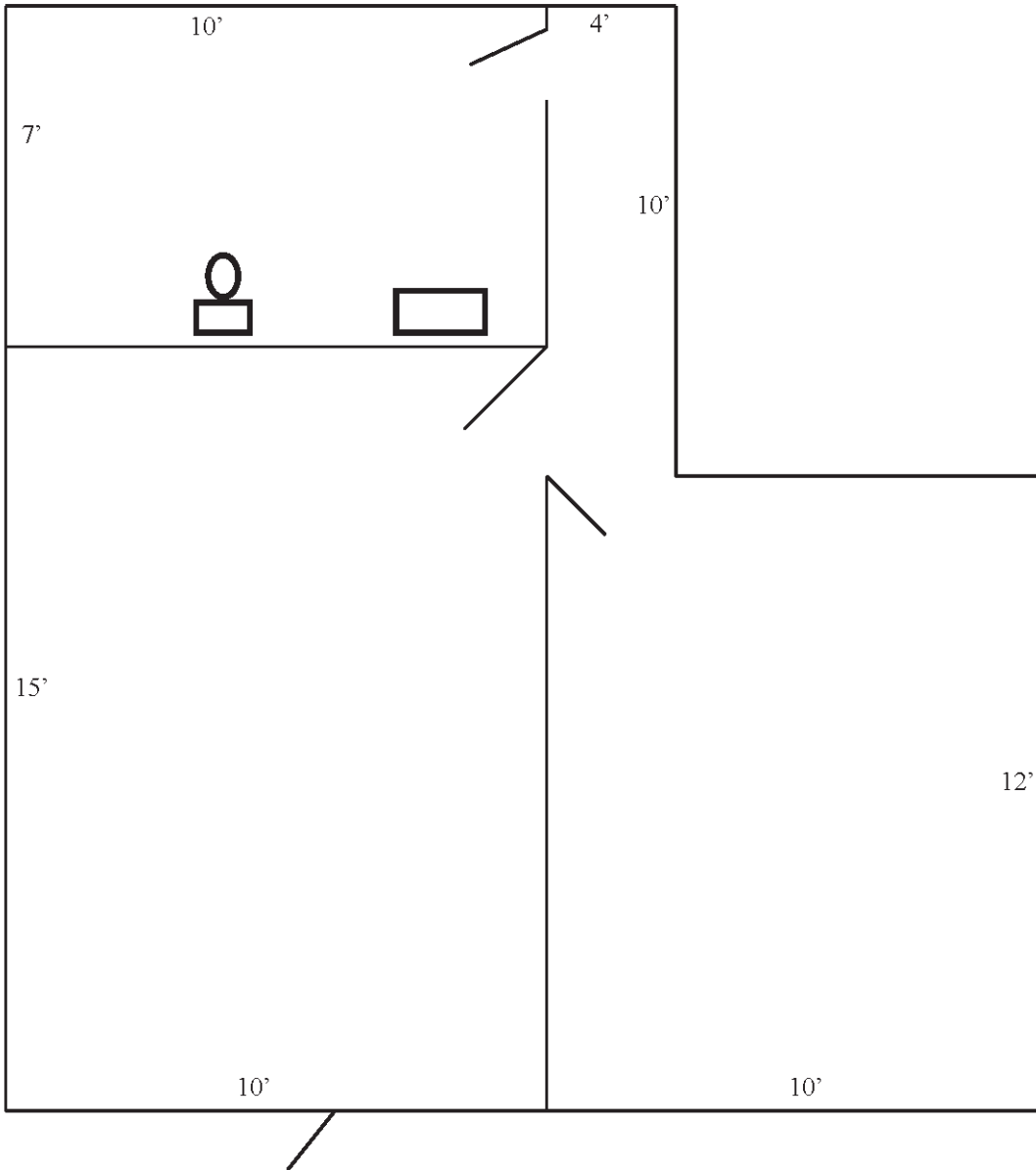
+ \$1,050/Mo.



Floor Plan - Suite 6A

+ 380 SF

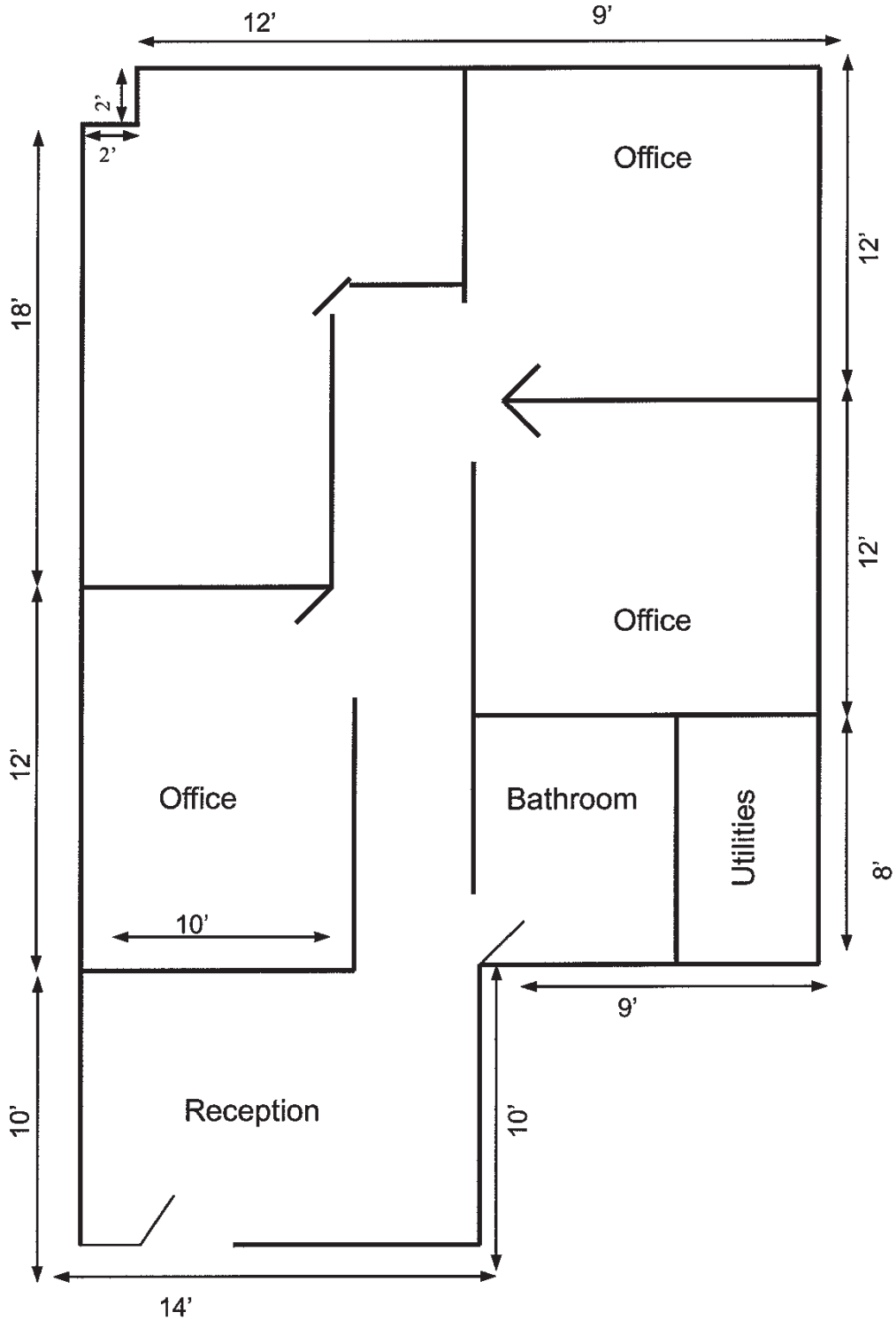
+ \$600/Mo.



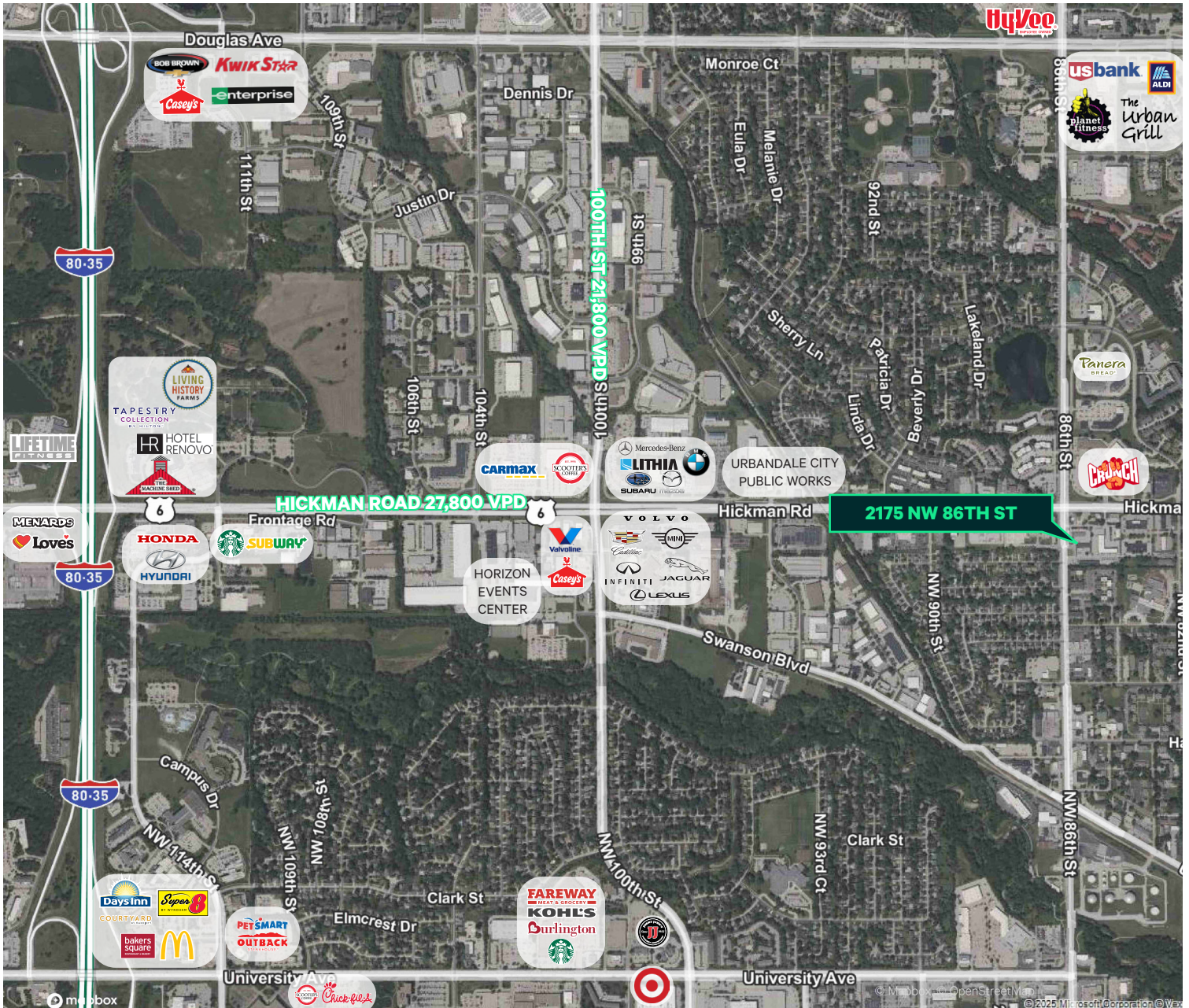
Floor Plan - Suite 11

+ 770 SF

+ \$950/Mo.



Location



Contact Us

Harrison Kruse, SIOR, CCIM
First Vice President
+1 515 556 9168
harrison.kruse@cbre.com
Licensed in the State of Iowa.

Drew Rosonke
Senior Associate
+1 515 612 5494
drew.rosonke@cbre.com
Licensed in the State of Iowa.

© 2026 CBRE, Inc. All rights reserved. This information has been obtained from sources believed reliable, but has not been verified for accuracy or completeness. You should conduct a careful, independent investigation of the property and verify all information. Any reliance on this information is solely at your own risk. CBRE and the CBRE logo are service marks of CBRE, Inc. All other marks displayed on this document are the property of their respective owners, and the use of such logos does not imply any affiliation with or endorsement of CBRE. Photos herein are the property of their respective owners. Use of these images without the express written consent of the owner is prohibited.