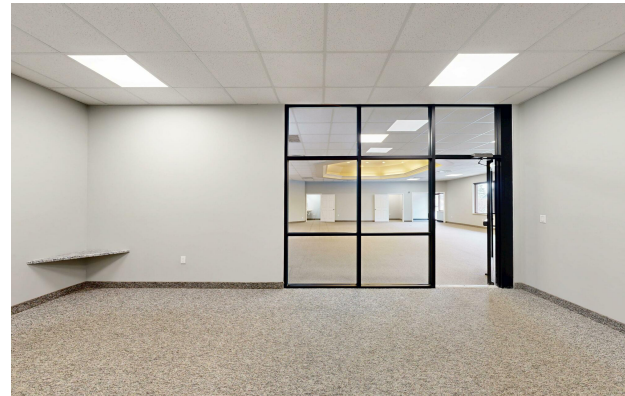


FOR LEASE

2,303± SF MIXED-USE SPACE

Edgewood Place | 3123 W. 12th Street, Suite B | Erie, PA 16505



OFFERED AT:
\$14.00/SF/YR
+ CAM
+ UTILITIES

PROPERTY HIGHLIGHTS

- 2,303± SF Mixed-Use Space For Lease
- Mostly Open Floor Plan
- Spacious Office (11' x 20') Overlooking Open Area
- 1 - 2 Restrooms & Storage Rooms
- Mechanical Room With Washer Hook-Up
- Excellent Signage & Visibility
- 14,000 Average Daily Traffic Along W. 12th Street (PennDOT - 2024 Count Year)
- Abundant Parking In Private Lot
- Zoned MU-2 Corridor Mixed Use (Millcreek Township)
- Join Pearson Professional Center, Trilogy Wellness & More At Edgewood Place
- Up To 3,755± SF Available
- Offered At \$14.00/SF/YR + CAM + Utilities
- CAM Estimated At \$4.03/SF/YR Based On 2025
- Tenant Pays Approximately \$3,460/Month (Base Rent + CAM) + Utilities
- Tour Online:
<https://my.matterport.com/show/?m=Y7xihQJSJfh4>

©2026 SBRE - Sherry Bauer Real Estate. The information above has been obtained from sources believed reliable. While we do not doubt its accuracy, we have not verified it and make no guarantee, warranty or representation about it. It is your responsibility to independently confirm its accuracy and completeness.

FOR MORE INFORMATION PLEASE CONTACT

Sherry Bauer
Broker

O. 814.453.2000 x101 | C. 814.460.2000
sbauer@sherrybauerrealestate.com

SBRE

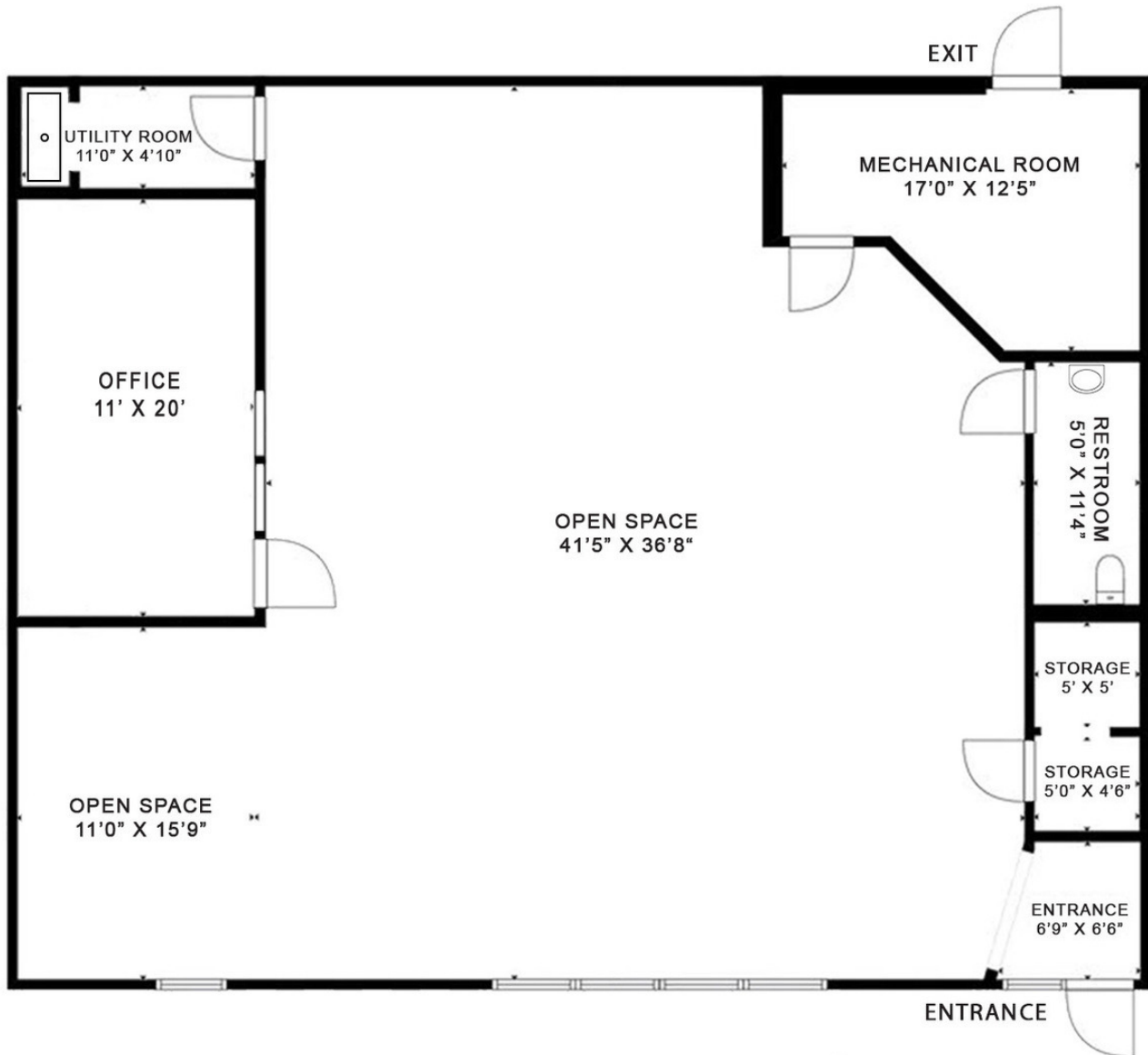
2,303± SF MIXED-USE SPACE

For Lease | 3123 W. 12th Street, Suite B | Erie, PA 16505

360° VIRTUAL TOUR

Floor Plan - Suite B

Edgewood Plaza | 3213 West 12th St. | Erie, PA



2,303± SF Gross Rentable Area

Note: Drawing may not be to scale.
All sizes & dimensions are approximate.

©2026 SBRE - Sherry Bauer Real Estate. The information above has been obtained from sources believed reliable. While we do not doubt its accuracy, we have not verified it and make no guarantee, warranty or representation about it. It is your responsibility to independently confirm its accuracy and completeness. Plan Data: ©2021 Matterport.

FOR MORE INFORMATION PLEASE CONTACT

Sherry Bauer

Broker

O. 814.453.2000 x101 \ C. 814.460.2000

sbauer@sherrybauerrealestate.com

1315 Peninsula Drive, Suite 2, Erie, PA 16505

P. 814.453.2000

F. 814.453.2001

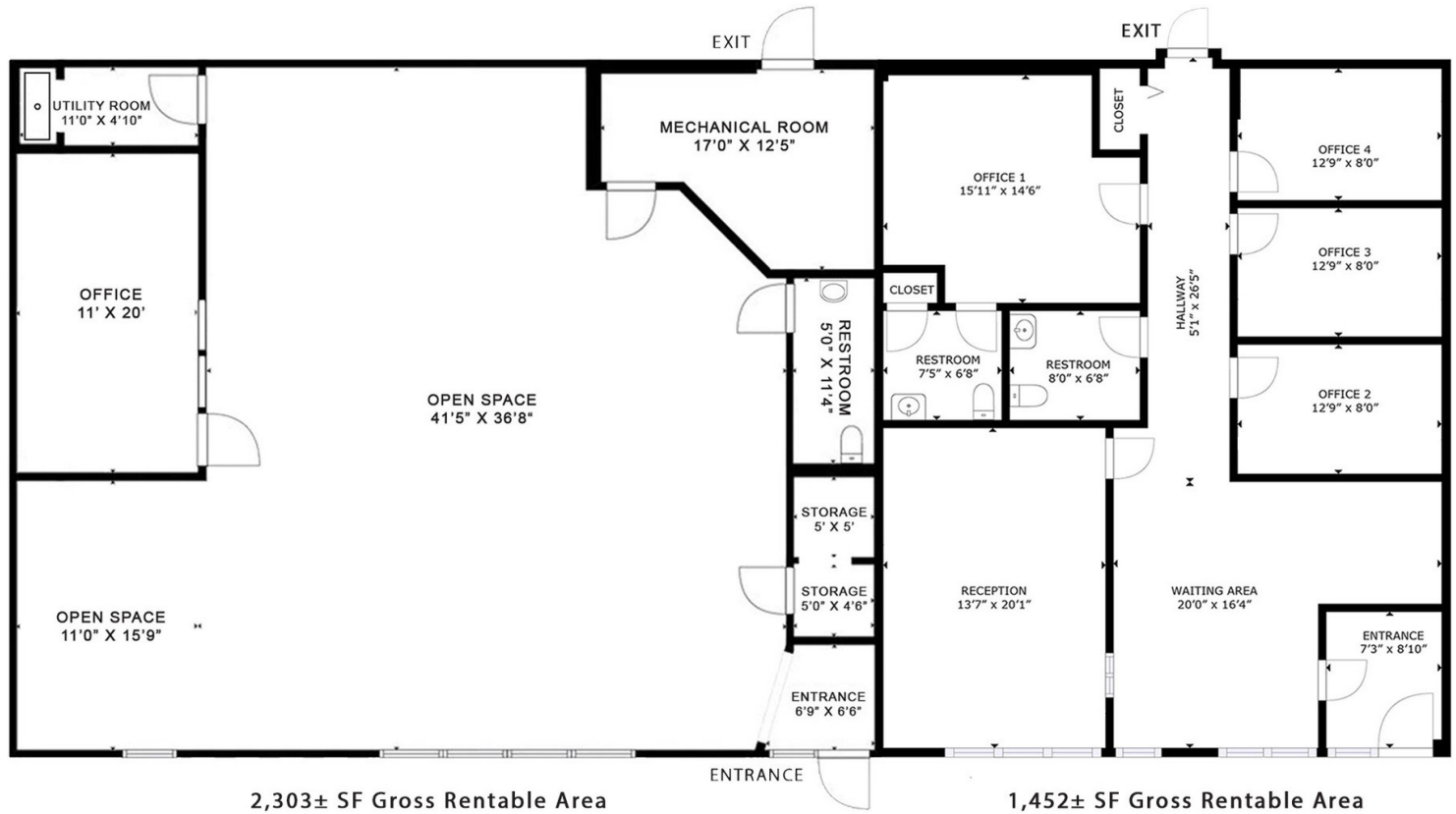
www.sherrybauerrealestate.com

UP TO 3,755± SF MIXED-USE SPACE

For Lease | 3123 W. 12th Street, Suite B & C | Erie, PA 16505

Floor Plan - Suite B & C

Edgewood Plaza | 3213 West 12th St. | Erie, PA



3,755± SF Combined Gross Rentable Area

Note: Drawing may not be to scale.

All sizes & dimensions are approximate.

©2026 SBRE - Sherry Bauer Real Estate. The information above has been obtained from sources believed reliable. While we do not doubt its accuracy, we have not verified it and make no guarantee, warranty or representation about it. It is your responsibility to independently confirm its accuracy and completeness. Suite B Plan Data: ©2021 Matterport, Suite C Plan Data: ©2024 Matterport.

FOR MORE INFORMATION PLEASE CONTACT

Sherry Bauer

Broker

O. 814.453.2000 x101 \ C. 814.460.2000

sbauer@sherrybauerrealestate.com

1315 Peninsula Drive, Suite 2, Erie, PA 16505

P. 814.453.2000

F. 814.453.2001

www.sherrybauerrealestate.com