



Chesapeake Station

7863–7955 BAYSIDE ROAD, CHESAPEAKE BEACH, MD 20732

OVERVIEW

Situated near the shores of the Chesapeake Bay, the Chesapeake Station shopping center serves the small community of around 100 single family homes and townhomes.

SPACE AVAILABLE

2,000 – 2,440 sq. ft.

CENTER TYPE

Neighborhood

GROSS LEASABLE AREA

42,130 sq. ft.

COUNTY

Calvert

TRAFFIC COUNT

Bayside Road – 14,511 VPD

CURRENT RETAILERS



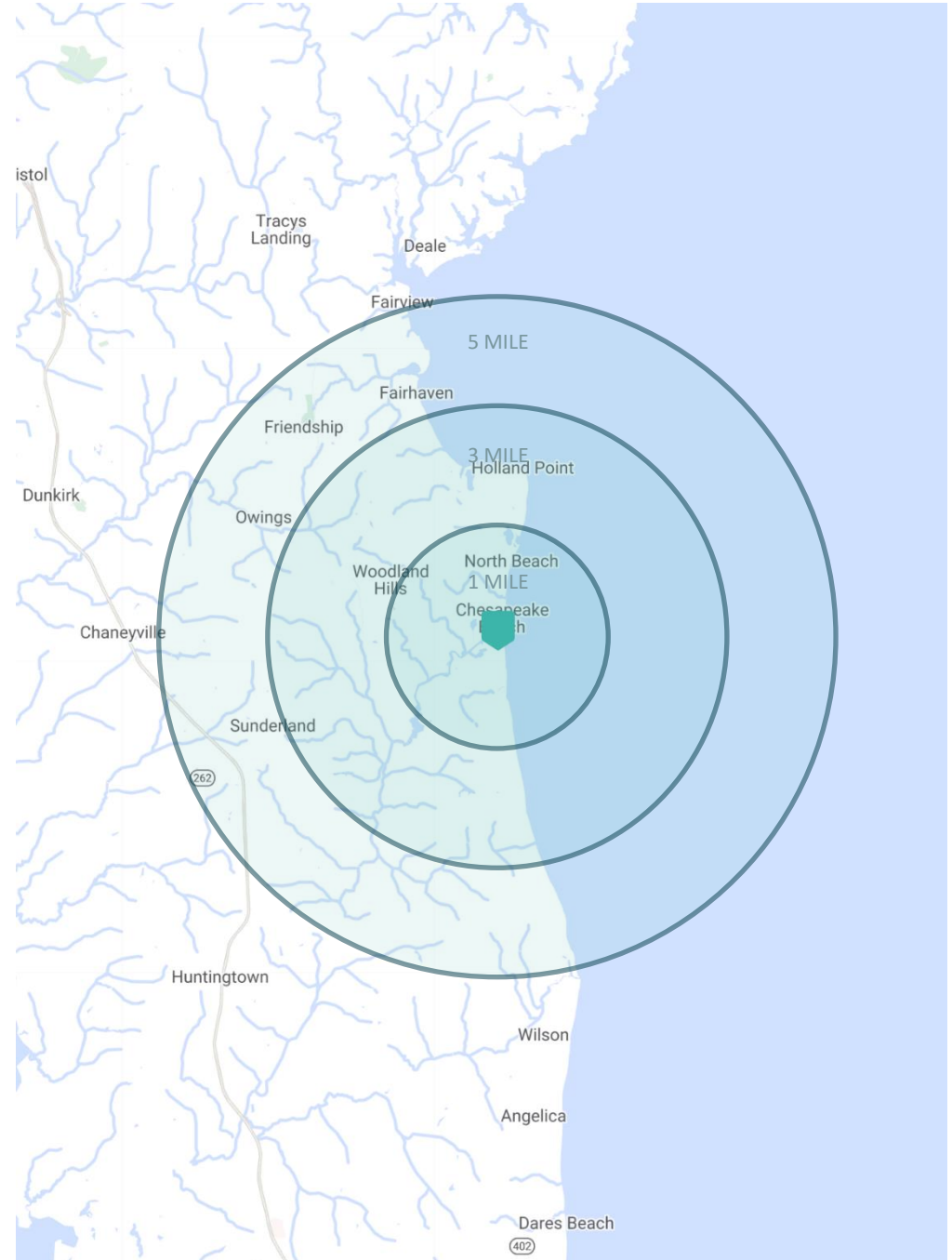
CHESAPEAKE STATION

7863–7955 BAYSIDE ROAD, CHESAPEAKE BEACH, MD 20732

CONTACT US

301.657.7330
leasing@willardretail.com
willardretail.com





DEMOGRAPHICS

1, 3, 5-MILE RADIUS



RADIUS



HH INCOME



MEDIAN AGE



HOUSEHOLDS



POPULATION

RADIUS	HH INCOME	MEDIAN AGE	HOUSEHOLDS	POPULATION
1 Mile	\$109,784	38.0	1,752	4,378
3 Mile	\$121,875	39.0	6,149	16,251
5 Mile	\$134,011	41.4	9,115	25,051

CHESAPEAKE STATION

7863-7955 BAYSIDE ROAD, CHESAPEAKE BEACH, MD 20732

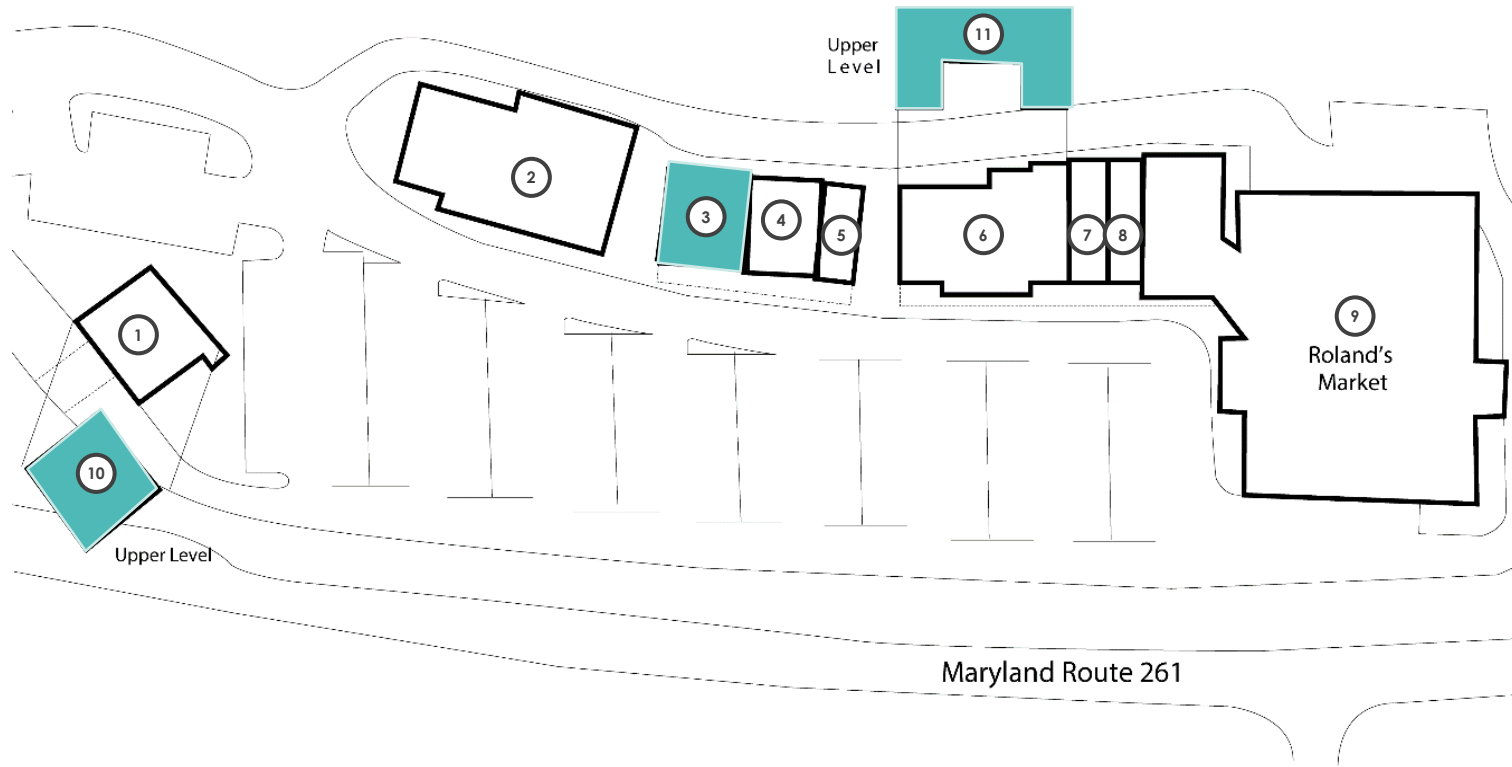
CONTACT US

301.657.7330
 leasing@willardretail.com
 willardretail.com



CHESAPEAKE STATION

SITE PLAN



TENANTS					
1	PNC BANK	2,362 SF	7	DOMINO'S	1,314 SF
2	CVS	6,646 SF	8	LITTLE PANDA	1,314 SF
3	AVAILABLE	2,000 SF	9	ROLAND'S SUPERMARKET	16,675 SF
4	MCDONALD'S	2,000 SF	UPPER LEVEL		
5	SUBWAY	1,000 SF	10	AVAILABLE	2,440 SF
6	POST OFFICE	4,555 SF	11	AVAILABLE	1,974 SF

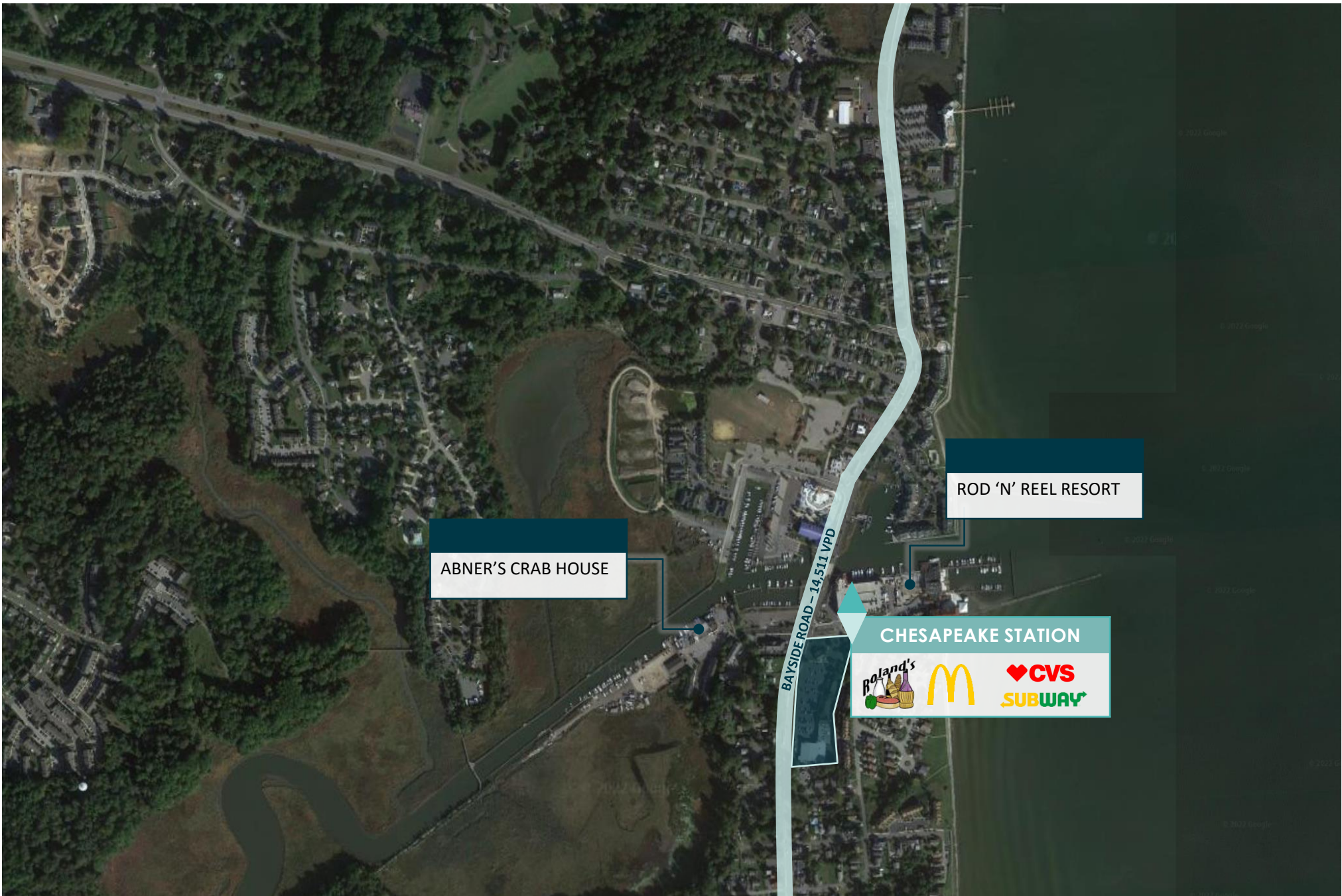
CHESAPEAKE STATION

7863-7955 BAYSIDE ROAD, CHESAPEAKE BEACH, MD 20732

CONTACT US

301.657.7330
 leasing@willardretail.com
 willardretail.com





CHESAPEAKE STATION

7863-7955 BAYSIDE ROAD, CHESAPEAKE BEACH, MD 20732

CONTACT US

301.657.7330
leasing@willardretail.com
willardretail.com





WILLARD

WILLARDRETAIL.COM

4800 Hampden Lane | Suite 800 | Bethesda, MD 20814

301.657.7330