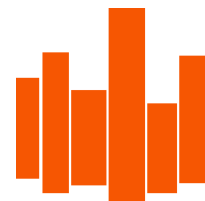


# The Troy Centre: Office Space For Lease

2095 West 6<sup>th</sup> Ave., Ste. 206 - 209 Broomfield, CO



## Property Highlights

- Central Broomfield location
- 2 common conference rooms available
- Open spacious restrooms w/ showers on both levels
- On site management
- Just west of Hwy. 287, easy access
- Easy access to Hwy. 36, Hwy 287 and NW Parkway
- 30 minute drive to DIA via NW Parkway

## Lease Details:

**Lease Rate: Negotiable, modified gross**

**\*Ste. 206 - 209: 7,873 RSF**

Excellent western views with 24 offices with 15 offices on the window line. Reception area, interior conference room, kitchenette & storage rooms. Excellent western views, central Broomfield location with easy access to the Hwy. 36 corridor.

*Exclusively represented by Vista Commercial Advisors: Chip McReynolds  
303-974-7600 ext. 2 or [mcreynolds@vistacommercial.com](mailto:mcreynolds@vistacommercial.com)*

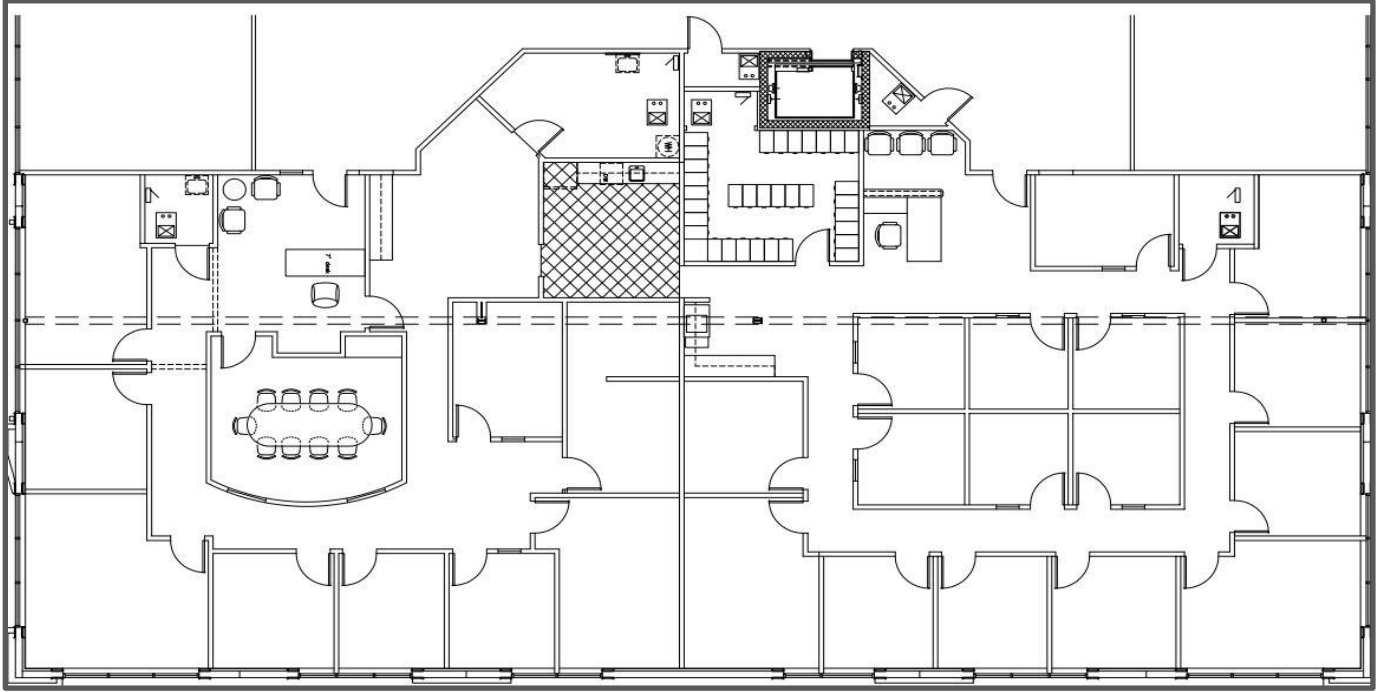


**VISTA COMMERCIAL ADVISORS INC.**

[www.vistacommercial.com](http://www.vistacommercial.com) • 520 Courtney Way, Suite 100, Lafayette, Colorado 80026 • 303-974-7600

*Commercial Real Estate Advisory Services*

**Suite 206-209 7,873 RSF**



**VISTA COMMERCIAL ADVISORS INC.**

www.vistacommercial.com • 520 Courtney Way, Suite 100, Lafayette, Colorado 80026 • 303-974-7600

*Commercial Real Estate Advisory Services*