

# Westport Office Spaces Available For Lease

1850 CRAIGSHIRE ROAD  
MARYLAND HEIGHTS, MO 63146



**NEWMARK**  
ZIMMER

1850 CRAIGSHIRE ROAD, MARYLAND HEIGHTS, MO 63146

### Building Summary

61,374 SF, three-story, Class B office building

### Available Suites

Suite 100- 5,579 SF

Suite 203- 5,826 SF

Suite 207- 2,262 SF

Suite 304- 5,507 SF

### Parking

Ratio: 4/1,000 SF

Covered parking available

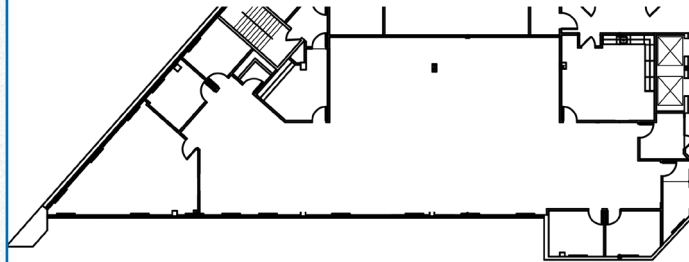
### Location

Located in Westport within close proximity to Hwy 270 and Page Avenue

### Lease Rate

\$18.50/SF, fs

Suite 100 - 5,579 SF



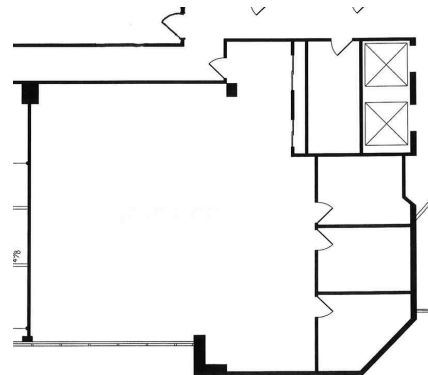
CLICK TO VIEW



Suite 203 - 5,826 SF



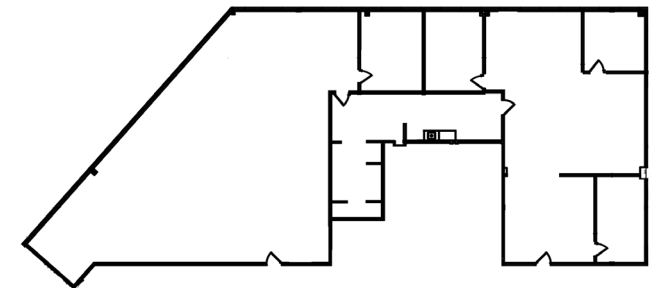
Suite 207 - 2,262 SF



CLICK TO VIEW



Suite 304 - 5,507 SF



CLICK TO VIEW





FOR FURTHER INFORMATION, PLEASE CONTACT:

**Jay Travis**

*Director*

t 314-628-0442

[jtravis@nzimmer.com](mailto:jtravis@nzimmer.com)

**Ben Albers**

*Senior Managing Director*

t 314-628-0439

[balbers@nzimmer.com](mailto:balbers@nzimmer.com)

**Mike Carlson, SIOR, CCIM**

*Executive Managing Director, Principal*

t 314-628-0438

[mcarlson@nzimmer.com](mailto:mcarlson@nzimmer.com)

8235 Forsyth Boulevard, Suite 200  
St. Louis, MO 63105

[nmrkzimmer.com](http://nmrkzimmer.com)

**NEWMARK**  
ZIMMER