

# FOR LEASE

## *2,040± Sq. Ft. Industrial Office Space*



***10 N. East Street, Suite 103 • Woodland, CA***

2 Private Offices with Reception Area

Warehouse with 10 x 10 Roll-up Door

13' Clear Height in Warehouse

Restroom

Great Location

Easy Access to I-5 & Hwy 113

Security Cameras on Premises

Includes Water, Sewer & Garbage

**Lease Rate: \$2,300.00/Month**

**SALLING PROPERTIES INC.**

DRE No. 02201437

REAL ESTATE SALES, LEASING & PROPERTY MANAGEMENT

20 N. East Street, Suite 101, Woodland, CA 95776

Phone: (530) 666-5485 Website: [www.Sheffield-RealEstate.com](http://www.Sheffield-RealEstate.com)

E-Mail: [sallingproperties@kathysallingrealtor.com](mailto:sallingproperties@kathysallingrealtor.com)

The information contained herein has been obtained from sources we deem reliable. We cannot, however, assume responsibility for its accuracy.

Listing Agent: **Bryan Sheffield, Agent**  
CalBRE: **02065645**  
Phone: **(530) 219-0281**  
E-Mail: **bsheffield100@gmail.com**

# 2,040± Sq. Ft. Office w/ Warehouse

## 10 N East St. Suite 103 • Woodland, CA



## SALLING PROPERTIES INC.

DRE No. 02201437

REAL ESTATE SALES, LEASING & PROPERTY MANAGEMENT

20 N. East Street, Suite 101, Woodland, CA 95776

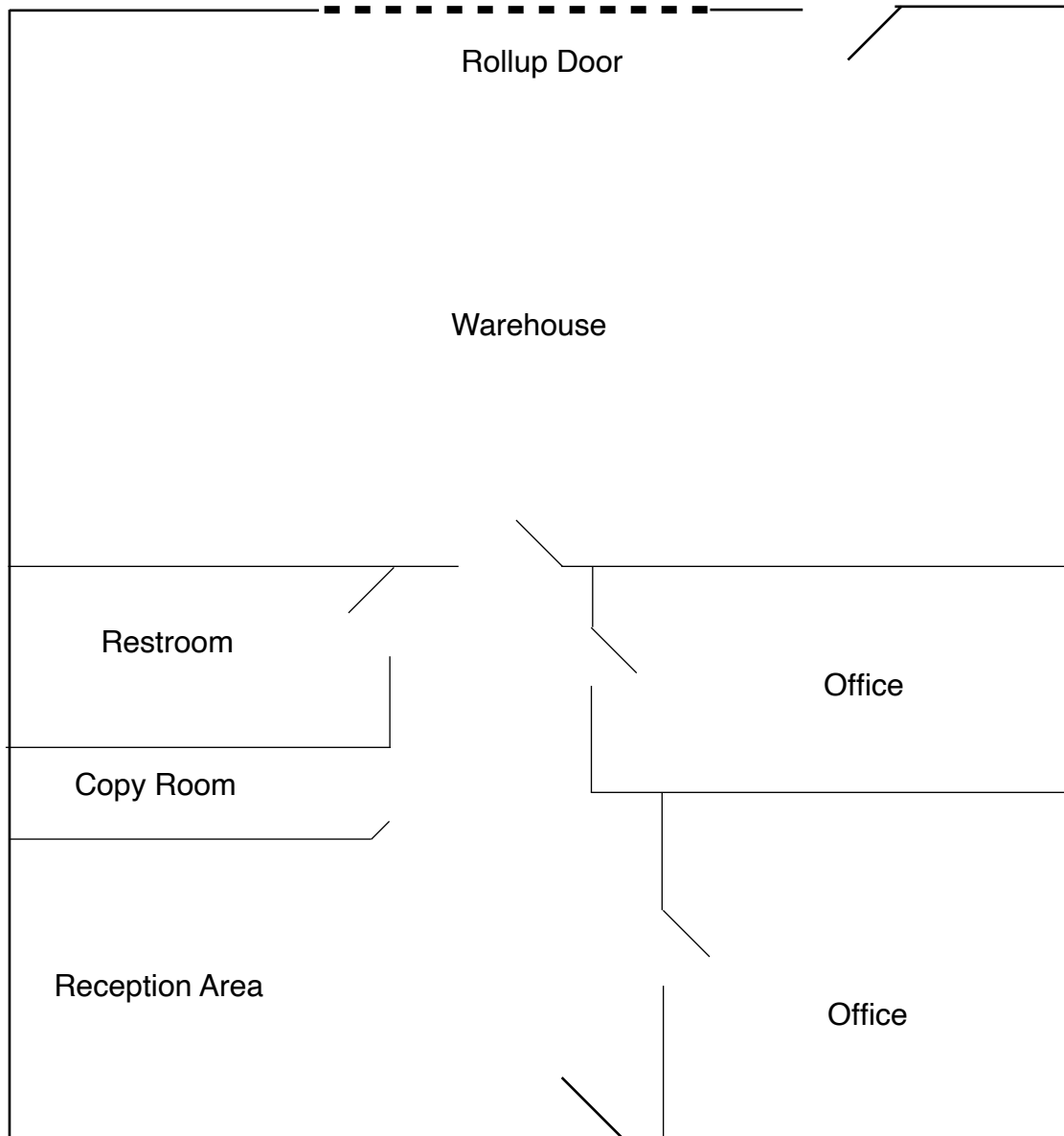
Phone: (530) 666-5485 Website: [www.Sheffield-RealEstate.com](http://www.Sheffield-RealEstate.com)

E-Mail: [sallingproperties@kathysallingrealtor.com](mailto:sallingproperties@kathysallingrealtor.com)

The information contained herein has been obtained from sources we deem reliable. We cannot, however, assume responsibility for its accuracy.

Listing Agent: **Bryan Sheffield, Agent**  
CalBRE: **02065645**  
Phone: **(530) 219-0281**  
E-Mail: **[bsheffield100@gmail.com](mailto:bsheffield100@gmail.com)**

***2,040± Sq. Ft. Office w/ Warehouse  
10 N East St. Suite 103 • Woodland, CA***



\*Drawing Not To Scale

**SALLING PROPERTIES INC.**

DRE No. 02201437

REAL ESTATE SALES, LEASING & PROPERTY MANAGEMENT

20 N. East Street, Suite 101, Woodland, CA 95776

Phone: (530) 666-5485 Website: [www.Sheffield-RealEstate.com](http://www.Sheffield-RealEstate.com)

E-Mail: [sallingproperties@kathysallingrealtor.com](mailto:sallingproperties@kathysallingrealtor.com)

The information contained herein has been obtained from sources we deem reliable. We cannot, however, assume responsibility for its accuracy.

Listing Agent: **Bryan Sheffield, Agent**  
CalBRE: **02065645**  
Phone: **(530) 219-0281**  
E-Mail: **[bsheffield100@gmail.com](mailto:bsheffield100@gmail.com)**