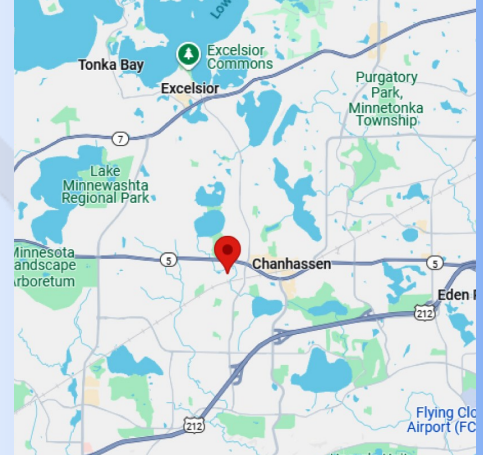


FOR LEASE

CHANHASSEN LAKES I
1363 Park Road, Suites B-C
Chanhassen, MN 55317

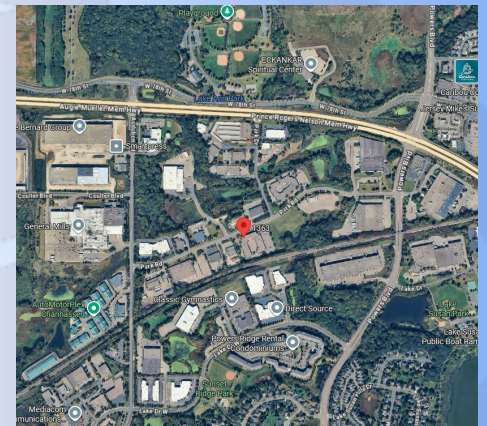


SUMMERHILL
Commercial Real Estate, LLC



LEASE DETAILS:

1363 Park Rd., Suites A-C: (Both Contiguous Spaces)	<u>2,882 SF Office (Demo to Warehouse to Suit)</u> <u>2,155 SF Warehouse</u> 5,037 SF Total (Divisible) (1) Drive-in Door, 100% A/C, 14.5' clear ht.
1363 Park Road, Suite B:	<u>1,239 SF Office (Common Area Entry/Restroom/Hallway).</u> <u>2,155 SF Warehouse</u> 3,394 SF Total (Expandable), (1) Drive In door, 100% A/C.
1363 Park Road, Suite C:	<u>1,643 SF Office/Flex/Warehouse</u> <u>1,643 SF SF Total (Expandable)</u> 4'-6' wide door can be added for direct access in front.
Rental Rates/Est. Tax & CAM (2026)*:	\$12.00 PSF Office \$7.00 PSF Warehouse \$3.99 PSF (\$2.17 PSF CAM, \$1.82 PSF RE Taxes)



**All information in this brochure is deemed reliable, but not guaranteed.*

FEATURES:

- Great office/warehouse/flex space available in Chanhassen Lakes I.
- Flexible space options of 1,643 sf/3,394 sf/5,037 sf, and more.
- Option to demo office into warehouse to suit for term type deal.
- (1) 8' x 10' drive in door. 14.5' clear height. 100% A/C.
- Extensive and abundant floor to ceiling glass line. Clean warehouse space.
- Existing office has 9' ceilings, privates/open areas, break room, reception & conference room.
- Divided spaces have common access to entry area, hallway, and common restrooms.
- Located near downtown Chanhassen with many area amenities.
- Great highway access near Highway 212 and Highway 5.
- Locally owned and managed. Direct access to City of Chanhassen trail system.

* CAM includes HVAC maintenance, repair, and replacement.

CONTACT:

Patrick Lensing, CPM

plensing@summerhillcommercial.com
952-475-5121

Summerhill Commercial Real Estate

6495 City West Parkway
Eden Prairie, MN 55344

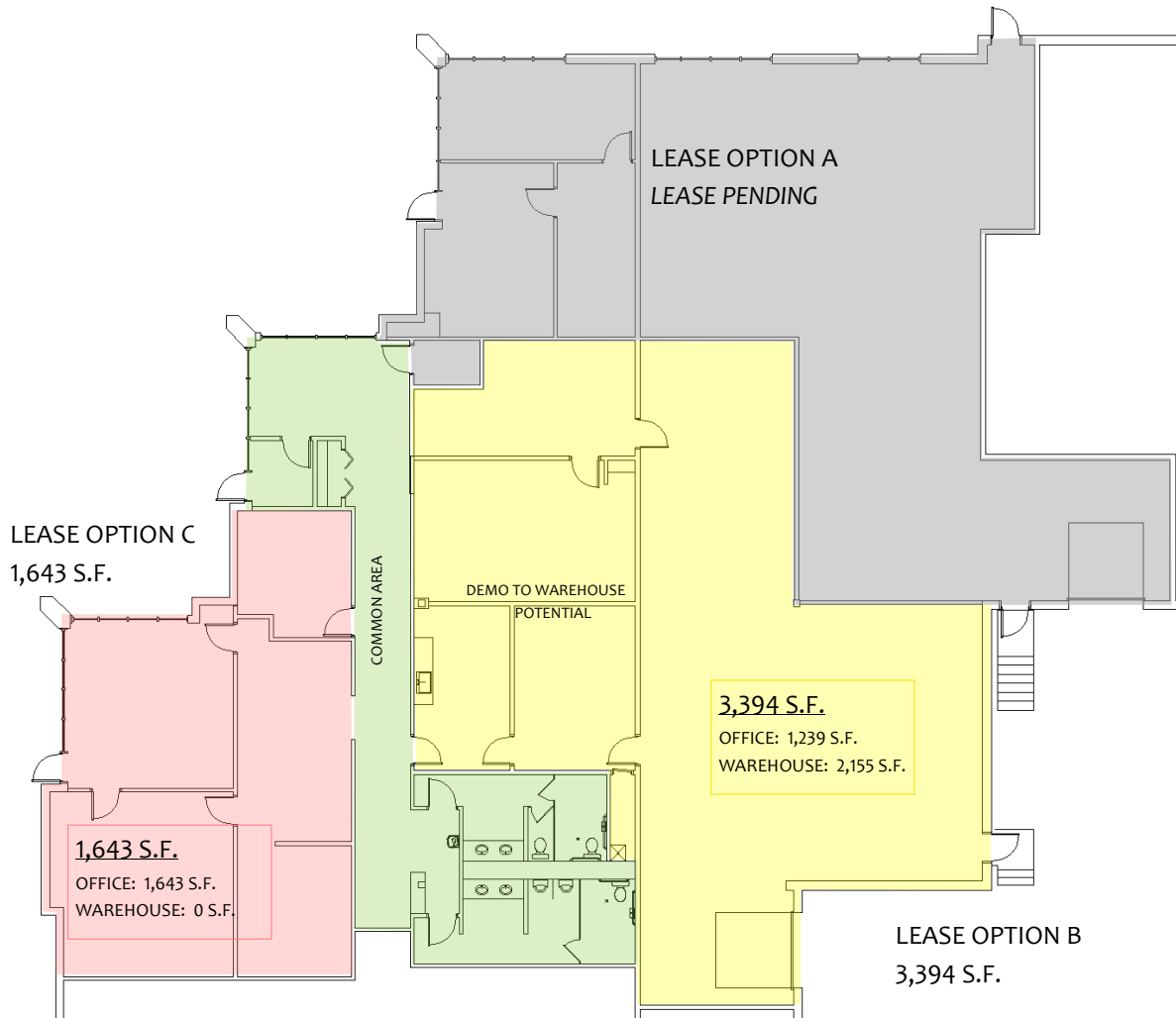
www.summerhillcommercial.com

FOR LEASE

CHANHASSEN LAKES I
1363 Park Road, Suites B-C
Chanhassen, MN 55317



SUMMERHILL
Commercial Real Estate, LLC



CONTACT: Patrick Lensing, CPM
plensing@summerhillcommercial.com
952-475-5121

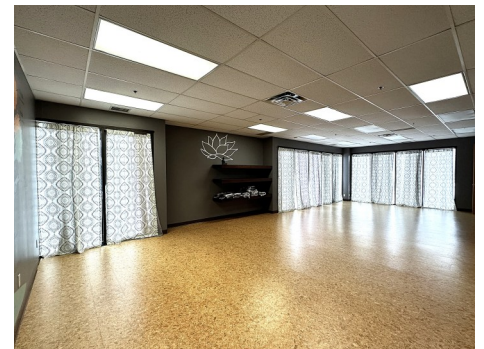
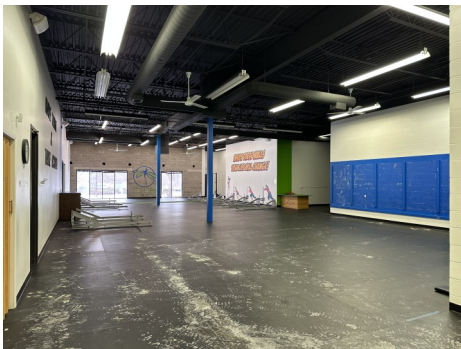
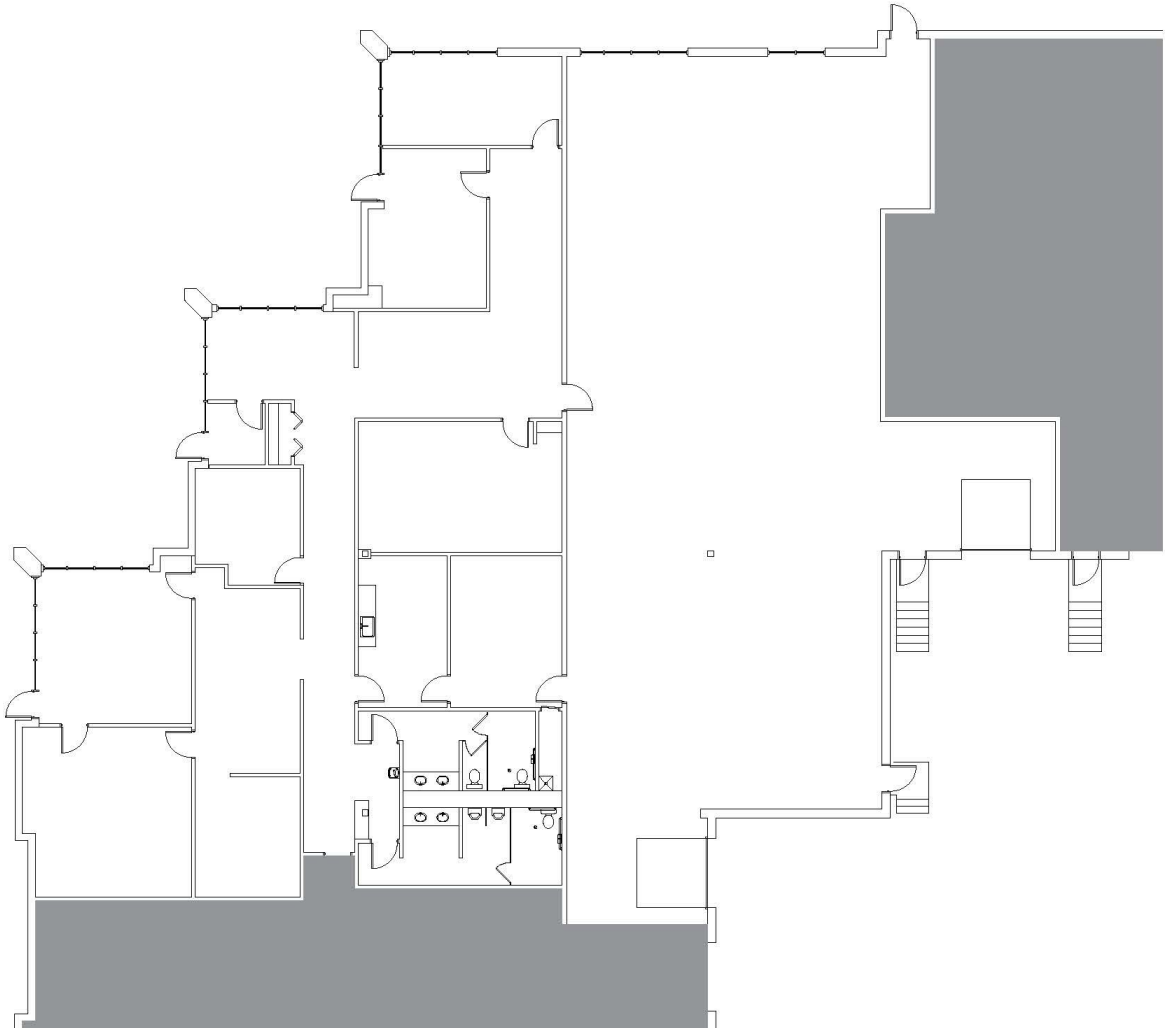
Summerhill Commercial Real Estate
6495 City West Parkway
Eden Prairie, MN 55344
www.summerhillcommercial.com

FOR LEASE

CHANHASSEN LAKES I
1363 Park Road, Suites B-C
Chanhassen, MN 55317



SUMMERHILL
Commercial Real Estate, LLC



CONTACT: Patrick Lensing, CPM
plensing@summerhillcommercial.com
952-475-5121

Summerhill Commercial Real Estate
6495 City West Parkway
Eden Prairie, MN 55344
www.summerhillcommercial.com