



FOR LEASE
±840 SF - ±1,920 SF

POWERS RIDGE OFFICE PARK

1827 Powers Ferry Rd SE

Office Space

Atlanta, GA

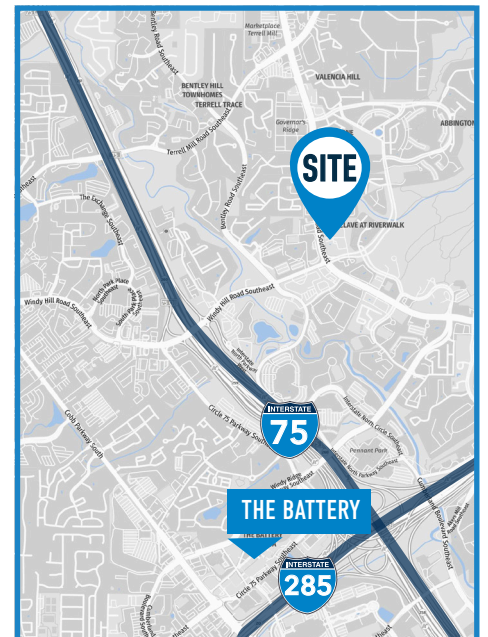
30339



OVERVIEW:

- » Located in Powers Ridge Office Park, which includes 25 buildings in a park-like setting
- » Multiple suites available
- » Single- or multi-tenant building totaling 5,760 SF on three floors
- » Each floor is ±1,920 SF with two restrooms and HVAC controls
- » Parking ratio: 4:1000
- » Beautifully landscaped
- » Easy access to Windy Hill Rd, I-75, and I-285
- » Less than one mile to I-75
- » Cumberland submarket
- » Minutes from retail, dining, and entertainment options like Truist Park and The Battery, Mellow Mushroom, Rose & Crown, and more

VIEW AVAILABLE SUITES

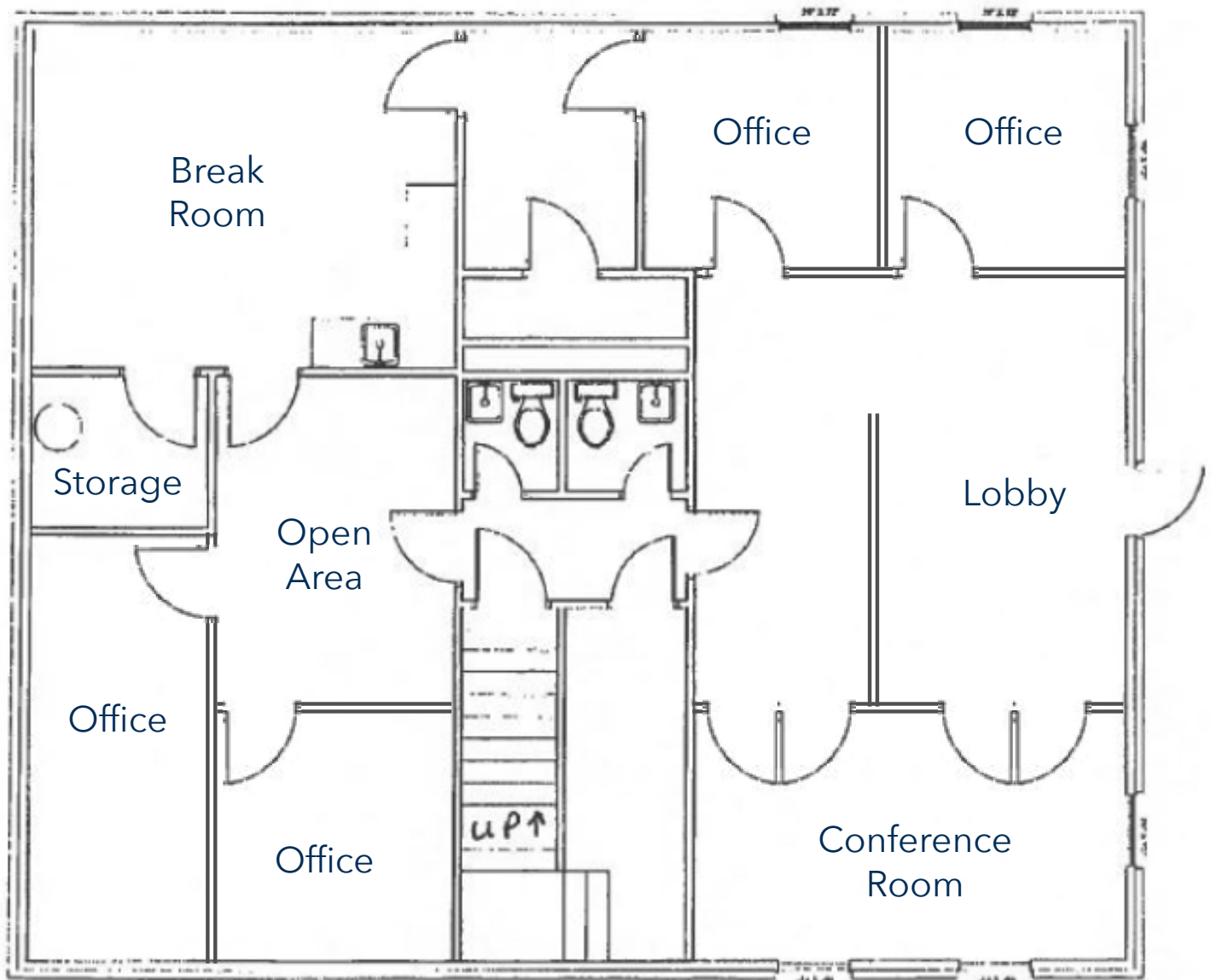


P.X. Head // 404.272.3408
pxhead@skcr.com

POWERS RIDGE OFFICE PARK

1827 Powers Ferry Rd SE

BUILDING 23 #100
1,920 SF



POWERS RIDGE OFFICE PARK

1827 Powers Ferry Rd SE

BUILDING 24 #350
1,180 SF

