

**FOR LEASE
EXECUTIVE OFFICE SUITES**



FEATURES:

- Executive Office Suites Available "FOR LEASE" in Plymouth, MN.
- 1 Large offices with windows.
- Additional work stations available for \$300 / month.
- Access to lounge area and restroom.

Gross Rate:
\$1,400 - \$1,500 per month

(Excludes Internet)

Overview 1
 Aerial Maps 2
 Floor Plans..... 3
 Site Plan. 4
 Photo Gallery 5
 City of Plymouth Info. ... 6



Chad Weeks
612.619.9911
cweeks@arrowcos.com



Jeff Penfield
612.325.2067
jpenfield@arrowcos.com

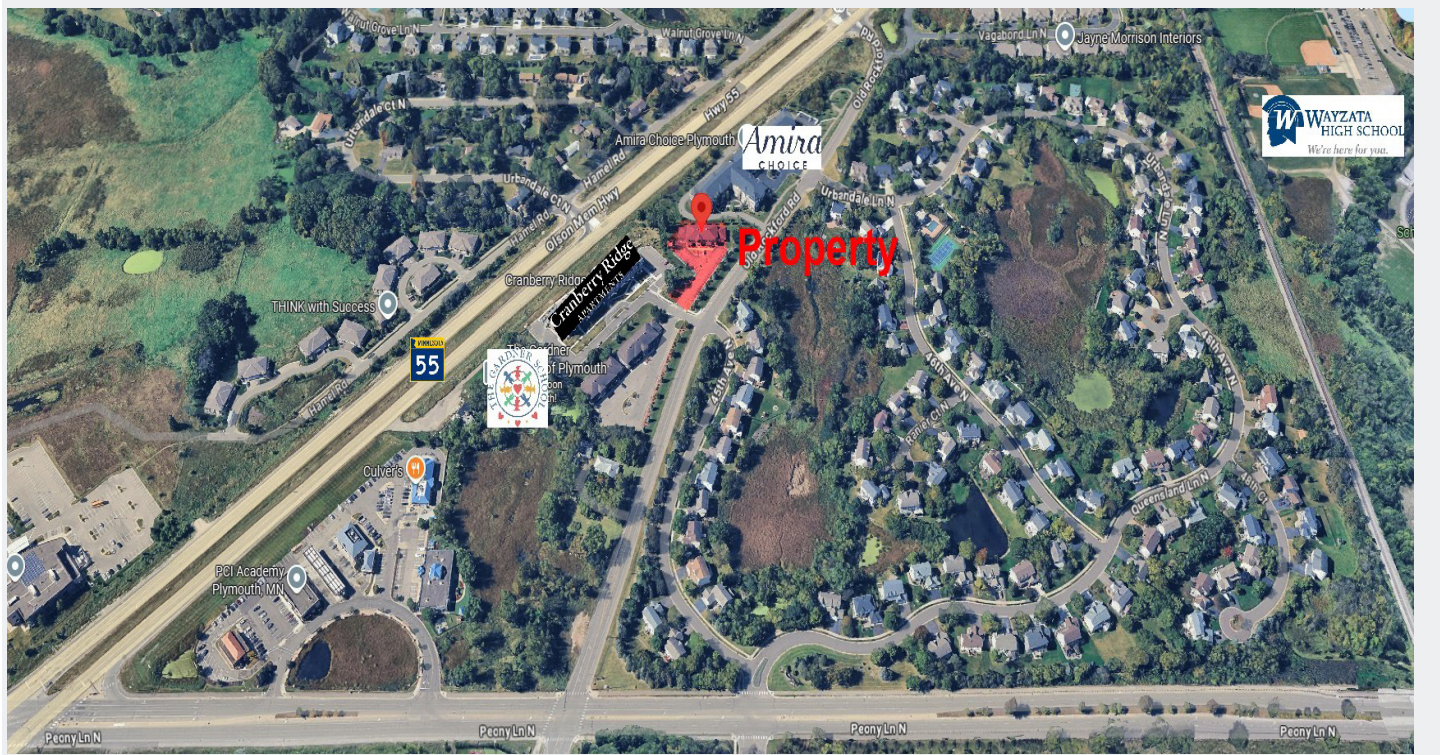
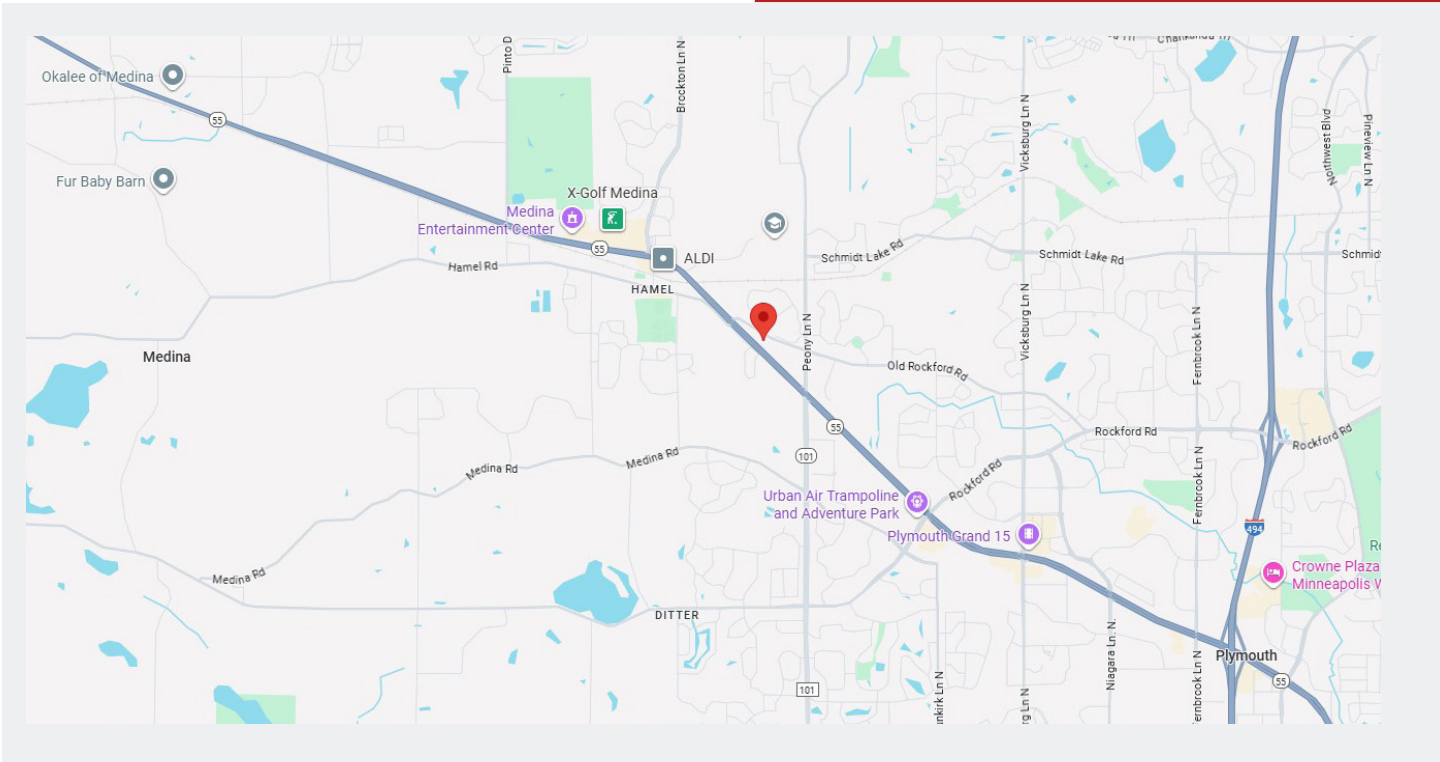
Contact

Phone: 763.424.6355
Fax: 763.424.7980

Arrow Companies
7365 Kirkwood Court N. Suite 335
Maple Grove, MN 55369

AERIAL & MAP

**FOR LEASE
EXECUTIVE OFFICE SUITES**



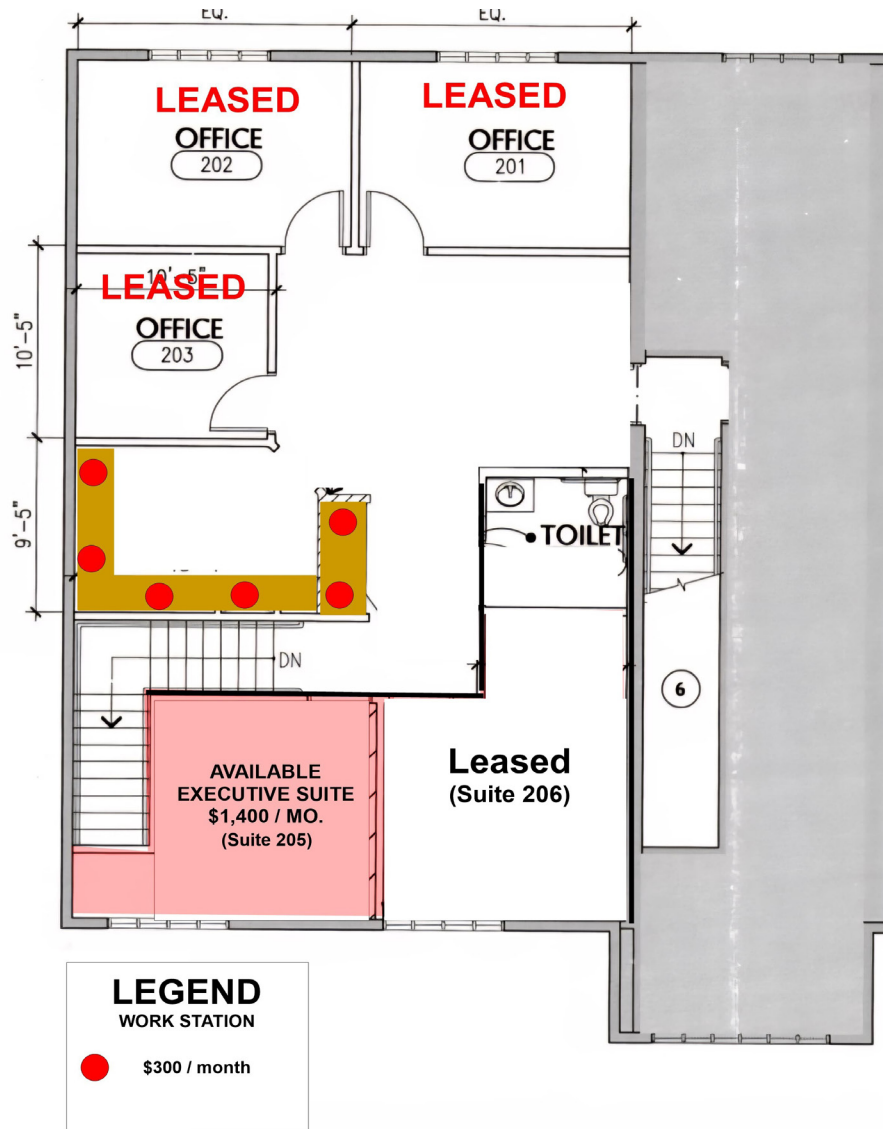
Contact
Phone: 763.424.6355
Fax: 763.424.7980

Arrow Companies
7365 Kirkwood Court N. Suite 335
Maple Grove, MN 55369

www.arrowcos.com

FLOOR PLAN

**FOR LEASE
EXECUTIVE OFFICE SUITES**



SITE PLAN

**FOR LEASE
EXECUTIVE OFFICE SUITES**



Contact

Phone: 763.424.6355

Fax: 763.424.7980

Arrow Companies

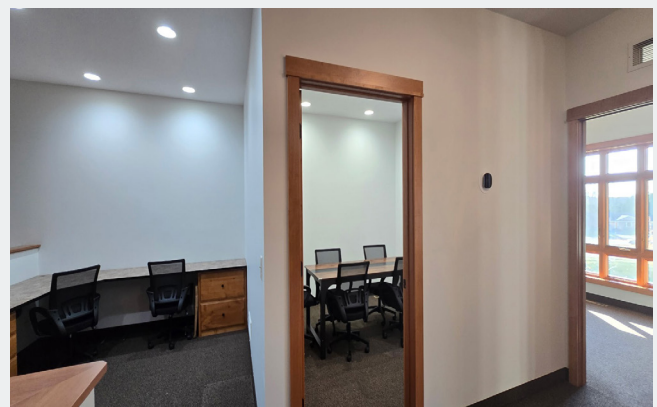
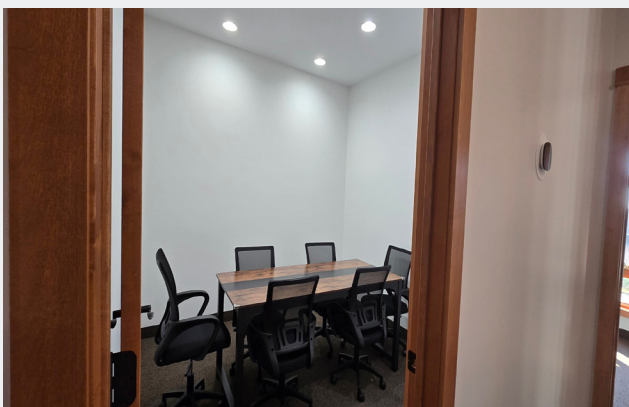
7365 Kirkwood Court N. Suite 335

Maple Grove, MN 55369

www.arrowcos.com

PHOTO GALLERY

**FOR LEASE
EXECUTIVE OFFICE SUITES**



Contact

Phone: 763.424.6355

Fax: 763.424.7980

Arrow Companies

7365 Kirkwood Court N. Suite 335

Maple Grove, MN 55369

www.arrowcos.com



Plymouth Office Plaza

18200 45th Ave. N., Unit C

Plymouth, MN 55446

CITY OF PLYMOUTH

FOR LEASE EXECUTIVE OFFICE SUITES

Plymouth is home to a vibrant business community. From small start up companies to major corporations, you will find them in Plymouth. Our diverse economic base includes nearly 50,000 jobs. Major industries include insurance, high tech research, medical devices and light manufacturing as well as printing and publishing.

Nationally recognized for its quality of life, Plymouth is located 12 miles northwest of Minneapolis. It offers:

Extensive trails and parks

Picturesque open spaces

Strong neighborhoods

Diverse recreation programs

Highly regarded school districts

A variety of local businesses

Nearby shopping and entertainment districts

Easy access to downtown Minneapolis and its wide array of cultural and sports venues.

Best Place to Live

Plymouth was named Money magazine's number one Best Place to Live in 2008 for cities with populations of 50,000 to 300,000. The city stayed in the top dozen when the magazine repeated the rankings in 2010.

Location, Location, Location

Many major highways run through or are close to Plymouth, making it readily accessible to all within the metropolitan area. Interstate 494 runs through Plymouth as does Hwy. 55. Hwy. 169 is on the city's eastern border and I-394 is within four miles from the center of Plymouth.



Contact

Phone: 763.424.6355

Fax: 763.424.7980

Arrow Companies

7365 Kirkwood Court N. Suite 335

Maple Grove, MN 55369

www.arrowcos.com