

# LEGACY CORPORATE CENTER

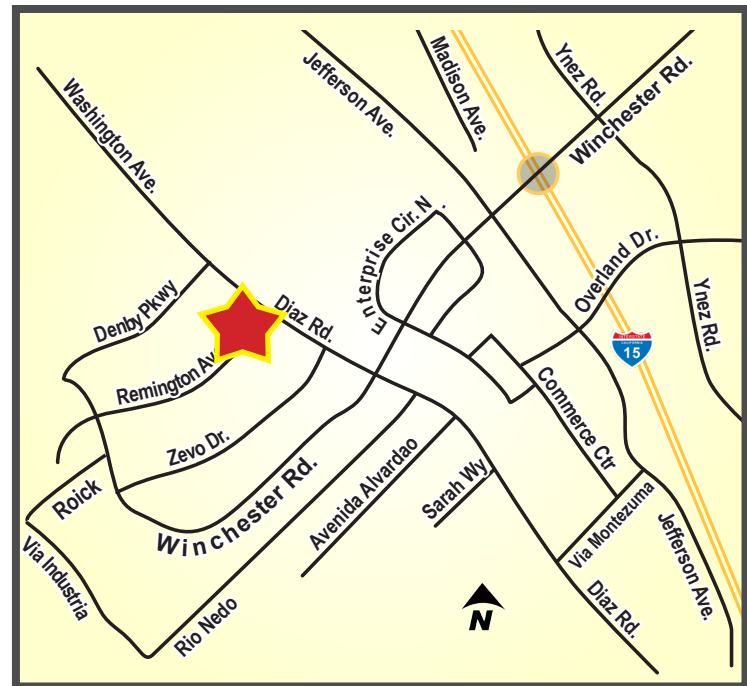
## OFFICE SUITES FOR LEASE

41951 REMINGTON AVENUE - TEMECULA, CA



### PROPERTY HIGHLIGHTS:

- 32,000 SF Class "A" Office Building
- 1,506 SF - 2,954 SF Suites Available
- Class A Building Standards
- Elevator Served
- Coffee Bars in Each Suite
- Flexible Lease Terms
- Lush Landscaping
- Easy Access to Interstate 15
- 4:1,000 SF Parking
- From \$1.59 PSF!



**JIM NADAL, ccim • 951.445.4520 • jnadal@leetemecula.com • DRE #01040679**

# LEGACY CORPORATE CENTER

## OFFICE SUITES FOR LEASE

41951 REMINGTON AVENUE - TEMECULA, CA

### SUITE AVAILABILITY

#### FIRST FLOOR

SUITE	± SIZE	MONTHLY LEASE RATE	COMMENTS
100	2,140	\$3,724 / MONTH (\$1.74 / PSF / MONTH)	Highly Desirable Corner Office Off Building Lobby With Double Door Entry. Contact Agent To Tour.
130	1,660	\$2,805 / MONTH (\$1.69 / PSF / MONTH)	2 Private Offices, Open Work Area and Storage

#### SECOND FLOOR

SUITE	± SIZE	MONTHLY LEASE RATE	COMMENTS
220	2,923	\$4,794 / MONTH (\$1.64 / PSF / MONTH)	Corner Location, 5 Private Offices, Open Work Area, Coffee Bar and Storage
250	1,506	\$2,395 / MONTH (\$1.59 / PSF / MONTH)	Corner Location, 2 Private Offices, Open Work Area, Coffee Bar and Storage
260	2,954	\$4,992 / MONTH (\$1.69 / PSF / MONTH)	Corner Location, 4 Private Offices, Open Work Area, Kitchen with Coffee Bar

Rev. 06/09/2026

- 5% Annual Increases.
- Rates based on a minimum 3-year term.
- 20% premium for 2-year terms.

All rental rates are quoted based upon a Modified Gross Lease form.

Rental rates are subject to change at the Owner's sole discretion.

*No call centers, collection agencies, multi-level marketing firms or telephone marketing operations.*

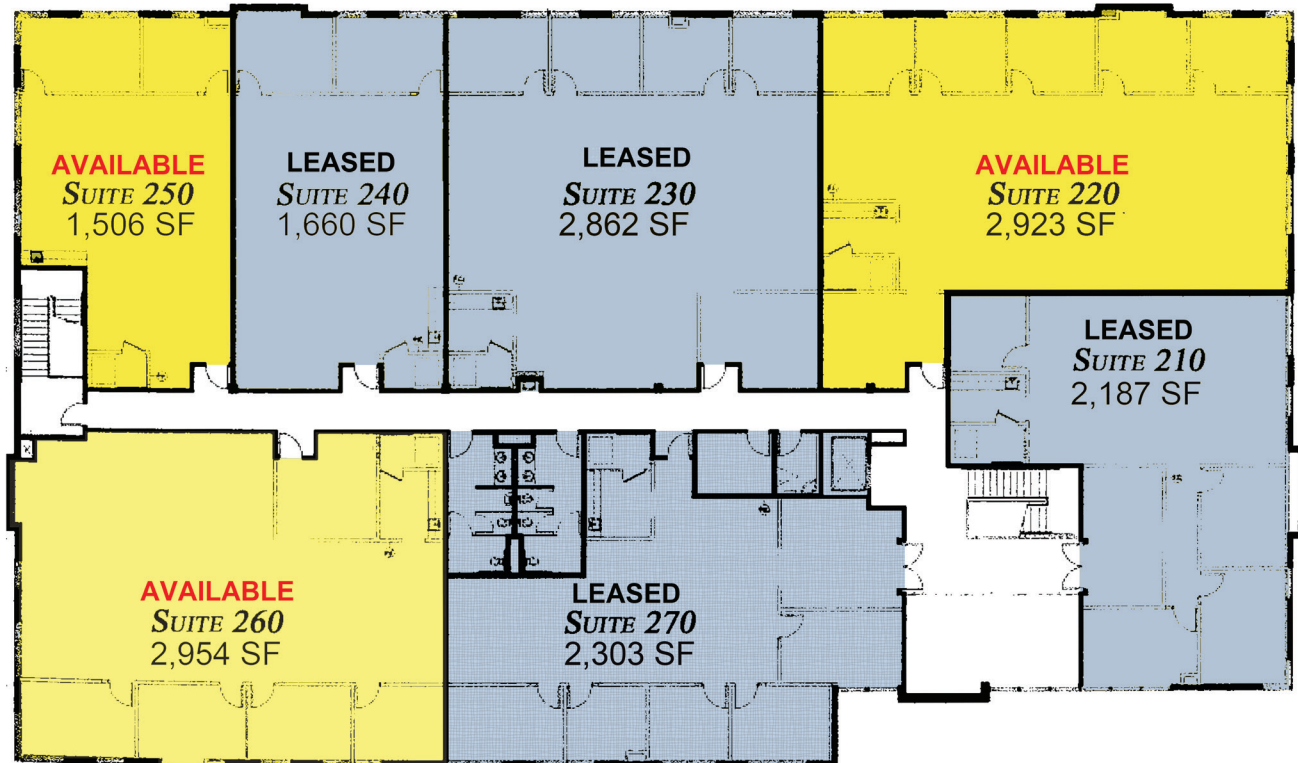
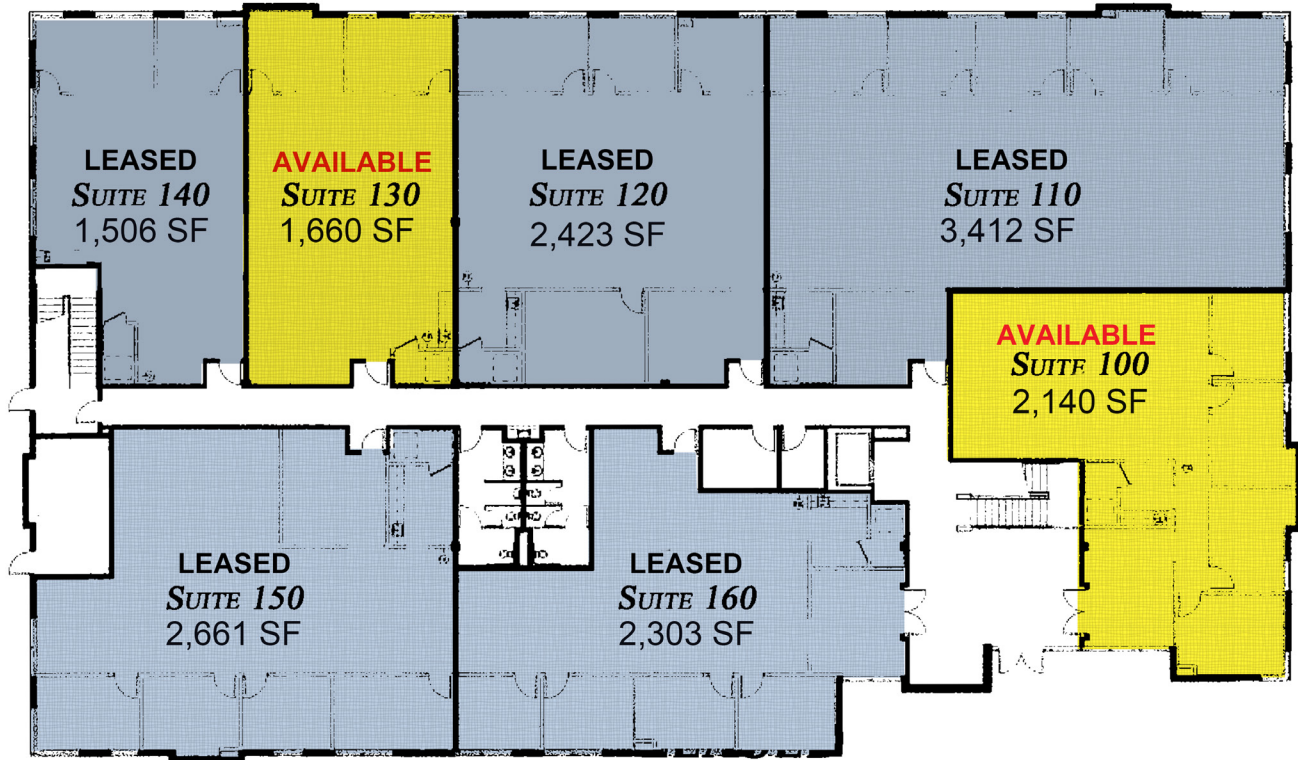


**JIM NADAL, ccim • 951.445.4520 • jnadal@leetemecula.com • DRE #01040679**

# LEGACY CORPORATE CENTER

## OFFICE SUITES FOR LEASE

41951 REMINGTON AVENUE - TEMECULA, CA



**JIM NADAL, ccim • 951.445.4520 • jnadal@leetemecula.com • DRE #01040679**