

# FOR SALE

7930 US Highway 301  
Tampa, Florida 33637



## 2 buildings totaling 21,307 sf on ±2 Acres

### Property highlights

- 2 (12' x 12') drive-in doors - 1st building
- 1 (12' x 12') drive-in door - 2nd building
- ±6,000 sf office
- 14' - 25' clear height
- Signage and frontage along US Highway 301
- Fenced and secured laydown yard

**AVISON  
YOUNG**

**John Bencivenga**

john.bencivenga@avisonyoung.com  
+1 813 280 8993

**Jason Steele**

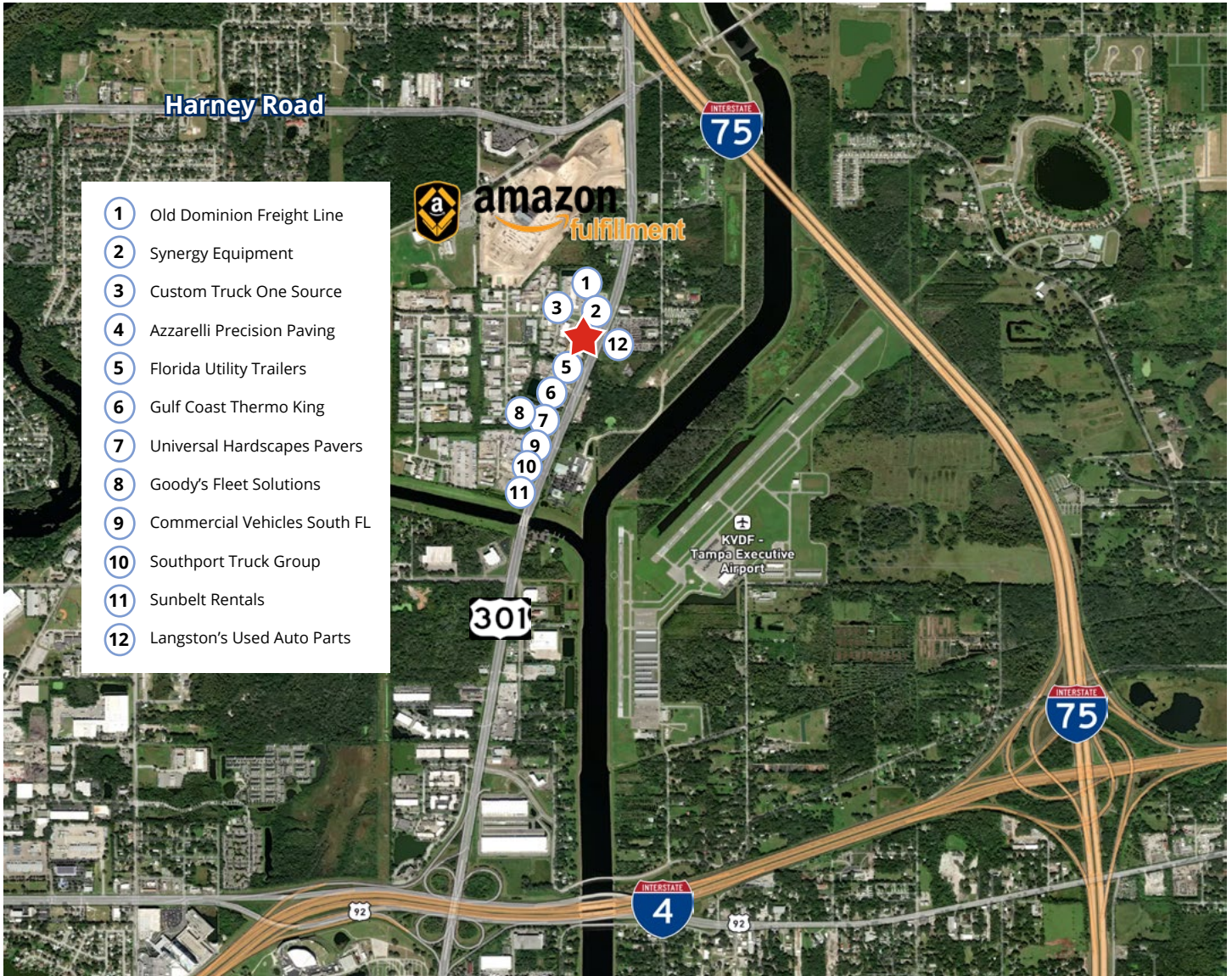
jason.steele@avisonyoung.com  
+1 813 314 7808

**Kenneth E. Lane III**

ken.lane@avisonyoung.com  
+1 813 444 0623

# Neighboring Tenants

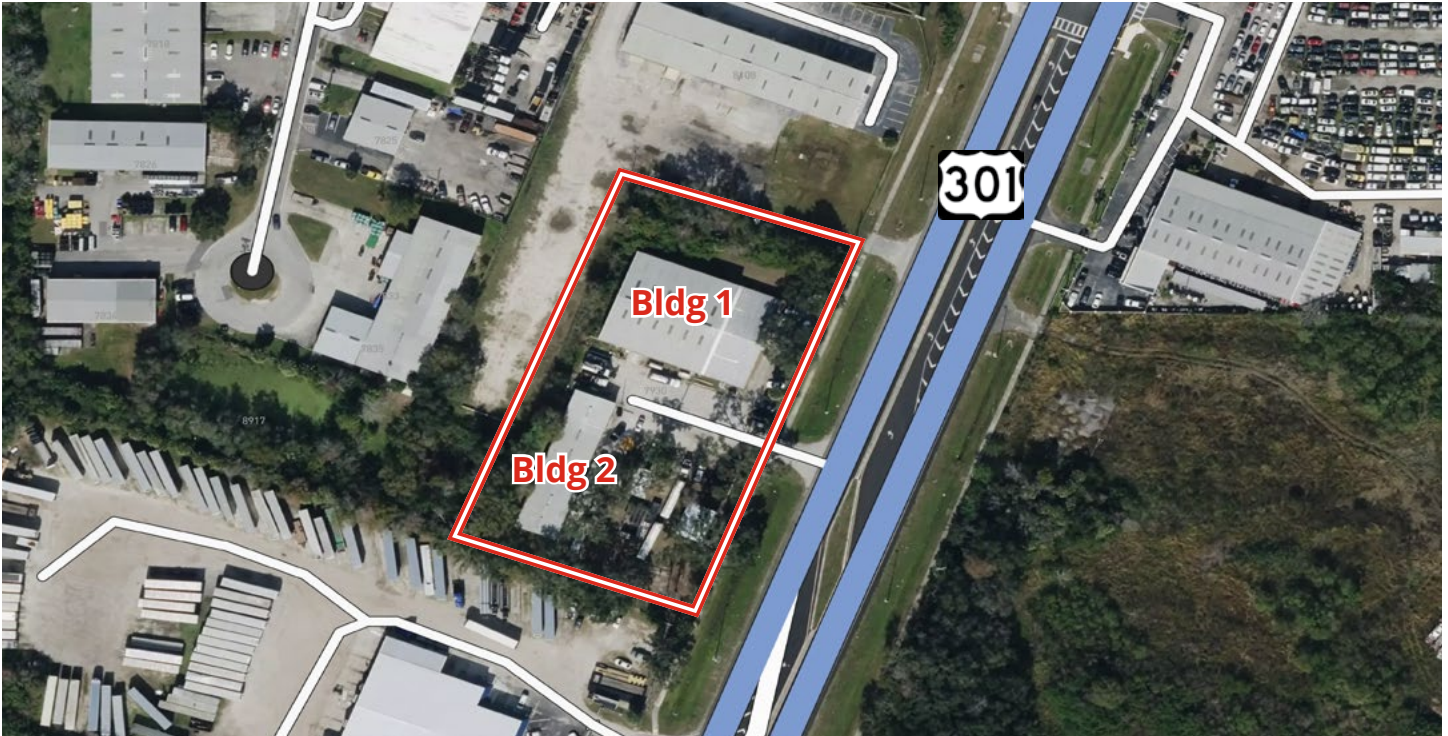
7930 US Highway 301  
Tampa, Florida 33637



	Tampa	10 Miles		Traffic Count (US Hwy 301) 22,836
	Orlando	79 Miles		
	Ocala	93 Miles		
	Tampa International	6 Miles		Interstate 75 1.1 Miles Interstate 4 1.7 Miles State Road 60 4.8 Miles
	Lakeland International	26 Miles		
	Orlando International	80 Miles		

# Property Information

7930 US Highway 301  
Tampa, Florida 33637



## Property Highlights

	Building 1	Building 2
Building Size:	15,307 SF 10,266 SF Warehouse 5,041 SF Office	6,000 SF 4,752 SF Warehouse 1,248 SF Office
Year Built:	1983	1983
Drive-in Doors:	2 - (12' x 12')	2 - (12' x 12')
Clear Height:	18' - 25'	12' - 14'
Power:	400Amps/280V/3Phase	200Amps/240V/3Phase
Zoning:	M - Manufacturing Subtype - Industrial	M - Manufacturing Subtype - Industrial
Construction:	Metal with Steel Frame	Metal with Steel Frame

# Property photos

7930 US Highway 301  
Tampa, Florida 33637



## Drive-time Demos

	10 Minutes	15 Minutes	20 Minutes
2024 Total Population:	65,727	250,222	592,422
Daytime Population:	90,194	340,979	745,431
Total Businesses:	3,249	14,946	32,226
Total Households:	24,712	97,769	236,871
Median Age:	35	34	35

**John Bencivenga**

john.bencivenga@avisonyoung.com  
+1 813 280 8993

**Jason Steele**

jason.steele@avisonyoung.com  
+1 813 314 7808

**Kenneth E. Lane III**

ken.lane@avisonyoung.com  
+1 813 444 0623

**AVISON  
YOUNG**