

**SRP**  
Stewart-Rose Properties

OFFICE / WAREHOUSE LEASE



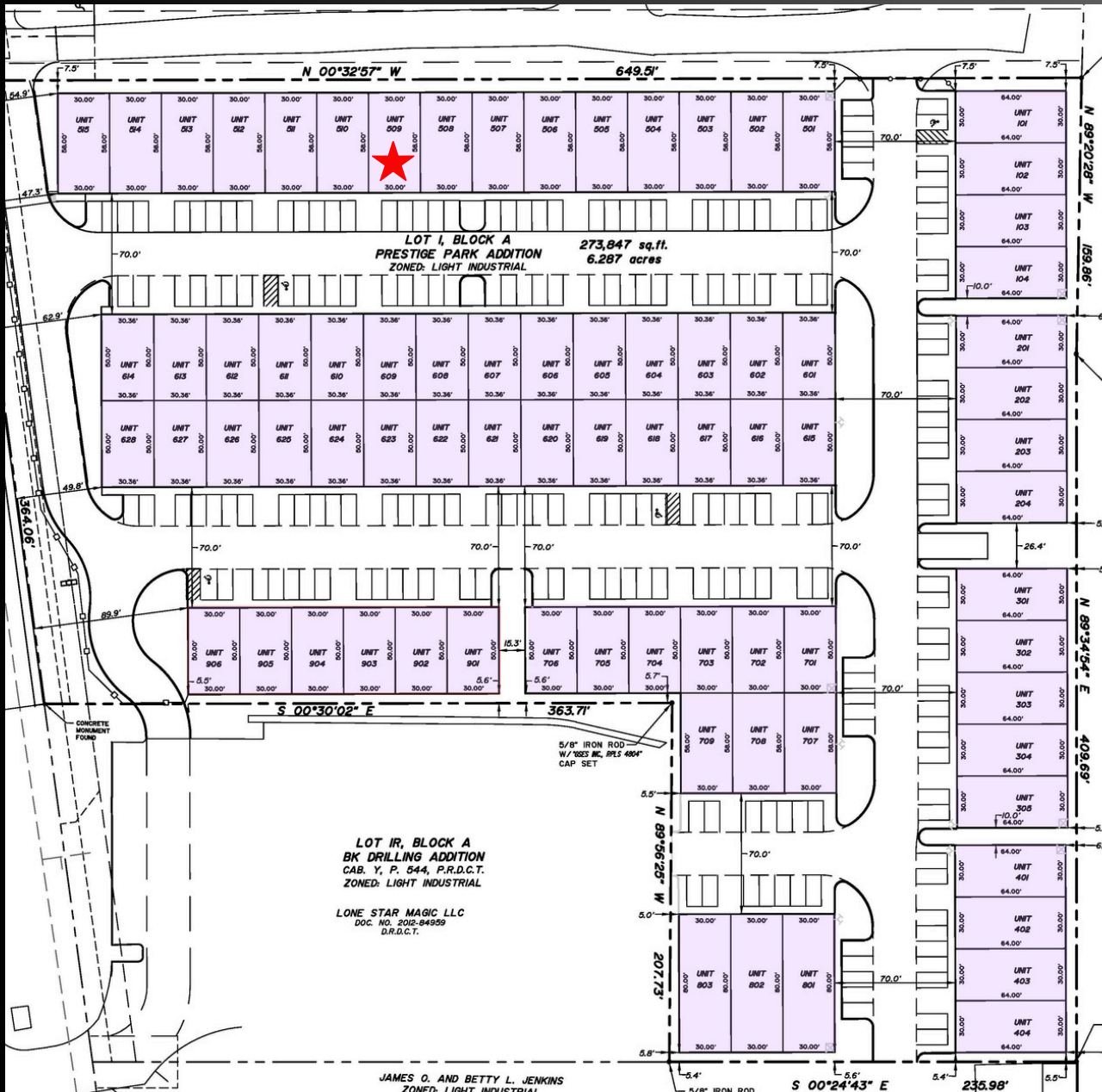
**985 E. State Hwy 121 Business  
Lewisville, TX**

**BUILDING 5, SUITE 509**

- 1,740 SF AVAILABLE
- 200 AMP, 3 PHASE POWER
- 20' - 24' CEILING HEIGHT
- 14 X 14 BAY DOORS (2)
  - FIRE SPRINKLERS
- DRIVE THROUGH BAY DOORS

Larry Rose Jr.  
Mobile: 972-921-7579 // Office: 940-365-3470  
Larry@s-rp.com



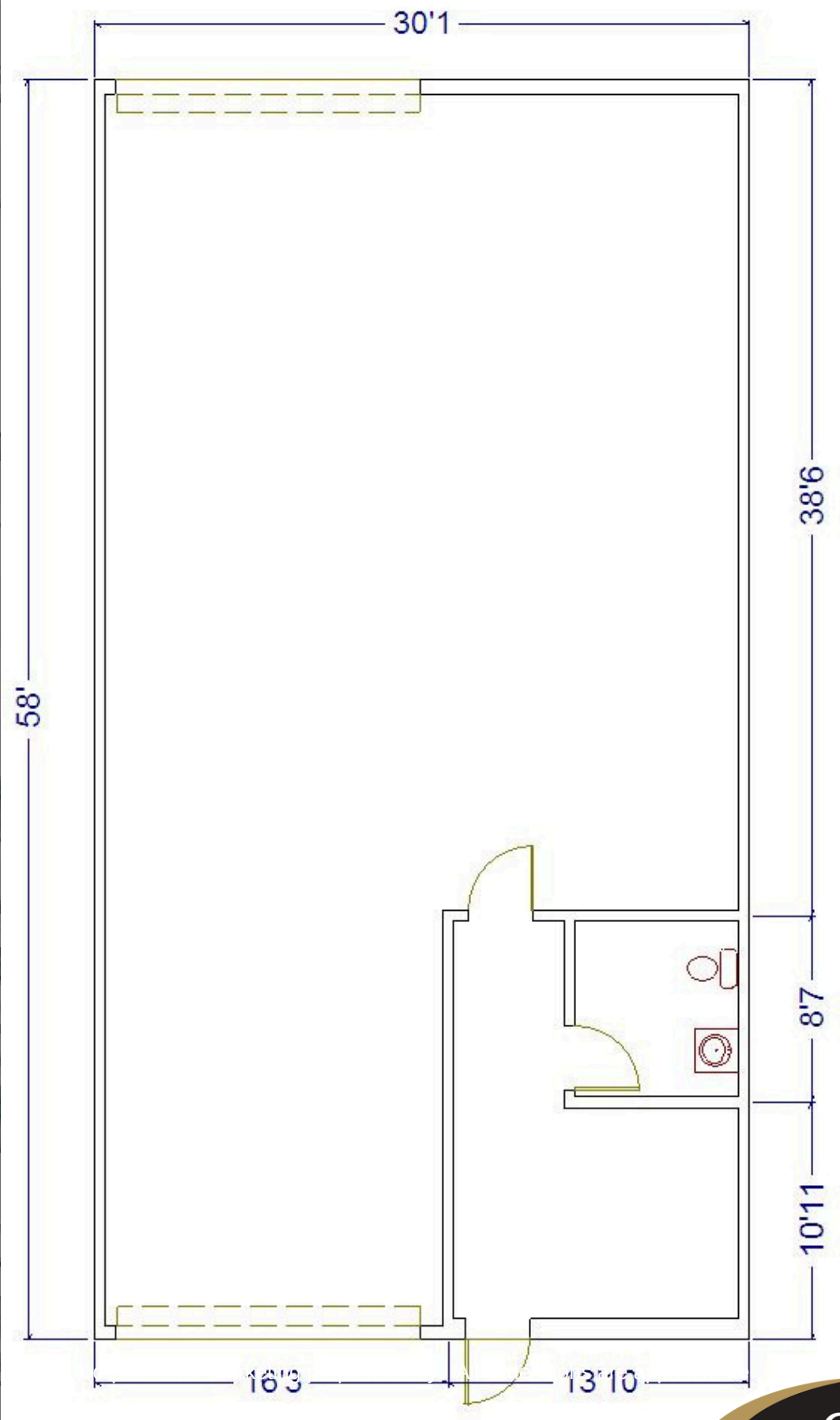


SITE PLAN



**SRP**  
Stewart-Rose Properties

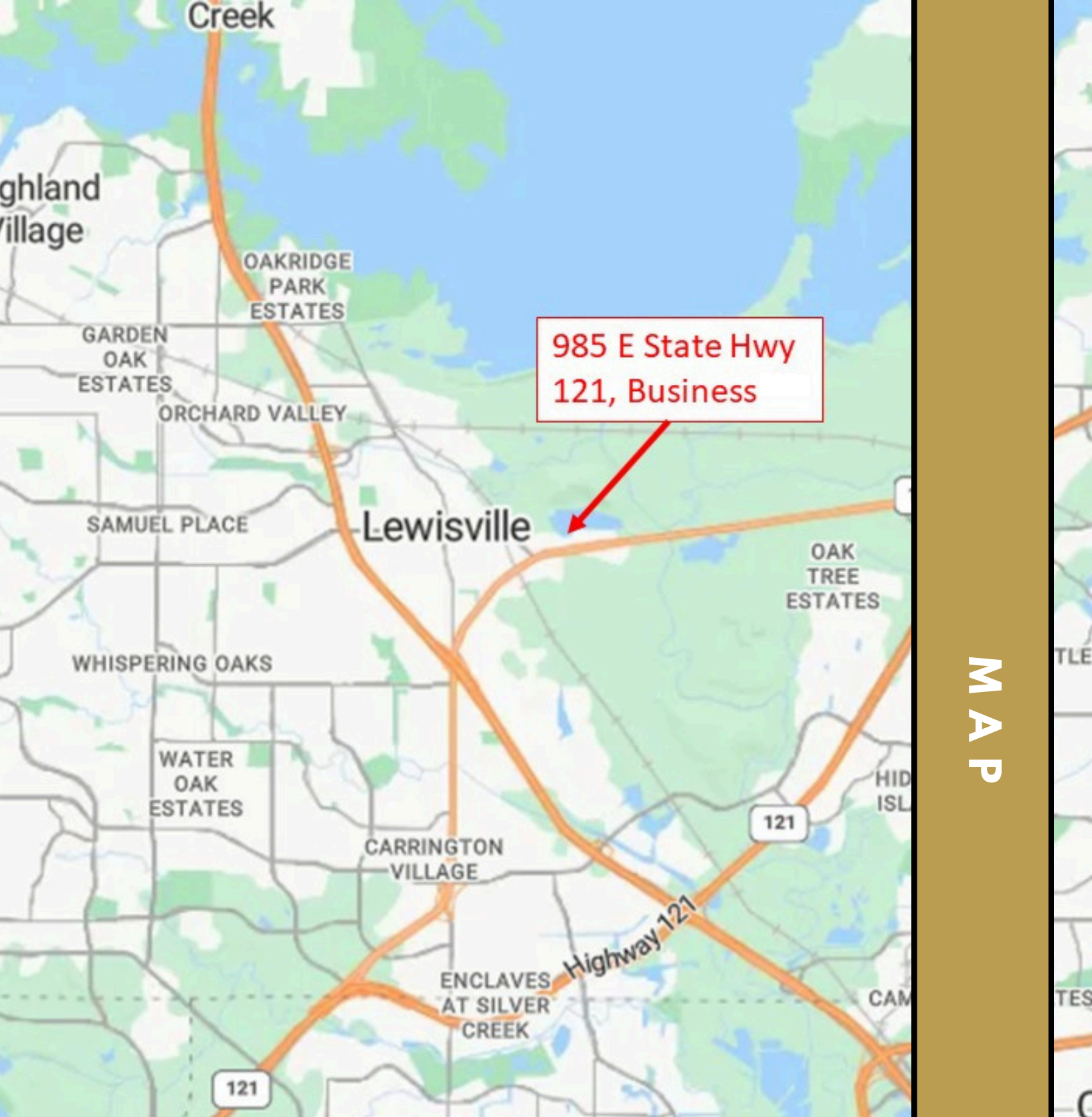
Larry Rose Jr.  
Mobile: 972-921-7579 // Office: 940-365-3470  
Larry@s-rp.com



FLOOR PLAN



Larry Rose Jr.  
 Mobile: 972-921-7579 // Office: 940-365-3470  
 Larry@s-rp.com



M A P

[Click here for Driving Directions](#)



Larry Rose Jr.  
Mobile: 972-921-7579 // Office: 940-365-3470  
Larry@s-rp.com