

**4275**  
**S BURNHAM AVE**  
LAS VEGAS, NV 89119

**DESERT SPRINGS  
MEDICAL PLAZA II  
MEDICAL OFFICE  
FOR LEASE**

**SUITES RANGING FROM  
294 SF - 6,213 SF**



**MIKE TYMCZYN**

VICE PRESIDENT  
702.216.2371 **DIRECT**  
miket@dcghealthcare.com  
BS.0147041



**HEALTHCARE**

**CORFAC**  
INTERNATIONAL

## PROPERTY HIGHLIGHTS

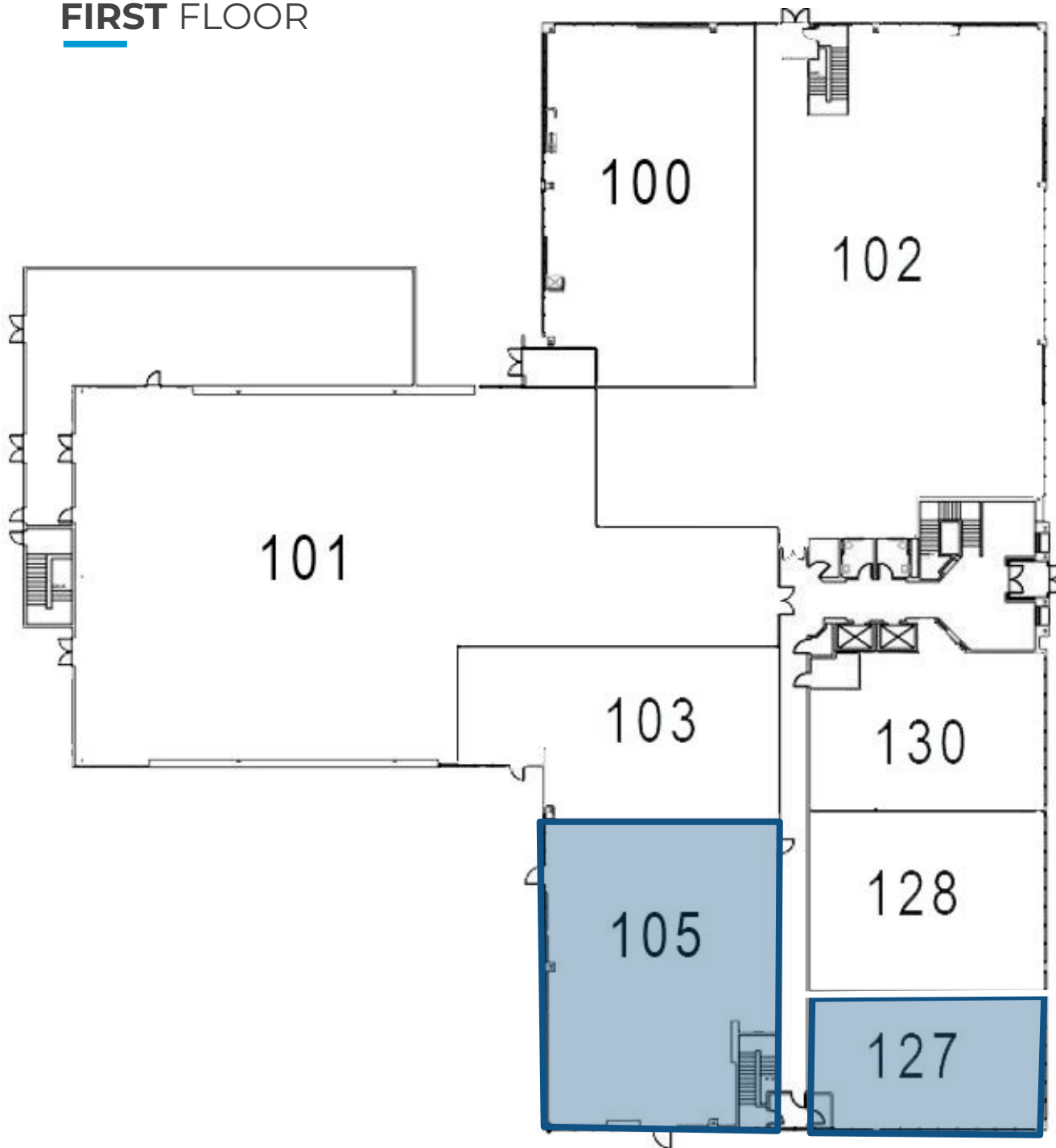
- Turnkey suites available
- Tenant improvement allowances available
- Located in the Flamingo office corridor
- Current specialties include: **Cardiology - Outpatient Surgery Center - Laboratory - Internal Medicine**



# DESERT SPRINGS MEDICAL PLAZA II



# FIRST FLOOR



## AVAILABLE SUITES

SUITE 105	3,762 SF
SUITE 127	1,935 SF

DESERT SPRINGS MEDICAL PLAZA II

SUITE 105

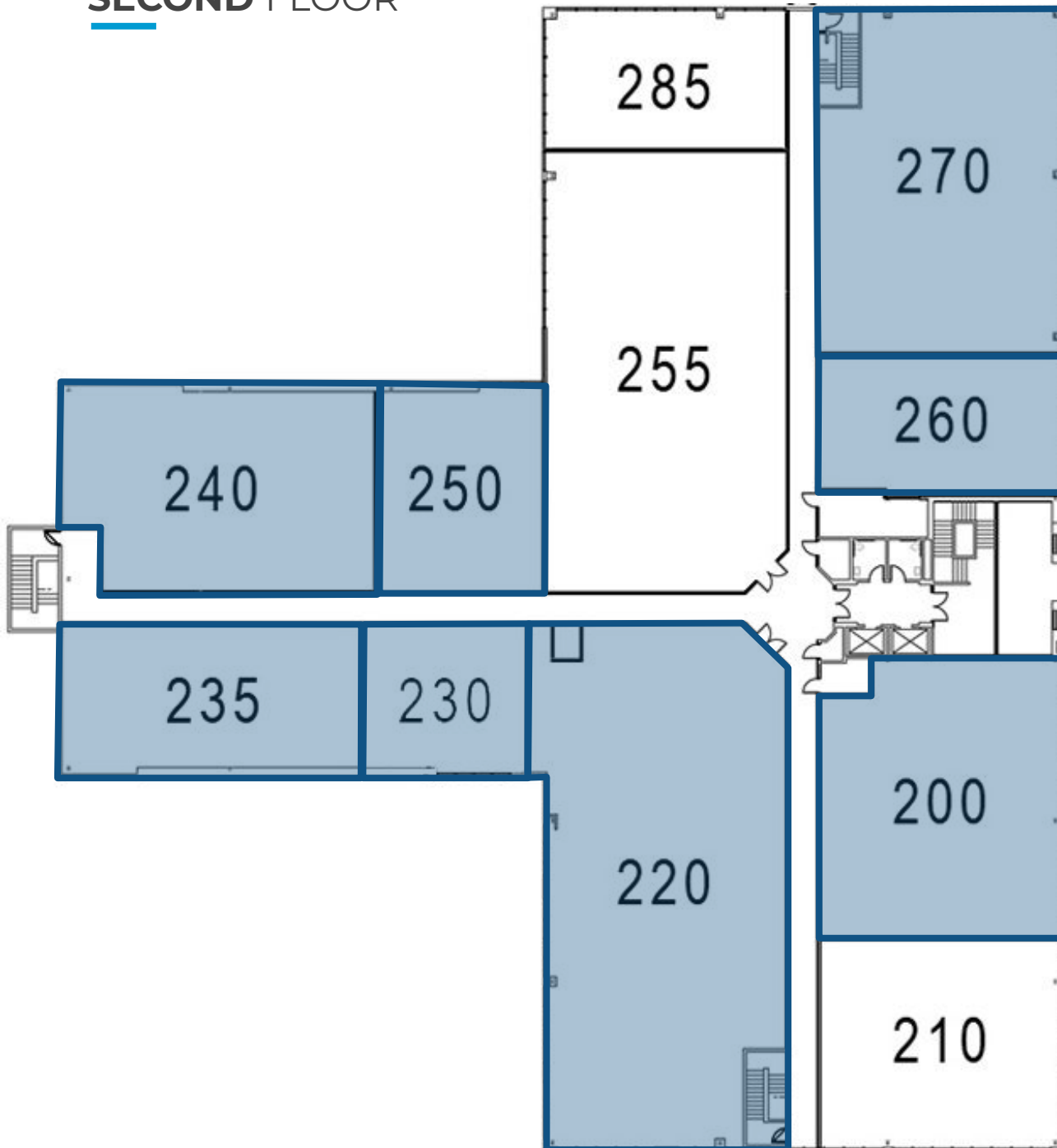


DESERT SPRINGS MEDICAL PLAZA II

SUITE 128



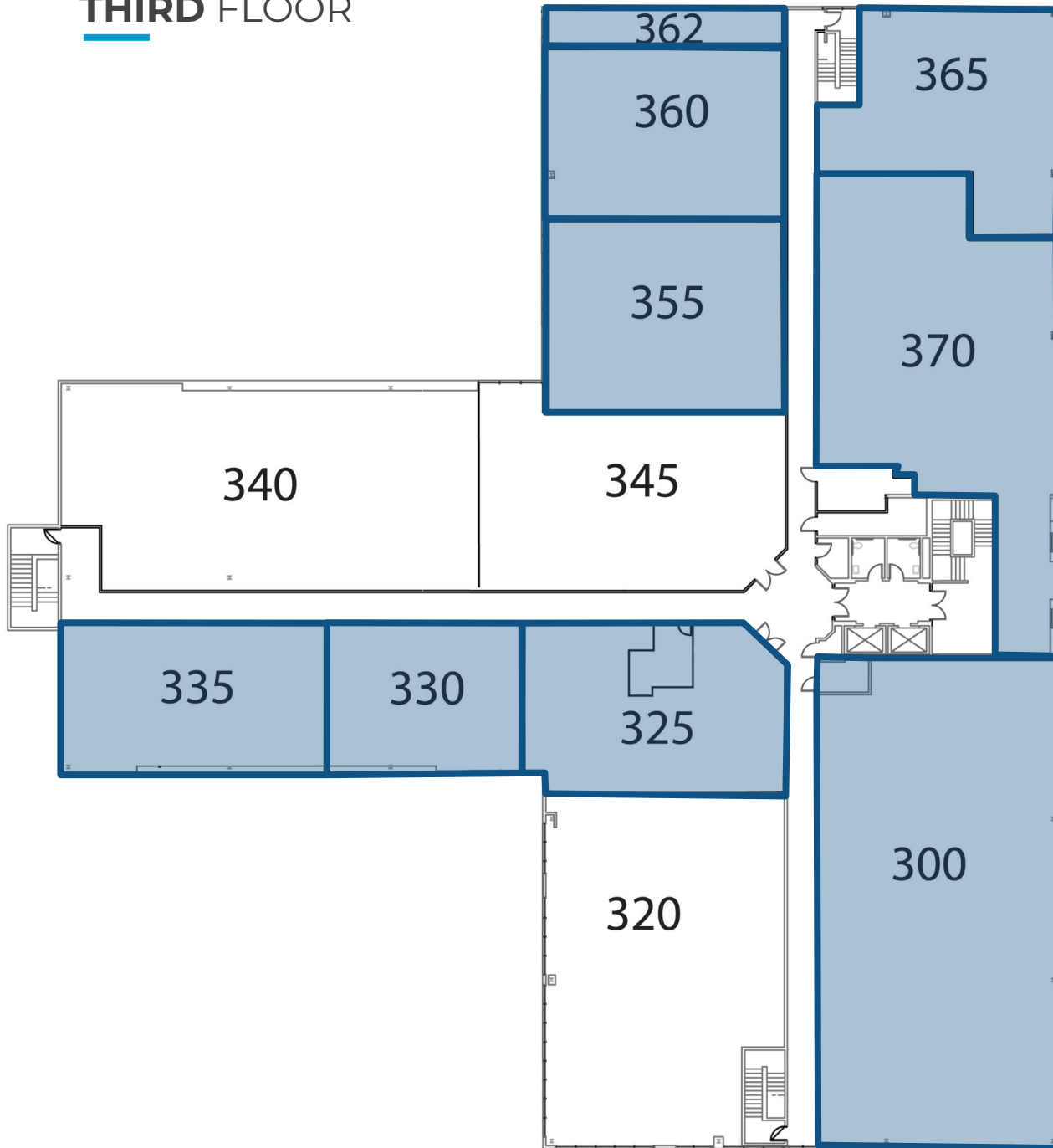
## **SECOND** FLOOR



## AVAILABLE SUITES

SUITE 200	2,675 SF
SUITE 220	6,213 SF
SUITE 230	1,375 SF
SUITE 235	2,162 SF
SUITE 240	3,097 SF
SUITE 250	1,902 SF
SUITE 260	1,907SF
SUITE 270	3,839 SF

# THIRD FLOOR



## AVAILABLE SUITES

SUITE 300	5,994 SF
SUITE 325	1,998 SF
SUITE 330	1,518 SF
SUITE 335	2,032 SF
SUITE 355	2,053 SF
SUITE 360	2,390 SF
SUITE 362	294 SF
SUITE 365	1,989 SF
SUITE 370	4,031 SF