

2401 Pacific Coast Highway

Hermosa Beach, CA 90254



BLUE WATER

REALTY ADVISORS INC

JAMES K. STANFILL, President
Tel: 310.625.1132 | Bre #: 01113910
stanfill@bluewatererra.com

2401 Pacific Coast Highway, Hermosa Beach, CA 90254



BLUE WATER
REALTY ADVISORS INC

JAMES K. STANFILL, President
Tel: 310.625.1132 | Bre #: 01113910
stanfill@bluewatera.com

2401 Pacific Coast Highway, Hermosa Beach, CA 90254

VARIETY OF USES

- Ideal for startups, graphic designers, technology professionals, accountants, insurance, and a wide variety of office and administrative uses
- Some medical uses such as one-on-one psychotherapy
- Perfect satellite office for a local resident
- Ocean-view suites with outdoor balconies, natural light for beautiful photography backdrops

HEALTH SAFETY FEATURES

- Private en suite restroom in every unit
 - no common restrooms
- Tenant-controlled independent HVAC systems
 - no shared vents with other suites
- Natural ventilation with operable windows, open walkways, and sliding doors in west-facing suites
- Distancing options include dedicated outdoor balconies, two outdoor stairwells, open walkways, and a central elevator



BLUE WATER

REALTY ADVISORS INC

JAMES K. STANFILL, President
Tel: 310.625.1132 | Bre #: 01113910
stanfill@bluewatererra.com

2401 Pacific Coast Highway, Hermosa Beach, CA 90254

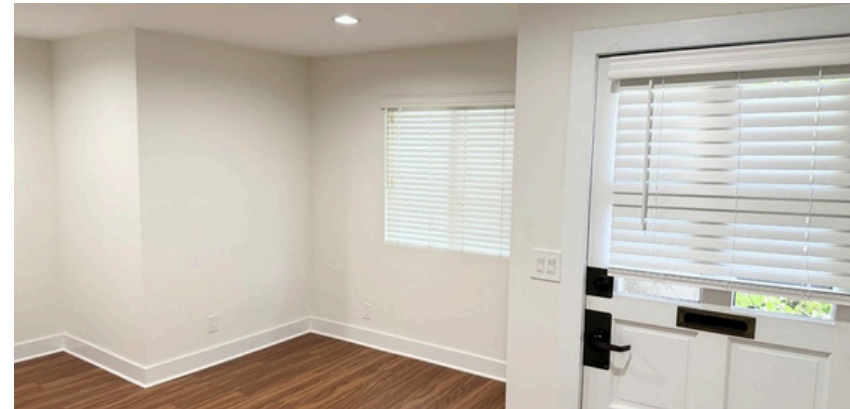
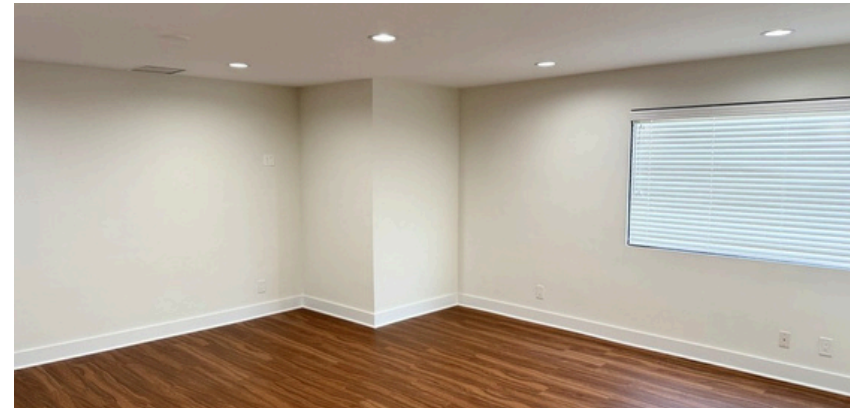
SUITE 206

554 SQUARE FEET

\$2,400 PER MONTH, MODIFIED GROSS

SUITE HIGHLIGHTS

- Bright corner office suite with multiple windows, which is suitable for a variety of uses
- Large private windowed office with separate windowed reception room/2nd office
- Private en suite bathroom with storage
- Dimmable LED lighting and medium warm brown plank flooring
- Tenant controlled independent HVAC system
- One free reserved, gated subterranean parking space with the ability to rent one additional parking space for a premium.
- Large monument sign inclusive for all tenants.
- Elevator access to lower reserved parking
- Outdoor walkway on the 2nd floor
- Dedicated guest parking
- FIOS ready

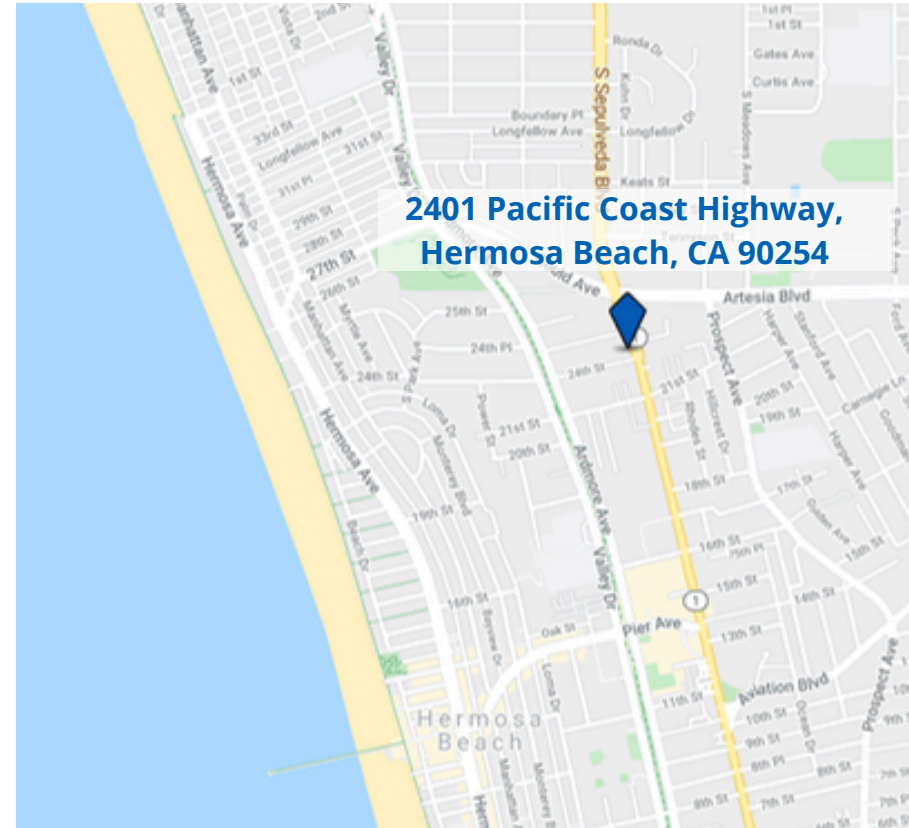


2401 Pacific Coast Highway, Hermosa Beach, CA 90254

AREA HIGHLIGHTS

Hermosa Beach is featured as one of the top 10 beaches in the United States on the Travel Channel. Hermosa Beach, known as “The Little Gem by the Sea”, has something for everyone. The surf, sand, and palms welcome visitors and residents year-round. This intimate sun-drenched beachside village combines a spectacular coastline, wide sandy beach, a century-old rich history, specialty shops, restaurants, and lively festivals - long a favorite with Californians. Hermosa Beach is located in the South Bay of Los Angeles nestled in between affluent Manhattan Beach to its north and vibrant Redondo Beach to its south.

The city is popular for its beach volleyball, surfing, sunbathing, paddleboarding, restaurants, and great weather. The average temperature is 70°F (22°C) in the summertime and 55°F (13°C) in winter. Westerly sea breezes ease occasional high summertime temps in the Los Angeles area and help to keep smog away. Hermosa averages 325 days of sunshine per year.



The population is approximately 19,789 with an average household income of \$155,163. Manhattan Beach has an average income of \$217,703 and Redondo Beach has an average income of \$126,671.



JAMES K. STANFILL, President
Tel: 310.625.1132 | Bre #: 01113910
stanfill@bluewatera.com