

# RIDGEFIELD BUSINESS CENTER

## SUITE FOR LEASE



# 1200

RIDGEFIELD BLVD

SUITE 200 | 5,234 SF

\$19.50/SF/YR/NNN  
\$8,505.35/MO \$9.40/RSF  
\$12,605.21/MO TOTAL

AUSTIN WALKER | CCIM, SIOR  
COMMERCIAL BROKER  
C: 828.713.0777  
AWALKER@WHITNEYCRE.COM



WHITNEY COMMERCIAL REAL ESTATE  
1100 RIDGEFIELD BLVD STE 100 ASHEVILLE, NC 28806

All information herein obtained from sources deemed reliable but not guaranteed, and may change or be updated without notice.

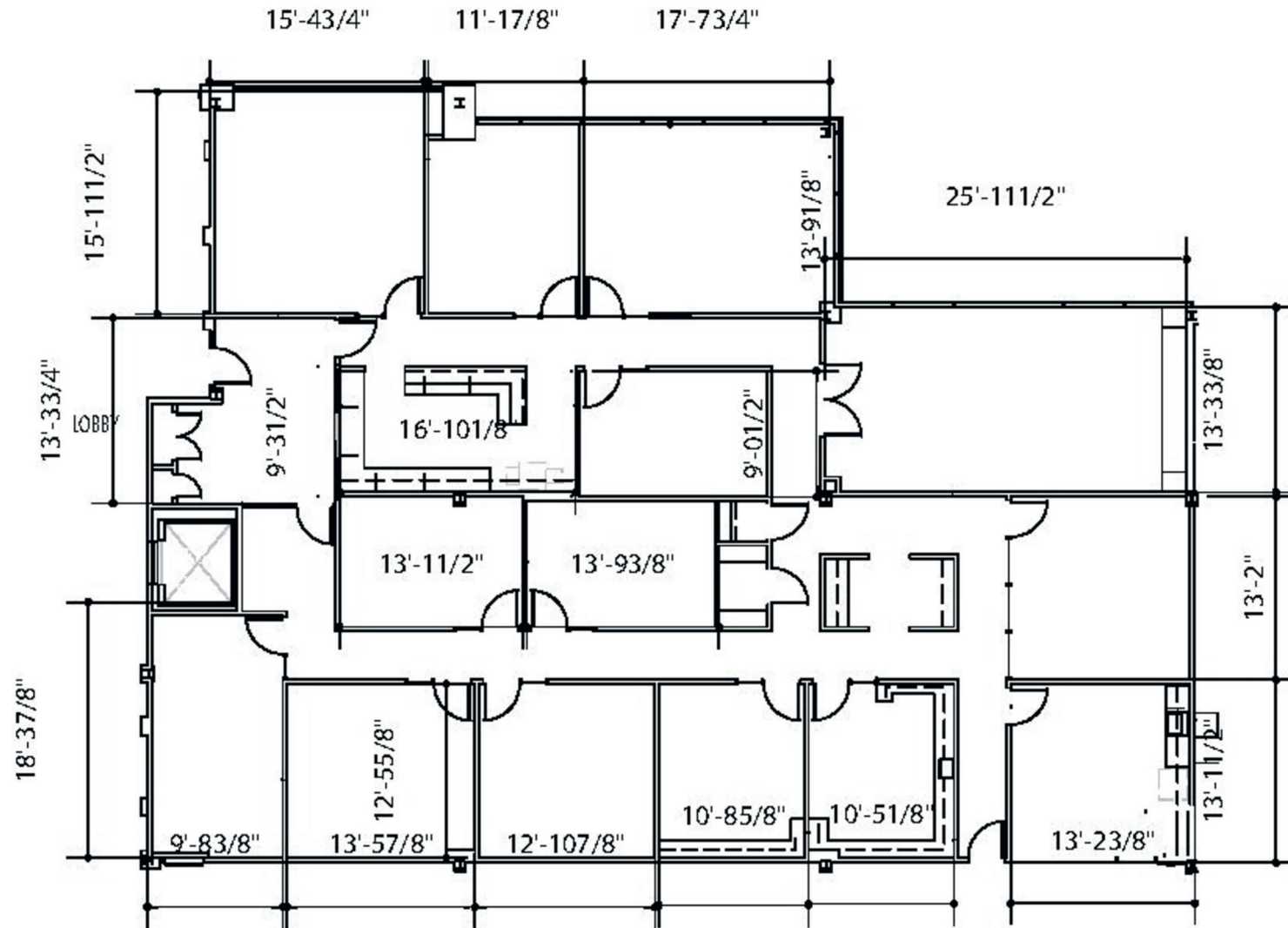
# GALLERY

AUSTIN WALKER, CCIM, SIOR  
C: 828.713.0777



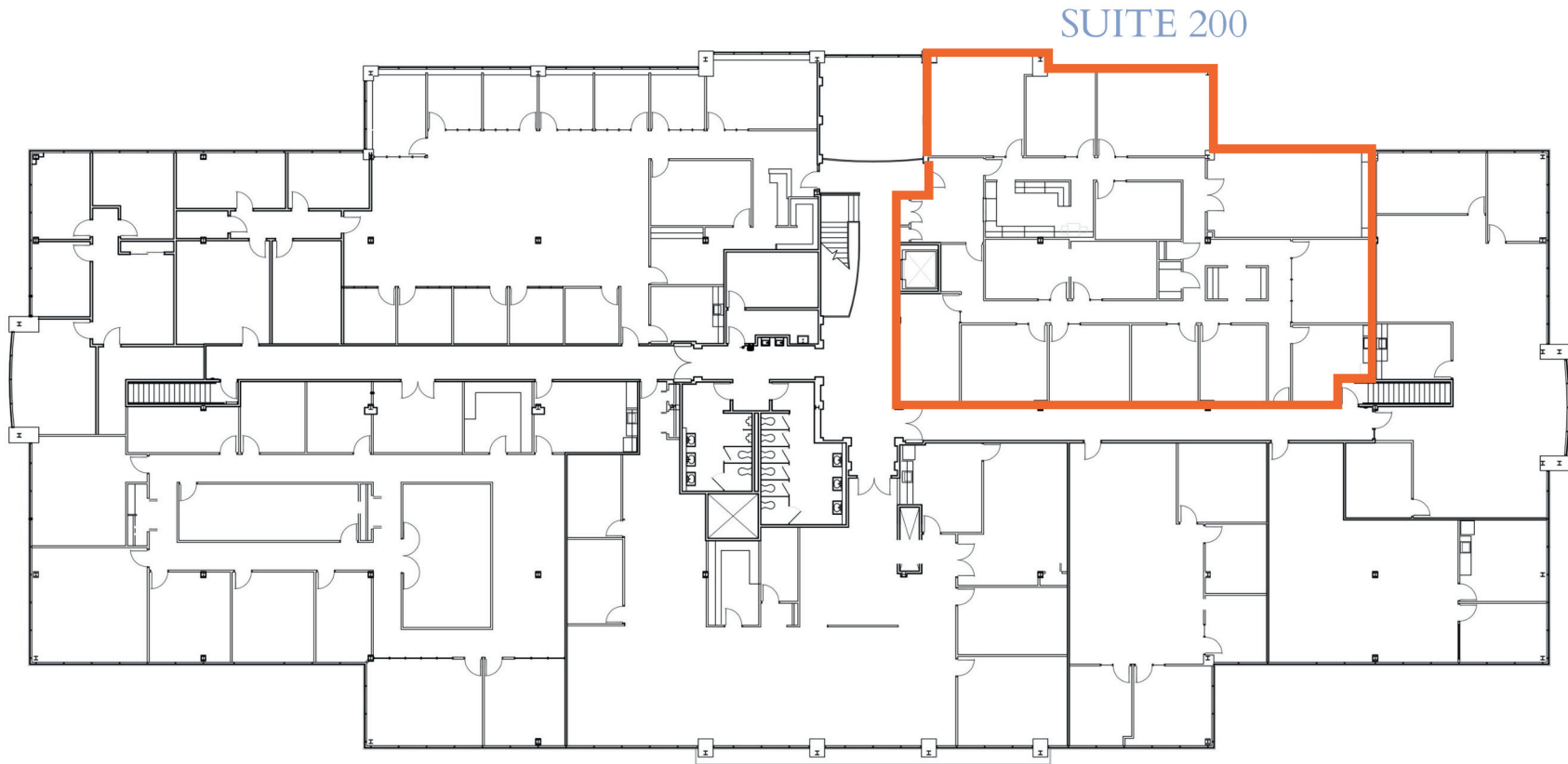
# FLOORPLAN

AUSTIN WALKER, CCIM, SIOR  
C: 828.713.0777



# FLOORPLAN

AUSTIN WALKER, CCIM, SIOR  
C: 828.713.0777



UPPER LEVEL FLOOR PLAN