

1649 Avenue L

Riviera Beach, FL 33404

±41,329 SF OFFICE/WAREHOUSE ON ±2.42 ACRES



PROPERTY BREAKDOWN

Main Building

+ ±39,009 SF Total

- Space Breakdown
 - ±18,665 SF Concrete Block
 - ±9,344 SF Metal Warehouse
 - ±11,000 SF Covered Shed

Maintenance Building

+ ±2,320 SF Office/Warehouse Total

PROPERTY HIGHLIGHTS

- + 18' to 22' Clear
- + ±4,764 SF of Improved Office and Showroom Areas
- + Fully Fenced, Lighted and Secure Yard Area
- + Heavy Power - 3 Phase, 1,200+ Amps
- + Ample Parking
- + Year Built - 1957/1974
- + Newly renovated office, showroom, and counter areas
- + FEC Rail Contiguous
- + Back Up Generator
- + No Columns in Warehouse Areas
- + Grade and Dock High Loading
- + Multiple 14' x 17' Grade Level Doors
- + 2 Covered Dock Wells
- + Insulated Roof Deck
- + Zoned IG - General Industrial
- + Proximity to I-95 and Port of Palm Beach

Contact Us

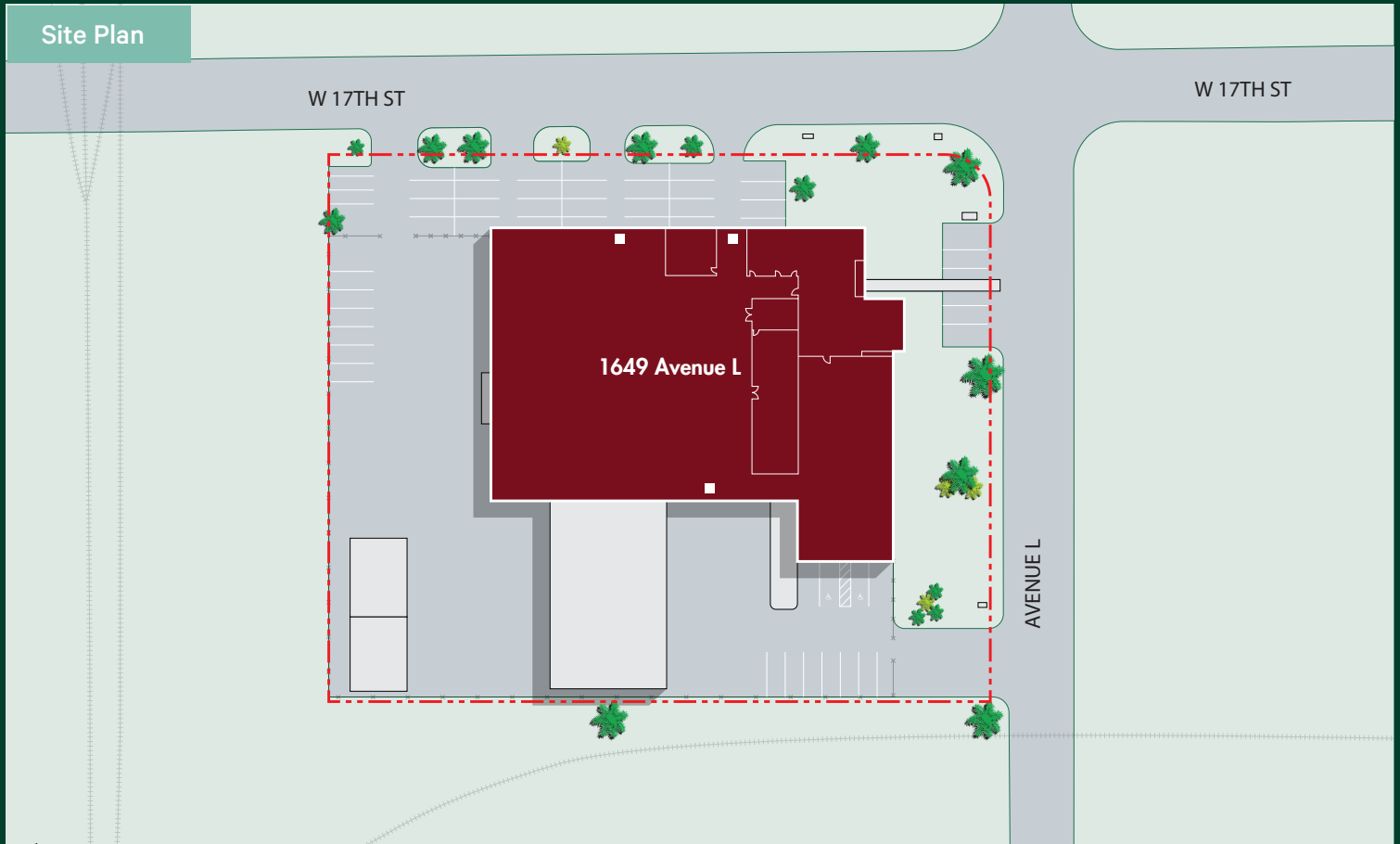
KIRK NELSON

Executive Vice President
+1 561 716 9936
kirk.nelson@cbre.com

ROBERT C. SMITH

Executive Vice President
+1 561 707 5558
robert.c.smith@cbre.com

Sale Price - Call for Details



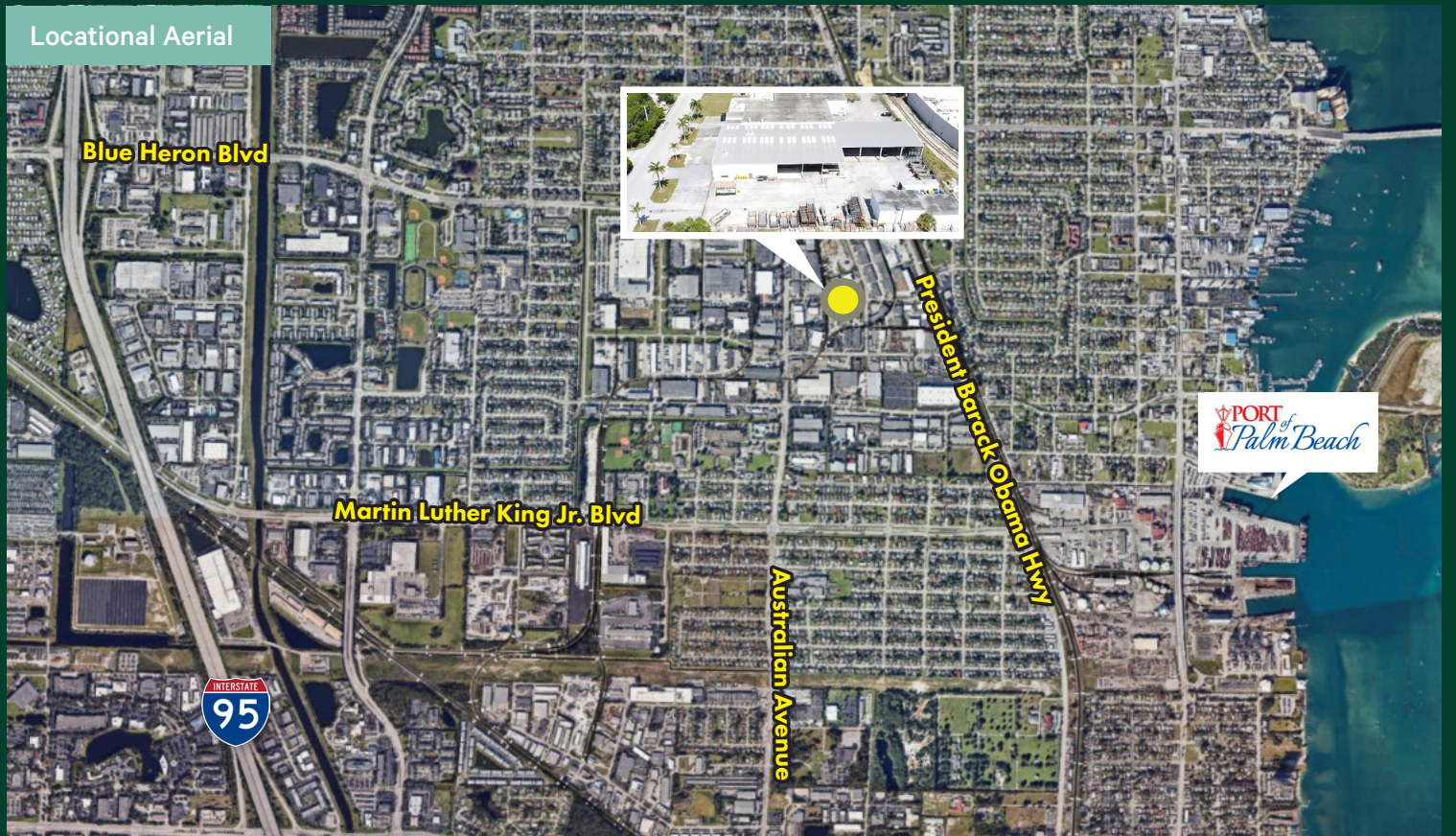
±41,329 SF OFFICE/WAREHOUSE/MANUFACTURING
1649 Avenue L | Riviera Beach, FL

For Sale

Additional Photos



Locational Aerial



Contact Us

KIRK NELSON

Executive Vice President
+1 561 716 9936
kirk.nelson@cbre.com

ROBERT C. SMITH

Executive Vice President
+1 561 707 5558
robert.c.smith@cbre.com

© 2026 CBRE, Inc. All rights reserved. This information has been obtained from sources believed reliable, but has not been verified for accuracy or completeness. You should conduct a careful, independent investigation of the property and verify all information. Any reliance on this information is solely at your own risk. CBRE and the CBRE logo are service marks of CBRE, Inc. All other marks displayed on this document are the property of their respective owners, and the use of such logos does not imply any affiliation with or endorsement of CBRE. Photos herein are the property of their respective owners. Use of these images without the express written consent of the owner is prohibited.