

LEWIS TECHNOLOGY CENTRE

39575 and 39625 Lewis Drive, Novi, MI 48377

BROKER BONUS
\$2.00/SF

*Summer Lease Rate Special - \$11.95/SF



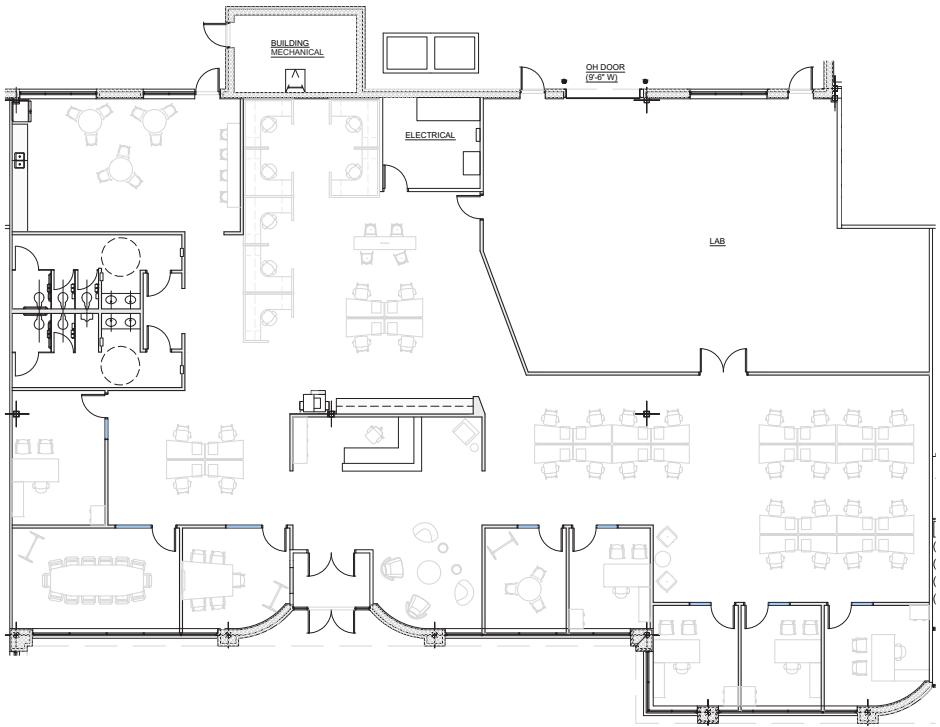
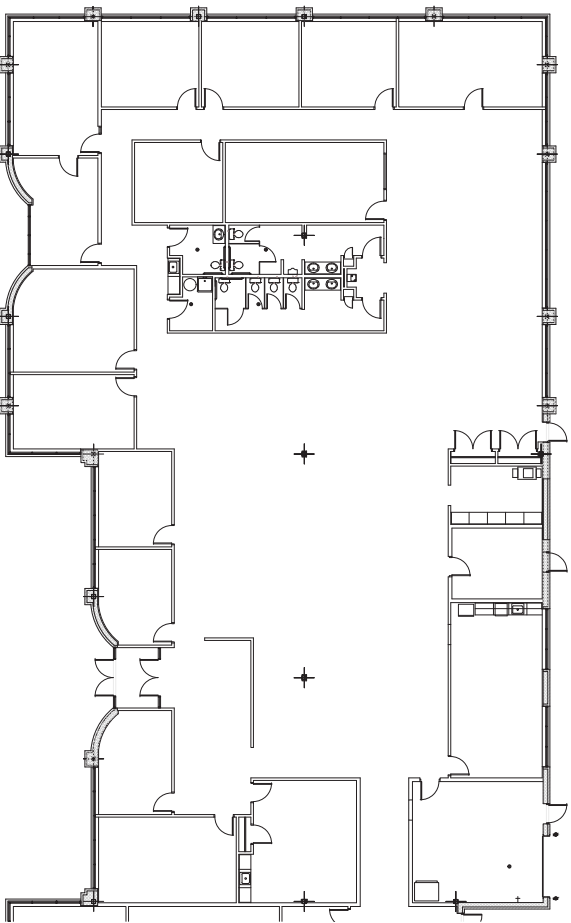
NEWMARK

THREE AVAILABLE SUITES
200, 500 & 900

*Only Available for Suite 200 and certain restrictions apply

LEWIS TECHNOLOGY CENTRE

FLOORPLANS



[SAMPLE FLOOR PLAN]

SUITE 200 39625 LEWIS DR
12,047 SF

SUITE 500 39575 LEWIS DR
8,732 SF





LEWIS TECHNOLOGY CENTRE

39575 and 39625 Lewis Drive, Novi, MI 48377

HIGHLIGHTS:

- High image Class A R&D flex building
- Available space includes
 - 12,047 SF
 - 8,732 SF
 - 6,398 SF
- 16' ceiling height
- Zoning permits most office, R&D and light industrial uses
- Direct parking lot access with high parking ratios
- Multiple grade level doors
 - Space can accommodate additional grade level doors
- Excellent location with immediate access to M-5, I-696, I-275 and I-96
- Exterior building signage available
- Starbucks, hotels, restaurants and child care in the immediate area

For more information, contact:

Daniel Canvasser

248.350.8141

daniel.canvasser@nmrk.com

Chris Hill

248.350.1192

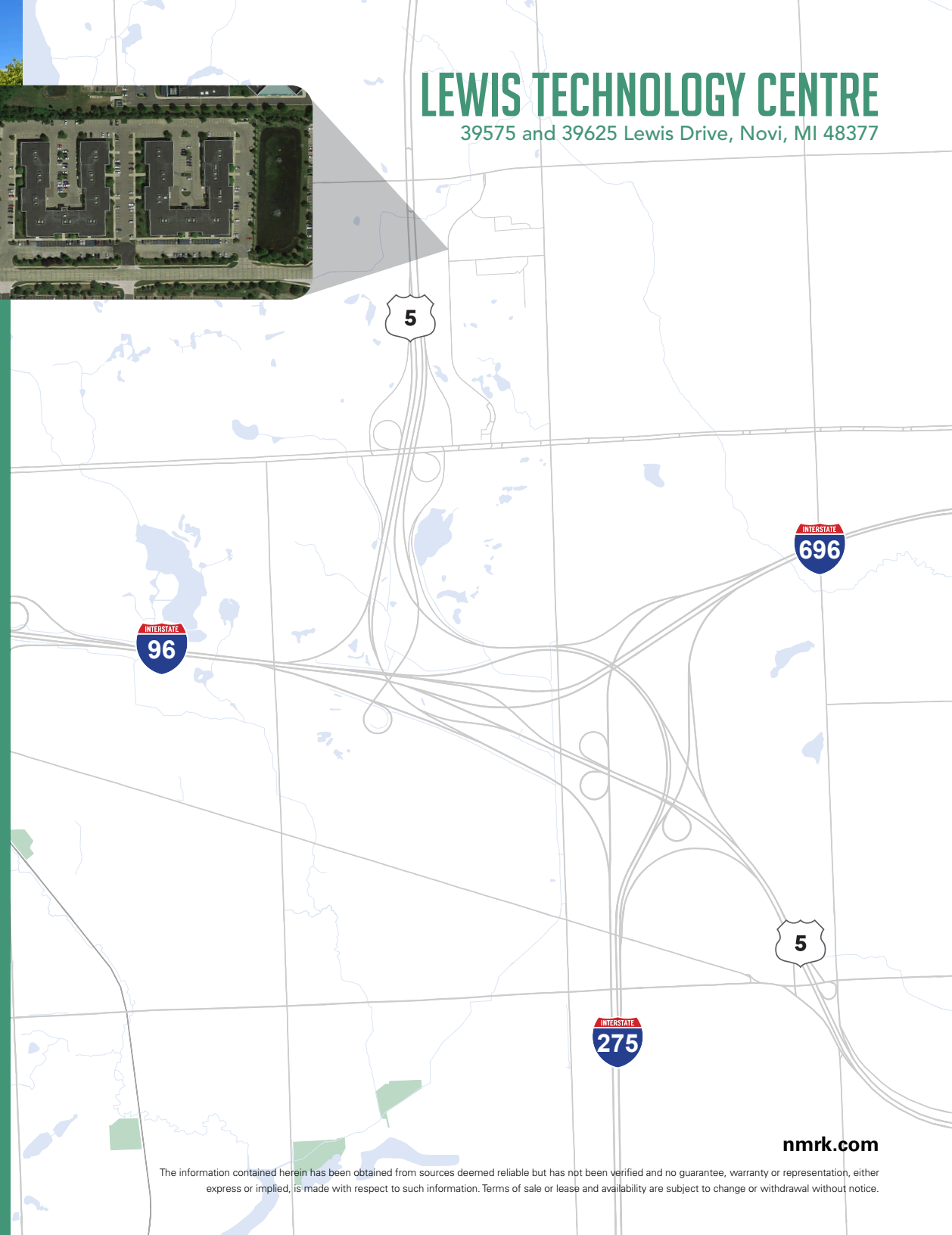
chris.hill@nmrk.com

Morgan Katz

248.871.2305

morgan.katz@nmrk.com

NEWMARK



nmrk.com

The information contained herein has been obtained from sources deemed reliable but has not been verified and no guarantee, warranty or representation, either express or implied, is made with respect to such information. Terms of sale or lease and availability are subject to change or withdrawal without notice.