

For Sublease - Plug-and-Play Office

Orlando Central Center

6,915 SF | \$26.50 / SF



1080 Woodcock Road, Ste 200

Orlando, Florida 32803

Property Highlights

- Suite 200 - 6,915 RSF - plug-and-play, fully furnished, wired and ready-to-go
- Open office layout, modern workplace design and pre-installed desk systems
- Lease rate includes utilities, building services and expenses
- Sublease through December 31, 2028
- Ideal for creative agencies, tech companies, telemarketing & general office
- Ample surface parking with 5/1,000 ratio
- On-site property management and overnight security
- Great location just off Maguire Blvd and East Colonial Drive (SR 50)
- Easy access to Orlando CBD, Winter Park, I-4 and SR 408
- 20 minutes from Orlando International Airport; 5 minutes to Orlando Executive Airport
- Surrounded by restaurants and retail



Lease Rate: \$26.50/SF Full Service

For more information

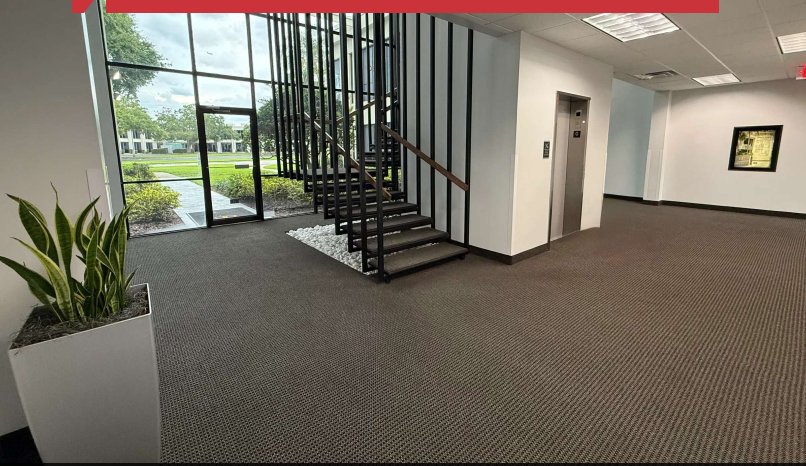
Andy McCaw, FMA

O: 407 949 0726
amccaw@realvest.com

Stian Funk

O: 407 949 0747
sfunk@realvest.com

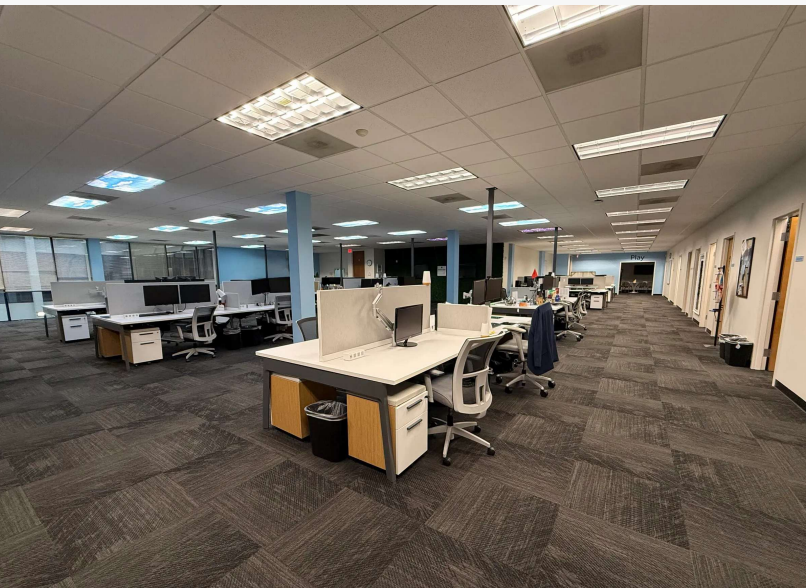
Property Photos



1st Floor Building Lobby



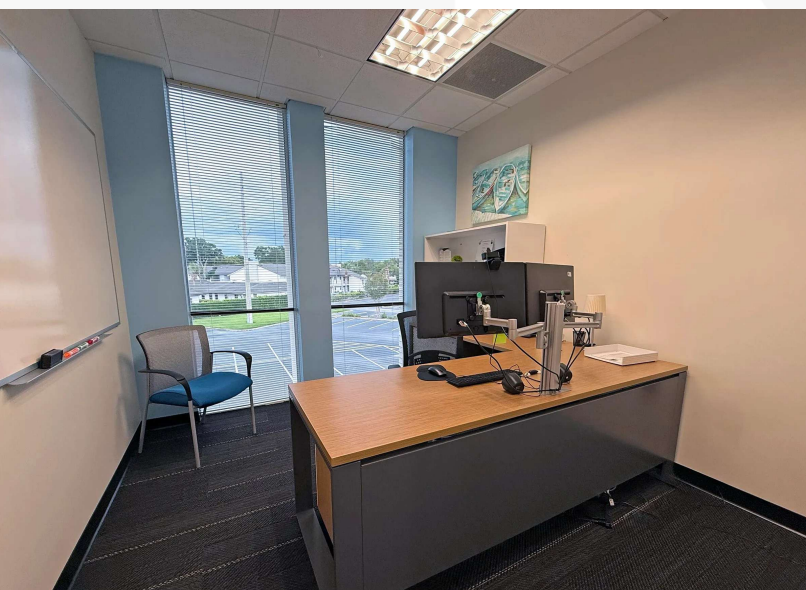
2nd Floor Building Lobby



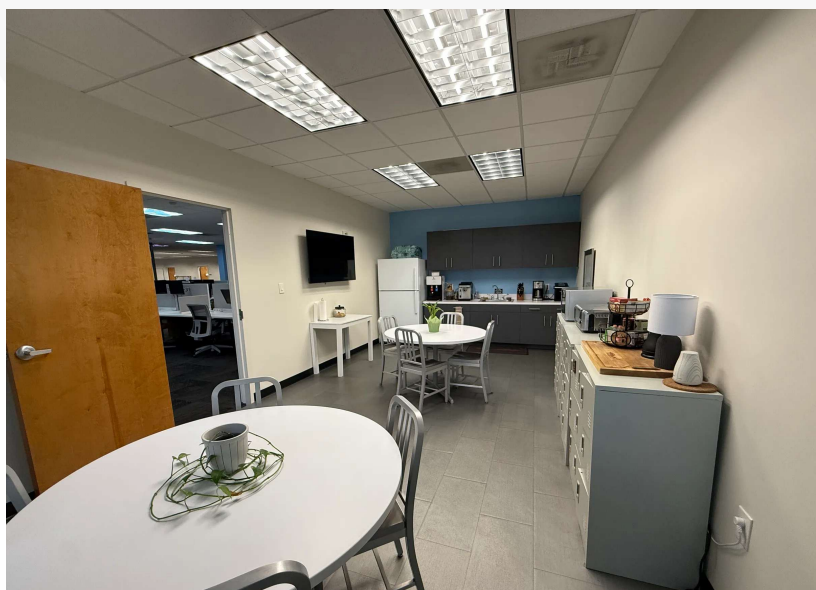
Open Work Area



Conference Room



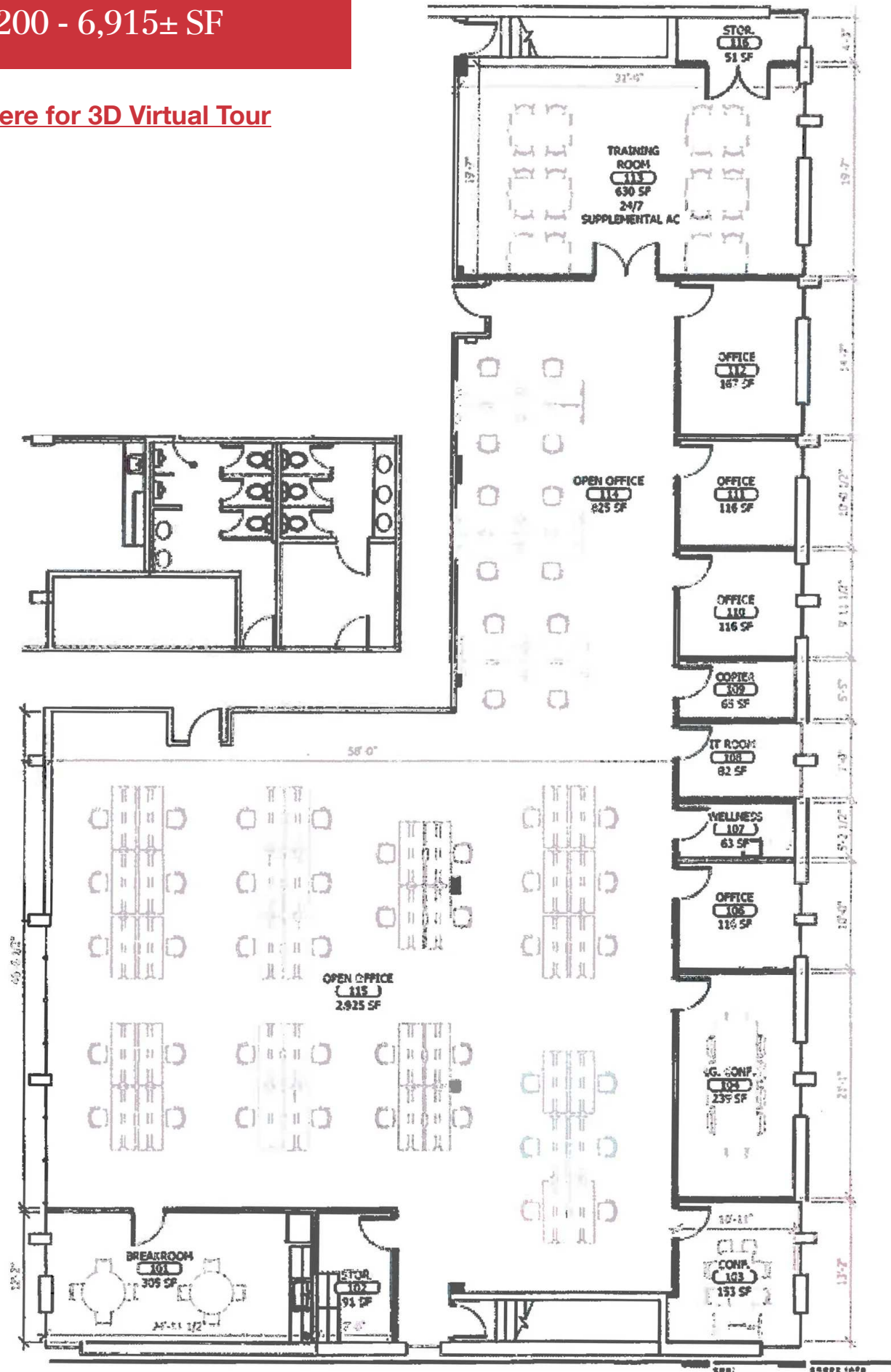
Typical Office



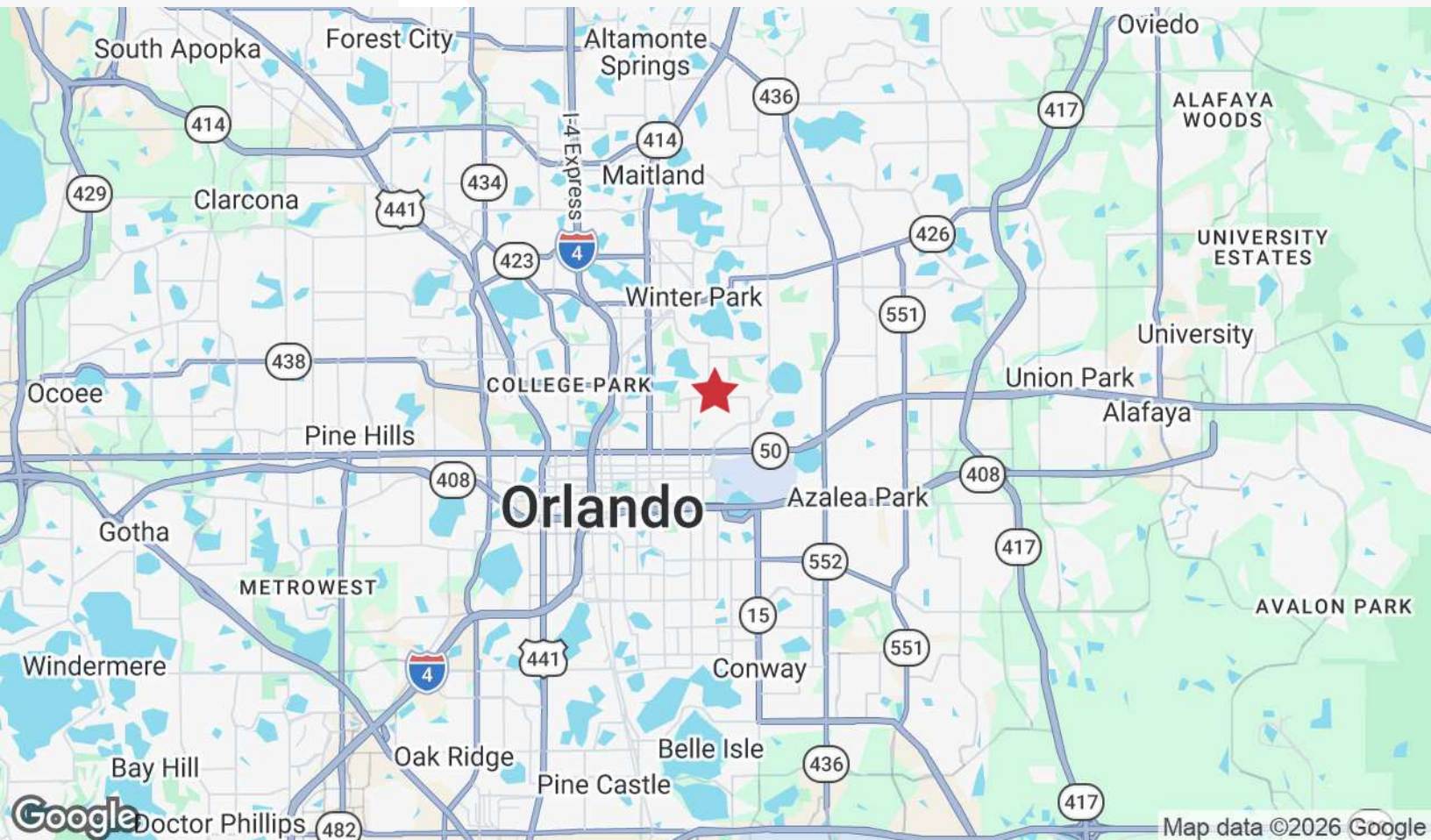
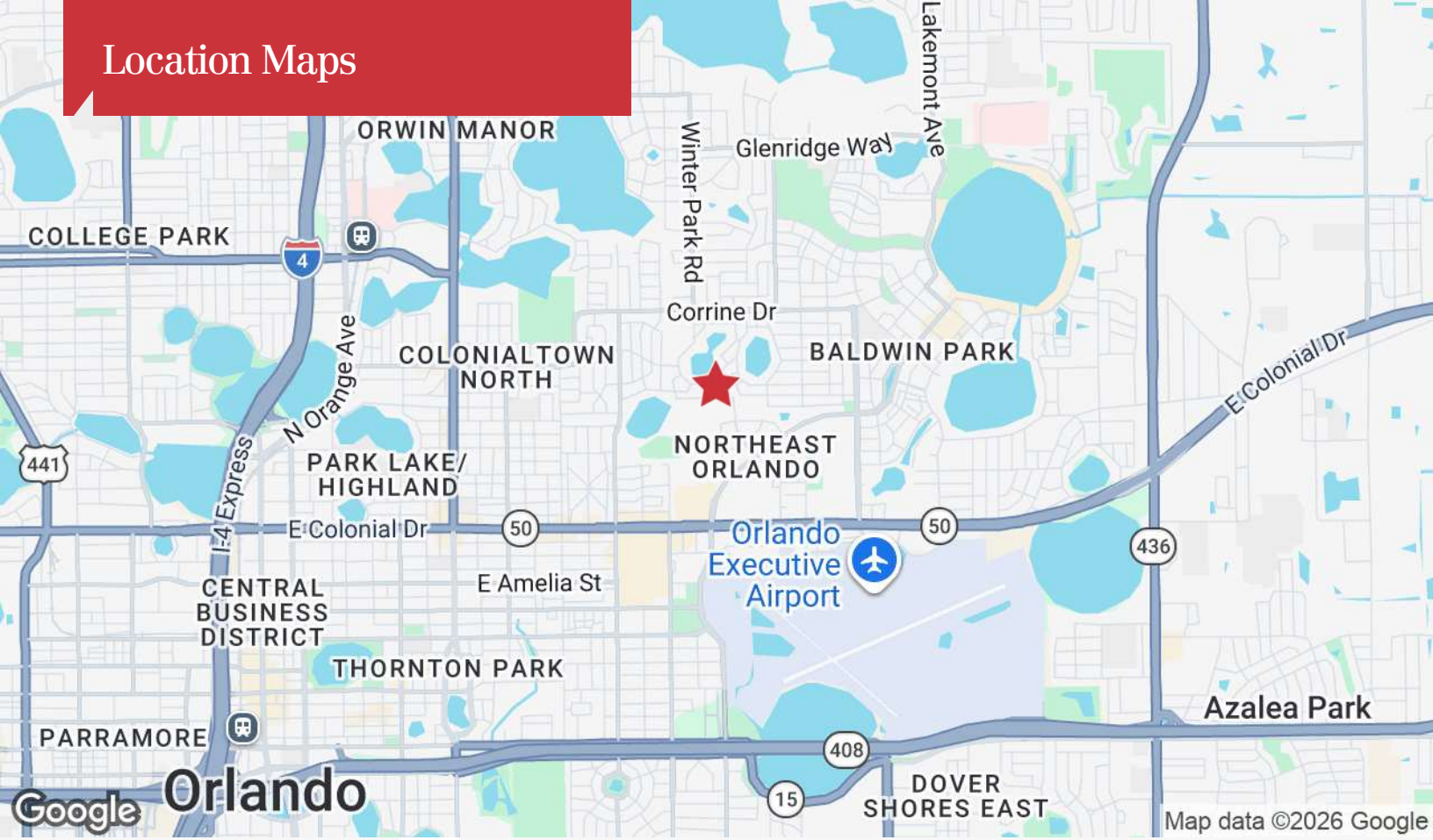
Break Room

Suite 200 - 6,915± SF

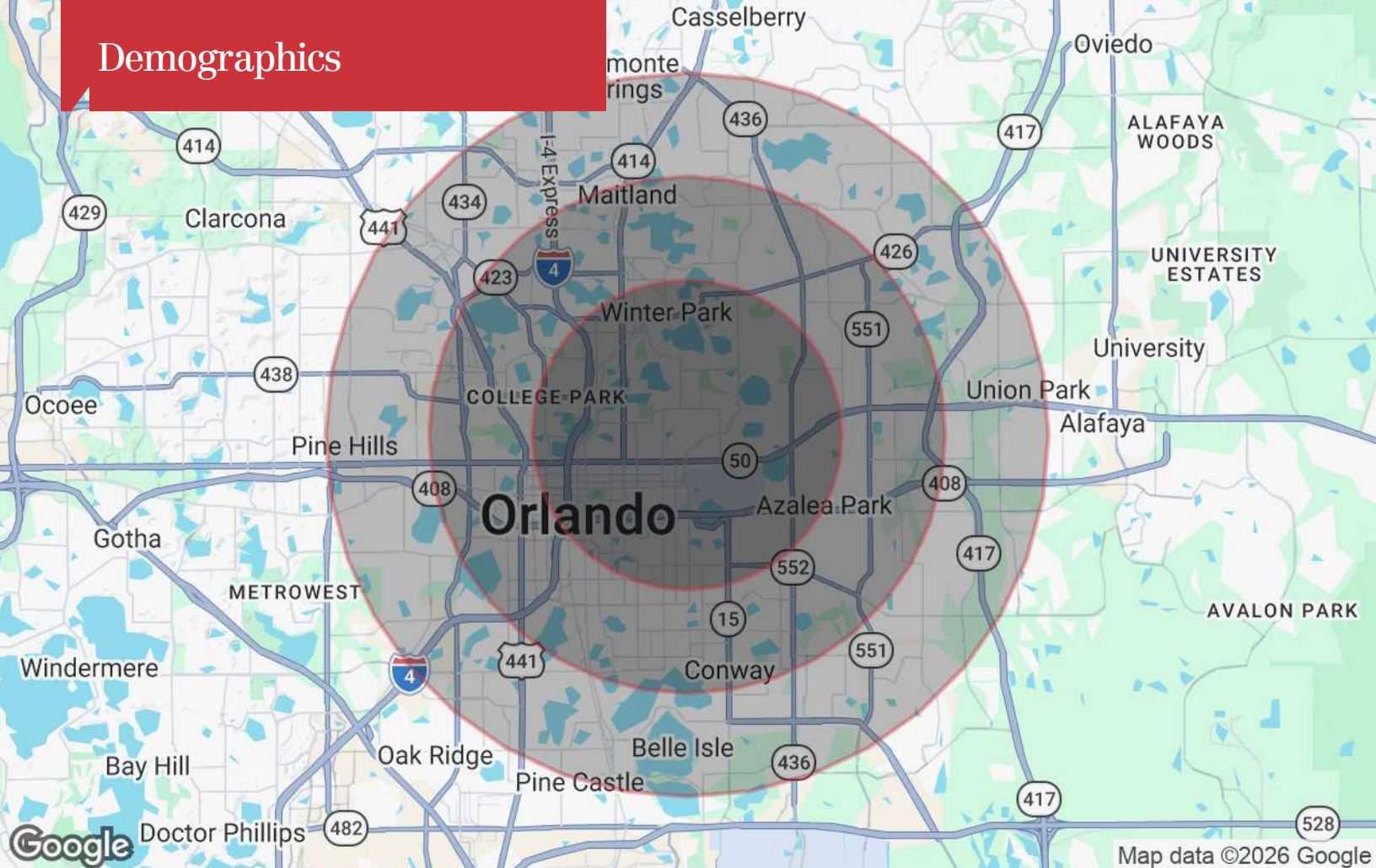
[Click Here for 3D Virtual Tour](#)



Location Maps



Demographics



	3 Miles	5 Miles	7 Miles
Population			
TOTAL POPULATION	113,072	300,302	578,404
MEDIAN AGE	38.6	38.9	38.4
MEDIAN AGE (MALE)	38.7	37.6	36.8
MEDIAN AGE (FEMALE)	39.2	40.1	39.6
Households & Income			
TOTAL HOUSEHOLDS	52,450	127,383	229,923
# OF PERSONS PER HH	2.2	2.4	2.5
AVERAGE HH INCOME	\$131,628	\$111,719	\$98,281
AVERAGE HOUSE VALUE	\$531,398	\$456,178	\$386,522

* Demographic data derived from 2020 ACS - US Census