

39161 N. Sheridan Road
Beach Park, IL 60099

SUBLEASE
Retail Space



EDGEMARK

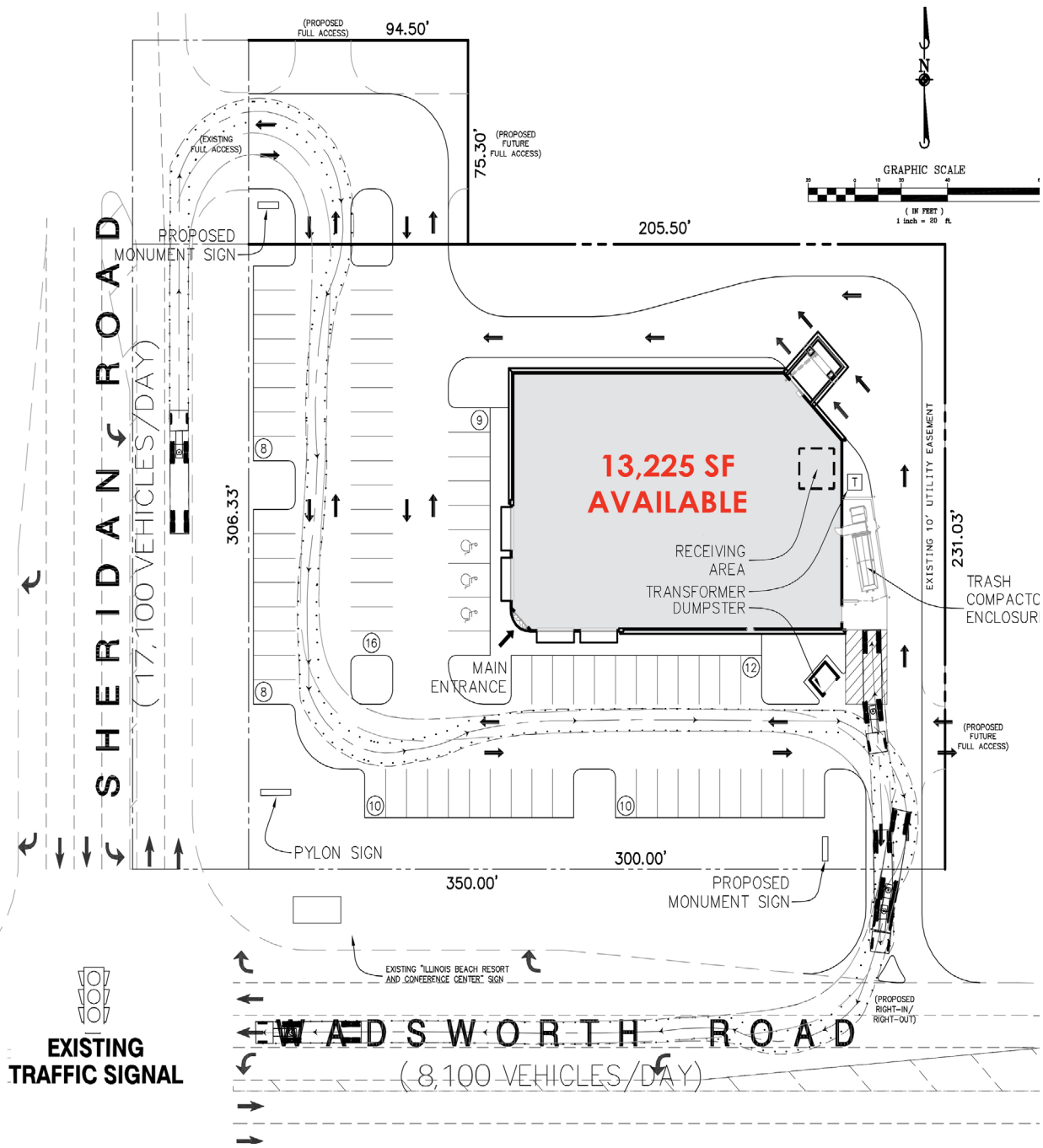
CONTACT
INFORMATION

MATT SMETANA
630.572.5632
msmetana@edgemarkllc.com

MIKE WESLEY
630.572.5610
mwesley@edgemarkllc.com

EDGEMARK COMMERCIAL REAL ESTATE SERVICES LLC
2215 York Road, Suite 210
Oak Brook, IL 60523
630.472.1010
www.edgemarkllc.com

SITE PLAN



SUBLEASE

39161 N. Sheridan Road
Beach Park, IL 60099

- **13,225 SF former CVS Space**
- Pylon Signage Available.
- Located at the intersection of Sheridan Rd. & Wadsworth Rd.
- Motivated, aggressive lease terms available.
- Existing Drive-Thru.

AREA RETAILERS



DEMOGRAPHICS

	1 MILE	3 MILE	5 MILE
POPULATION	8,866	44,173	107,602
AVG HH INCOME	\$82,002	\$100,808	\$101,765
DAYTIME POPULATION	800	6,748	20,357
TRAFFIC COUNTS	Sheridan Rd	17,100 VPD	
	Wadsworth Rd	8,100 VPD	