

17 RHODE ISLAND

WASHINGTON, DC



LEASING INFORMATION
202.513.6700

Lincoln

PROPERTY HIGHLIGHTS



Lobby and common areas recently renovated



Fitness facility with spa-like locker rooms



Executive conference center on the ground floor



Great view corridors and setbacks in all directions



Completely freestanding floor plate on all available floors!



VAV HVAC system



On-site parking 1/1,500 SF



Immediate access to Connecticut Avenue/Dupont Circle retail amenities



Metro access within two blocks at Farragut North and Dupont Circle stations

40,000 SF
TOP-DOWN OPPORTUNITY
ON FLOORS 8-10 WITH
EXCLUSIVE PRIVATE TERRACES!

AVAILABILITIES

SUITE 1000 - FULL FLOOR

11,929 SF

Available Immediately

SUITE 900 - FULL FLOOR

13,938 SF

Available Immediately

SUITE 800 - FULL FLOOR

15,182 SF

Available Immediately

SUITE 640

4,077 SF

Available Immediately

SUITE 630

3,865 SF

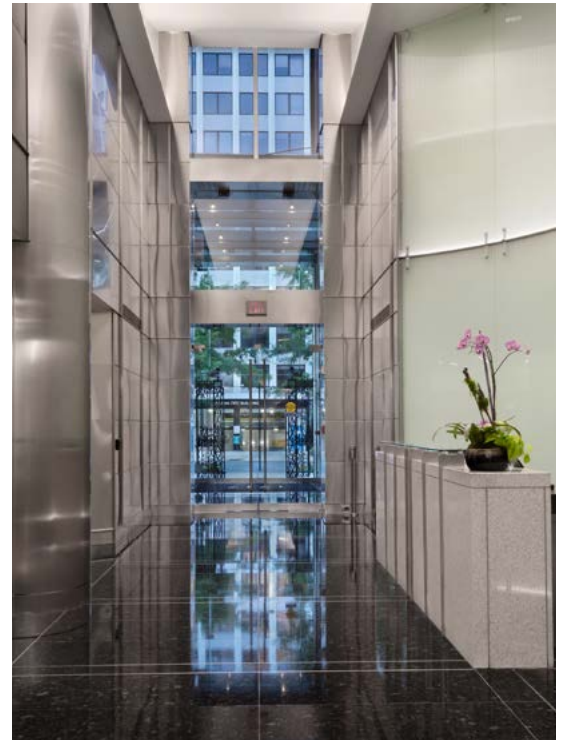
Available Immediately

SUITE 620

1,166 SF

Available Immediately

■ Common Area Photos

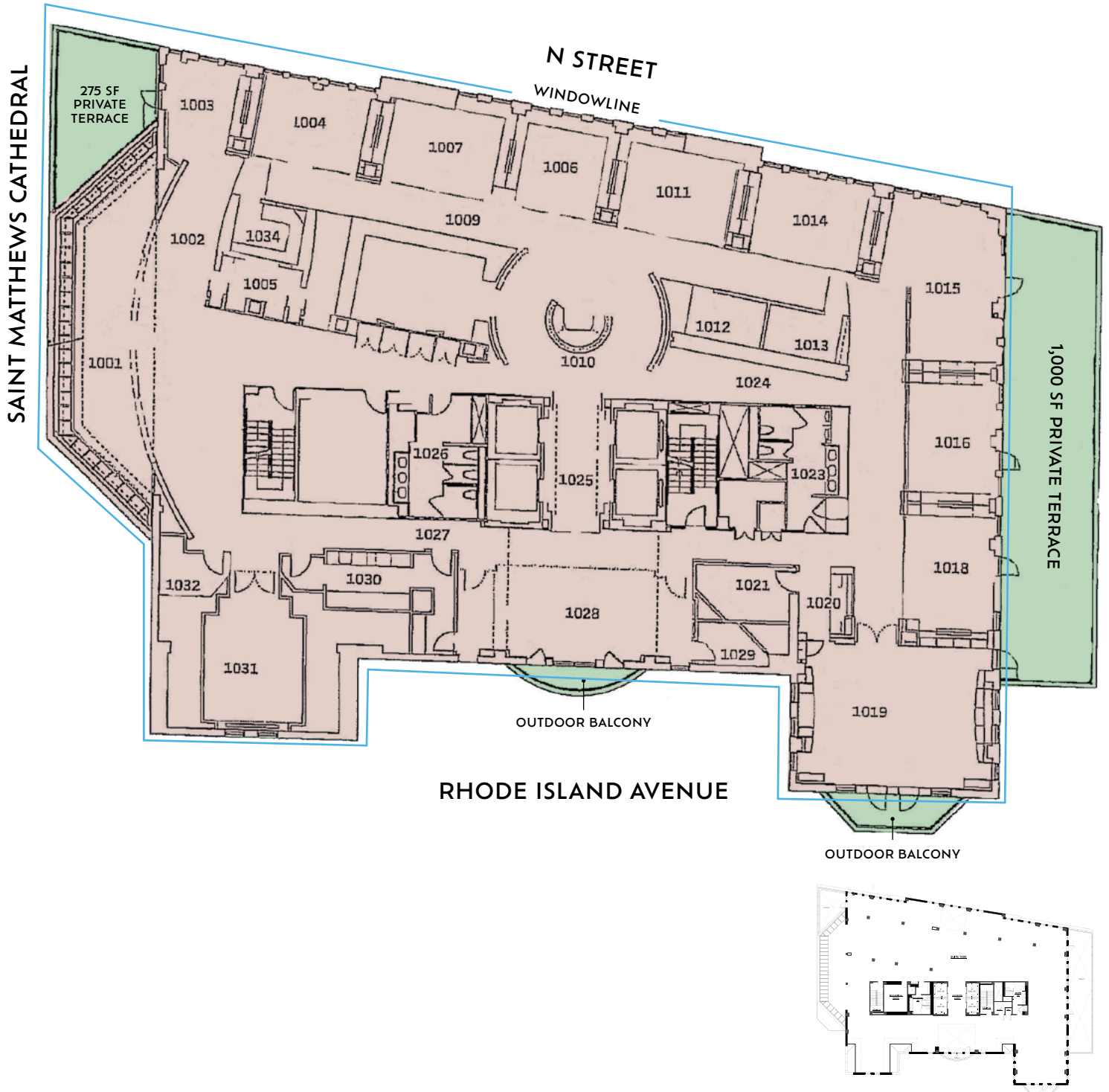


10th Floor

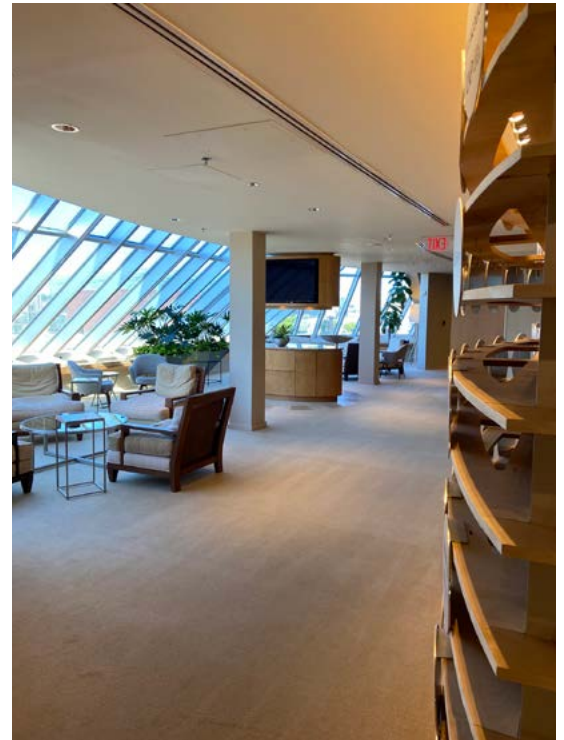
SUITE 1000

11,929 SF

Available Immediately



■ 10th Floor



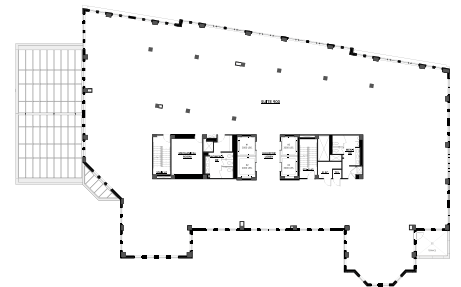
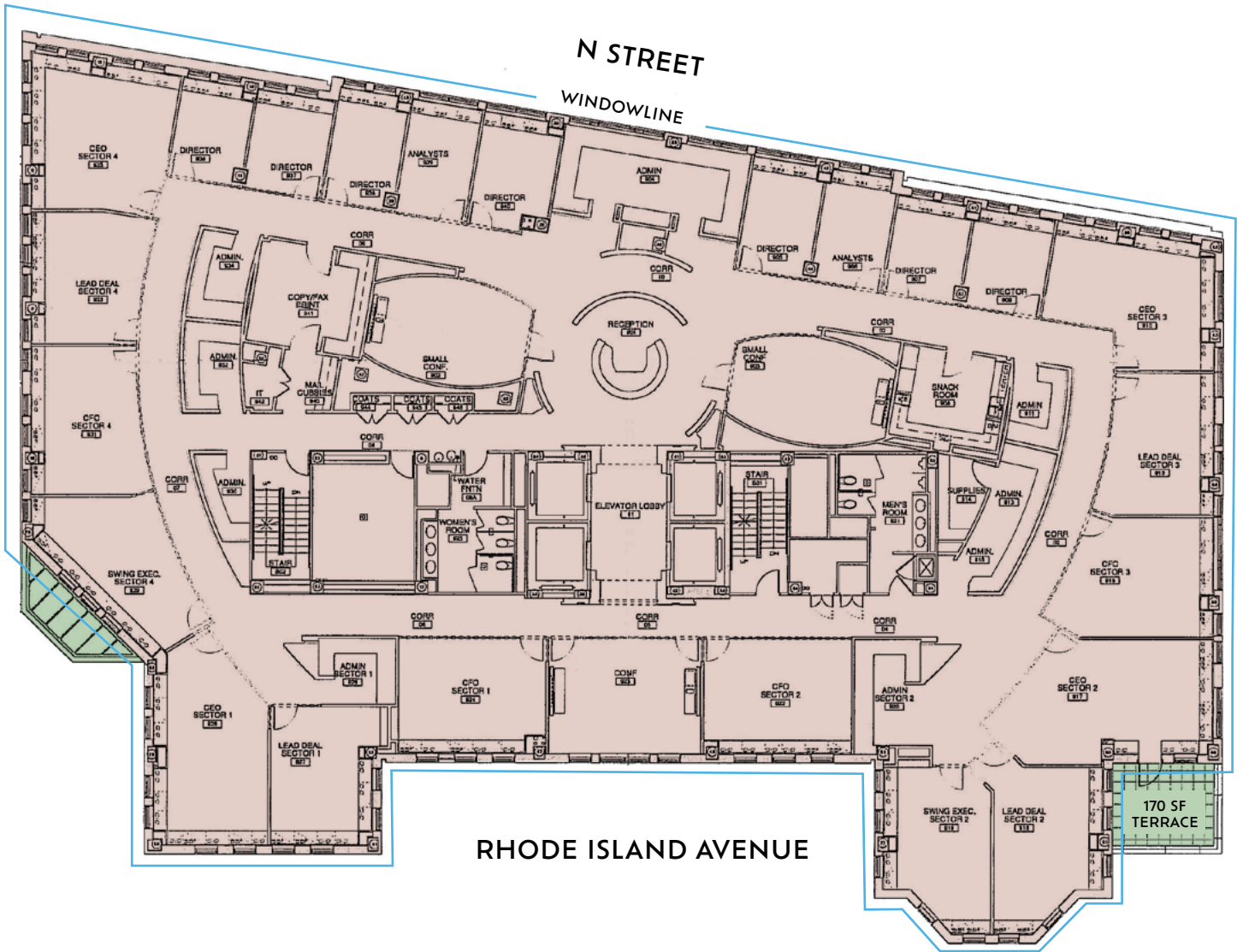
9th Floor

SUITE 900

13,938 SF

Available Immediately

SAINT MATTHEWS CATHEDRAL

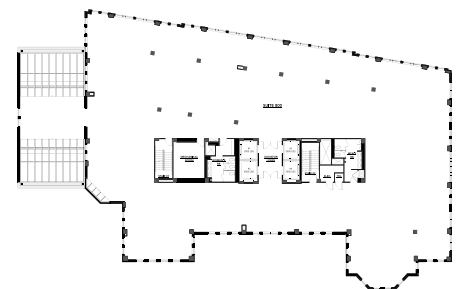


8th Floor

SUITE 800

15,131 SF

Available Immediately



6th Floor

SUITE 630
3,865 SF
Available Immediately

SUITE 620
1,166 SF
Available Immediately



SUITE 640
4,077 SF
Available Immediately





17 RHODE ISLAND

WASHINGTON, DC

Leasing Information: 202.513.6700

Merrill Turnbull
202.513.6713
mturnbull@lpc.com

Adam Biberaj
202.513.6736
abiberaj@lpc.com

Tim Whitebread
202.513.6712
twhitebread@lpc.com

Lincoln

101 Constitution Avenue, NW Suite 325 East
Washington, DC 20001
www.lpc.com

The information contained herein has been obtained through sources deemed reliable but neither Owner nor Lincoln Property Company makes guarantees, warranties or representations to its completeness or accuracy.