

# FOR LEASE

## DRUMHELLER BUILDING

21 W. ALDER ST. WALLA WALLA, WA



---

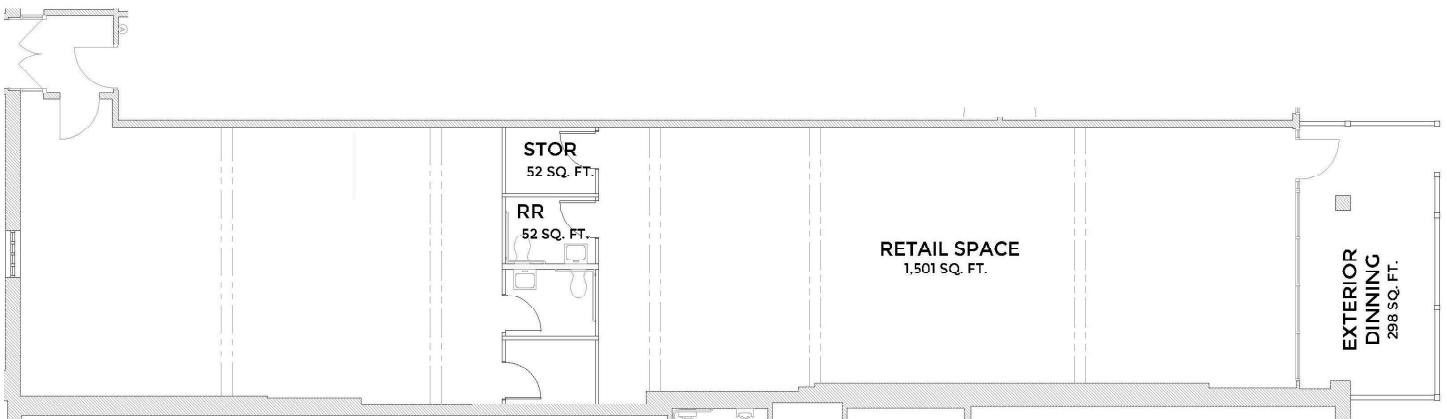
### Retail/Office Space in Historic Downtown Walla Walla 1,605 - 2,777 Sq. Ft. Space Available

---

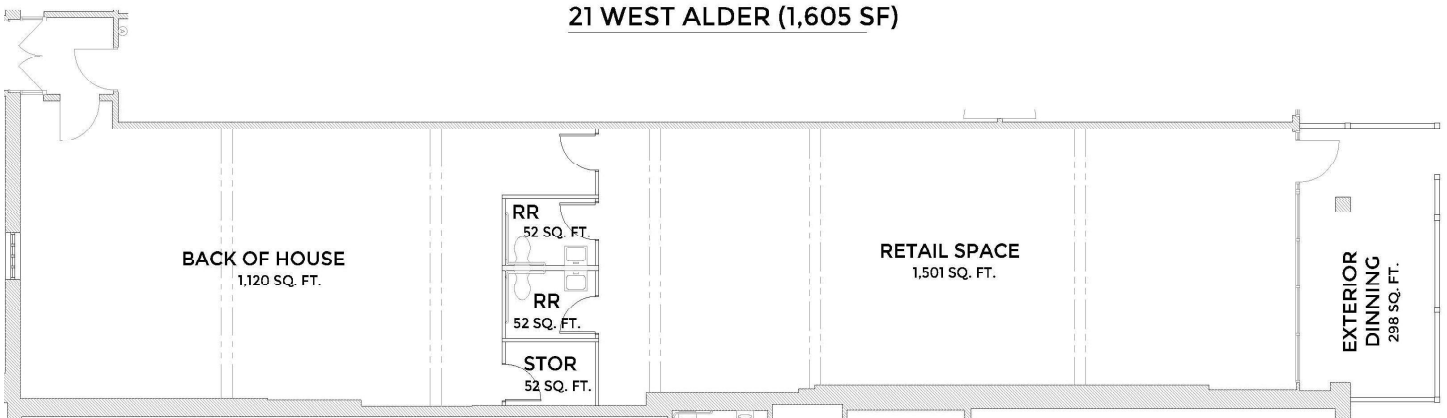
- Centrally Located Perfect for Retail, Restaurant or Tasting Room
- Storefront Facing Alder St.
- Lots of Foot Traffic on Busy Intersection
- Ample Parking - On-street 2-Hour Parking +1 Block From All Day Free Parking Lot
- Exposed Brick Walls, Concrete & Wood Floors
- New HVAC System
- Possibility for Outdoor Patio Seating

# FLOORPLANS

DEMISABLE TO 1,605 SQ. FT.



21 WEST ALDER (1,605 SF)



21 WEST ALDER (2,777 SF)