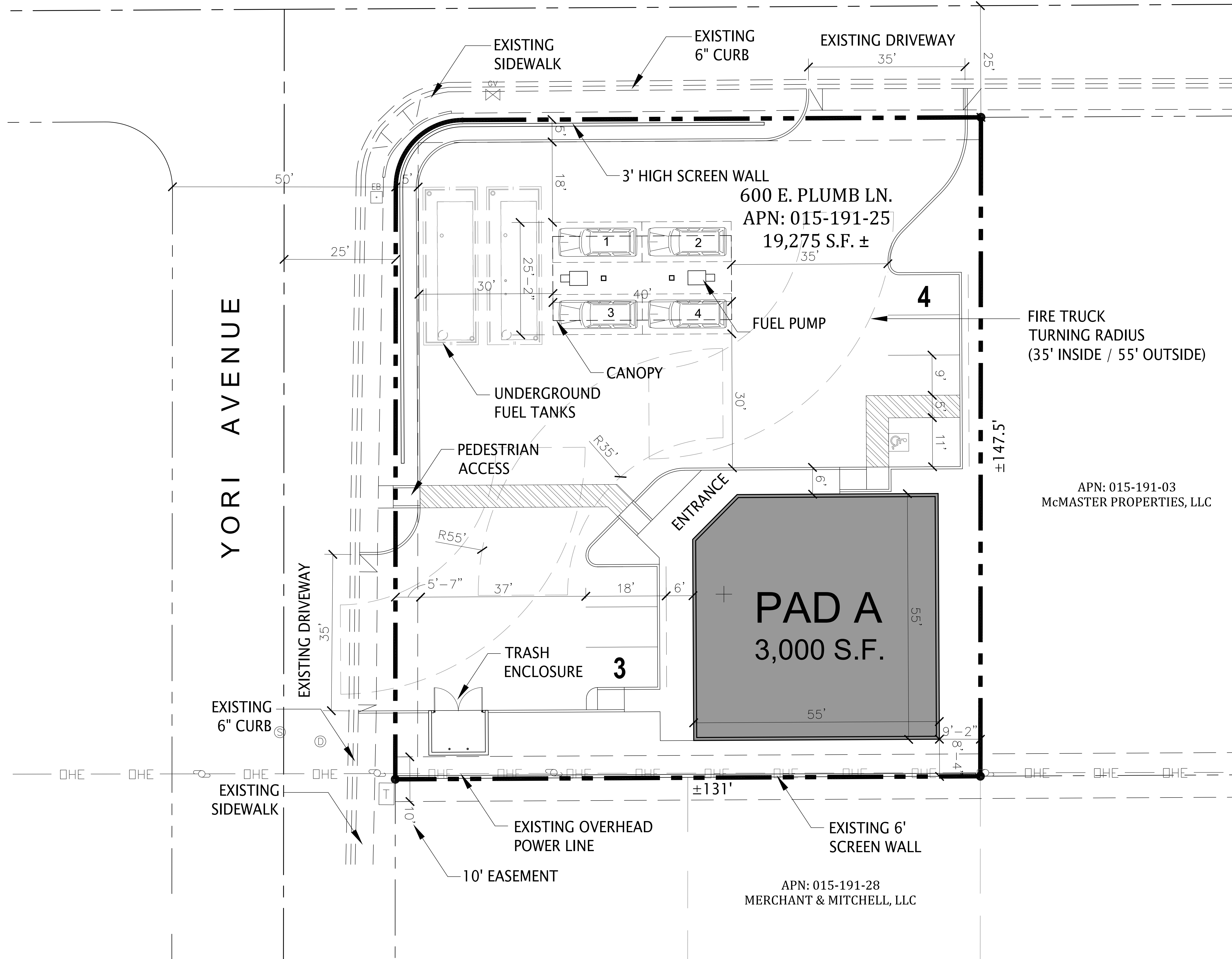


E. PLUMB LANE



site data

EXISTING ZONING:	COMMERCIAL
NET SITE AREA:	0.442 ACRES (19,275 S.F.)
PROPOSED USE:	GAS SERVICE & C-STORE
BUILDING AREA:	3,000 S.F.
PAD A:	3,000 S.F.
TOTAL BUILDING AREA:	15.6%
SITE COVERAGE:	
TOTAL PARKING REQUIRED:	10 SPACES
PAD A: GAS SERVICE & C-STORE (3,000 S.F.): 3,000 S.F. @ 1/300 = 10 SPACES	
TOTAL PARKING PROVIDED:	11 SPACES* (3.7/1000)
ACCESSIBLE SPACES REQUIRED:	1 SPACE
ACCESSIBLE SPACES PROVIDED:	1 SPACE

* INCLUDES PARKING AT FUEL PUMPS

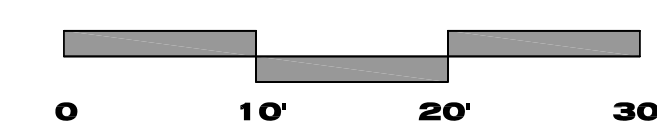
FIRE TRUCK
TURNING RADIUS
(35' INSIDE / 55' OUTSIDE)

APN: 015-191-03
McMASTER PROPERTIES, LLC

APN: 015-191-28
MERCHANT & MITCHELL, LLC

site plan

scale: 1" = 10'-0"



north

