



SPACE AVAILABLE

6480 Chupp Road

Suite B5 | Lithonia, GA 30058



FOR LEASE



PROPERTY HIGHLIGHTS

Total Size:	4,200 SF
Office:	1,981 SF
Warehouse:	2,219 SF
Loading:	One (1) Dock High Door
Clear Height:	17'
Available:	Immediately
Location:	Direct access to I-20



For more information, please contact:

RECE MOORE

Office: (404) 574-6311
Cell: (770) 861-8140
rmoore@apexindustrialre.com

BRYCE MCCAIN

Office: (404) 595-1552
Cell: (770) 845-3559
bmccain@apexindustrialre.com



Although the information contained therein was provided from sources believed to be reliable, Apex Industrial makes no representation, expressed or implied, as to its accuracy and said information is subject to errors, omissions or changes.



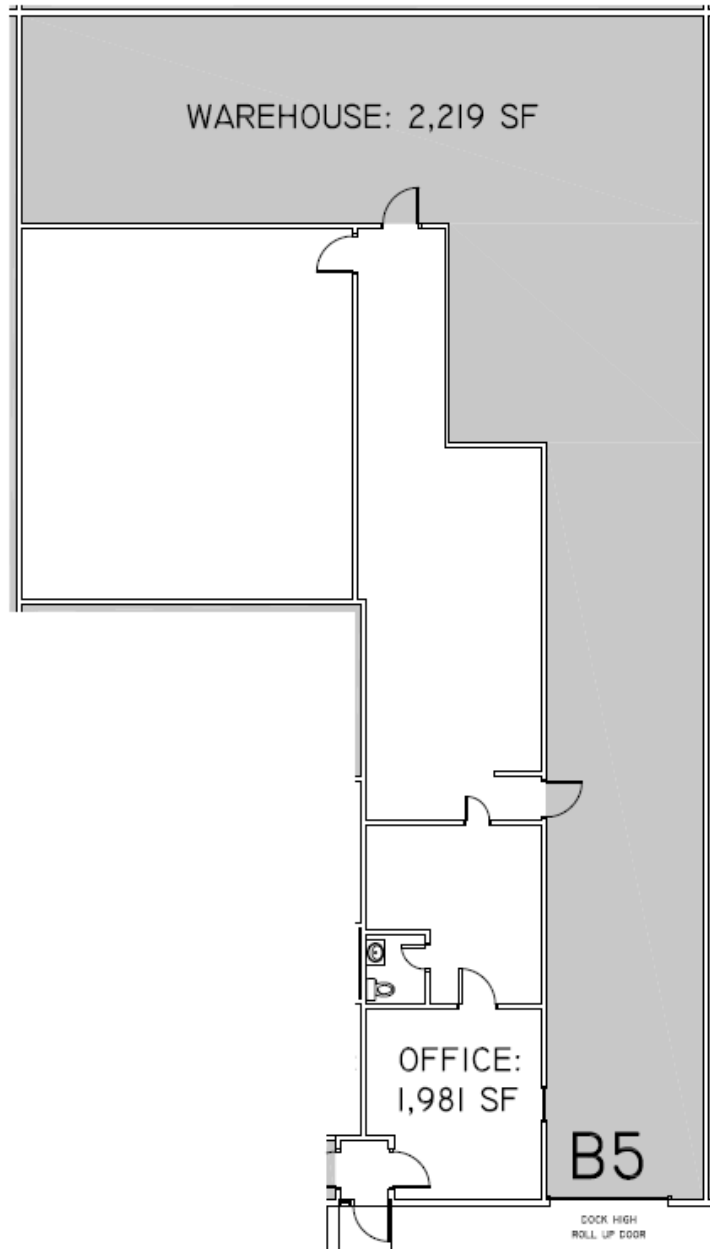
SPACE AVAILABLE

6480 Chupp Road

Suite B5 | Lithonia, GA 30058



FLOOR PLAN



For more information, please contact:

RECE MOORE

Office: (404) 574-6311
Cell: (770) 861-8140
rmoore@apexindustrialre.com

BRYCE MCCAIN

Office: (404) 595-1552
Cell: (770) 845-3559
bmccain@apexindustrialre.com



Although the information contained therein was provided from sources believed to be reliable, Apex Industrial makes no representation, expressed or implied, as to its accuracy and said information is subject to errors, omissions or changes.