

FOR LEASE

# WESTON BUSINESS PARK

1704-1708 N. Commerce Parkway, Weston, FL



Immediate Availability



## Space Available

Suite Number	Square Footage
Suite 1704-1708	4,000 SF

## Property Highlights

- 20' clear ceiling heights
- 2 grade level doors
- 1:1000 parking
- Built in 2009
- 3,170 SF of office space
- 830 SF of warehouse space
- Three phase electric



## Contact

Matthew G. McAllister, SIOR  
Executive Director  
+1 561 227 2018  
[matthew.mcallister@cushwake.com](mailto:matthew.mcallister@cushwake.com)

Eric Cantor  
Senior Associate  
+1 561 227 2068  
[Eric.cantor@cushwake.com](mailto:Eric.cantor@cushwake.com)

## Owner

maple<sup>tree</sup>

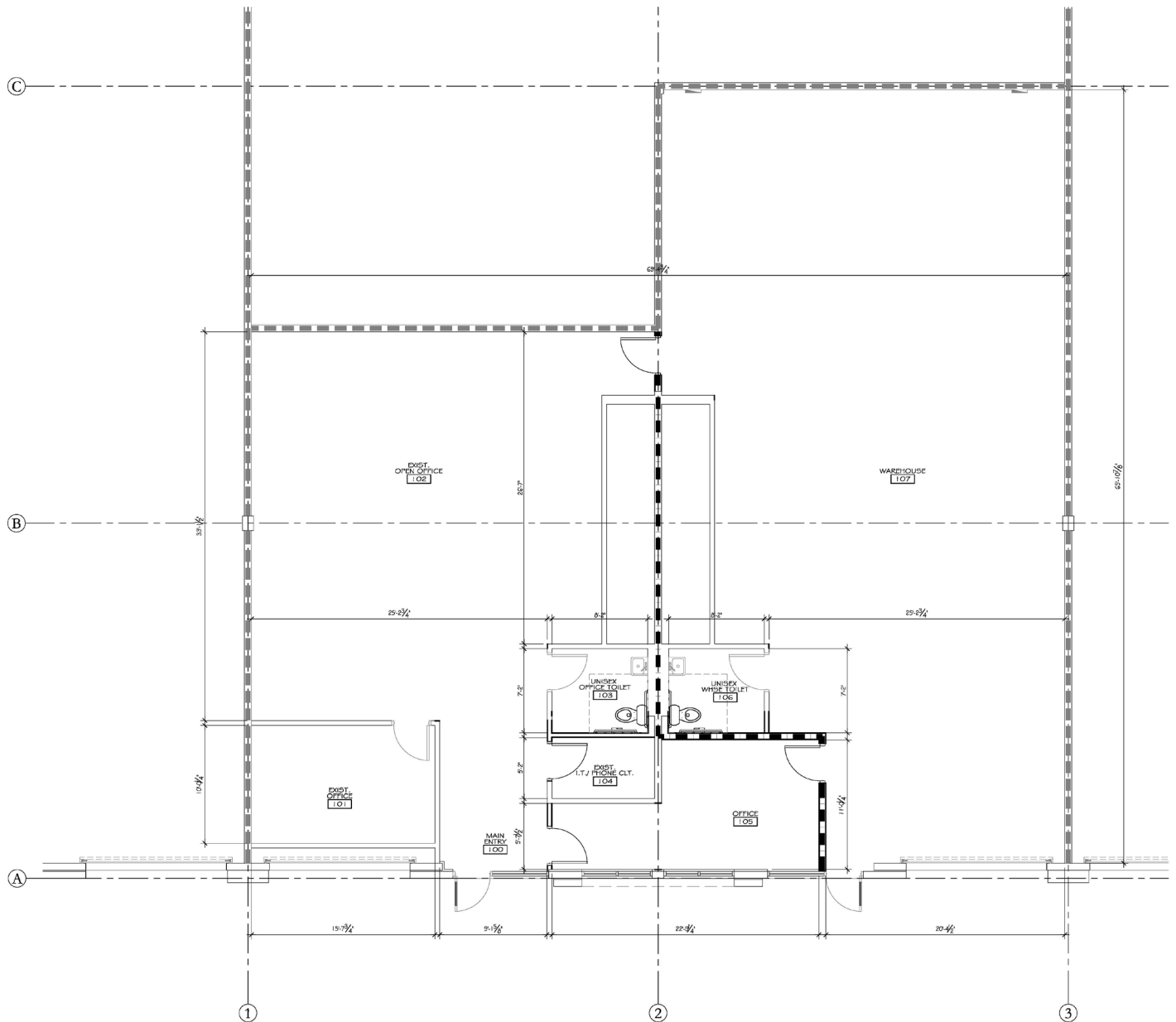
FOR LEASE

# WESTON BUSINESS PARK

1704-1708 N. Commerce Parkway, Weston, FL



## Floor Plan



### Contact

Matthew G. McAllister, SIOR  
Executive Director  
+1 561 227 2018  
[matthew.mcallister@cushwake.com](mailto:matthew.mcallister@cushwake.com)

Eric Cantor  
Senior Associate  
+1 561 227 2068  
[Eric.cantor@cushwake.com](mailto:Eric.cantor@cushwake.com)

### Owner

