

MODAA LOFTS

8601-8635 Washington Boulevard, Culver City, CA



PROPERTY DETAILS

PREMISES	8609 Washington (1st floor): 12,700 SF 8631 Washington (1st floor): 2,300 SF 8633 Washington (2nd floor): 4,000 SF
RENT	8609 Washington (1st floor): \$4.95/SF, MG 8631 Washington (1st floor): \$4.95/SF, MG 8633 Washington (2nd floor): \$3.95/SF, MG
TERM	2-5 years
OCCUPANCY	8609 Washington (1st floor): <i>Within 90-120 Days</i> 8631 Washington (1st floor): <i>Available Now</i> 8633 Washington (2nd floor): <i>Available Now</i>
PARKING	3/1000 at \$175/car/month
FEATURES	<ul style="list-style-type: none">• 21' ceilings• Operable windows• Concrete floors• Abundant natural light• Secure parking• Full kitchen in every unit• 90 Walk score• Walking distance to Helms bakery, Platform, Ivy Station• 5 minutes to 10 freeway



PHOTOS



PHOTOS

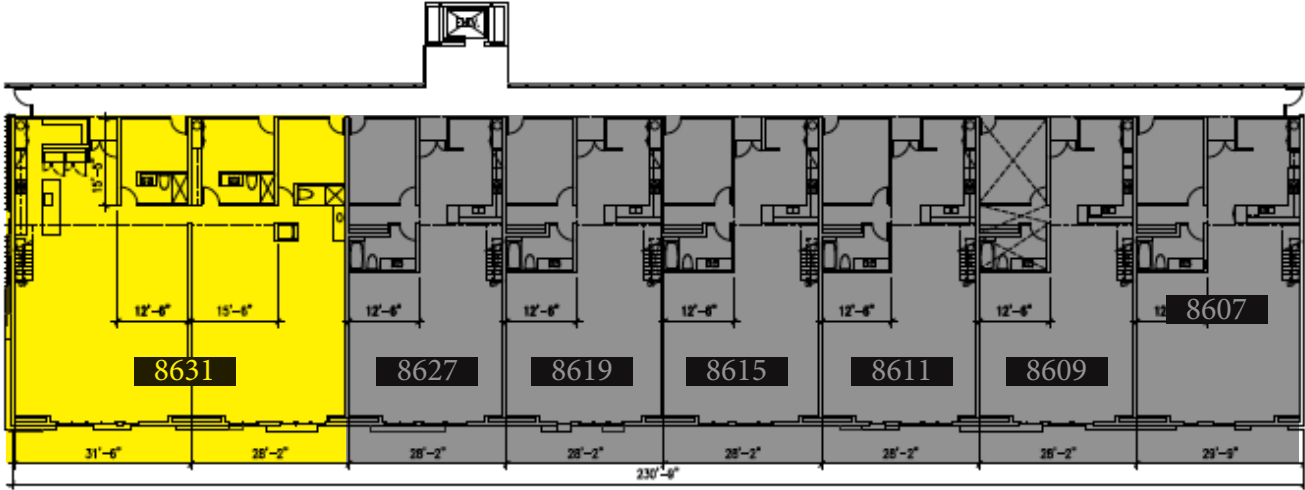


FLOOR PLANS

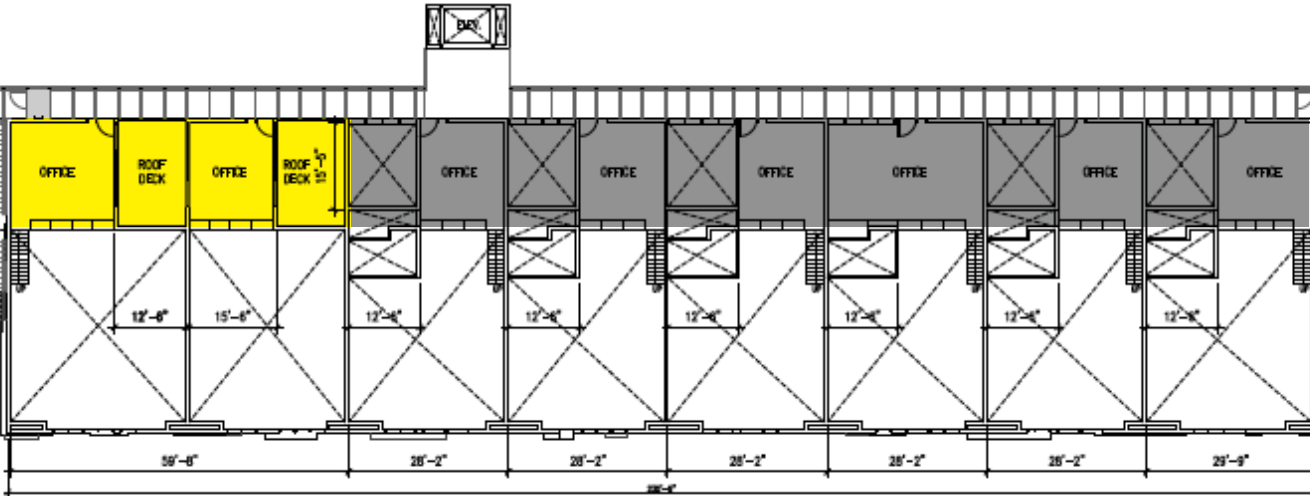
SECOND FLOOR

8631 Washington:

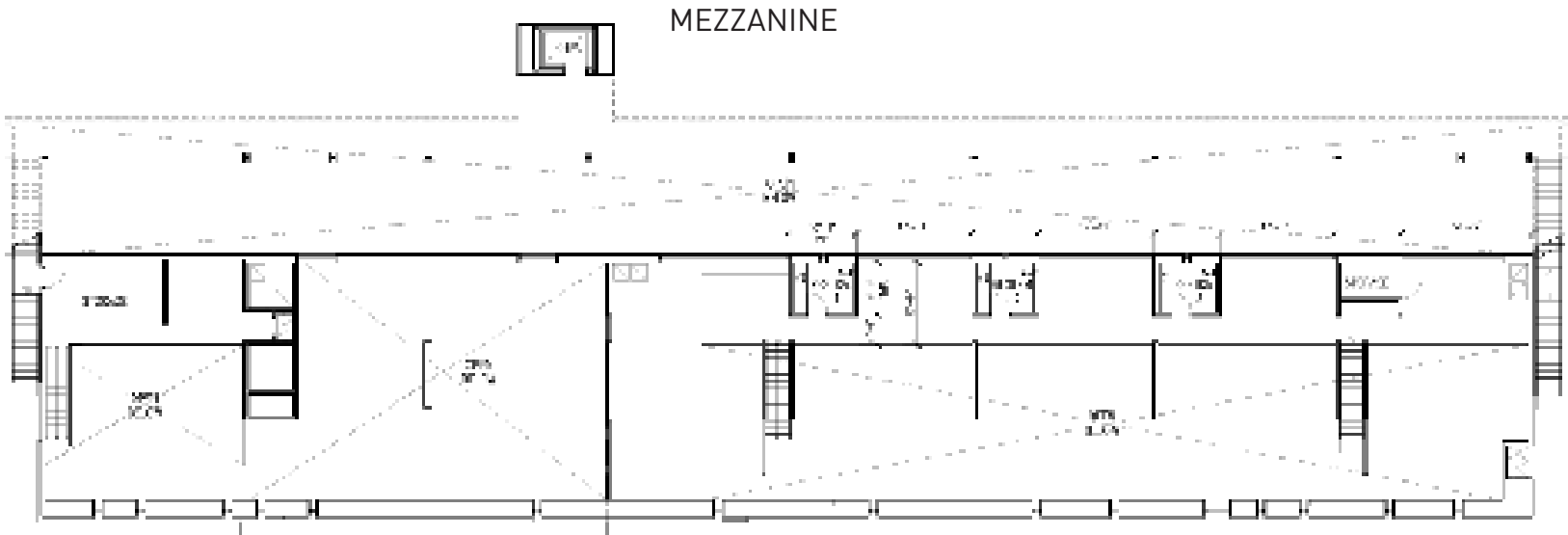
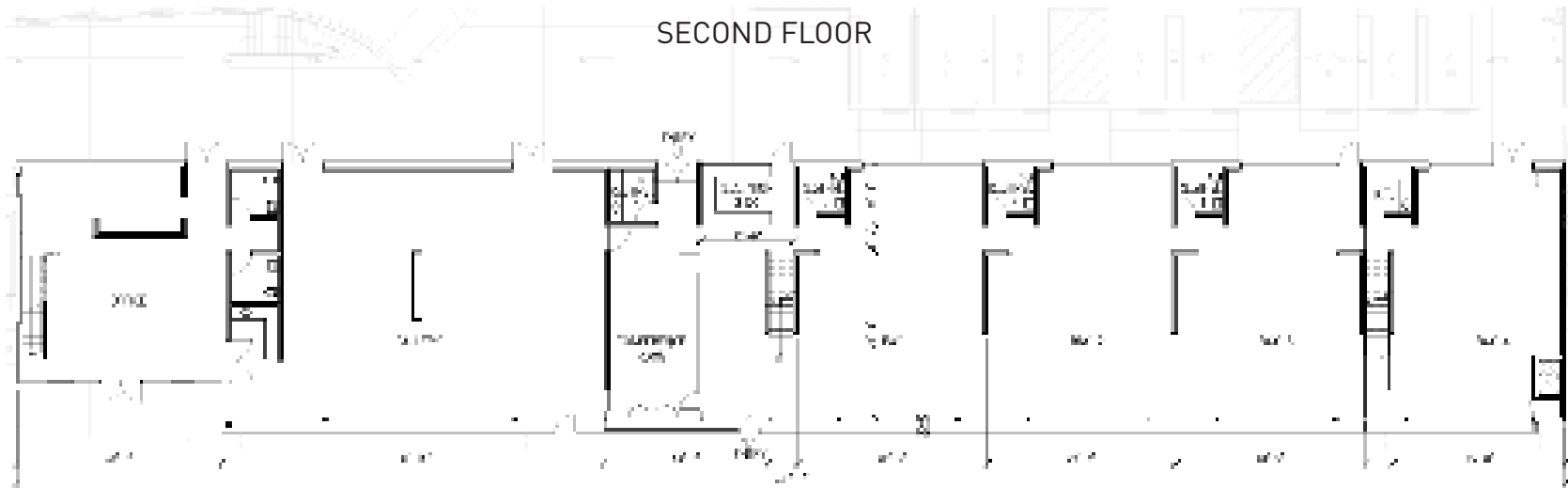
- 3 private offices, 3 restrooms, full kitchen, mezzanine office and 2 patios



MEZZANINE

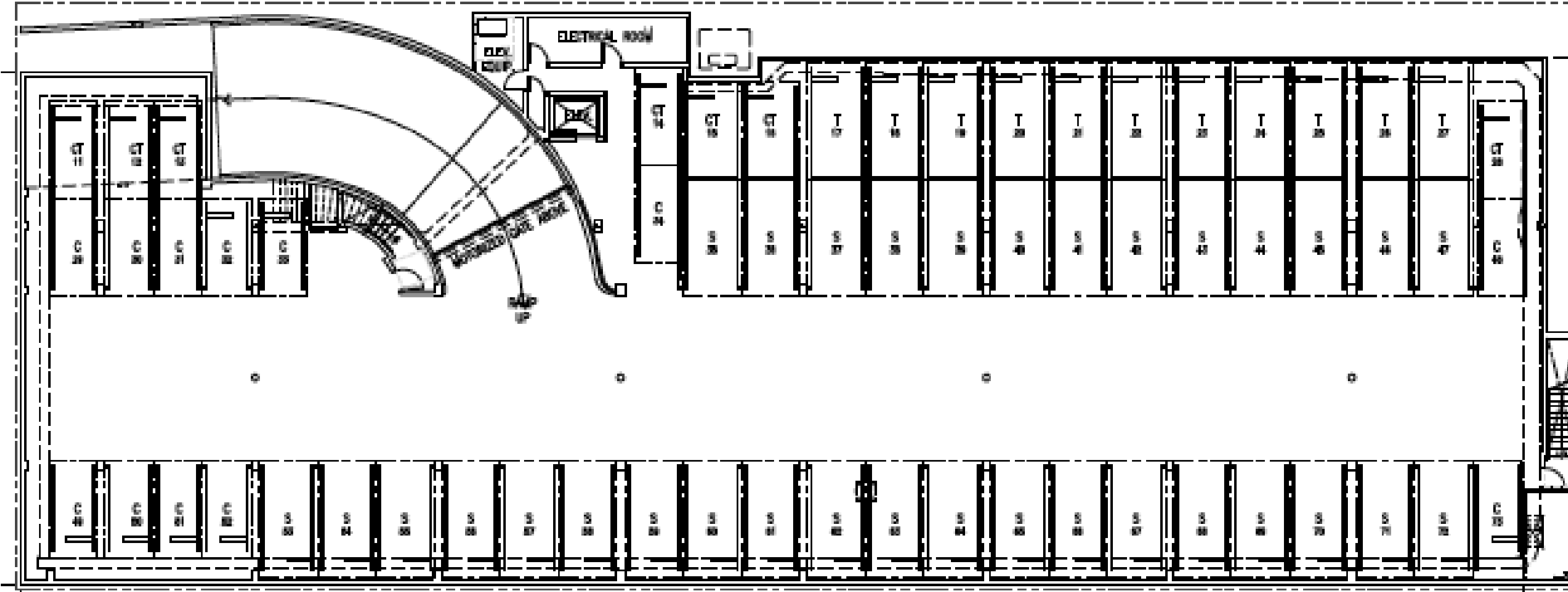


FLOOR PLAN - 8609 WASHINGTON (1st floor): 12,700 SF



PARKING

PARKING



NEIGHBORHOOD TENANTS





Tibor Lody, SIOR

Principal

310.899.2720

tlody@leewestla.com

AGT DRE 01261129



Aleks Trifunovic, SIOR

Principal

310.899.2721

atrifunovic@leewestla.com

BKR DRE 01363109



Adam Levine

Senior Associate

310.899.2703

alevine@leewestla.com

AGT DRE 02104830



Tommy Isola

Principal

310.899.2709

tisola@leewestla.com

AGT DRE 01974024



Keith Fielding

Principal

310.899.2719

kfielding@leewestla.com

AGT DRE 01729915