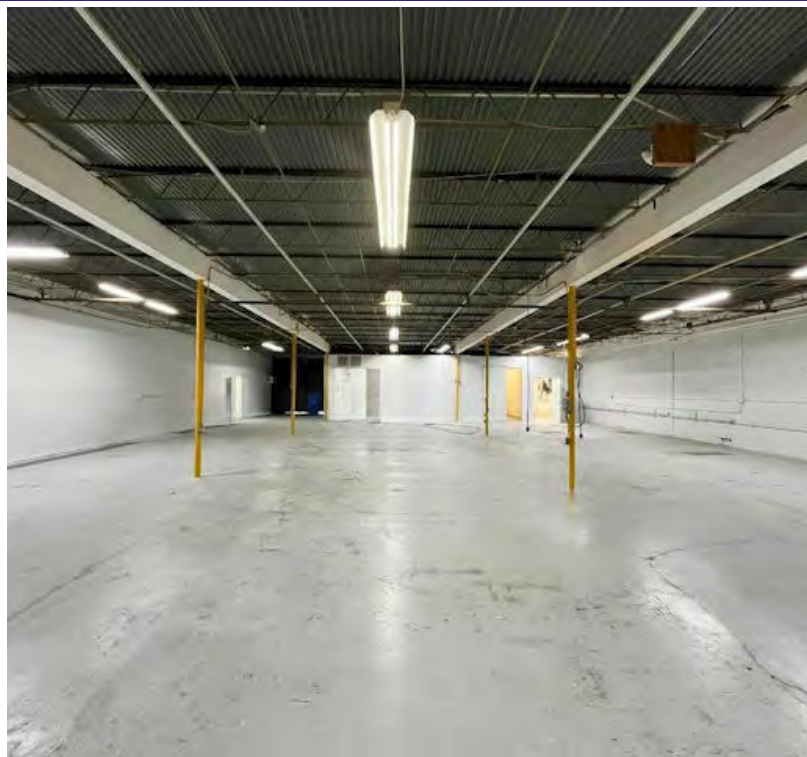


TAYLOR CREEK

511-545 NE 32ND STREET, OAKLAND PARK, FL 33334

3200B NE 5TH AVE



SPACE HIGHLIGHTS

- 6,134 SF
- 1,434 SF air-conditioned offices
- Newly renovated
- Fully sprinklered bay
- Permitted furniture spray booth
- Heavy 3 phase electric
- LED Lighting
- 18' x 10' front grade level overhead door
- 10' x 10' rear grade level overhead door
- Shower facilities
- 11' clear ceiling in warehouse



ANGIE WEAVER

Lauderdale Lakes and Lauderhill Manager
Direct: 954.485.9200 | Cell: 917.645.2339
angie@levyrai.com

HALEY PRESSER

Property Manager / Sales Associate
Direct: 954.485.9200 | Cell: 954.254.5396
Haley@levyrai.com

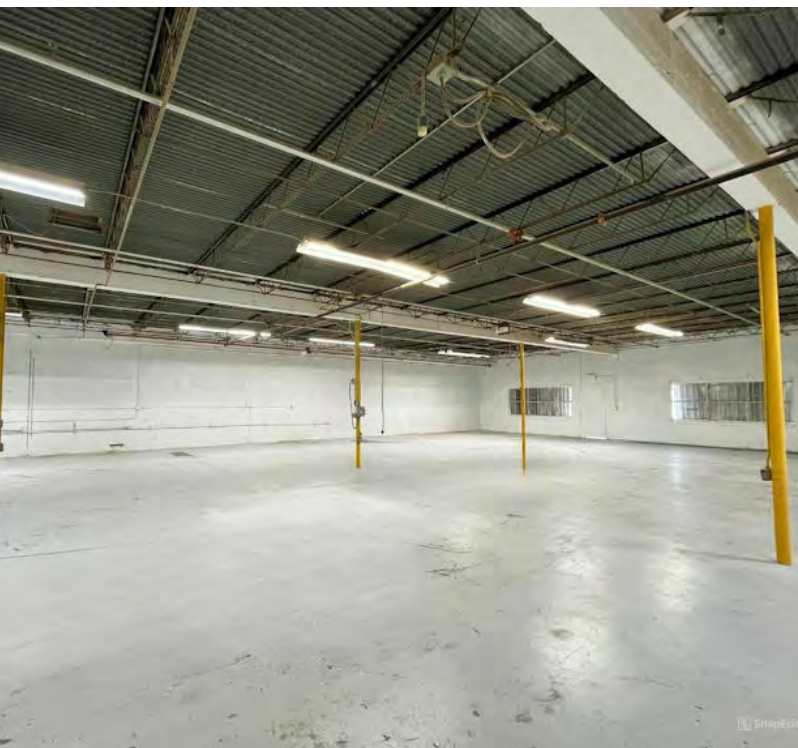


FOR LEASE

TAYLOR CREEK

511-545 NE 32ND STREET, OAKLAND PARK, FL 33334

3200B NE 5TH AVE ADDITIONAL PHOTOS



ANGIE WEAVER

Lauderdale Lakes and Lauderdale Manager
Direct: 954.485.9200 | Cell: 917.645.2339
angie@levyrai.com

HALEY PRESSER

Property Manager / Sales Associate
Direct: 954.485.9200 | Cell: 954.254.5396
Haley@levyrai.com

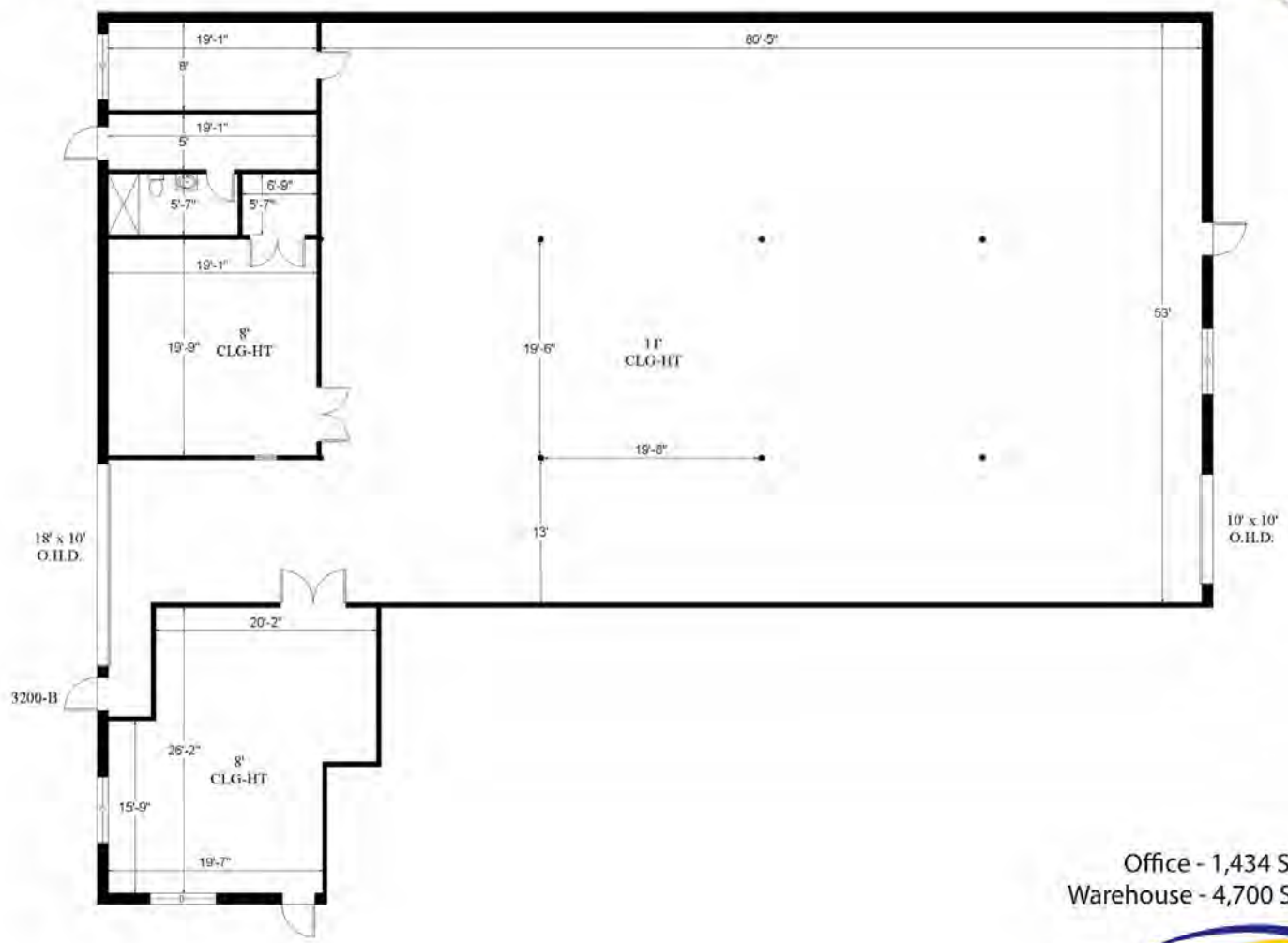


TAYLOR CREEK

511-545 NE 32ND STREET, OAKLAND PARK, FL 33334

TAYLOR CREEK

3200-B NE 5th Ave, Oakland Park



Office - 1,434 Sq. Ft.
Warehouse - 4,700 Sq. Ft.

6,134 Rentable Sq. Ft.
www.LevyRealtyAdvisors.com

ANGIE WEAVER
Lauderdale Lakes and Lauderdale Manager
Direct: 954.485.9200 | Cell: 917.645.2339
angie@levyrai.com

HALEY PRESSER
Property Manager / Sales Associate
Direct: 954.485.9200 | Cell: 954.254.5396
Haley@levyrai.com

