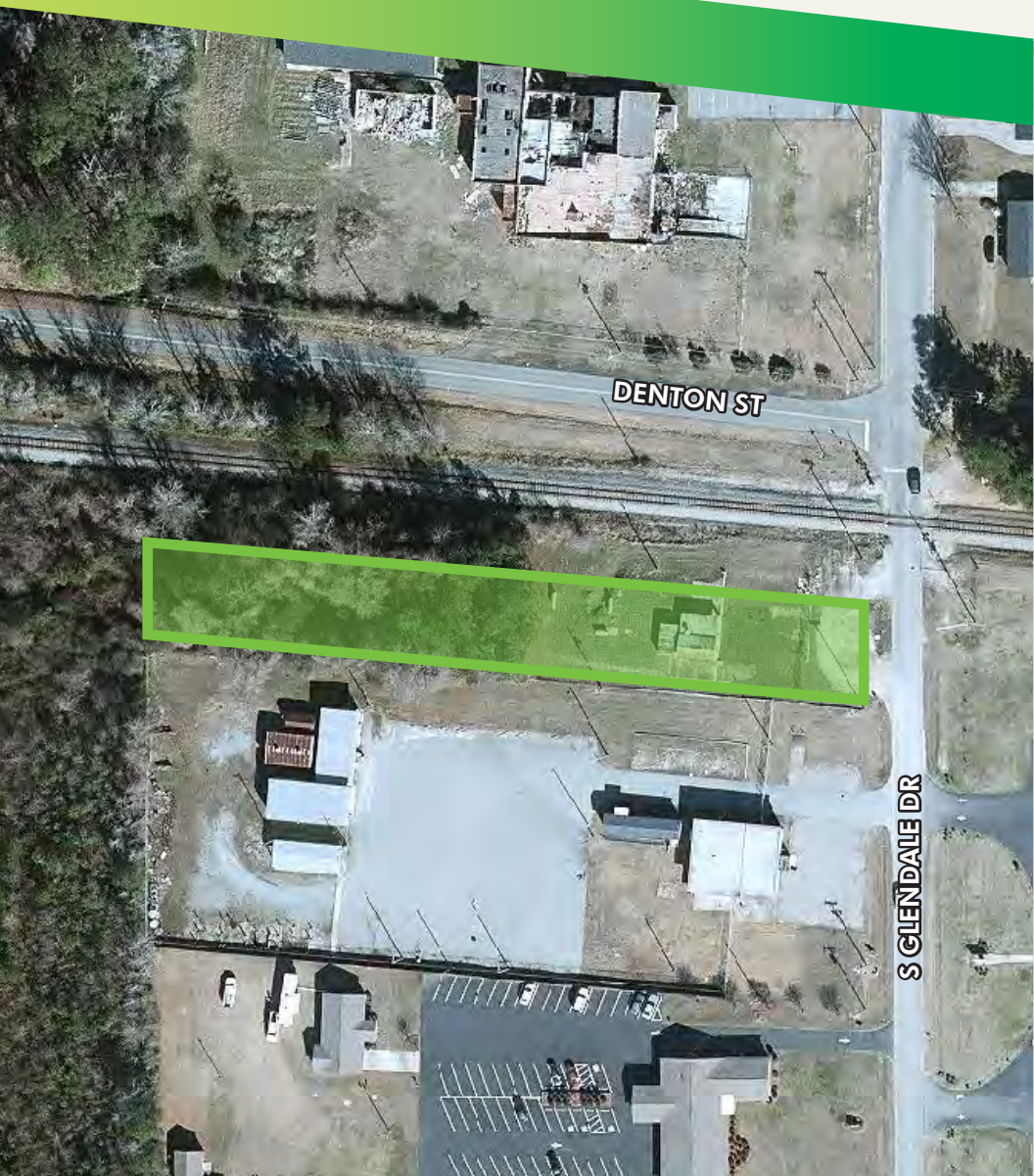


FOR SALE

204 S. GLENDALE DRIVE

Rocky Mount, NC 27801



PROPERTY OVERVIEW

- + Parcel Size: 0.71 Acres
- + Parcel ID #: 376944233300
- + County: Edgecomb County
- + Land Use: Industrial (I-2)
- + Tax Value: \$20,500 land value; \$7,528 improvement value
– \$28,028 total value
- + Nearby Highways: US-64 Highway, US-301 Highway, I-95
- + Above ground propane storage tanks to be removed
- + **SALE PRICE: \$31,000.00**

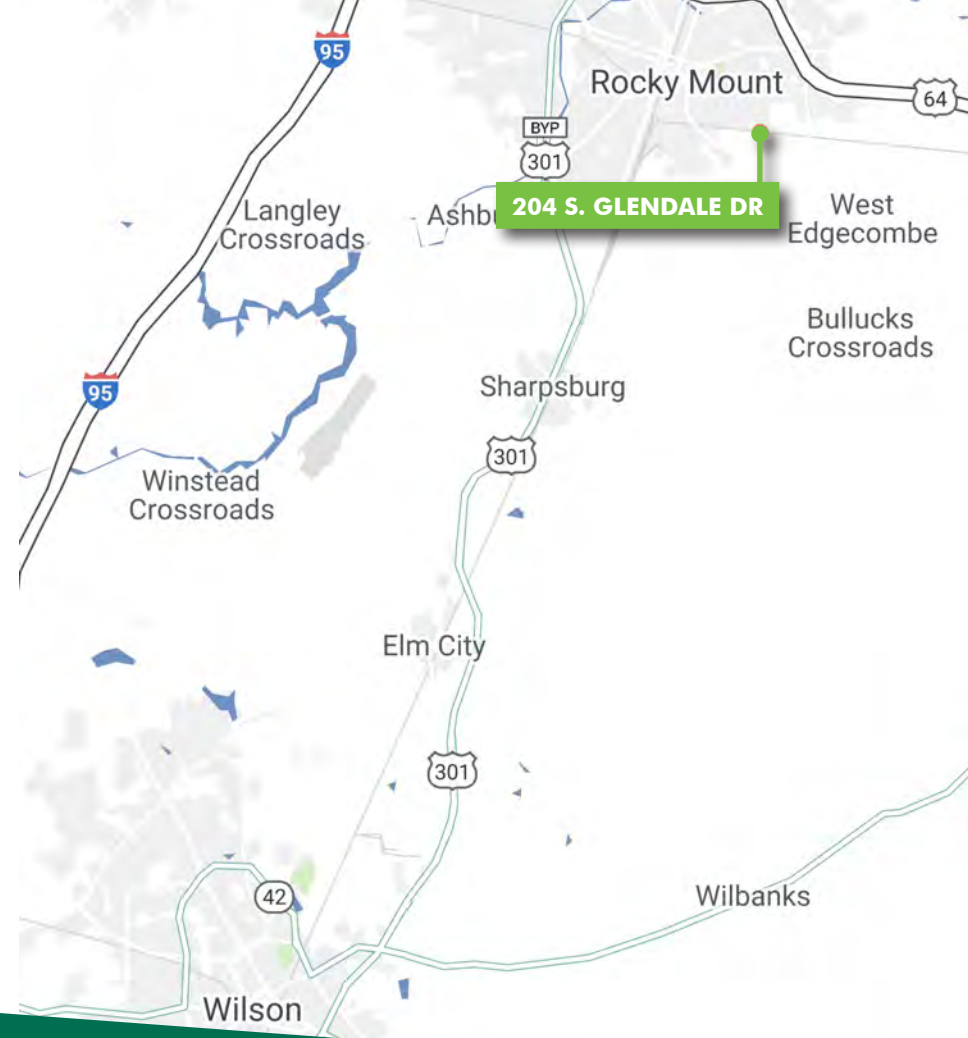
AREA DRIVE TIMES

US-64 Highway	4.0 Miles
US-301 Highway	5.0 Miles
Interstate 95	12 Miles
Downtown Raleigh	58 Miles
Raleigh-Durham International Airport	73 Miles
Downtown Durham	84 Miles

LOCATION OVERVIEW

PROPERTY DEMOGRAPHICS

RADIUS	5 MINUTES	10 MINUTES	15 MINUTES
2020 Population	10,805	29,685	59,453
2025 Projected Population	10,675	29,477	59,359
Number of Businesses	206	1,121	2,455
Number of Employees	2,178	14,709	33,878
2020 Households	4,280	12,006	24,189
Average Household Income	\$38,429	\$43,554	\$54,278



PLEASE CONTACT:

AUSTIN NAGY

Vice President
+1 919 831 8197
austin.nagy@cbre-raleigh.com

JOHN HOGAN, III

Associate
+1 919 831 8264
john.hogan@cbre-raleigh.com

© 2021 CB Richard Ellis - Raleigh LLC. All rights reserved. This information has been obtained from sources believed reliable, but has not been verified for accuracy or completeness. You should conduct a careful, independent investigation of the property and verify all information. Any reliance on this information is solely at your own risk. CBRE and the CBRE logo are service marks of CBRE, Inc. All other marks displayed on this document are the property of their respective owners, and the use of such logos does not imply any affiliation with or endorsement of CBRE. Photos herein are the property of their respective owners. Use of these images without the express written consent of the owner is prohibited.