

165 10TH STREET

FOR LEASE | CREATIVE PLUG & PLAY OFFICE SPACE

TCP
TOUCHSTONE
COMMERCIAL PARTNERS



WWW.TCPRE.COM

ETHAN MANN

C 415.990.9127

ethan@tcpre.com DRE # 02223262

GEORGE FARLEY

C 415.994.5767

george@tcpre.com DRE # 02233755

165 10TH STREET

PROPERTY SUMMARY

ADDRESS

165 10th Street, San Francisco, CA 94103

AVAILABLE SPACE

+/- 5,134 Square Feet

RENTAL RATE

\$55/Ft/Year, I.G.

AVAILABLE

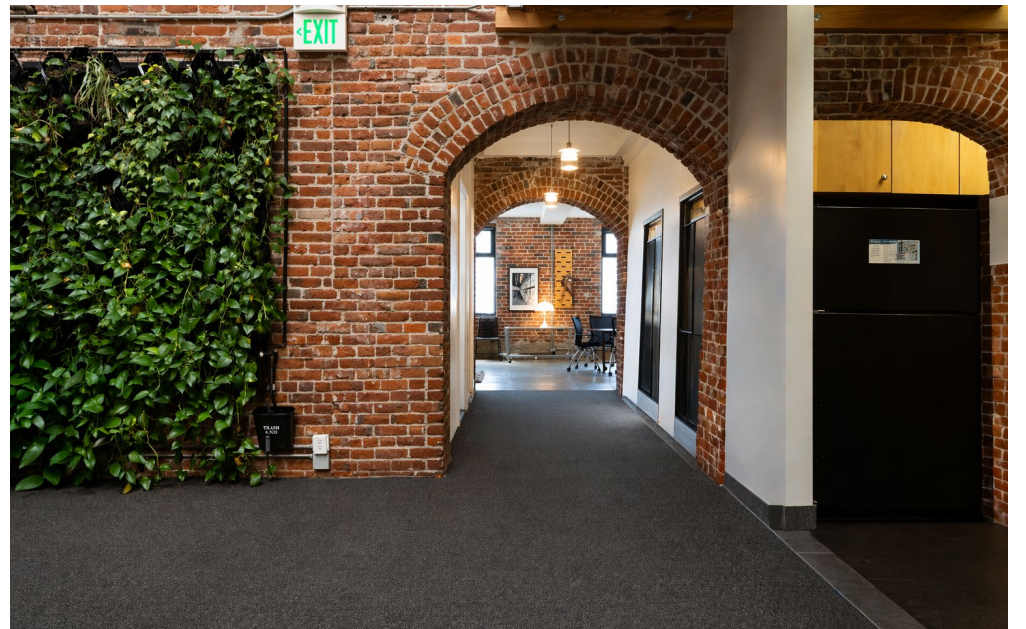
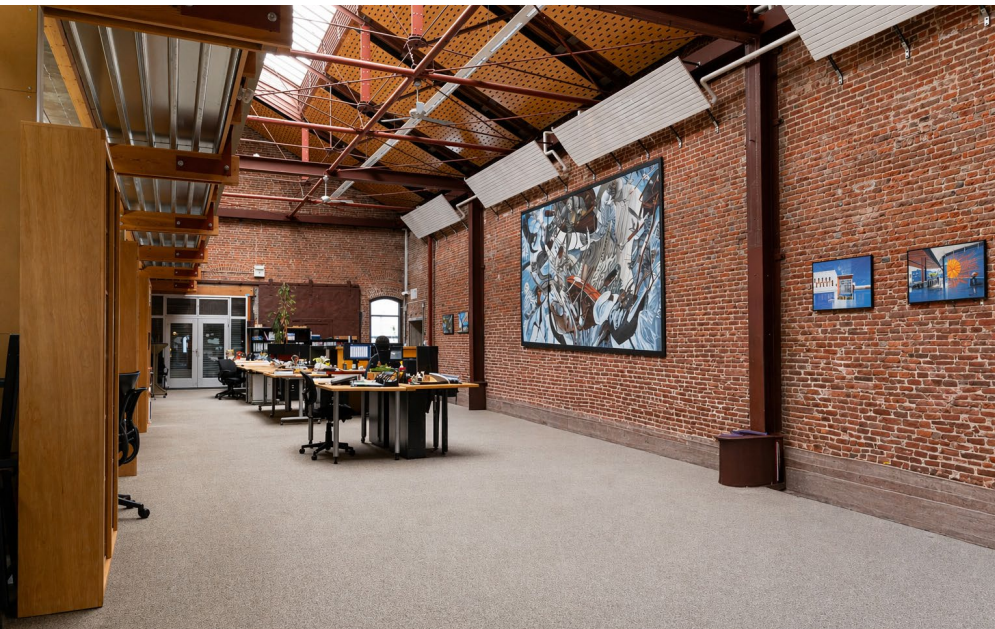
Immediately

BUILDING ATTRIBUTES

- + Retrofitted Brick & Timber San Francisco Landmark Building
- + Move-In Ready & Furniture Available
- + Open Work Space
- + Building Reception Area
- + Kitchenette
- + Secured Entry
- + Abundance of Natural Light & Skylights
- + Mezzanine
- + Four (4) Private Restrooms w/ One (1) Shower



165 10TH STREET

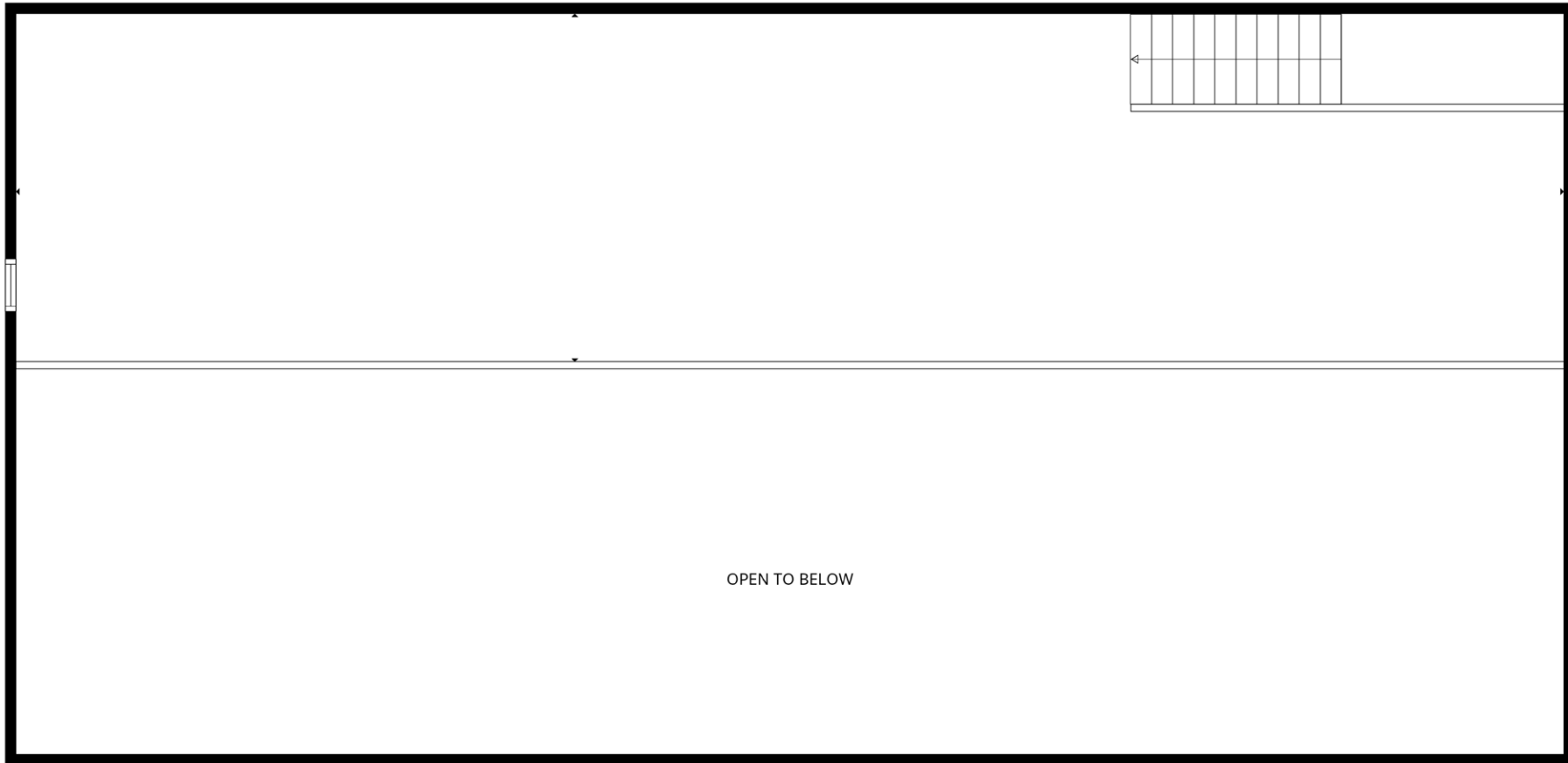


165 10TH STREET

Floor Plan

Mezzanine

+/- 1,338 Square Feet



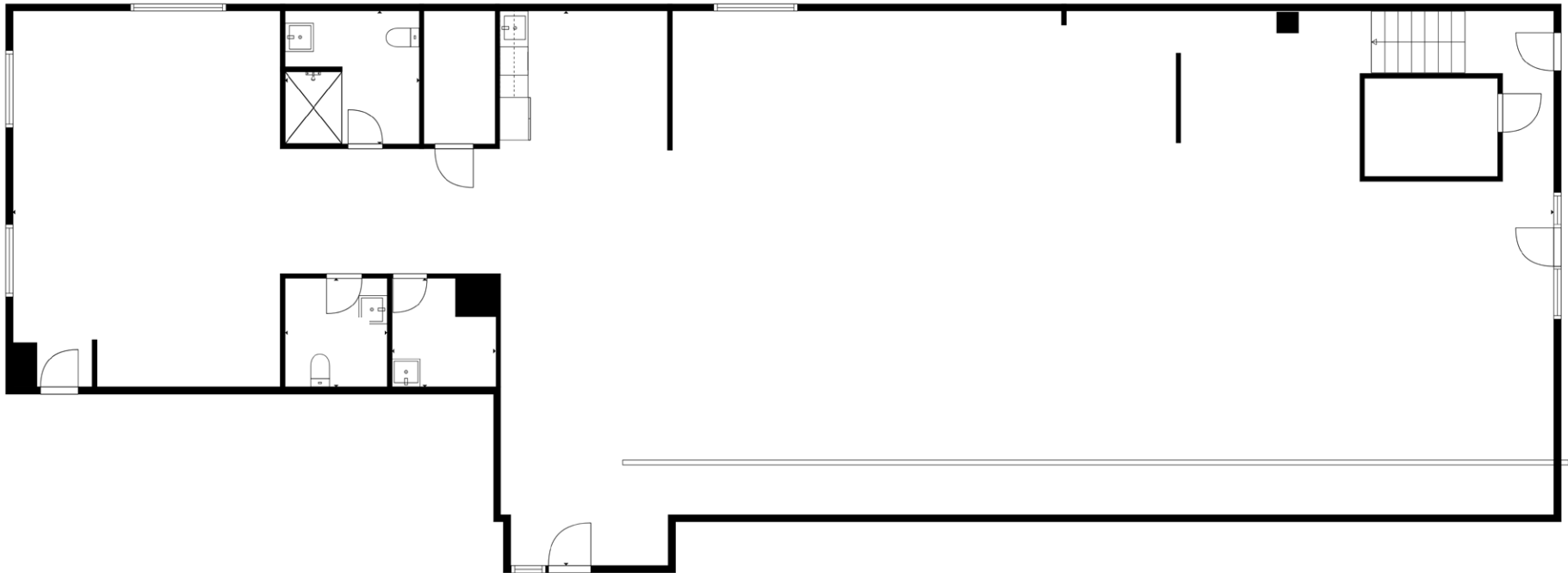
OPEN TO BELOW

165 10TH STREET

Floor Plan

Ground Floor

+/- 3,796 Square Feet



165 10TH STREET

LOCATION OVERVIEW

Desirable South of Market location, walkable to many amenities and to surrounding neighborhoods.



10 MIN to Market St.
10 MIN to Civic Center Bart



05 MIN to Hayes Valley
10 MIN to Union Square
15 MIN to Financial District



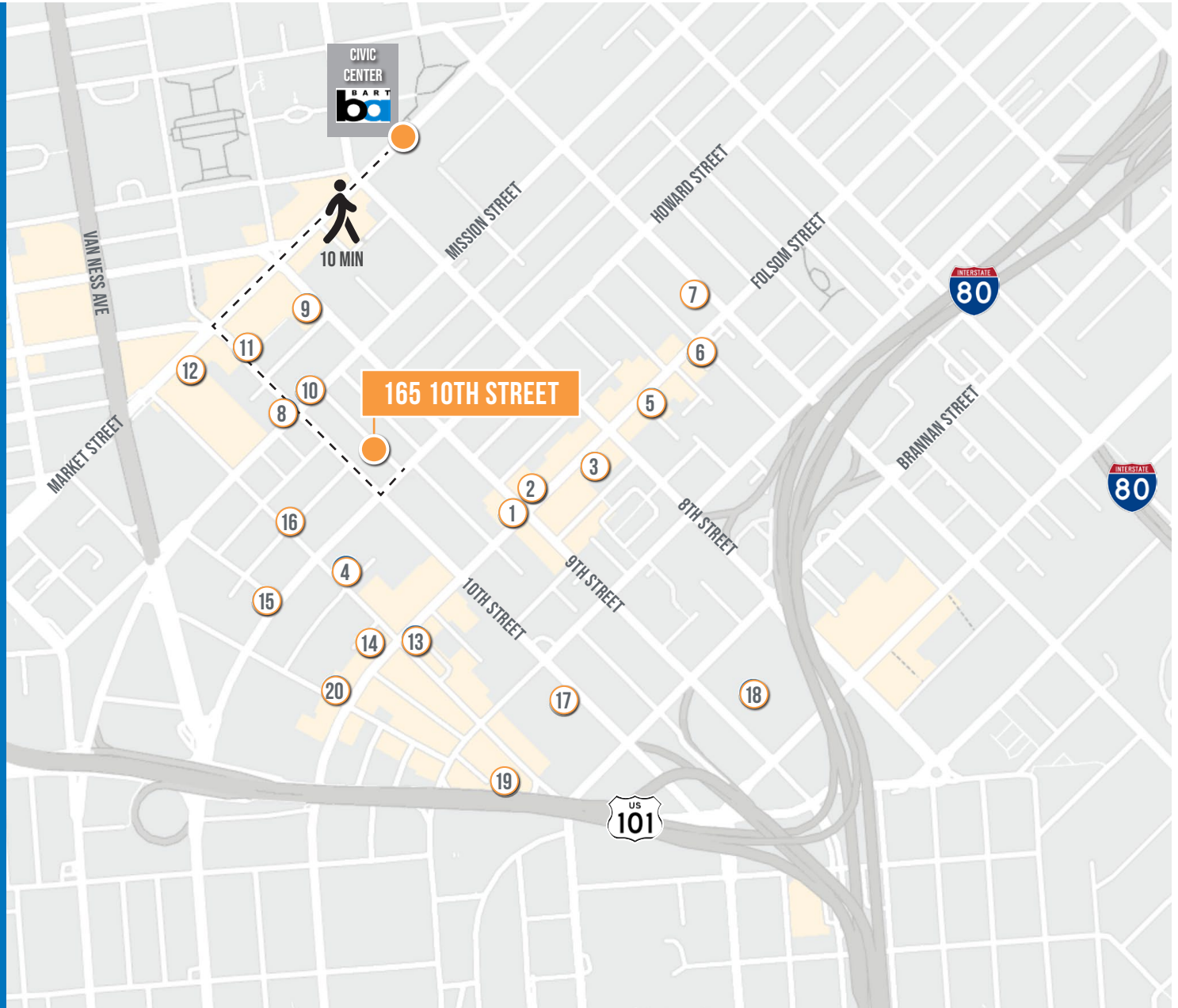
03 MIN to 101 On-Ramp
05 MIN to 80 On-Ramp



165 10TH STREET

NEARBY AMENITIES

- 1..... Kama Sushi Soma
- 2..... Azúcar Lounge
- 3..... Driftwood
- 4..... Don Ramon's
- 5..... Basil Thai Restaurant & Bar
- 6..... Trademark & Copyright
- 7..... Sightglass Coffe
- 8..... Peet's Coffee
- 9..... Cadillac Outdoor Bar & Grill
- 10..... Cumaica: Artesanos del Cafe
- 11..... Blue Bottle Coffee
- 12..... Kagawa-Ya Udon
- 13..... Basil Canteen
- 14..... Eat Sushi Restaurant
- 15..... Sushi Ondo
- 16..... Joint Venture Kitchen
- 17..... Costco Wholesale
- 18..... Trader Joe's
- 19..... SoMa StrEat Food Park
- 20..... The Willows



165 10TH STREET



TRADEMARK SPORTS BAR



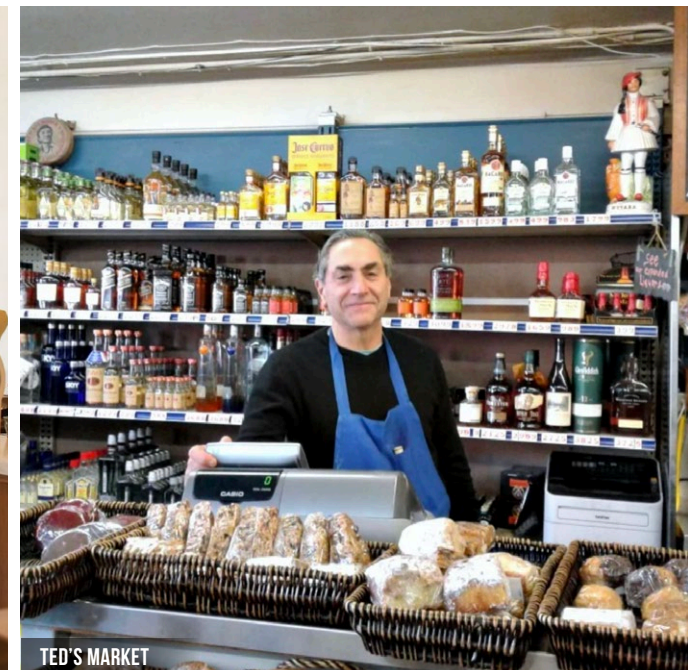
THE WILLOWS SF



BASIL THAI RESTAURANT



SIGHTGLASS COFFEE



TED'S MARKET

165 10TH STREET



Corp. Lic. 01112906
www.tcpre.com

ETHAN MANN

C 415.990.9127
ethan@tcpre.com DRE # 02223262

GEORGE FARLEY

C 415.994.5767
george@tcpre.com DRE # 02233755

This document has been prepared by Touchstone Commercial Partners for advertising and general information only. Touchstone Commercial Partners makes no guarantees, representations or warranties of any kind, expressed or implied, regarding the information including, but not limited to, warranties of content, accuracy and reliability. Any interested party should undertake their own inquiries as to the accuracy of the information. Touchstone Commercial Partners excludes unequivocally all inferred or implied terms, conditions and warranties arising out of this document and excludes all liability for loss and damages arising there from. This publication is the copyrighted property of Touchstone Commercial Partners and/or its licensor(s). ©2026. All rights reserved.