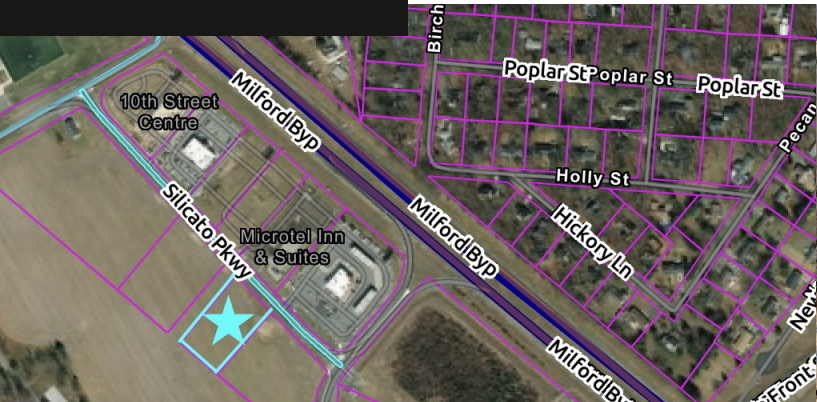


For Sale or Lease

Silicato Outparcel

Silicato Pkwy, Milford, DE 19963



*Property lines are for illustrative purposes only and are NOT survey accurate.

PROPERTY SUMMARY

Discover an exceptional commercial opportunity on Silicato Parkway in the thriving Milford market. Zoned C-3 Highway Commercial, this highly visible 1.4 acre property offers direct highway access and outstanding exposure, making it ideal for a wide range of uses including retail, restaurant, coffee shop, car wash, and more. The site is fully served by public water and sewer, streamlining development and reducing upfront costs. Available for lease or sale, this versatile property provides flexibility for both investors and owner-users looking to capitalize on strong traffic counts and a growing trade area!

PROPERTY HIGHLIGHTS

- Zoned C-3 / Highway Commercial
- Strategic location on Silicato Parkway
- Prime retail development potential
- Excellent visibility!
- Potential Uses Include: Retail, Fast Food with Drive-Thru, Supermarket, Restaurant, Motel or Hotel, Car Wash, and More!

Asking Price	\$1,099,000
Lease Option	Build to Suit
Acreage	1.4+/- Acres
Zoning	Highway Commercial



Tyler Anaya
Advisor
O: 410.543.2440
tyler.anaya@svn.com
DE #RS-0025305

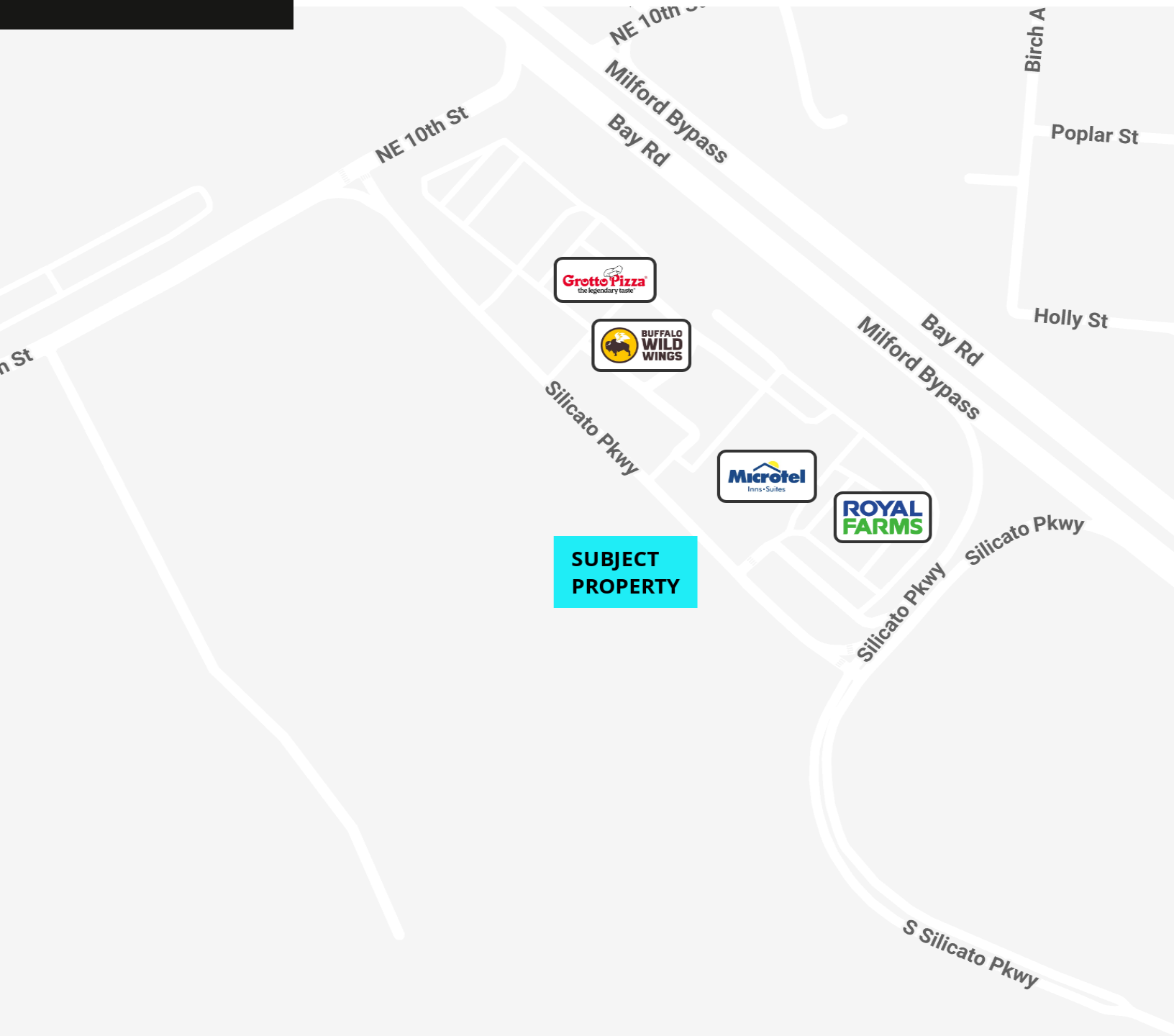


Flo Brotzman
Senior Advisor
O: 410.543.2440
flo.brotzman@svn.com
MD #597618

For Sale

Silicato Outparcel

Silicato Pkwy, Milford, DE 19963



**SUBJECT
PROPERTY**

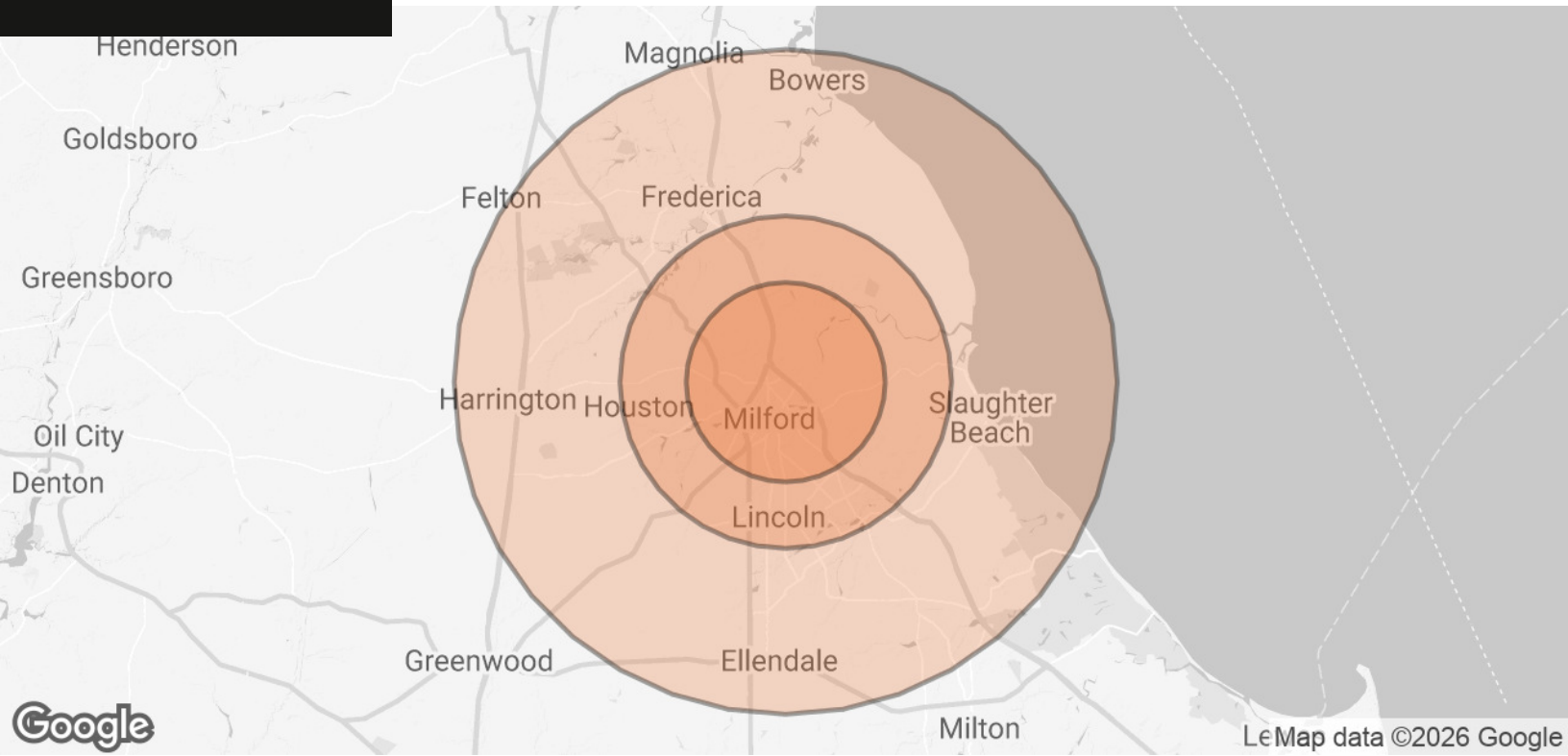
Map
data
©2026
Google

Tyler Anaya
Advisor
O: 410.543.2440
tyler.anaya@svn.com
DE #RS-0025305



Flo Brotzman
Senior Advisor
O: 410.543.2440
flo.brotzman@svn.com
MD #597618





POPULATION	3 MILES	5 MILES	10 MILES
TOTAL POPULATION	17,706	27,036	62,663
AVERAGE AGE	42	43	42
AVERAGE AGE (MALE)	41	41	41
AVERAGE AGE (FEMALE)	44	44	43
HOUSEHOLDS & INCOME	3 MILES	5 MILES	10 MILES
TOTAL HOUSEHOLDS	6,995	10,577	24,304
# OF PERSONS PER HH	2.5	2.6	2.6
AVERAGE HH INCOME	\$84,481	\$87,526	\$88,590
AVERAGE HOUSE VALUE	\$349,565	\$355,542	\$350,106

Demographics data derived from AlphaMap



Tyler Anaya
 Advisor
 O: 410.543.2440
 tyler.anaya@svn.com
 DE #RS-0025305



Flo Brotzman
 Senior Advisor
 O: 410.543.2440
 flo.brotzman@svn.com
 MD #597618