

Office & Medical Office For Lease

SUITE 250 & 255 | PRIME GREEN LAKE LOCATION
6800 EAST GREEN LAKE WAY N, SEATTLE, WA 98115



Property Highlights

Directly across from Green Lake Park

Easy access to Downtown Seattle, Woodland Park, PCC Community Markets, and local conveniences

On-site restaurant and brewery

Access to shared kitchenette

Optional additional storage available

Shared Bathrooms with Showers – Perfect for Bikers



FOR MORE INFO
CONTACT

JACK DEANE
206.707.1315
jdeane@orioncp.com

BOJIDAR GABROVSKI
847.275.8474
bgabrovski@orioncp.com

1218 Third Avenue
Suite 2200
Seattle, WA 98101

www.orioncp.com

ORION
COMMERCIAL PARTNERS

Office & Medical Office For Lease

SUITE 250 & 255 | PRIME GREEN LAKE LOCATION

6800 EAST GREEN LAKE WAY N, SEATTLE, WA 98115



Space Highlights



SECOND FLOOR OFFICE

SUITE: 250

AVAILABLE SPACE: 1,669 RSF

Lease Rate: \$20.00 NNN

Former medical office with built out exam rooms

Elevator Access / Air Conditioning and Heating

The information contained herein was obtained from sources believed reliable; however, ORION Commercial Partners LLC makes no guarantees, warranties or representations as to the completeness or accuracy thereof. The presentation of this property is submitted subject to errors, omissions, change of price or conditions prior to sale or lease, or withdrawal without notice.



FOR MORE INFO
CONTACT

JACK DEANE
206.707.1315
jdeane@orioncp.com

BOJIDAR GABROVSKI
847.275.8474
bgabrovski@orioncp.com

1218 Third Avenue
Suite 2200
Seattle, WA 98101

www.orioncp.com

ORION
COMMERCIAL PARTNERS

Office & Medical Office For Lease

SUITE 250 & 255 | PRIME GREEN LAKE LOCATION

6800 EAST GREEN LAKE WAY N, SEATTLE, WA 98115



Space Highlights



SECOND FLOOR OFFICE

SUITE: 255

AVAILABLE SPACE: 2,128 RSF

Lease Rate: \$20.00 NNN

General office buildout

Existing plumbing hookups

Elevator Access / Air Conditioning and Heating



The information contained herein was obtained from sources believed reliable; however, ORION Commercial Partners LLC makes no guarantees, warranties or representations as to the completeness or accuracy thereof. The presentation of this property is submitted subject to errors, omissions, change of price or conditions prior to sale or lease, or withdrawal without notice.

FOR MORE INFO
CONTACT

JACK DEANE
206.707.1315
jdeane@orioncp.com

BOJIDAR GABROVSKI
847.275.8474
bgabrovski@orioncp.com

1218 Third Avenue
Suite 2200
Seattle, WA 98101

www.orioncp.com

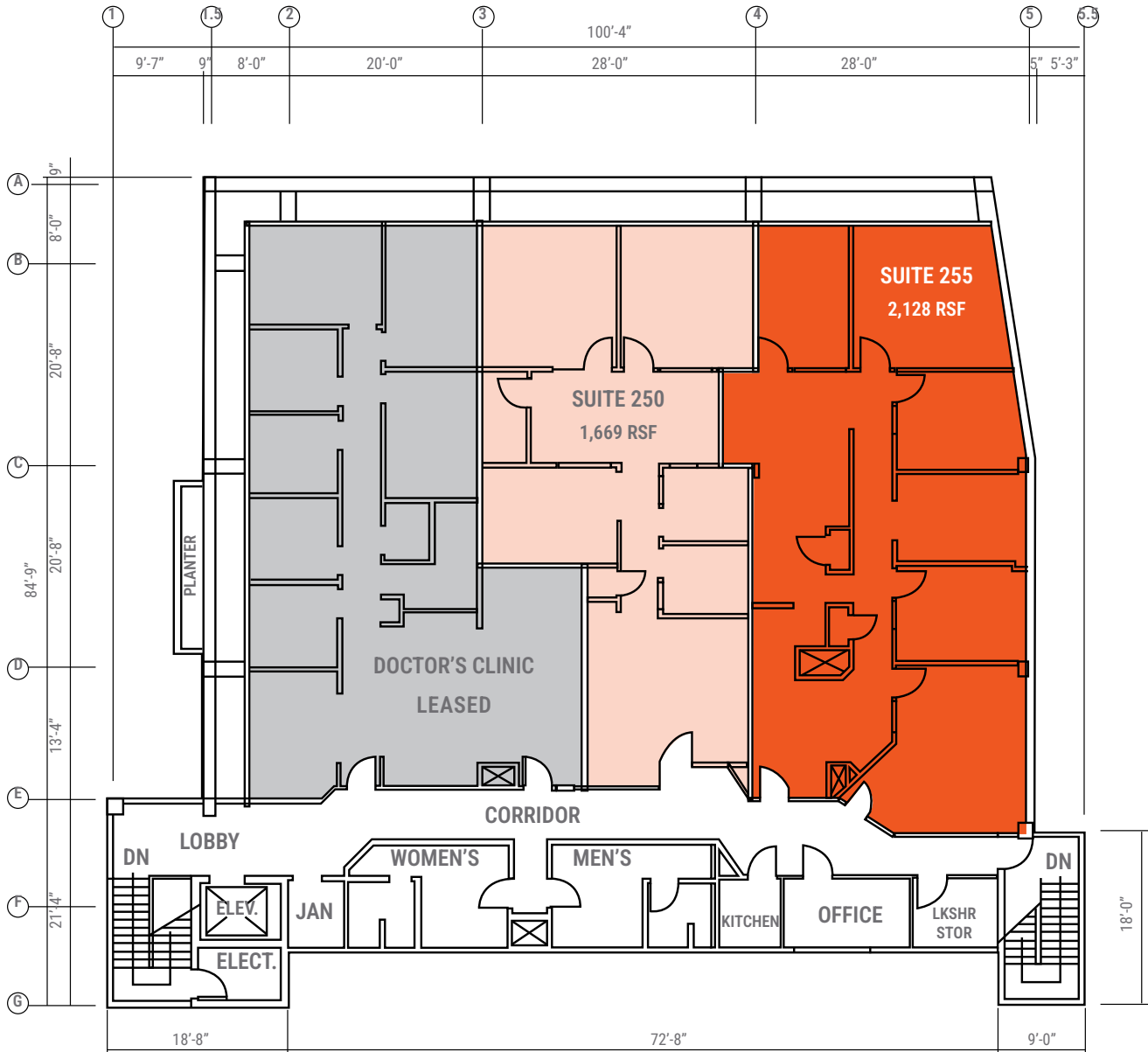
ORION
COMMERCIAL PARTNERS

Office & Medical Office For Lease

SUITE 250 & 255 | PRIME GREEN LAKE LOCATION

6800 EAST GREEN LAKE WAY N, SEATTLE, WA 98115

Second Floor | 6,129 SF



FOR MORE INFO
CONTACT

JACK DEANE
206.707.1315
jdeane@orioncp.com

BOJIDAR GABROVSKI
847.275.8474
bgabrovski@orioncp.com

1218 Third Avenue
Suite 2200
Seattle, WA 98101

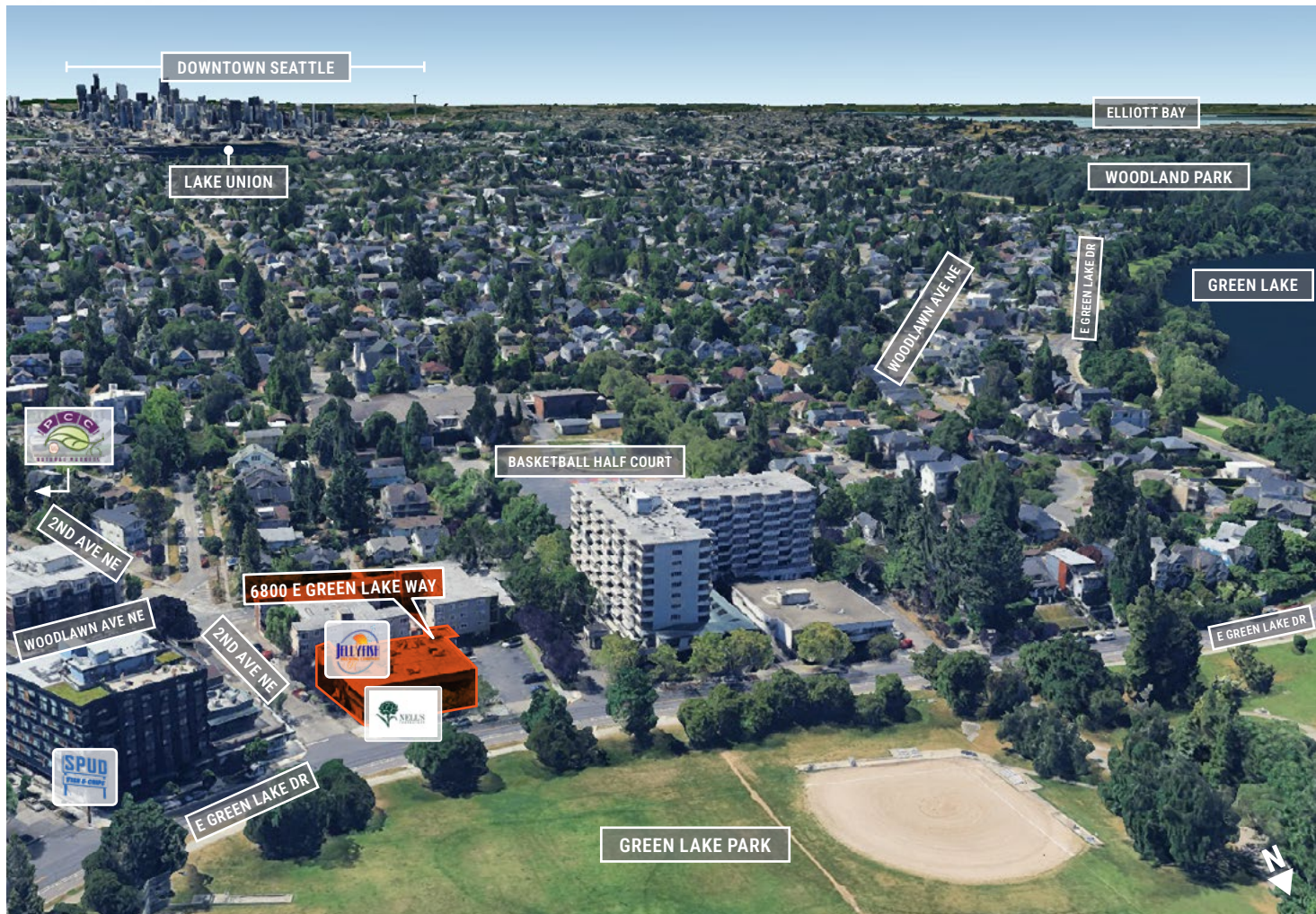
www.orioncp.com

ORION
COMMERCIAL PARTNERS

Office & Medical Office For Lease

SUITE 250 & 255 | PRIME GREEN LAKE LOCATION

6800 EAST GREEN LAKE WAY N, SEATTLE, WA 98115



DEMOGRAPHICS RADIUS	1 MILE	3 MILES	5 MILES
POPULATION			
2024 Population	32,328	270,516	540,992
2029 Population Projection	32,781	273,300	548,591
Annual Growth 2020-2024	0.7%	0.2%	0.7%
Annual Growth 2024-2029	0.3%	0.2%	0.3%
2020 HOUSEHOLDS	14,224	119,951	257,034
2024 Households	14,798	120,729	264,965
2029 Household Projection	15,048	121,994	268,928
DAYTIME EMPLOYMENT			
Public Administration	107	1,107	8,800

DEMOGRAPHICS RADIUS	1 MILE	3 MILES	5 MILES
INCOME			
	14,224	119,951	257,034
Avg Household Income	\$156,878	\$149,877	\$147,169
Median Household Income	\$122,168	\$118,158	\$116,158
\$25,000 - 50,000	1,496	12,150	28,463
\$50,000 - 75,000	1,374	13,439	29,685
\$75,000 - 100,000	1,406	11,962	24,663
\$100,000 - 125,000	1,713	11,750	26,532
\$125,000 - 150,000	997	9,314	19,815
\$150,000 - 200,000	1,628	13,647	31,007
\$200,000+	4,579	34,187	72,277

FOR MORE INFO
CONTACT

JACK DEANE
206.707.1315
jdeane@orioncp.com

BOJIDAR GABROVSKI
847.275.8474
bgabrovski@orioncp.com

1218 Third Avenue
Suite 2200
Seattle, WA 98101

www.orioncp.com

ORION
COMMERCIAL PARTNERS