

OFFICE FOR SUB-LEASE

# TOWN & COUNTRY BUILDING

13819 MERIDIAN EAST, PUYALLUP, WA 98373



## FOR SUB-LEASE

**KELLER WILLIAMS COMMERCIAL**

1029 E Main, Suite 201  
Puyallup, WA 98372



Each Office Independently Owned and Operated

**PRESENTED BY:**

**RICK BROWN**

Commercial Broker  
O: (253) 840-5574  
C: (253) 617-9460  
rickbrown@kw.com  
Lic: 27026, WA

**EDWARD YU**

Commercial Property Manager  
O: (253) 880-2048  
C: (253) 880-2048  
edwardyu@kw.com  
24020496, WA

We obtained the information above from sources we believe to be reliable. However, we have not verified its accuracy and make no guarantee, warranty or representation about it. It is submitted subject to the possibility of errors, omissions, change of price, rental or other conditions, prior sale, lease or financing, or withdrawal without notice. We include projections, opinions, assumptions or estimates for example only, and they may not represent current or future performance of the property. You and your tax and legal advisors should conduct your own investigation of the property and transaction.

# DISCLAIMER

13819 MERIDIAN EAST



All materials and information received or derived from KW Commercial its directors, officers, agents, advisors, affiliates and/or any third party sources are provided without representation or warranty as to completeness, veracity, or accuracy, condition of the property, compliance or lack of compliance with applicable governmental requirements, developability or suitability, financial performance of the property, projected financial performance of the property for any party's intended use or any and all other matters.

Neither KW Commercial its directors, officers, agents, advisors, or affiliates makes any representation or warranty, express or implied, as to accuracy or completeness of the materials or information provided, derived, or received. Materials and information from any source, whether written or verbal, that may be furnished for review are not a substitute for a party's active conduct of its own due diligence to determine these and other matters of significance to such party. KW Commercial will not investigate or verify any such matters or conduct due diligence for a party unless otherwise agreed in writing.

EACH PARTY SHALL CONDUCT ITS OWN INDEPENDENT INVESTIGATION AND DUE DILIGENCE.

Any party contemplating or under contract or in escrow for a transaction is urged to verify all information and to conduct their own inspections and investigations including through appropriate third-party independent professionals selected by such party. All financial data should be verified by the party including by obtaining and reading applicable documents and reports and consulting appropriate independent professionals. KW Commercial makes no warranties and/or representations regarding the veracity, completeness, or relevance of any financial data or assumptions. KW Commercial does not serve as a financial advisor to any party regarding any proposed transaction.

All data and assumptions regarding financial performance, including that used for financial modeling purposes, may differ from actual data or performance. Any estimates of market rents and/or projected rents that may be provided to a party do not necessarily mean that rents can be established at or increased to that level. Parties must evaluate any applicable contractual and governmental limitations as well as market conditions, vacancy factors and other issues in order to determine rents from or for the property. Legal questions should be discussed by the party with an attorney. Tax questions should be discussed by the party with a certified public accountant or tax attorney. Title questions should be discussed by the party with a title officer or attorney. Questions regarding the condition of the property and whether the property complies with applicable governmental requirements should be discussed by the party with appropriate engineers, architects, contractors, other consultants, and governmental agencies. All properties and services are marketed by KW Commercial in compliance with all applicable fair housing and equal opportunity laws.

## KELLER WILLIAMS COMMERCIAL

1029 E Main, Suite 201  
Puyallup, WA 98372



Each Office Independently Owned and Operated

## PRESENTED BY:

### RICK BROWN

Commercial Broker  
O: (253) 840-5574  
C: (253) 617-9460  
rickbrown@kw.com  
Lic: 27026, WA

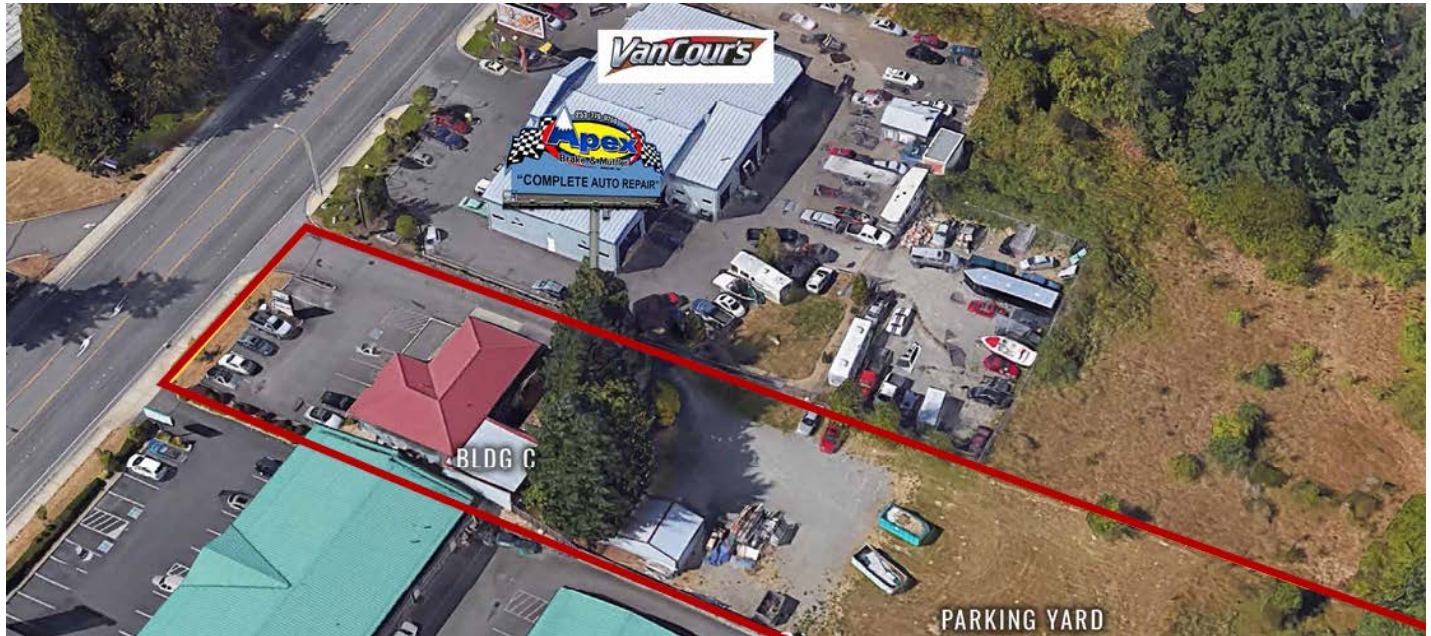
### EDWARD YU

Commercial Property Manager  
O: (253) 880-2048  
C: (253) 880-2048  
edwardyu@kw.com  
24020496, WA

The calculations and data presented are deemed to be accurate, but not guaranteed. They are intended for the purpose of illustrative projections and analysis. The information provided is not intended to replace or serve as substitute for any legal, accounting, investment, real estate, tax or other professional advice, consultation or service. The user of this software should consult with a professional in the respective legal, accounting, tax or other professional area before making any decisions.

# EXECUTIVE SUMMARY

13819 MERIDIAN EAST



## OFFERING SUMMARY

<b>LEASE RATE:</b>	\$20.00/SF/YR, NNN
<b>LEASE TERM:</b>	3 - 5 Years
<b>BUILDING SF:</b>	3,328
<b>AVAILABLE SF:</b>	1,053
<b>OFFICE SF:</b>	813
<b>STORAGE SF:</b>	240
<b>OCCUPANCY:</b>	Multi-Tenant
<b>PARKING:</b>	Surface

## PROPERTY OVERVIEW

This versatile commercial space is perfect for construction-related businesses, contractors, or professional offices needing additional storage. Situated along Meridian Ave E, ensuring excellent visibility and accessibility. Easy access for staff and clients with available parking on-site. This space offers the perfect balance of office and storage, catering to businesses that need efficiency and convenience. Don't miss this opportunity to establish your operations in a prime Puyallup location!



**KELLER WILLIAMS COMMERCIAL**  
1029 E Main, Suite 201  
Puyallup, WA 98372



Each Office Independently Owned and Operated

**RICK BROWN**  
Commercial Broker  
O: (253) 840-5574  
C: (253) 617-9460  
rickbrown@kw.com  
Lic: 27026, WA

**EDWARD YU**  
Commercial Property Manager  
O: (253) 880-2048  
C: (253) 880-2048  
edwardyu@kw.com  
24020496, WA

## LOCATION & HIGHLIGHTS

13819 MERIDIAN EAST



### LOCATION INFORMATION

Building Name: Town & Country Building  
Street Address: 13819 Meridian East  
City, State, Zip: Puyallup, WA 98373  
County: WA - Pierce  
Market: Pierce County  
Sub-market: Puyallup



### LOCATION OVERVIEW

Strategically located on Meridian, this commercial property offers excellent visibility and accessibility along one of the area's busiest thoroughfares. Easy connections to SR-512 and surrounding business hubs, making it ideal for contractors, service businesses, and office operations. Surrounded by retail centers, industrial businesses, and residential neighborhoods, ensuring a steady customer and workforce base. Close to restaurants, banks, hardware stores, and other essential services to support daily business needs.



### PROPERTY HIGHLIGHTS

- Private entry located behind Permabilt
- Ideal space for construction related offices
- Fenced & secured contractor yard for vehicle parking
- Centrally located in South Hill's Meridian corridor
- Signage opportunities on Meridian!

**KELLER WILLIAMS COMMERCIAL**  
1029 E Main, Suite 201  
Puyallup, WA 98372



Each Office Independently Owned and Operated

**RICK BROWN**  
Commercial Broker  
O: (253) 840-5574  
C: (253) 617-9460  
rickbrown@kw.com  
Lic: 27026, WA

**EDWARD YU**  
Commercial Property Manager  
O: (253) 880-2048  
C: (253) 880-2048  
edwardyu@kw.com  
24020496, WA

# PICTURES

13819 MERIDIAN EAST



## KELLER WILLIAMS COMMERCIAL

1029 E Main, Suite 201  
Puyallup, WA 98372



Each Office Independently Owned and Operated

## RICK BROWN

Commercial Broker  
O: (253) 840-5574  
C: (253) 617-9460  
rickbrown@kw.com  
Lic: 27026, WA

## EDWARD YU

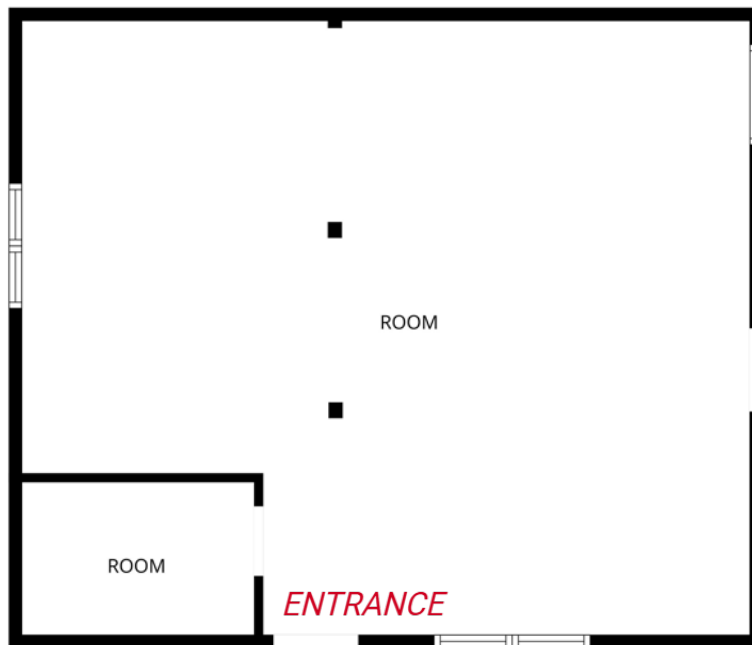
Commercial Property Manager  
O: (253) 880-2048  
C: (253) 880-2048  
edwardyu@kw.com  
24020496, WA

# AVAILABLE SPACES

1011 EAST MAIN AVENUE



# SUB-LEASE



Office Floorplan

## Available Spaces

Suite	Size	Rate	Term	Available
C	1,053	\$20.00 /SF/YR + NNN	3 - 5 years	Now

**KELLER WILLIAMS COMMERCIAL**  
1029 E Main, Suite 201  
Puyallup, WA 98372



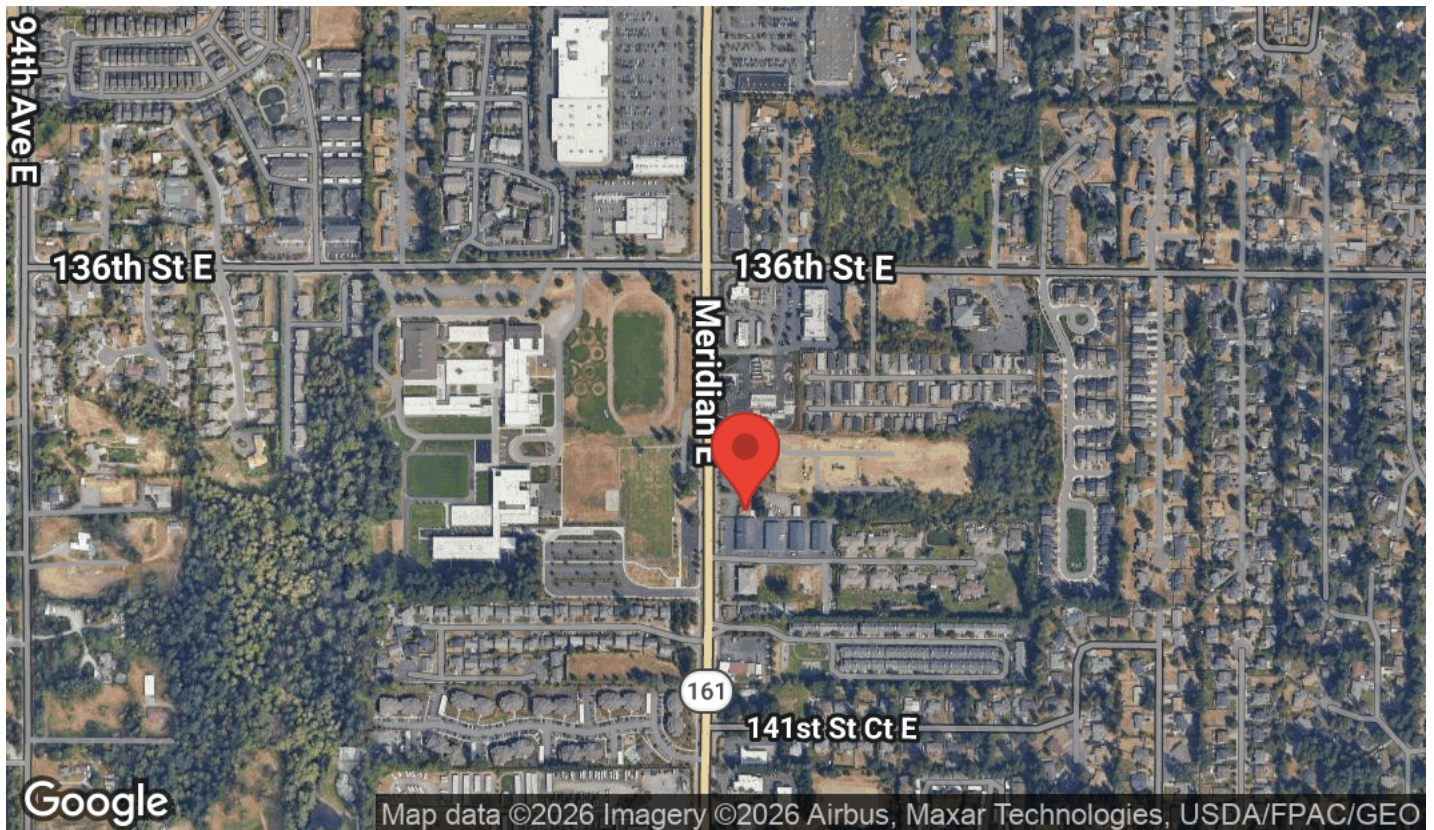
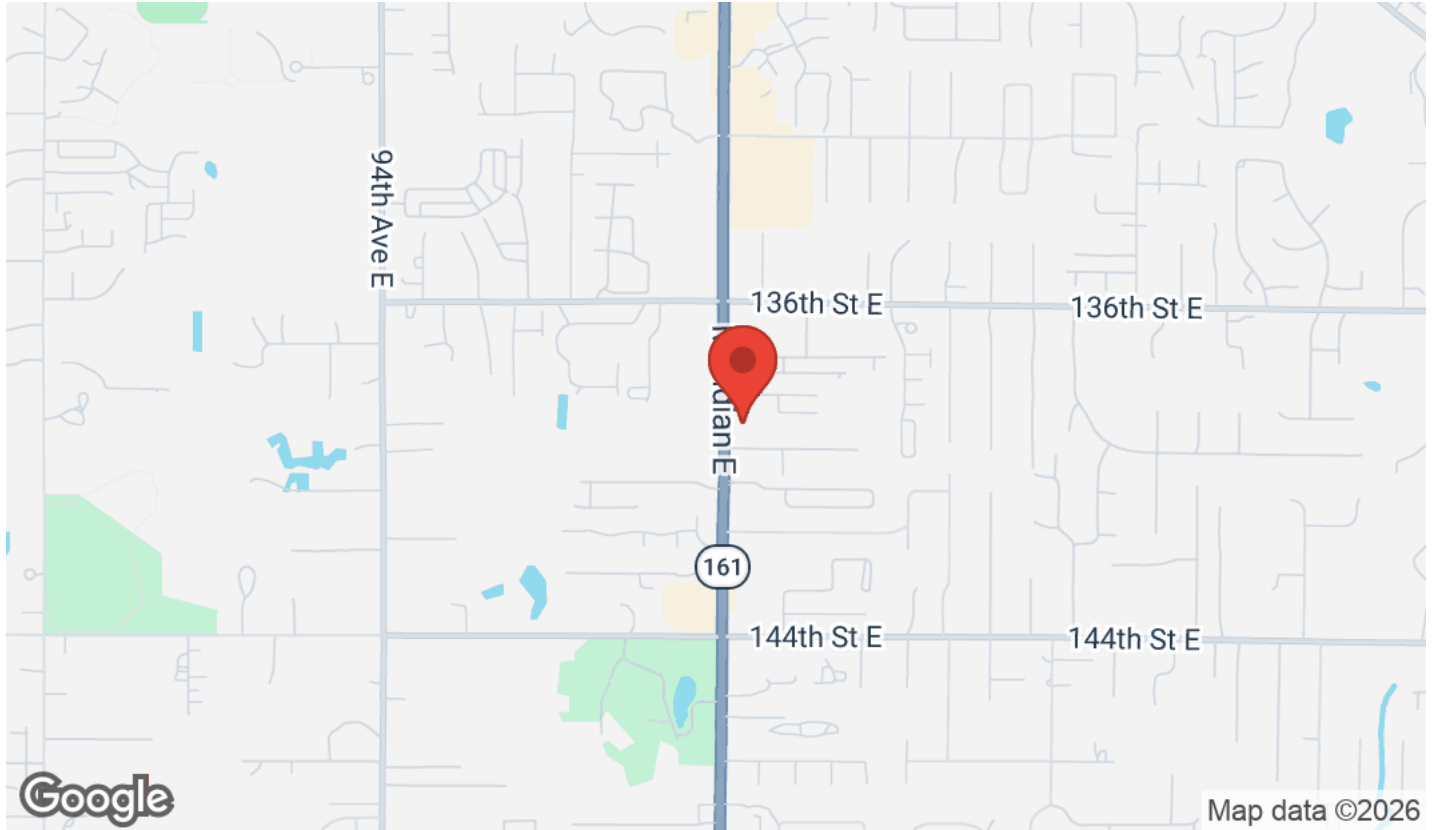
Each Office Independently Owned and Operated

**RICK BROWN**  
Commercial Broker  
O: (253) 840-5574  
C: (253) 617-9460  
rickbrown@kw.com  
Lic: 27026, WA

**EDWARD YU**  
Commercial Property Manager  
O: (253) 880-2048  
C: (253) 880-2048  
edwardyu@kw.com  
24020496, WA

# LOCATION MAPS

13819 MERIDIAN EAST



**KELLER WILLIAMS COMMERCIAL**  
1029 E Main, Suite 201  
Puyallup, WA 98372



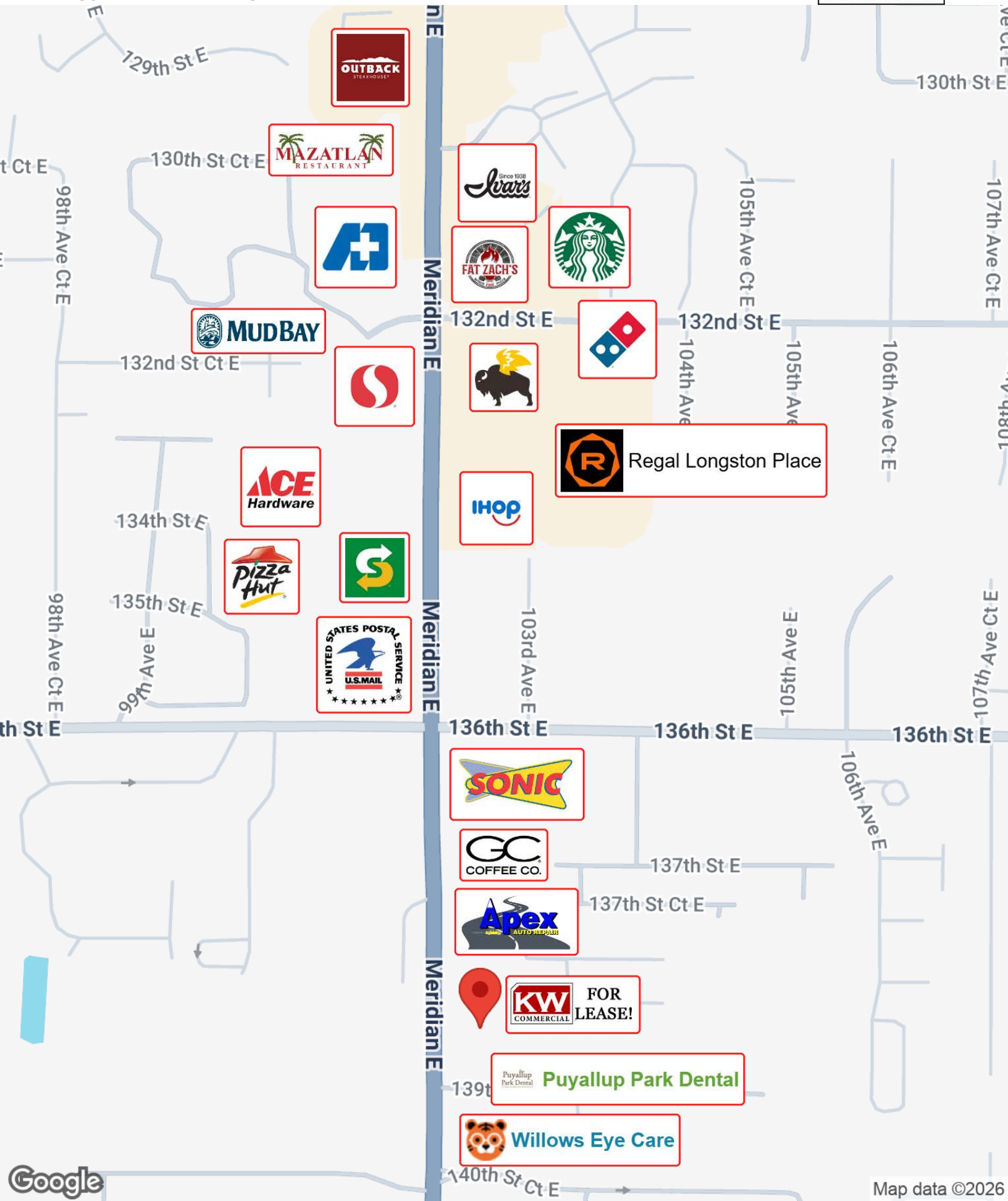
Each Office Independently Owned and Operated

**RICK BROWN**  
Commercial Broker  
O: (253) 840-5574  
C: (253) 617-9460  
rickbrown@kw.com  
Lic: 27026, WA

**EDWARD YU**  
Commercial Property Manager  
O: (253) 880-2048  
C: (253) 880-2048  
edwardyu@kw.com  
24020496, WA

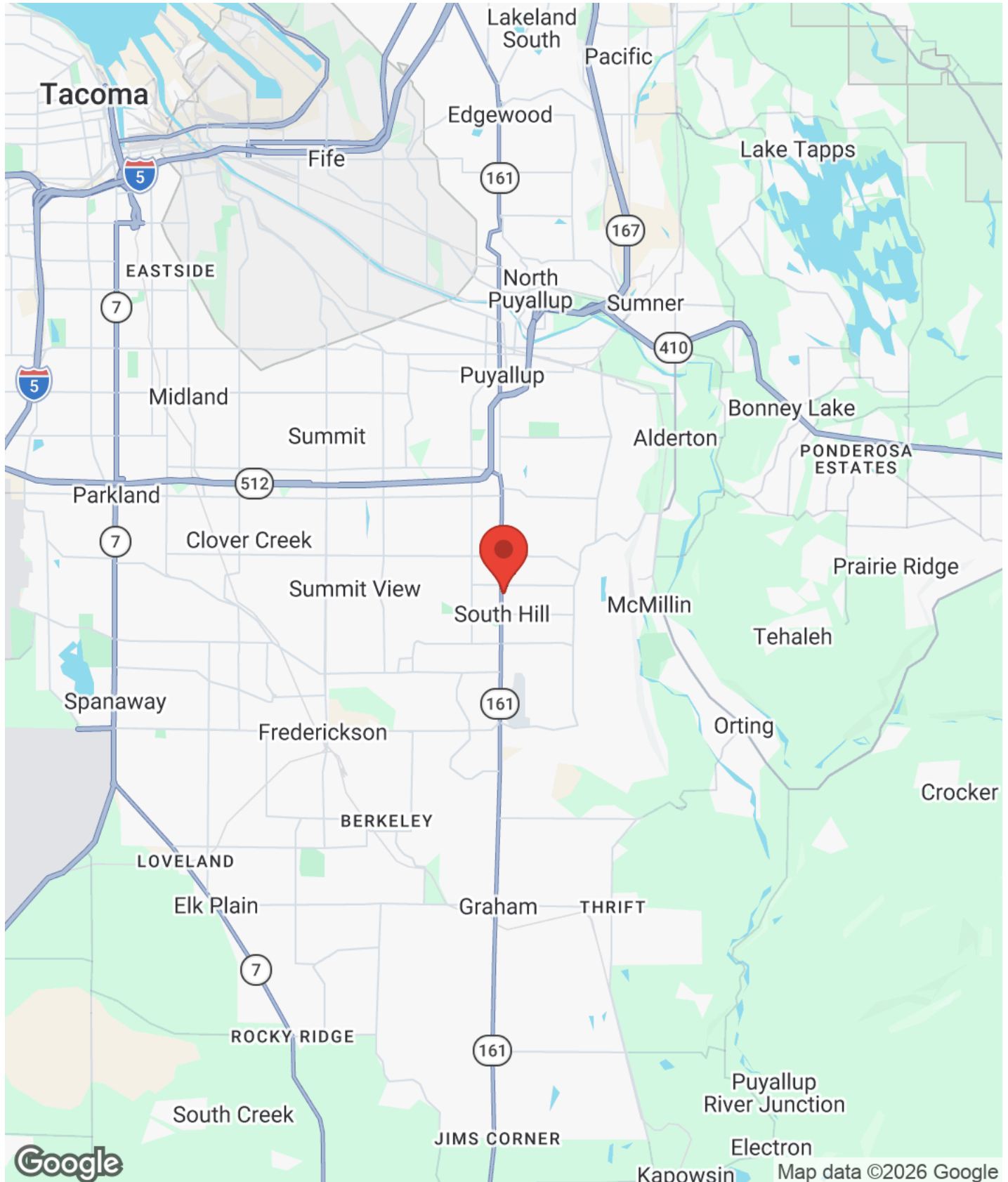
# BUSINESS MAP

13819 MERIDIAN EAST



# REGIONAL MAP

13819 MERIDIAN EAST



**KELLER WILLIAMS COMMERCIAL**  
1029 E Main, Suite 201  
Puyallup, WA 98372



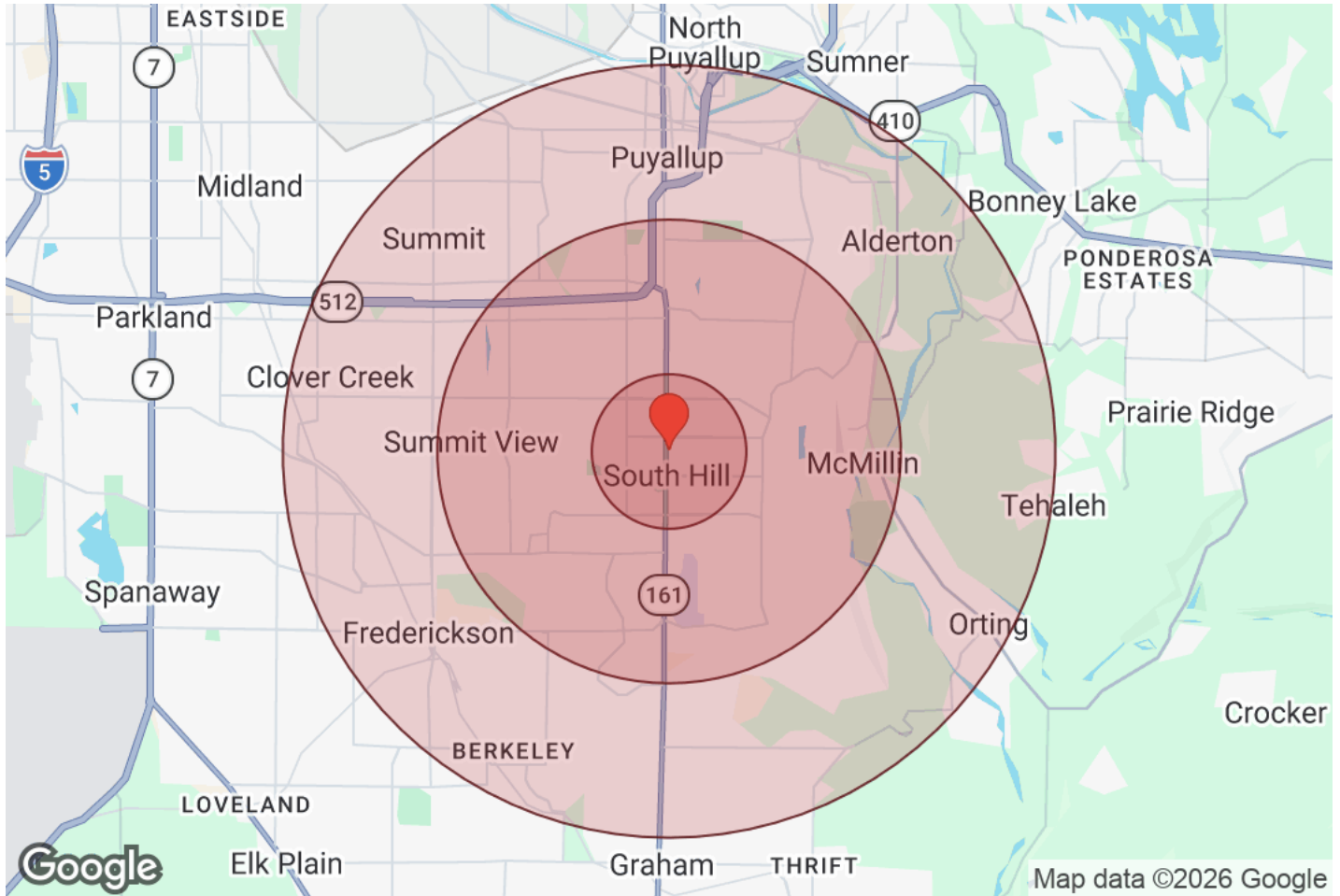
Each Office Independently Owned and Operated

**RICK BROWN**  
Commercial Broker  
O: (253) 840-5574  
C: (253) 617-9460  
rickbrown@kw.com  
Lic: 27026, WA

**EDWARD YU**  
Commercial Property Manager  
O: (253) 880-2048  
C: (253) 880-2048  
edwardyu@kw.com  
24020496, WA

# DEMOGRAPHICS

13819 MERIDIAN EAST



Distance: ● 1 Mile ● 3 Miles ● 5 Miles

Population	1 Mile	3 Miles	5 Miles
Male	7,070	46,236	95,026
Female	7,389	47,560	96,192
Total Population	14,460	93,796	191,218

Race / Ethnicity	1 Mile	3 Miles	5 Miles
White	8,834	57,675	121,137
Black	1,124	6,791	12,754
Am In/AK Nat	107	628	1,358
Hawaiian	241	1,304	2,581
Hispanic	1,951	12,118	24,151
Asian	1,115	7,982	14,265
Multiracial	1,056	7,072	14,399
Other	32	225	574

Housing	1 Mile	3 Miles	5 Miles
Total Units	5,698	36,260	74,306
Occupied	5,377	34,233	69,999
Owner Occupied	2,927	22,620	47,268
Renter Occupied	2,450	11,613	22,731
Vacant	322	2,027	4,307

Age	1 Mile	3 Miles	5 Miles
Ages 0 - 14	3,006	19,088	38,770
Ages 15 - 24	1,860	11,536	22,966
Ages 25 - 54	6,403	40,392	82,045
Ages 55 - 64	1,383	9,764	20,549
Ages 65+	1,807	13,016	26,887

Income	1 Mile	3 Miles	5 Miles
Median	\$98,673	\$113,673	\$113,224
Under \$15k	180	1,554	2,677
\$15k - \$25k	162	771	1,844
\$25k - \$35k	164	1,239	2,475
\$35k - \$50k	352	2,168	4,435
\$50k - \$75k	1,001	4,318	8,478
\$75k - \$100k	876	4,310	9,659
\$100k - \$150k	1,382	7,983	16,878
\$150k - \$200k	641	5,448	10,807
Over \$200k	619	6,443	12,743

## KELLER WILLIAMS COMMERCIAL

1029 E Main, Suite 201  
Puyallup, WA 98372



Each Office Independently Owned and Operated

## RICK BROWN

Commercial Broker  
O: (253) 840-5574  
C: (253) 617-9460  
rickbrown@kw.com  
Lic: 27026, WA

## EDWARD YU

Commercial Property Manager  
O: (253) 880-2048  
C: (253) 880-2048  
edwardyu@kw.com  
24020496, WA