

874 SF
FOR SUBLEASE
SHARED OPPORTUNITY AVAILABLE

2730
WILSHIRE
BLVD

Suite 370
Santa Monica



MICHELLE ESQUIVEL HALL
Executive Vice President

+1 310 550 2525
michelle.esquivel@cbre.com

Lic. 01290582

DREW PION
First Vice President

+1 310 550 2566
drew.pion@cbre.com

Lic. 02085229

CBRE



FOR SUBLEASE

Newly Built Class A Medical Office Space

Premises: 874 RSF

Sublease Term: Through March 31, 2028

Longer, direct term with the Landlord is a possibility

Rental Rate: \$4.25 PSF, Full Service Gross

Features:

Nicely appointed medical or therapy suite with fantastic views

Fully furnished waiting reception and waiting area

2 Exam Rooms w/Plumbing

1 Large Corner Office

Kitchen or 3rd Exam w/Plumbing

Secured Subterranean Parking.

Ample Street Parking

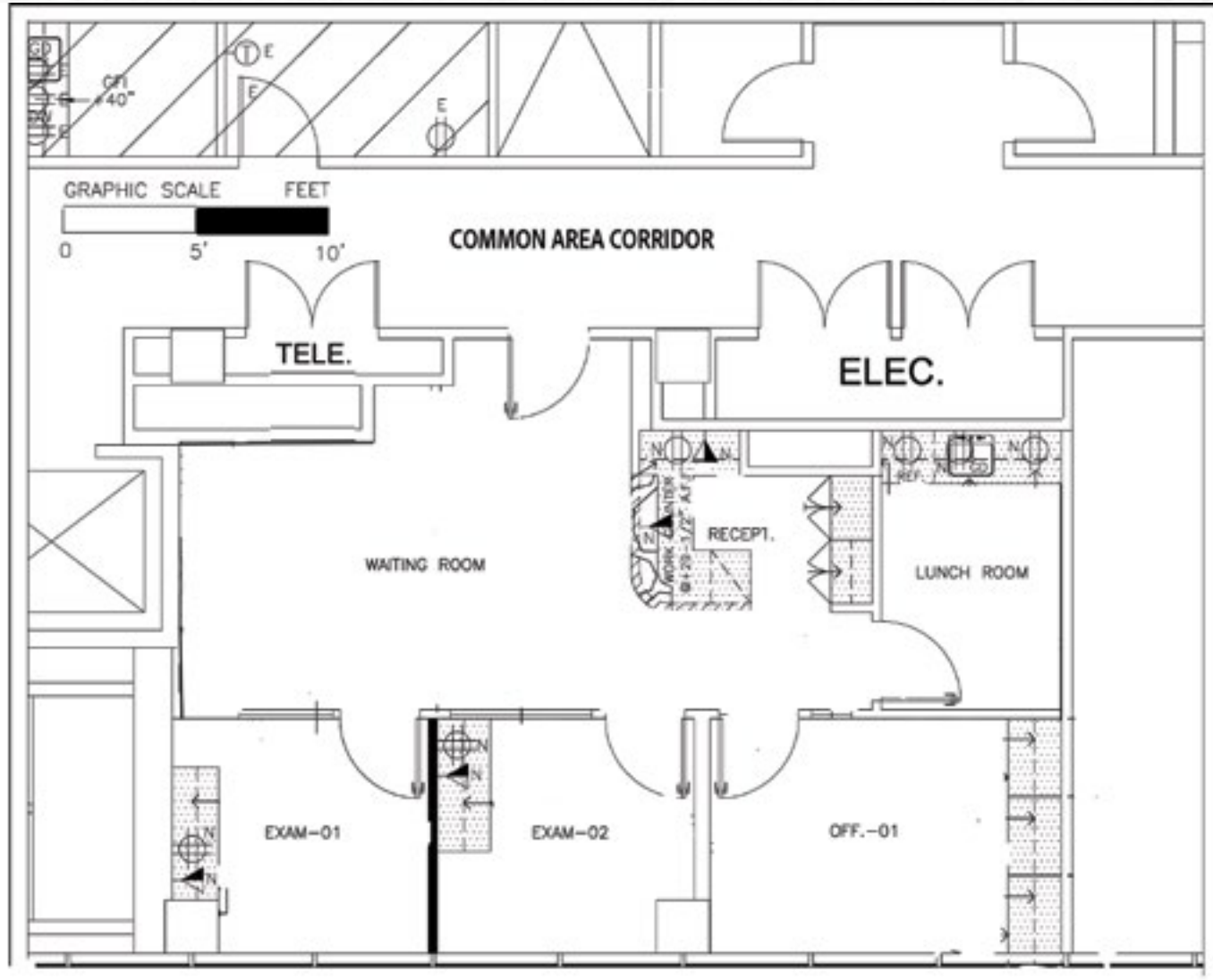
Located across the street from Erewhon and
walking distance to other amenities and restaurants



Photo
Gallery

FLOOR PLAN

Suite 370



874 RSF FOR SUBLEASE



2730
WILSHIRE
BLVD

MICHELLE ESQUIVEL HALL
Executive Vice President

+1 310 550 2525
michelle.esquivel@cbre.com

Lic. 01290582

DREW PION
First Vice President

+1 310 550 2566
drew.pion@cbre.com

Lic. 02085229

© 2026 CBRE, Inc. All rights reserved. This information has been obtained from sources believed reliable but has not been verified for accuracy or completeness. CBRE, Inc. makes no guarantee, representation or warranty and accepts no responsibility or liability as to the accuracy, completeness, or reliability of the information contained herein. You should conduct a careful, independent investigation of the property and verify all information. Any reliance on this information is solely at your own risk. CBRE and the CBRE logo are service marks of CBRE, Inc. All other marks displayed on this document are the property of their respective owners, and the use of such marks does not imply any affiliation with or endorsement of CBRE. Photos herein are the property of their respective owners. Use of these images without the express written consent of the owner is prohibited.

CBRE