



Medical & Office Space Available

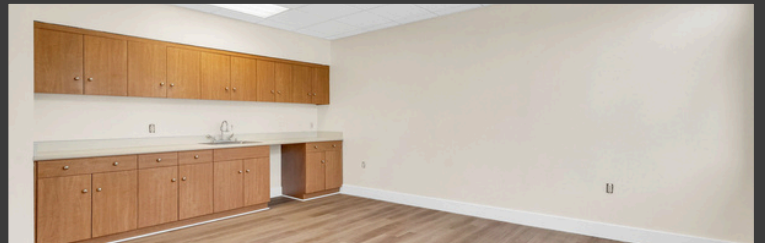
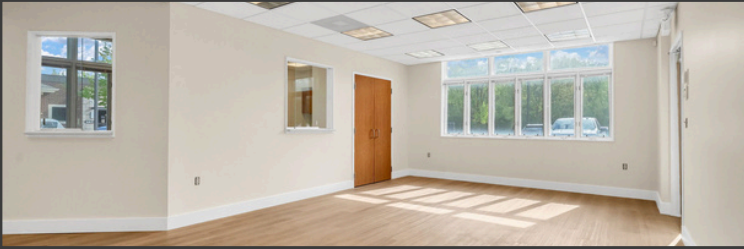
**with Corewell Health
as Anchor Tenant**

**19725 ALLEN RD
BROWNSTOWN, MI**

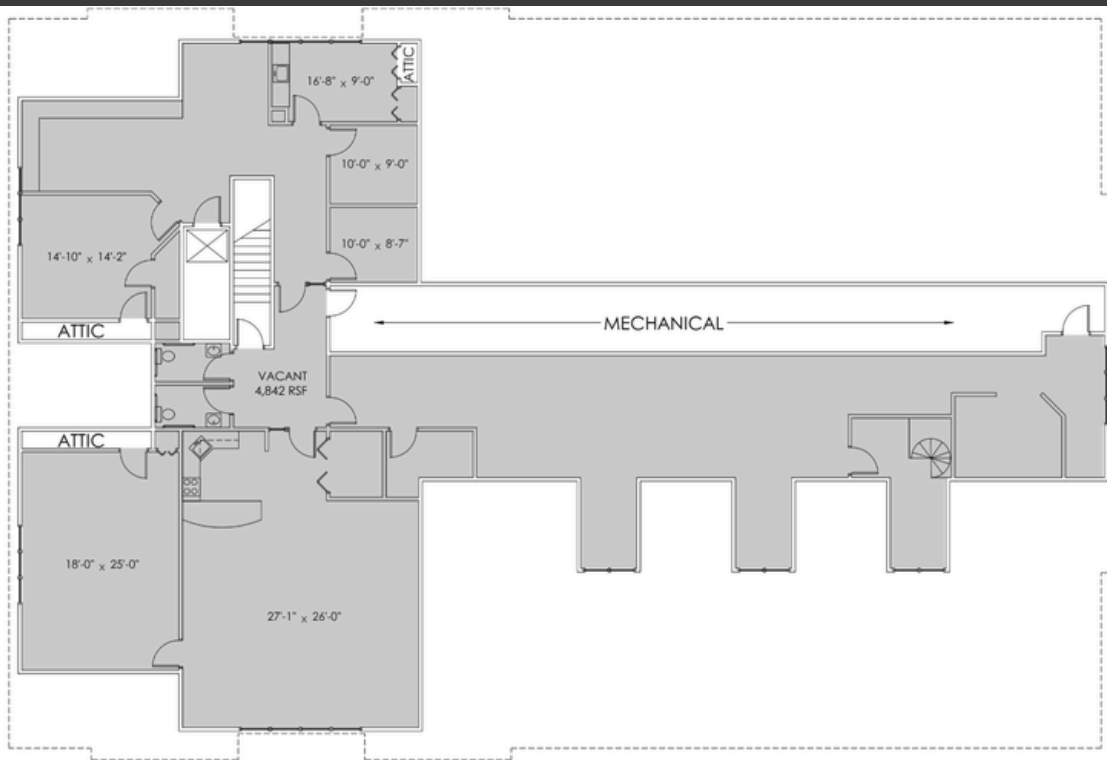
FOR LEASE

KEY HIGHLIGHTS

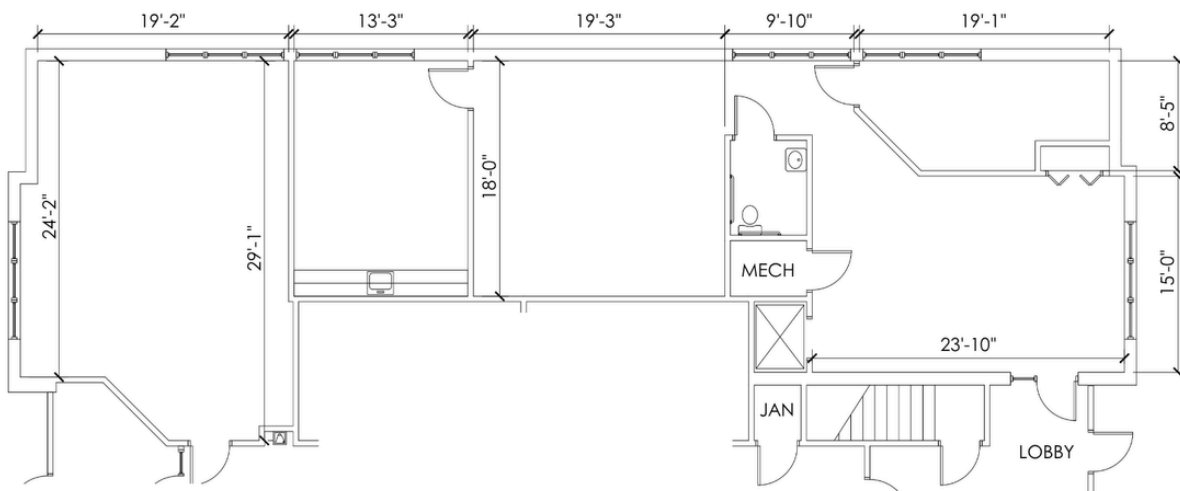
- Corewell Health is the building's anchor tenant
- 2,066 SF 1st floor newly updated medical suite
- 4,842 SF 2nd floor medical / office suite
- Lease rates starting at \$12.00/SF NNN
- Allen Road monument signage available
- Excellent visibility and access
- Ample surface parking
- Minutes from major hospital systems
- Strong professional office presence
- Abundant on-site parking for employees, patients, and visitors
- Excellent parking ratio with ample surface parking surrounding the building



AVAILABLE SUITES



SUITE 2 — 4,842 SF | SECOND FLOOR | PROFESSIONAL OFFICE
SPACIOUS SUITE WELL-SUITED FOR MORTGAGE BROKERS, INSURANCE AGENTS, FINANCIAL ADVISORS, LAW FIRMS, STAFFING AGENCIES, OR GENERAL PROFESSIONAL OFFICE USERS. \$11/SF NNN



SUITE 1 — 2,066 SF | FIRST FLOOR | MEDICAL OFFICE FULLY UPDATED AND MOVE-IN READY. FEATURES LUXURY VINYL PLANK FLOORING THROUGHOUT, FRESH PAINT, AND NEW LED LIGHTING. IDEAL FOR PHYSICIAN PRACTICES, SPECIALIST OFFICES, THERAPY PROVIDERS, OR OTHER MEDICAL USERS. \$12/SF NNN



SCHEDULE A PRIVATE TOUR



SCAN THE QR CODE
FOR 3D
MATTERPORT TOUR

MARK Z
Chief Executive Officer
markz@soldbymarkz.com
248-246-1752



40020 W 12 Mile Rd
Novi, MI 48377

© 2026 Z Real Estate. All rights reserved. This information has been obtained from sources believed reliable, but has not been verified for accuracy or completeness. Any projections, opinions, or estimates are subject to uncertainty. The information may not represent the current or future performance of the property. You and your advisors should conduct a careful, independent investigation of the property and verify all information. Any reliance on this information is solely at your own risk. Z Real Estate and the eXp logo are service marks of eXp and/or its affiliated or related companies in the United States and other countries. All other marks displayed on this document are the property of their respective owners. Photos herein are the property of their respective owners and use of these images without the express written consent of the owner is prohibited.