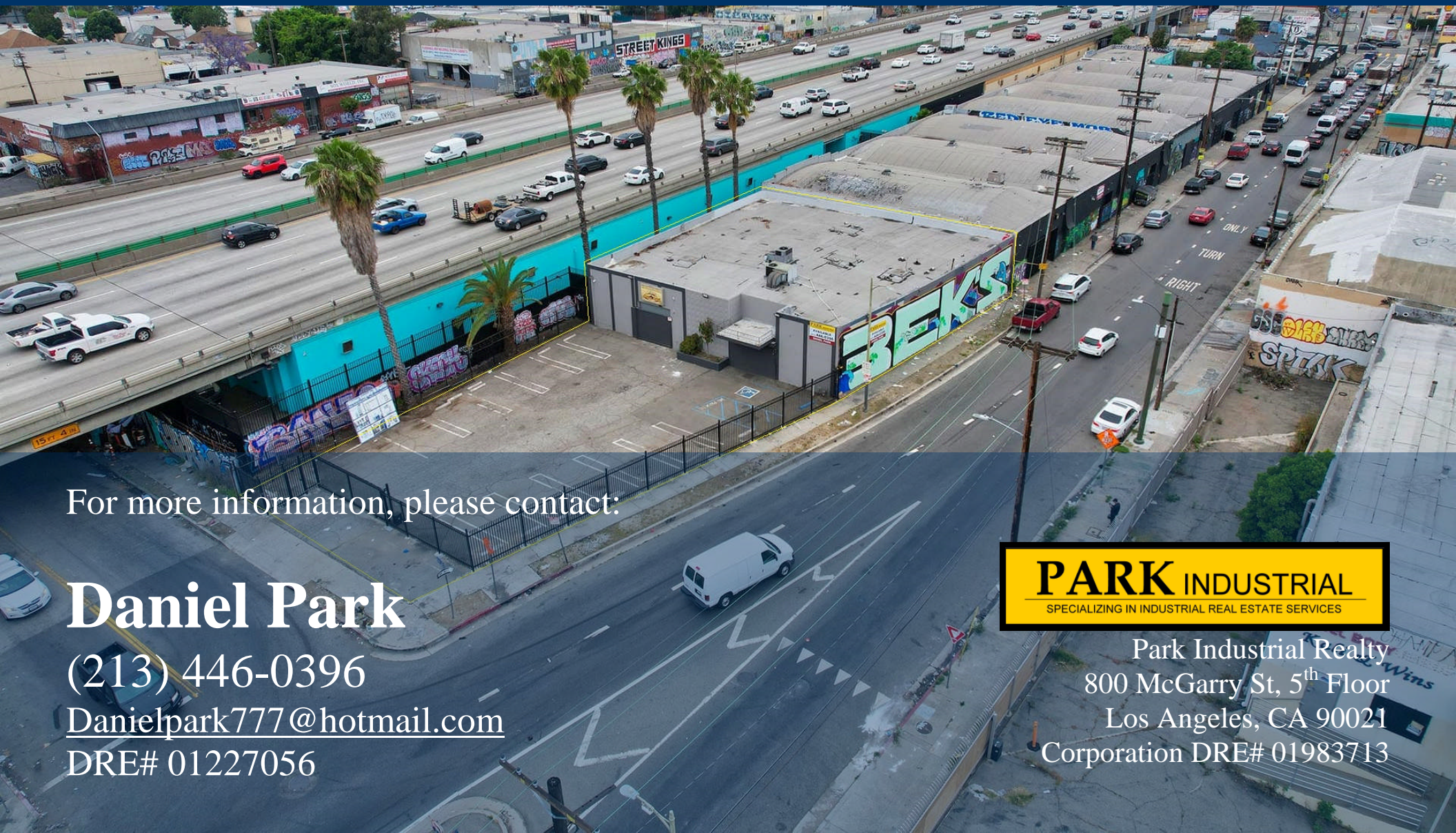


FOR SALE

1374 E 16TH STREET
LOS ANGELES, CA 90021

±6,040 SF

INDUSTRIAL BUILDING
DTLA FASHION DISTRICT



For more information, please contact:

Daniel Park

(213) 446-0396

Danielpark777@hotmail.com

DRE# 01227056



Park Industrial Realty
800 McGarry St, 5th Floor
Los Angeles, CA 90021
Corporation DRE# 01983713

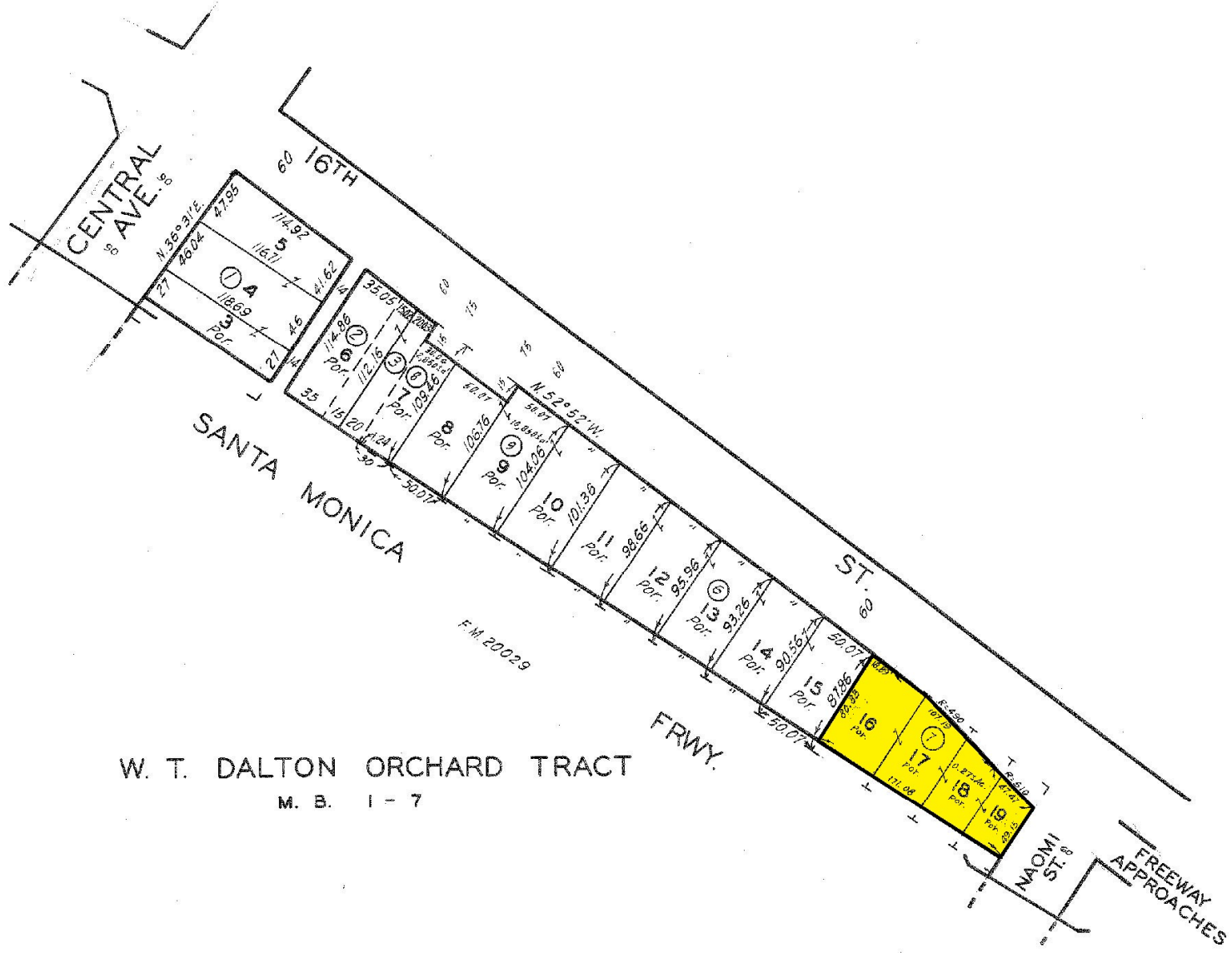
Building SF:	6,040 SF	• Free standing building with a large secure fenced and gated yard
Land SF:	11,761 SF	• High ceiling with 14' min clear height
Office SF:	1,240 SF	• Heavy 3 phase electrical power
Year Built:	1965	• Gas served building
Clear Height:	14'	• 15 parking spaces
# Parking:	15	• Immediate access to 10 freeway on/off ramps
Loading:	1 GL	• Great for manufacturing or warehousing
Power:	400 A, 120-240 V, 3 Ph, 4 W	• Nice & clean office area
# Restrooms:	2	• Downtown LA Fashion District location
Zoning:	[LF1-WH1-6][I1-N]	
Sale Price:	\$1,750,000 (\$289.73/SF)	

All information has been furnished from sources which we deem reliable, but for which we assume no liability. All measurements are approximate. Broker/Owner do not warrant its accuracy. Buyer/Lessee must verify all information.

5130 | 15
SCALE 1" = 80'

2011

1-28-65
260604000
03010
20100112
20100109

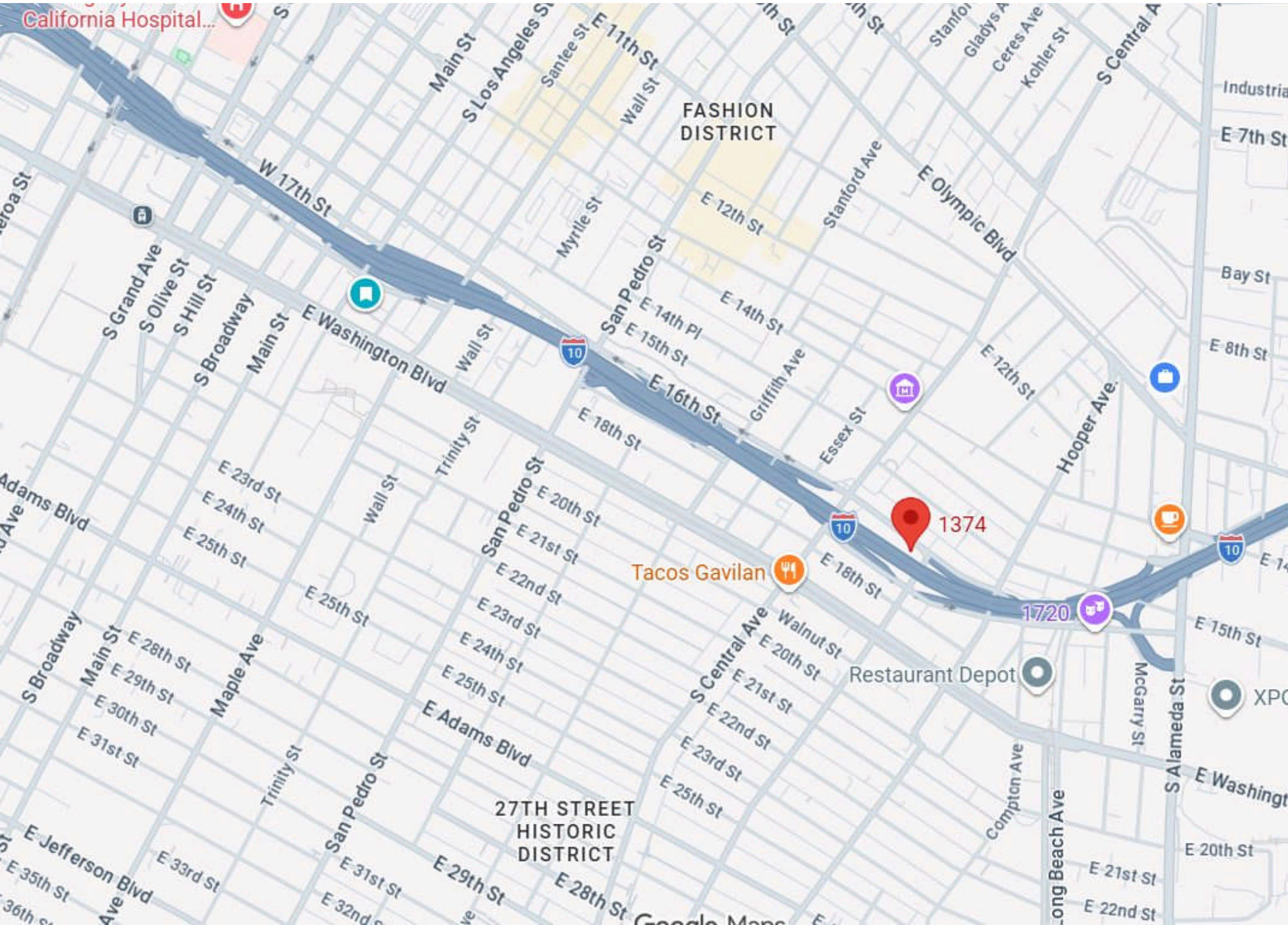


W. T. DALTON ORCHARD TRACT
M. B. 1 - 7



CODE
15117

FOR PREV. ASSM'T. SEE: 1326-1

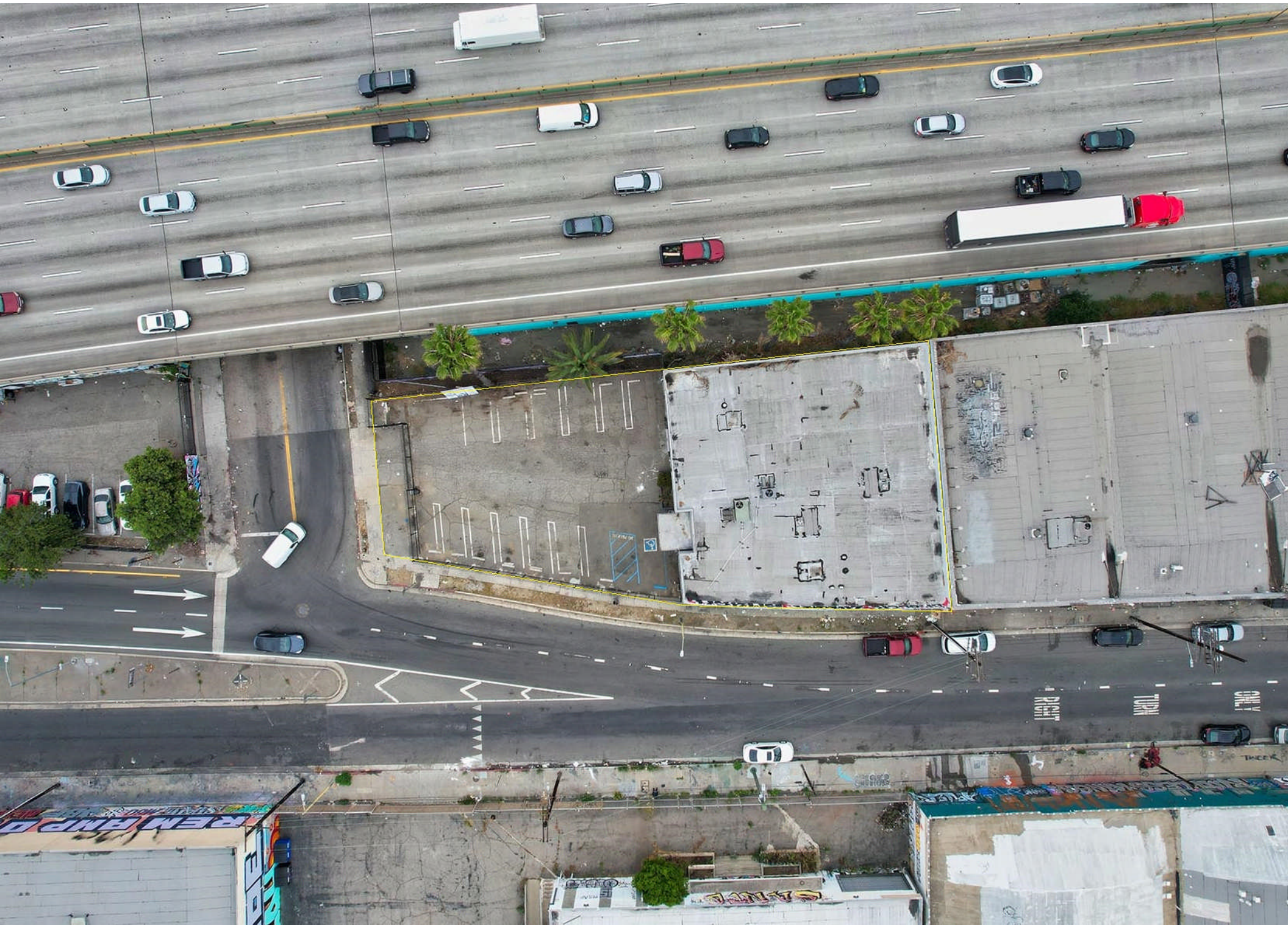






FOR SALE | ±6,040 SF INDUSTRIAL BUILDING

1374 E 16TH ST







FOR SALE | ±6,040 SF INDUSTRIAL BUILDING

1374 E 16TH ST



FOR SALE | ±6,040 SF INDUSTRIAL BUILDING

1374 E 16TH ST

