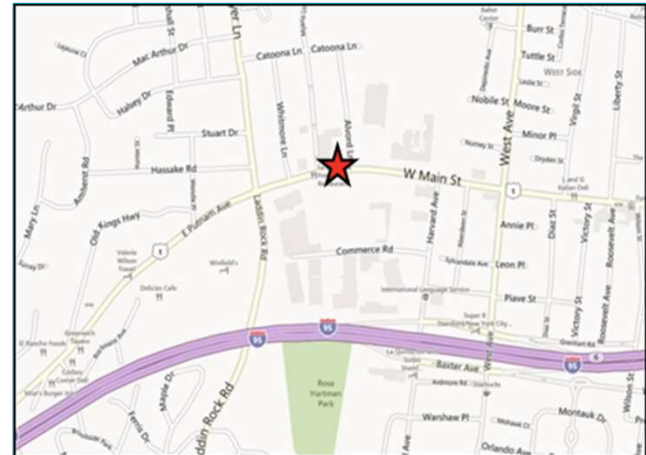




2001 W. MAIN STREET 2 <sup>ND</sup> FLOOR	SF AVAIL.	RENT
<b>Office &amp; Medical Space</b>	2,350 SF*	\$35.00/SF gross + electric (*Sublease through 8/31/2028)
<b>Office, Medical or Therapy Space</b>	1,385 SF	\$35.00/SF gross + electric
	890 SF	\$35.00/SF gross + electric
	420 SF	\$35.00/SF gross + electric
	265 SF	\$35.00/SF gross + electric
	250 SF	\$35.00/SF gross + electric
30 MYANO LANE 3 <sup>RD</sup> FLOOR	SF AVAIL.	RENT
<b>Office &amp; Medical Space</b>	1,100 SF	\$35.00/SF gross + electric



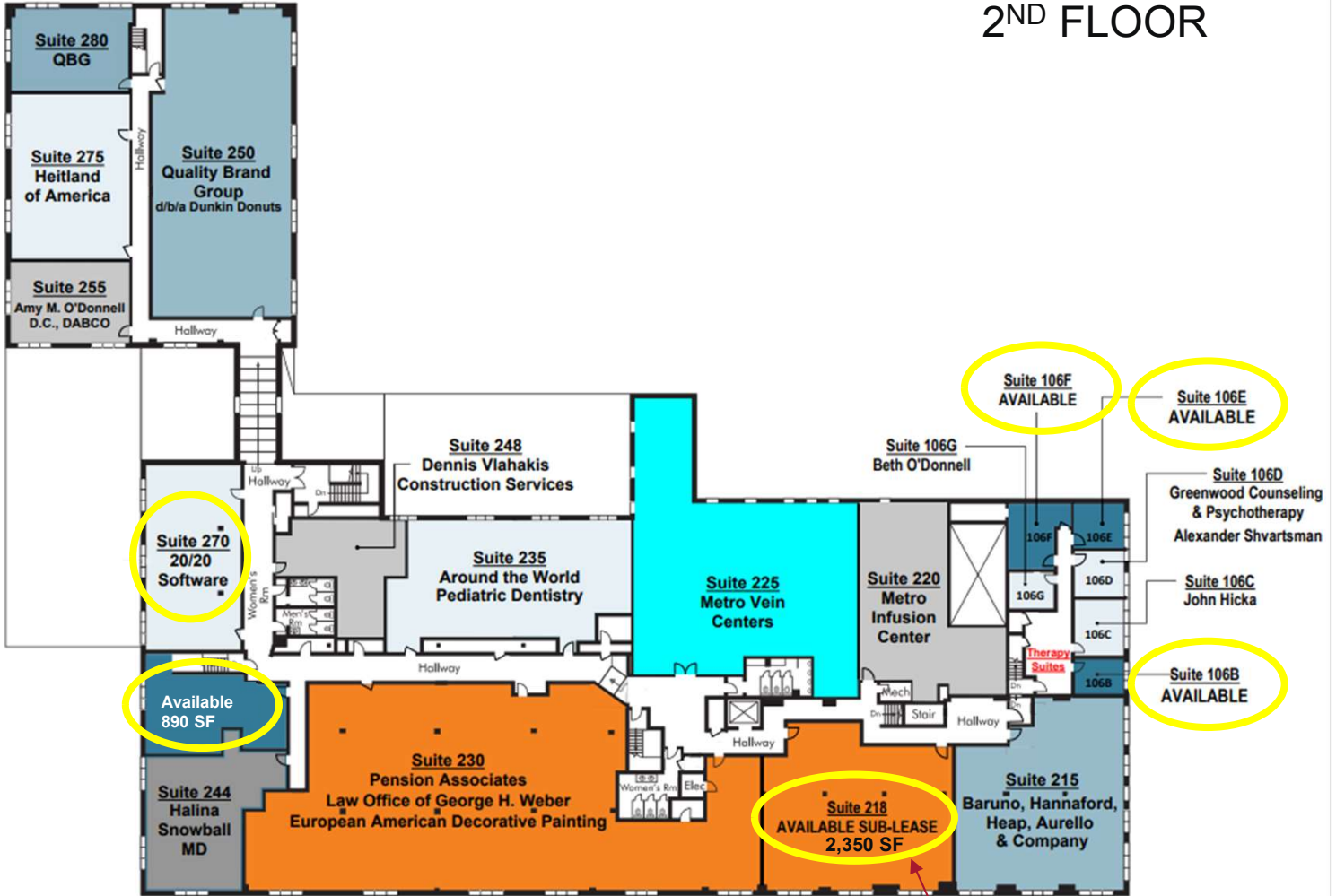
For more information, please contact:

**KATHLEEN FAZIO**  
203 326 5848  
kathleen.fazio@cushwake.com

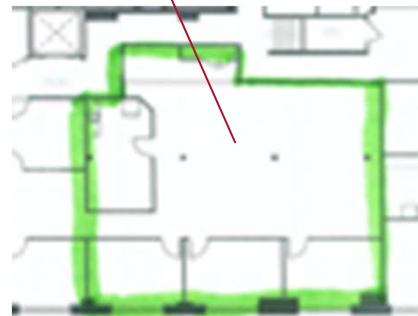
**JODIE DOSTAL**  
203 326 5805  
jodie.dostal@cushwake.com

**Cushman & Wakefield of Connecticut, Inc.**  
107 Elm Street, 8<sup>th</sup> floor  
Stamford, CT 06902  
203 326 5800  
[www.cushmanwakefield.com](http://www.cushmanwakefield.com)

**2<sup>ND</sup> FLOOR**



**Existing sublease  
 2,350 SF – Suite 218**



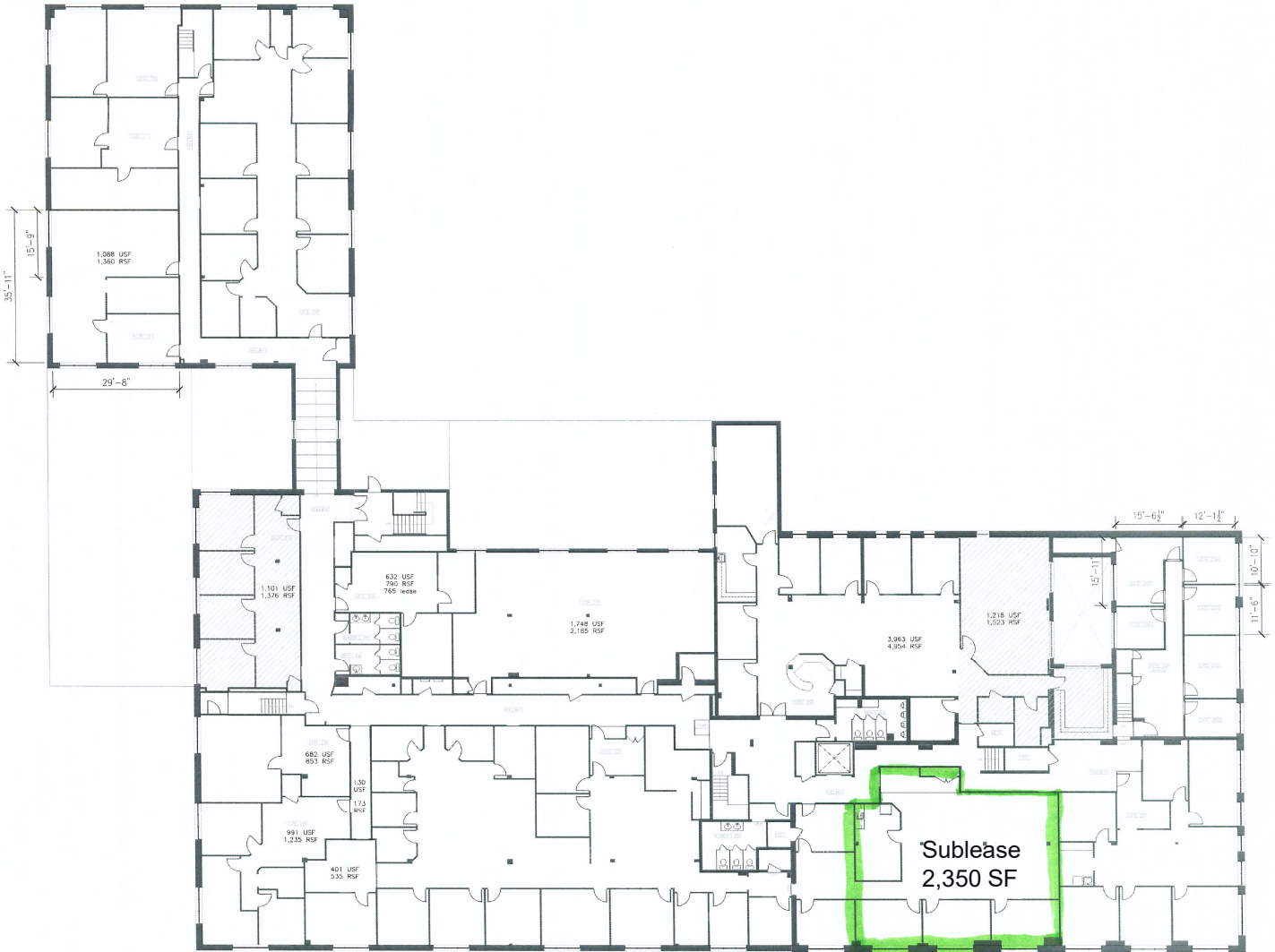
For more information, please contact:

**KATHLEEN FAZIO**  
 203 326 5848  
 kathleen.fazio@cushwake.com

**JODIE DOSTAL**  
 203 326 5805  
 jodie.dostal@cushwake.com

Cushman & Wakefield of Connecticut, Inc.  
 107 Elm Street, 8<sup>th</sup> floor  
 Stamford, CT 06902  
 203 326 5800  
 www.cushmanwakefield.com

**2<sup>ND</sup> FLOOR**



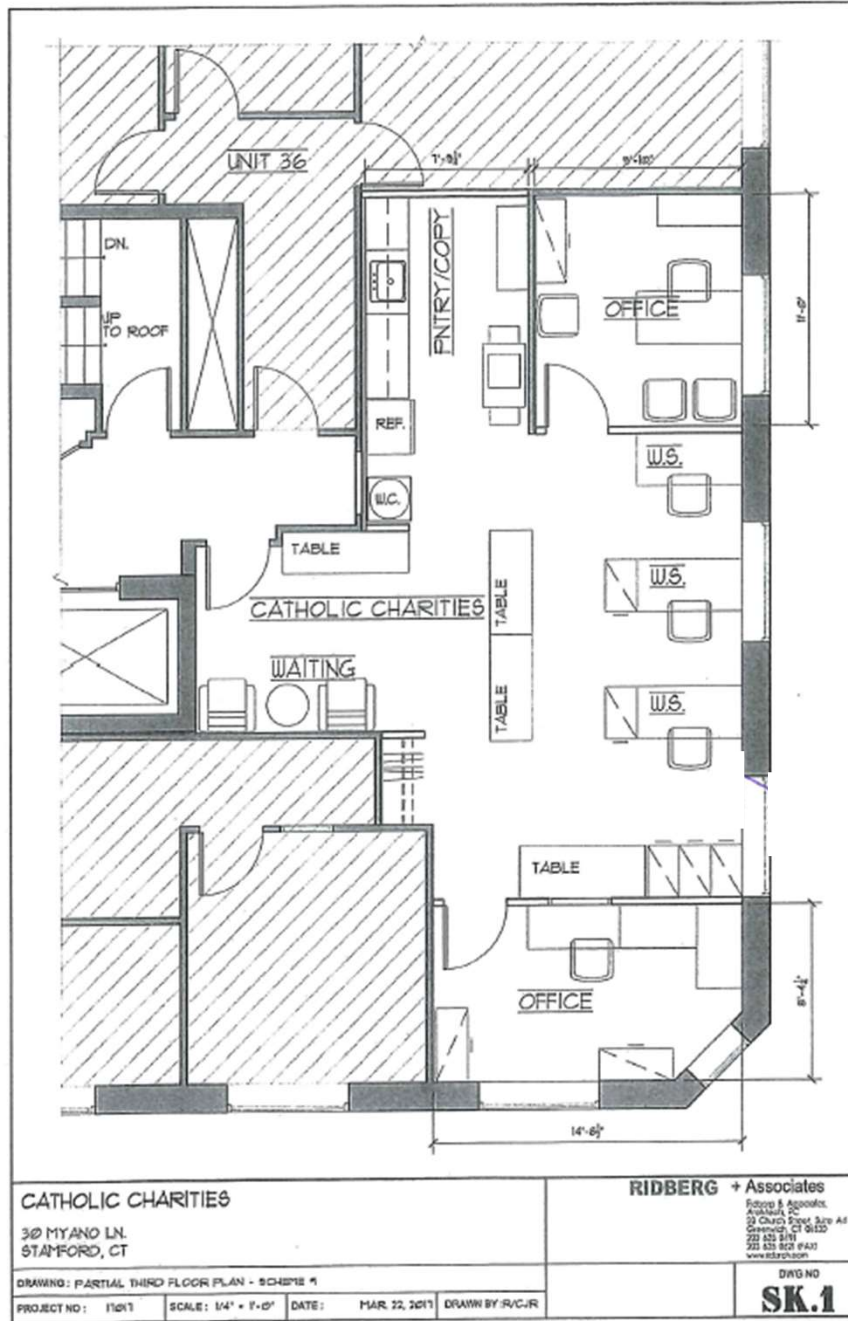
For more information, please contact:

**KATHLEEN FAZIO**  
203 326 5848  
kathleen.fazio@cushwake.com

**JODIE DOSTAL**  
203 326 5805  
jodie.dostal@cushwake.com

**Cushman & Wakefield of Connecticut, Inc.**  
107 Elm Street, 8<sup>th</sup> floor  
Stamford, CT 06902  
203 326 5800  
[www.cushmanwakefield.com](http://www.cushmanwakefield.com)

**3<sup>RD</sup> FLOOR**



For more information, please contact:

**KATHLEEN FAZIO**  
203 326 5848  
kathleen.fazio@cushwake.com

**JODIE DOSTAL**  
203 326 5805  
jodie.dostal@cushwake.com

**Cushman & Wakefield of Connecticut, Inc.**  
107 Elm Street, 8<sup>th</sup> floor  
Stamford, CT 06902  
203 326 5800  
[www.cushmanwakefield.com](http://www.cushmanwakefield.com)



## PROPERTY FEATURES

- Route 1 frontage
- Prominent signage
- Located on the Greenwich border

For more information, please contact:

**KATHLEEN FAZIO**  
203 326 5848  
kathleen.fazio@cushwake.com

**JODIE DOSTAL**  
203 326 5805  
jodie.dostal@cushwake.com

**Cushman & Wakefield of Connecticut, Inc.**  
107 Elm Street, 8<sup>th</sup> floor  
Stamford, CT 06902  
203 326 5800  
[www.cushmanwakefield.com](http://www.cushmanwakefield.com)