



FOR SALE OR LEASE

LITTLE ROCK WAREHOUSE SPACE

Property Highlights

- Sale Price: \$750,000 (\$20.08/SF)
- Lease Rate: Negotiable
- 37,346 ±SF warehouse
- 3.46 ±AC
- Fenced yard with concrete pad
- 12 dock high doors
- 1 roll-up
- Cold storage infrastructure

*information deemed reliable but not guaranteed

For more information, please contact:

Ryan Gibson
501 680 6119
rgibson@sagepartners.com

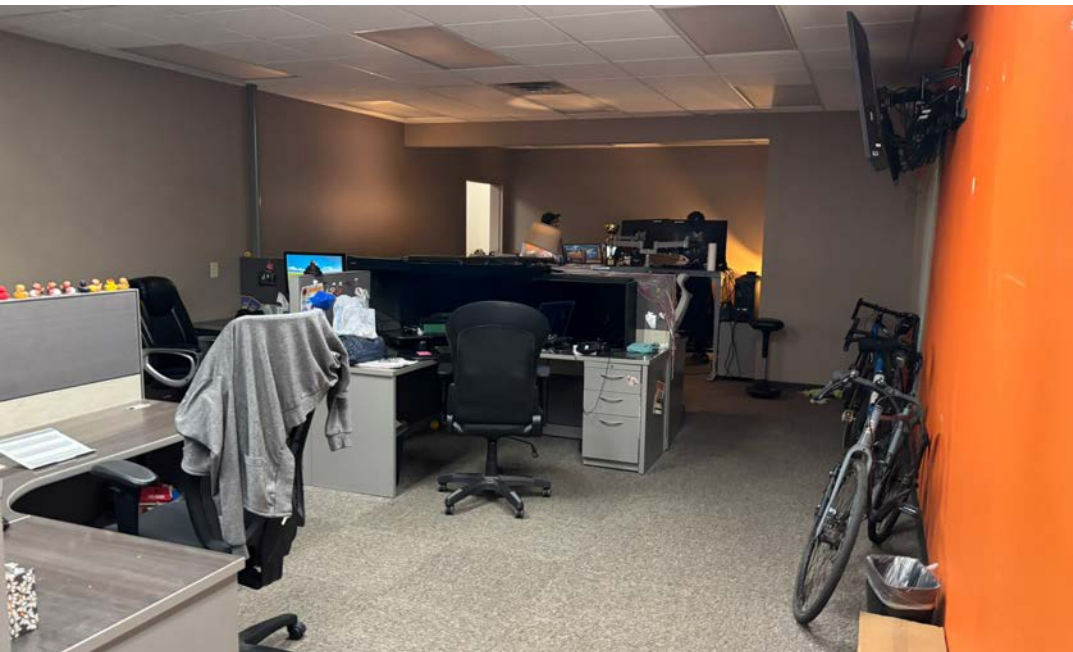
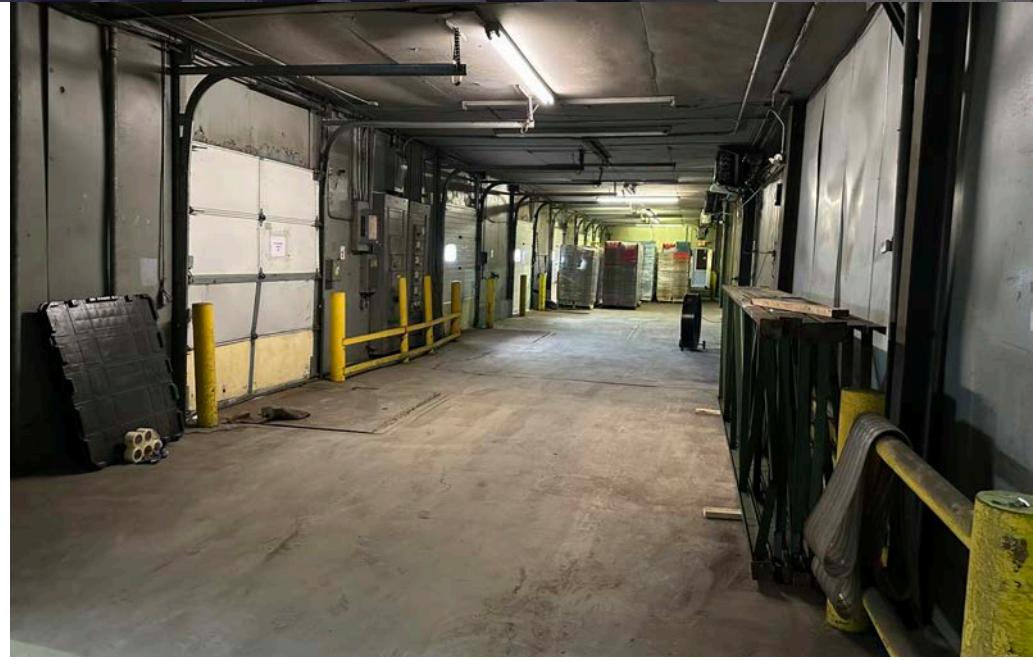
Cole Baldwin
501 410 2476
cbaldwin@sagepartners.com

501 716 5511
sagepartners.com

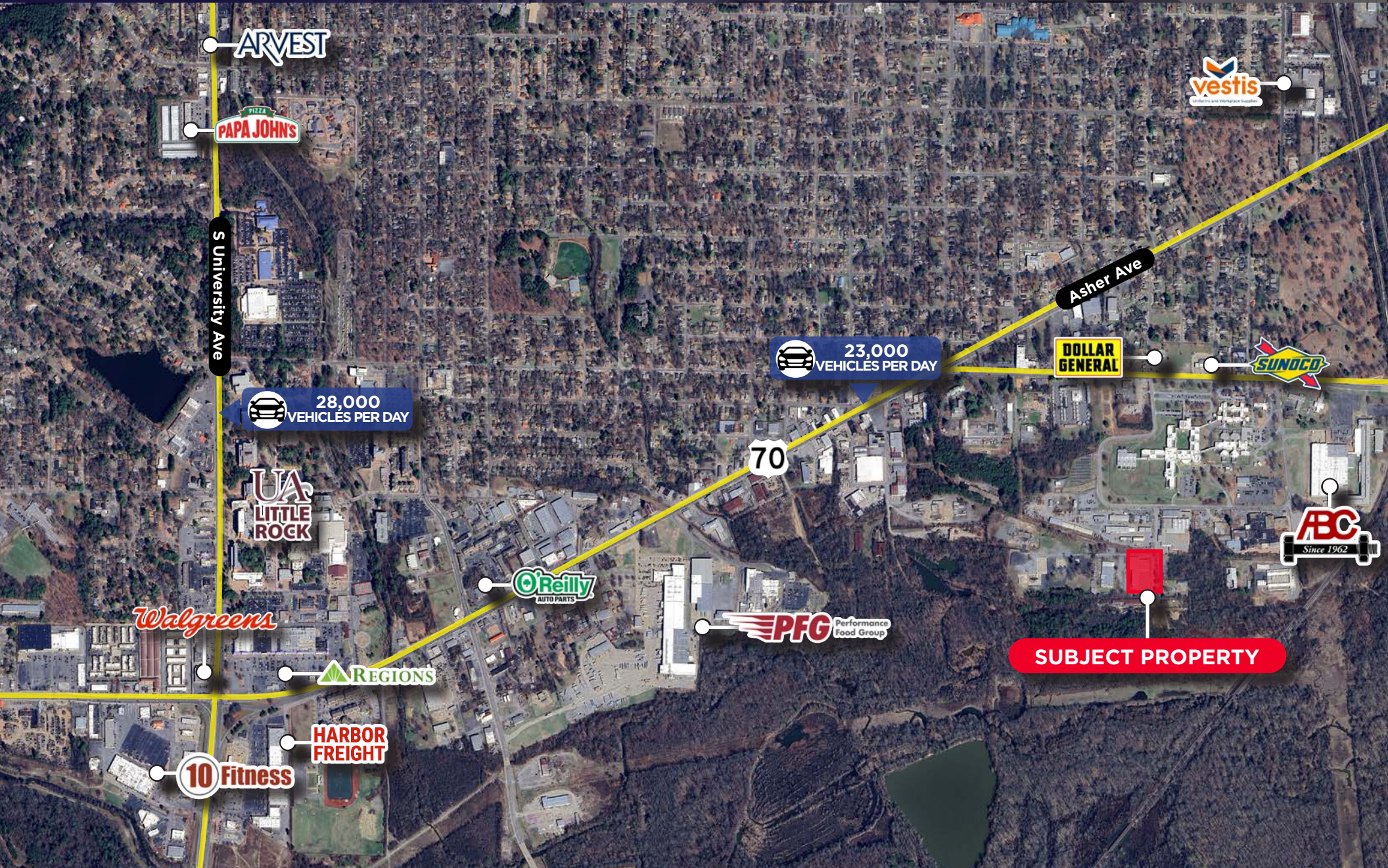
EXTERIOR PHOTOS 3300 BROWN ST | LITTLE ROCK, AR 72204



INTERIOR PHOTOS 3300 BROWN ST | LITTLE ROCK, AR 72204



AERIAL 3300 BROWN ST | LITTLE ROCK, AR 72204



ARVEST

PAPA JOHN'S

vestis

S University Ave

Asher Ave

28,000
VEHICLES PER DAY

23,000
VEHICLES PER DAY

DOLLAR
GENERAL

SUNOCO

70

UA
LITTLE
ROCK

ABC
Since 1962

O'Reilly
AUTO PARTS

PFG
Performance
Food Group

SUBJECT PROPERTY

Walgreens

REGIONS

HARBOR
FREIGHT

10 Fitness