

# Bellomy Center | Retail Space For Lease

1975-1995 Bellomy St., Santa Clara, CA



Last Retail Space  
1,388± SF

**RYAN WARNER**  
Lic. #01397580  
rwarner@moinc.net  
408.477.2505



# PROPERTY HIGHLIGHTS

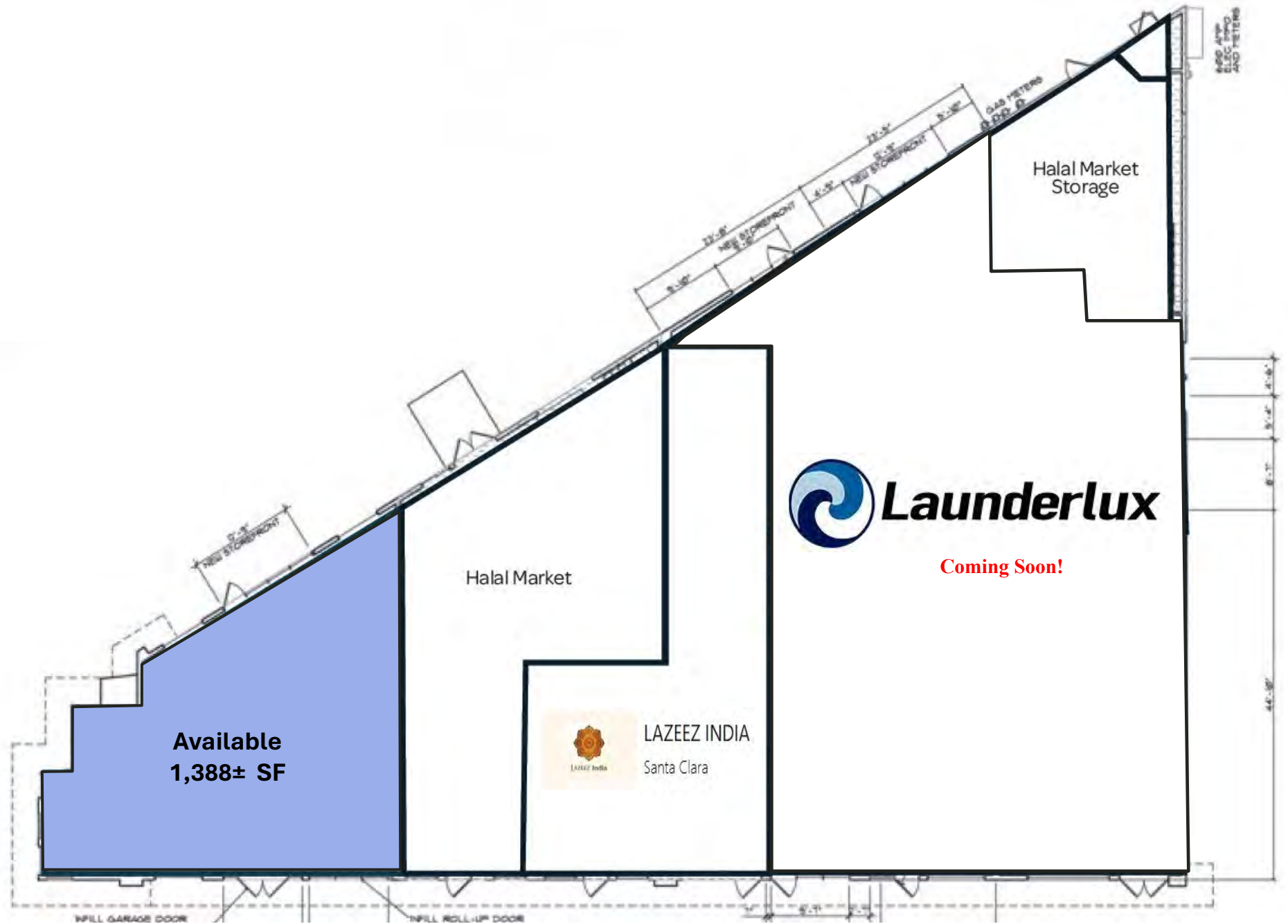


\*PROPOSED REMODEL-SUBJECT TO MODIFICATION

- Newly Remodeled Retail Building
- Close Proximity to Santa Clara University
- High Population Density
- Outdoor Patio Possible

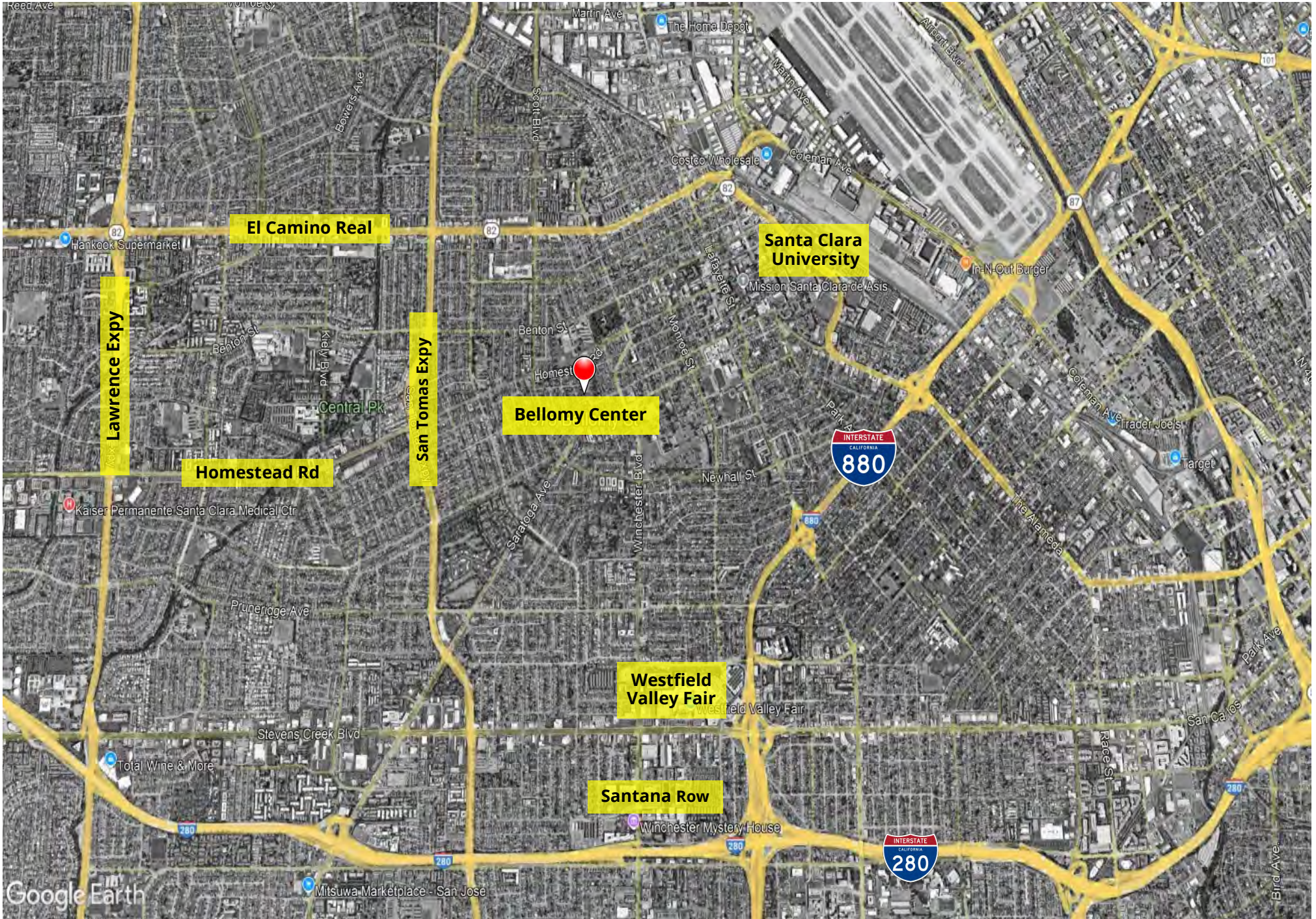
- Launderlux Coming Soon!
- 1,388± SF Endcap
- Asking \$3.00 PSF, NNN
- TI Allowance Available

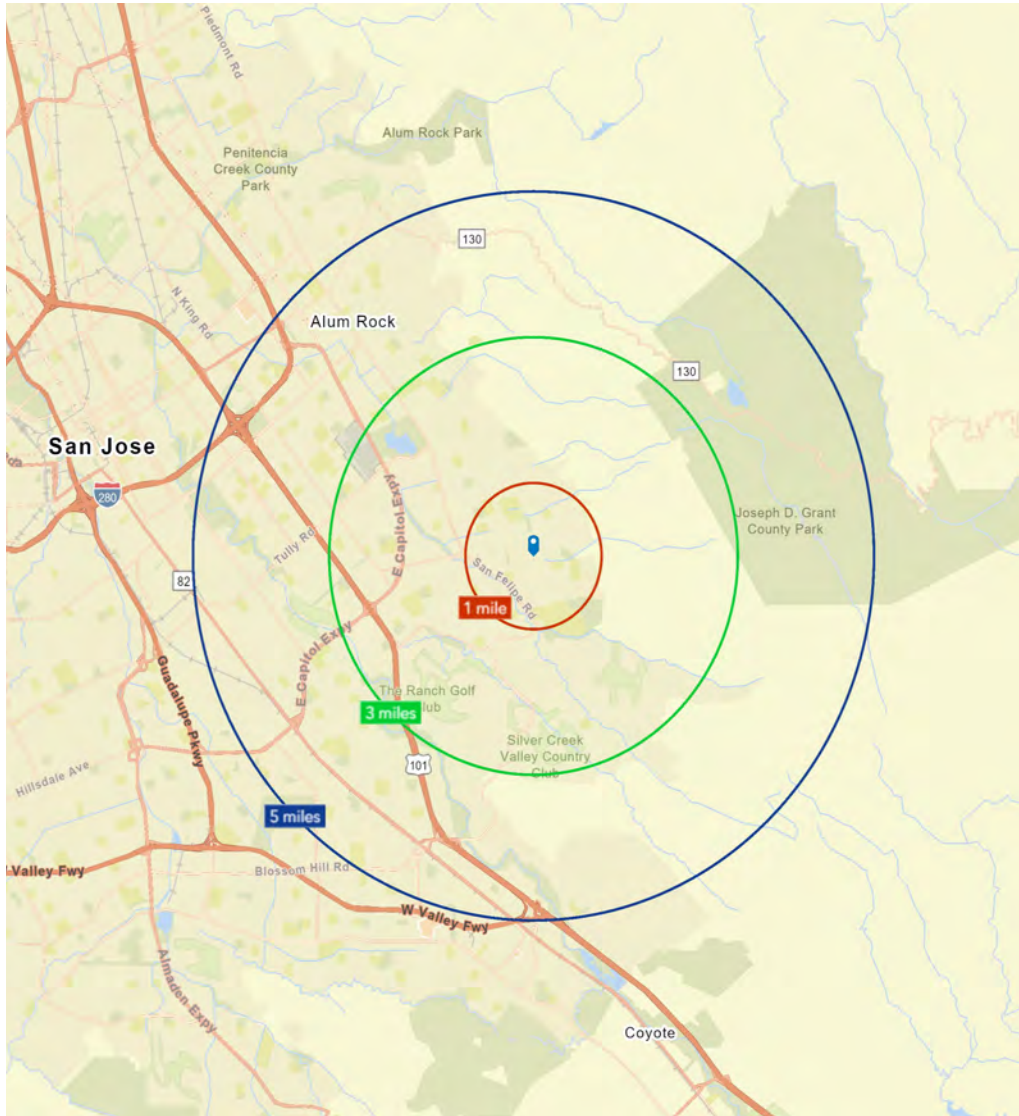
# FLOOR PLAN



# PHOTOS







## AREA DEMOGRAPHICS

2026	1 MILE	3 MILES	5 MILES
POPULATION:	29,204	232,272	649,504
AVG. HH INCOME:	\$199,764	\$206,585	\$218,951
BUSINESSES:	919	11,712	32,811
EMPLOYEES:	7,725	140,817	421,211



Meacham/Oppenheimer, Inc.  
 8 N. San Pedro St., Suite 300  
 San Jose, California 95110  
 Tel: 408.378.5900  
 www.moinc.net

**RYAN WARNER**

Lic. #01397580  
 rwarner@moinc.net  
 408.477.2505